

# ASSEMBLY INSTRUCTIONS FOR



*less work, more game*



# CAVERNA®

QUICK >> START INSERT™

CAVERNA® is a registered trademark of Lookout Games and Mayfair Games. Any mention of CAVERNA® is for reference purposes only. ALL RIGHTS RESERVED by their respective trademark holders. No challenge to any intellectual property rights is intended or implied by representations of compatibility and no endorsements of any of our products by any other company is implied or represented.



# QUICK»START INSERT™ FOR CAVERNA®

## General Assembly Instructions

### The following are basic instructions for any of the Quick Start Inserts:

- All panels are labeled with an Alphabet letter (A, B, C, etc.). First sort all panels into piles by their letters before you begin to assemble.
- Layout the parts in the diagrams provided, to ensure you have all the parts
- Glue only the edges that come into contact with the wood (remove excess immediately)
- Allow 24 hours to dry before using

### Tips & Tricks

- Some of the parts might need to be slightly sanded on the edges for a perfect fit.
- Sometimes tapping the pieces with a small amount of force (with a mallet) helps create a tighter fit.
- Taping the outside corners of the boxes helps it hold in place while the glue is drying.
- If you break a part, don't hesitate calling we always carry spares – you just need to cover shipping. (most spares can be send in an envelope, if so we don't charge for shipping)

### Assembly Supplies



Beacon 527 or wood-glue  
(we recommend supper-glue)



Painters blue tape  
(painter's tape helps protect the finish)



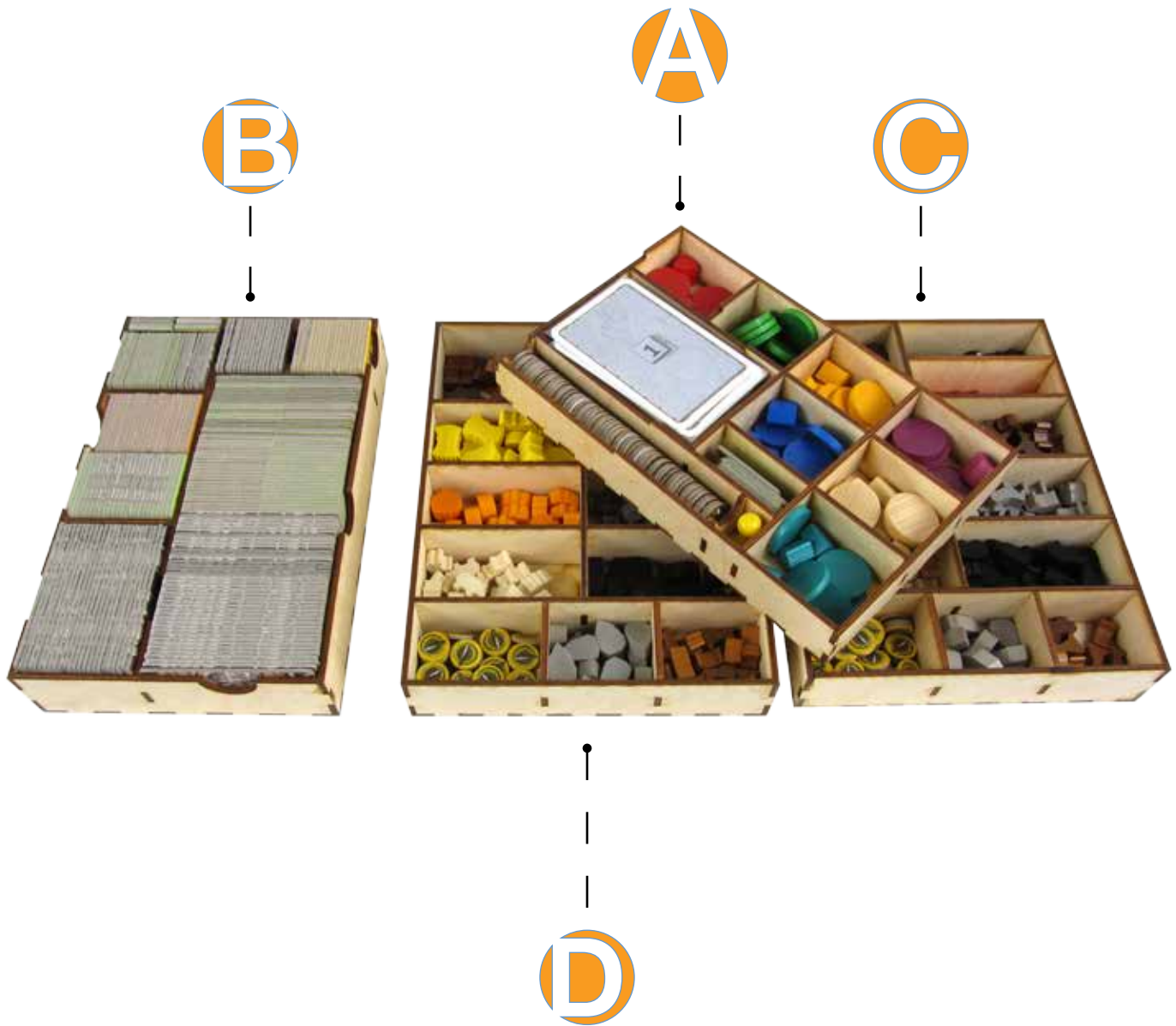
Rubber mallet  
(or something to tap the pieces together)



Cotton swap/ Q-tip  
(or something to wipe the excess glue)



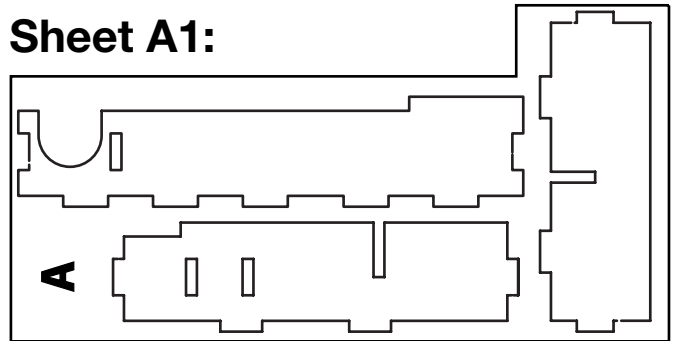
# QUICK START INSERT™ FOR CAVERNA®



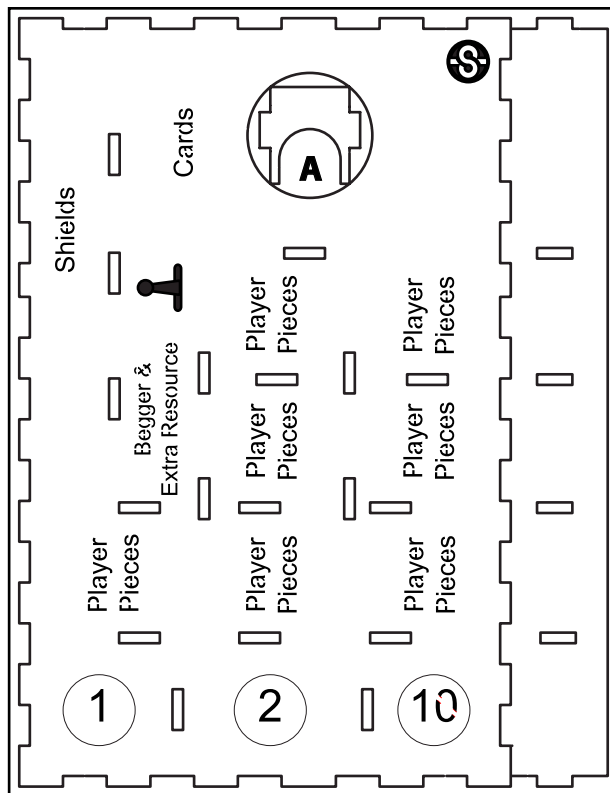
This Quick Start Insert is compatible with CAVERNA and its expansions. This is a non-licensed product. ALL RIGHTS RESERVED by their respective trademark holders. No challenge to any intellectual property rights is intended or implied by representations of compatibility and no endorsements of any of our products by any other company is implied or represented.



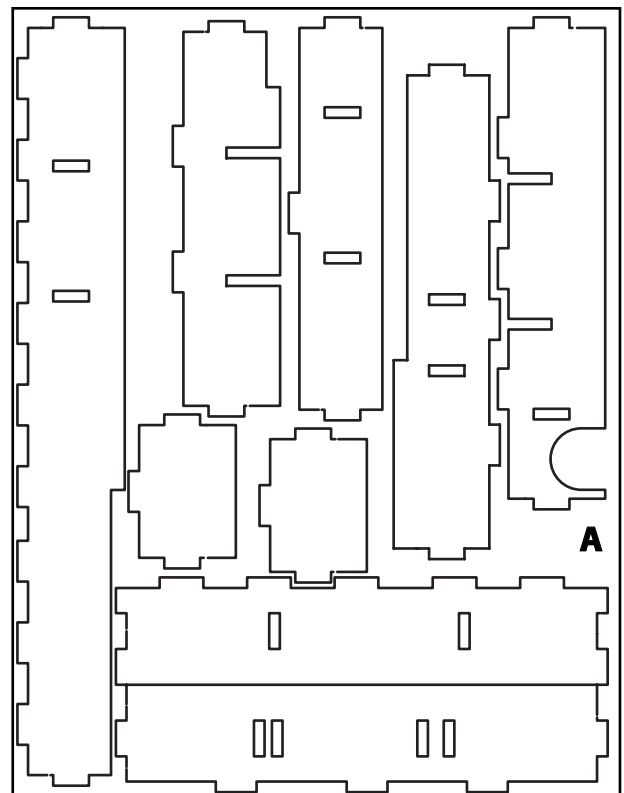
**Sheet A1:**



**Sheet A2:**



**Sheet A3:**

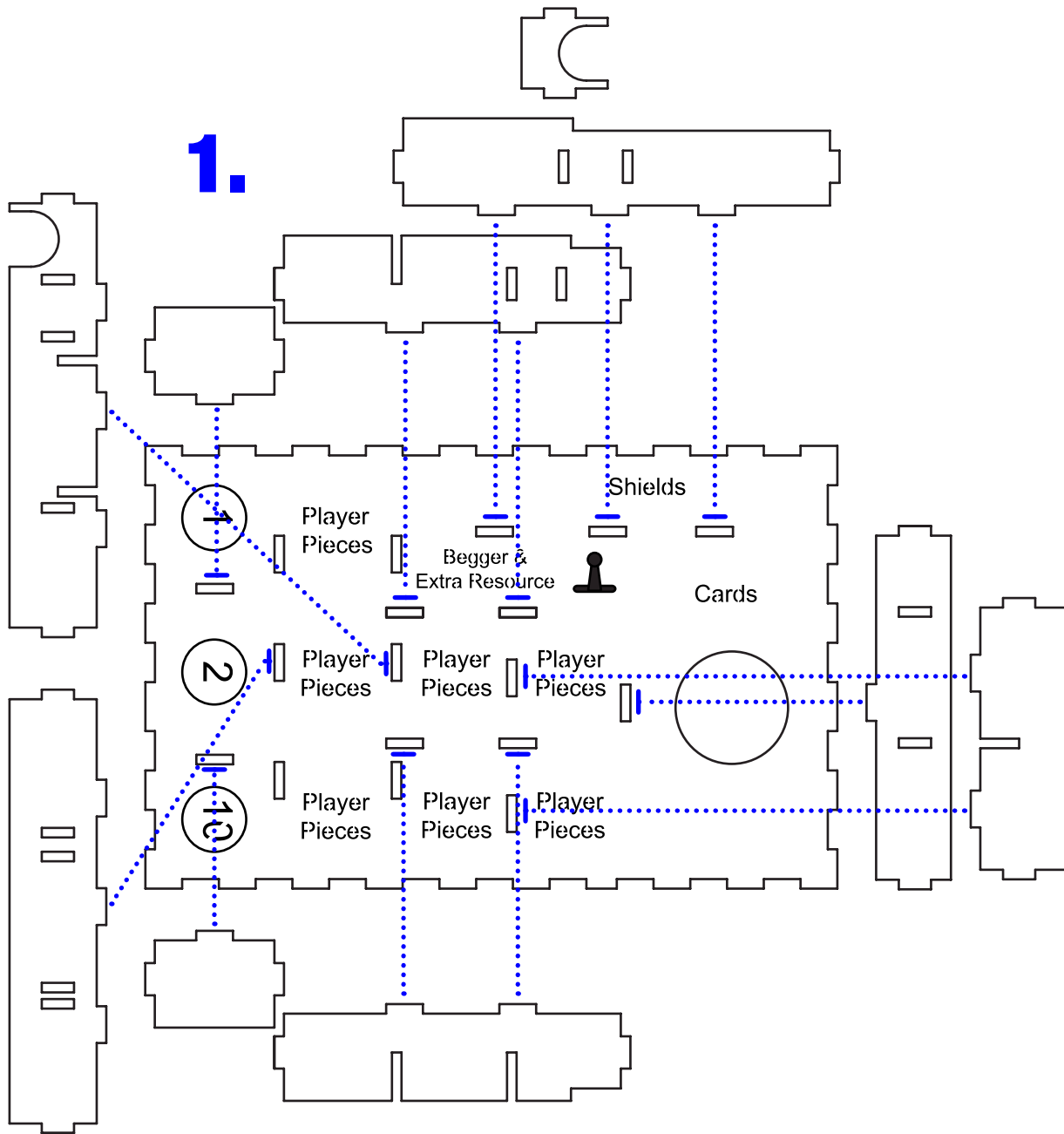


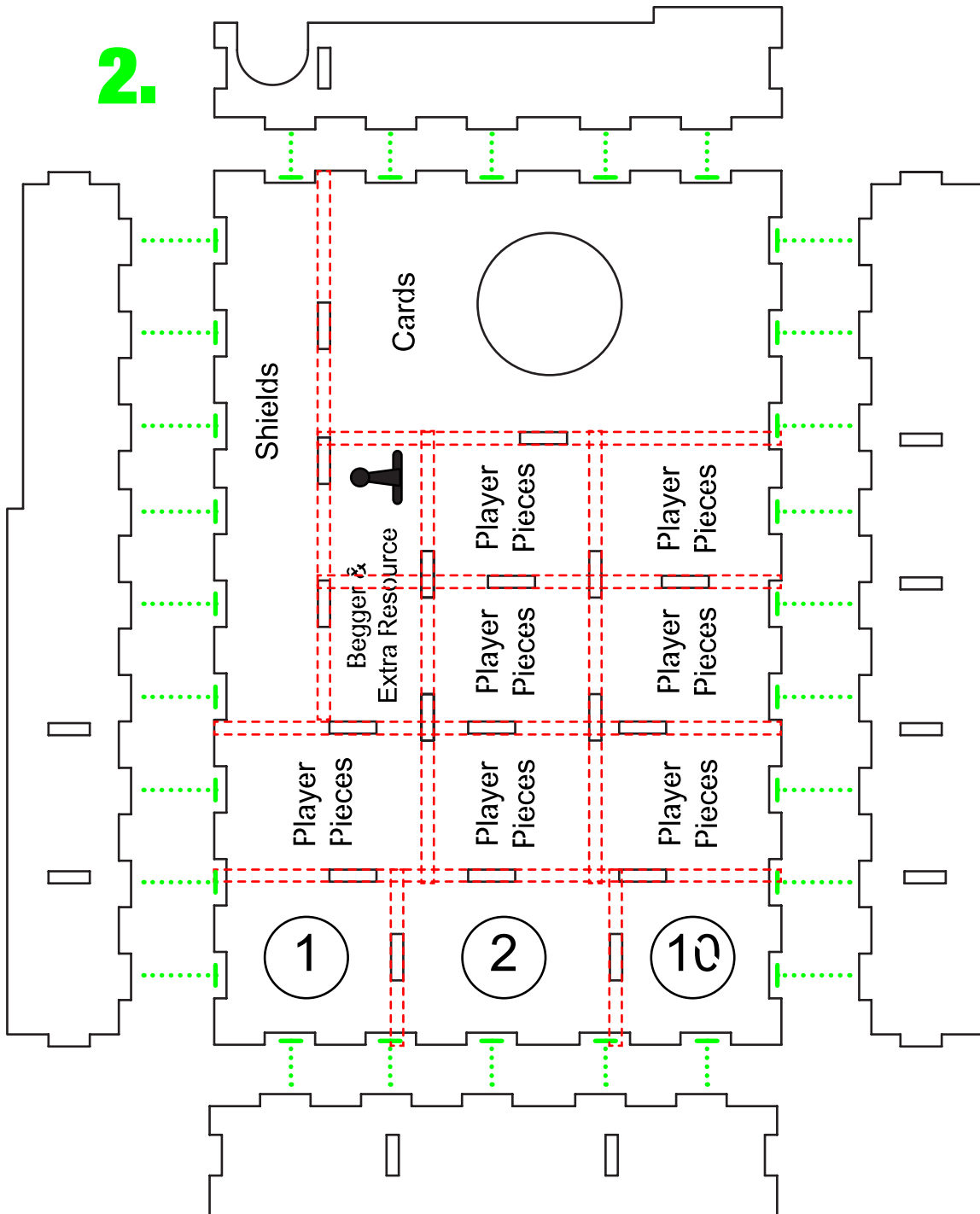


### Recommended Assembly Sequence

*NOTE: Glue is option for internal pieces*

1. Assemble all internal pieces prior to inserting any into base plate
2. Insert all internal pieces into base plate







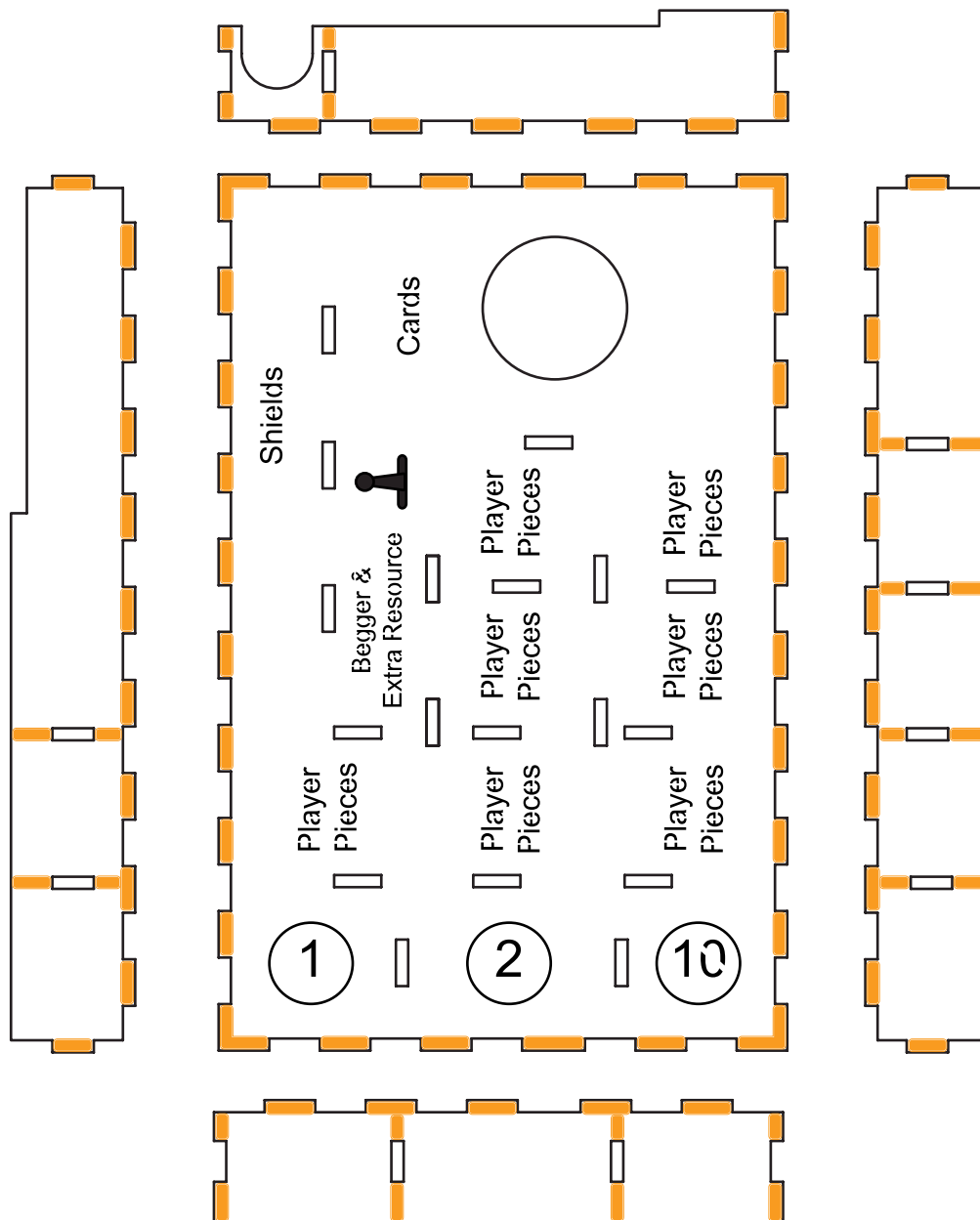
QUICK **»»** START INSERT™ FOR  
CAVERNA®



## Glue Tips:

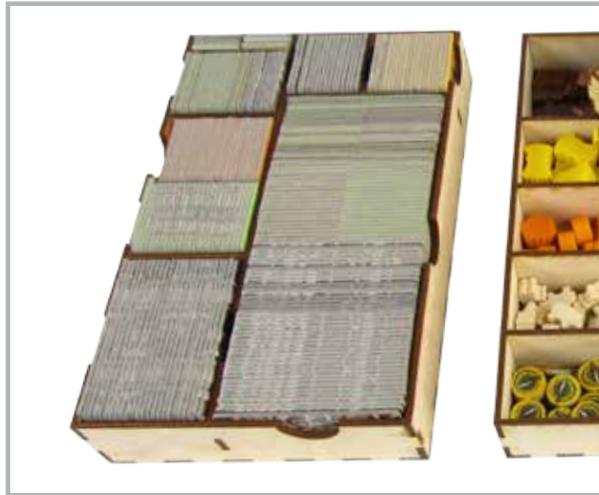
1. Glue, place pieces together, wipe of excess glue, THEN tape firmly (Quickly)
2. Glue each exterior joint where two pieces come together
3. Don't glue tabs that slide into other pieces of wood (it just scrapes off)

## Glue Locations:

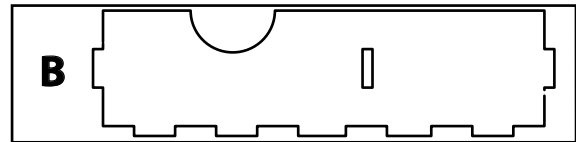




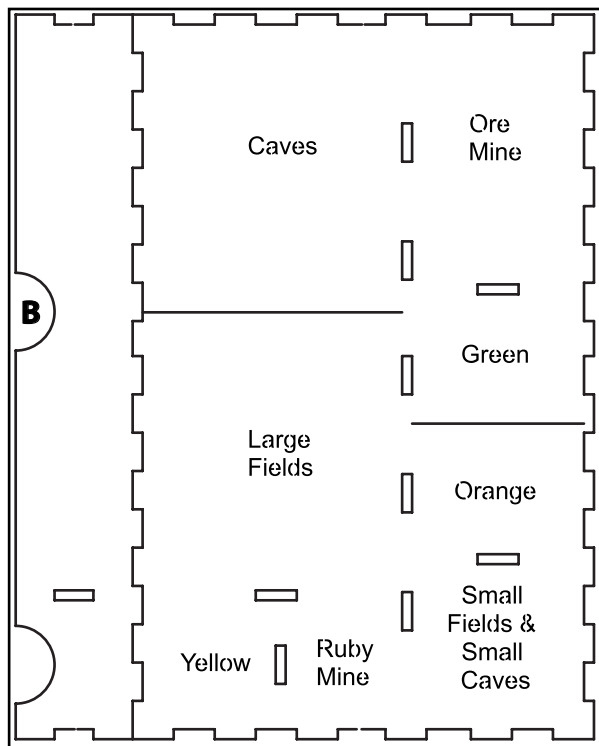
**QUICK START INSERT™ FOR CAVERNA®**



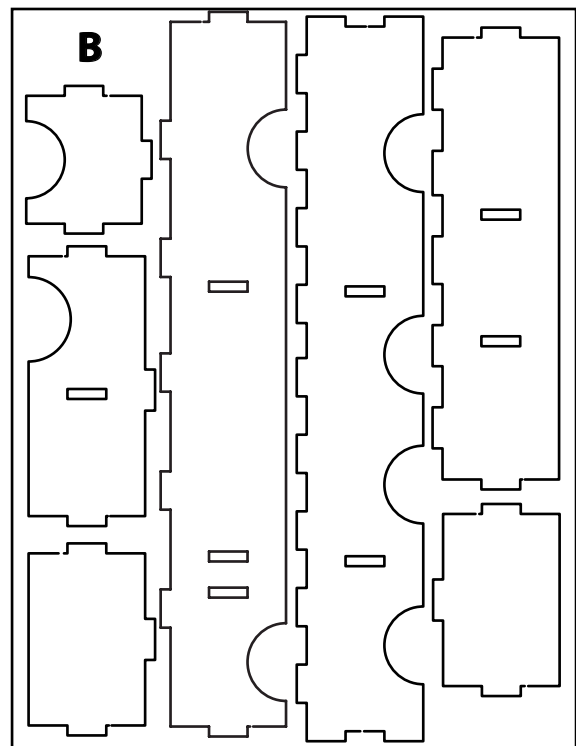
**Sheet B1:**



**Sheet B2:**



**Sheet B3:**

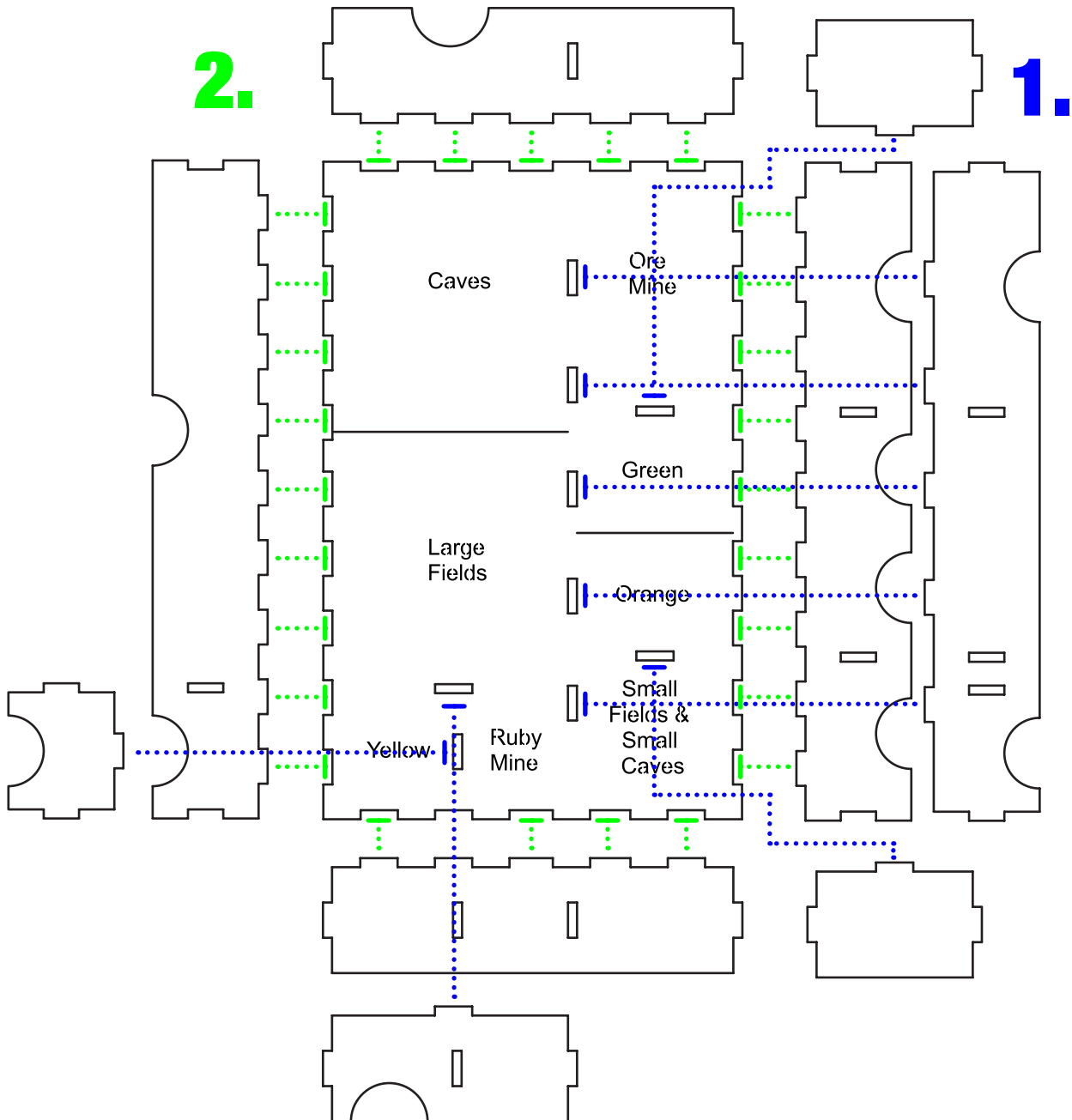






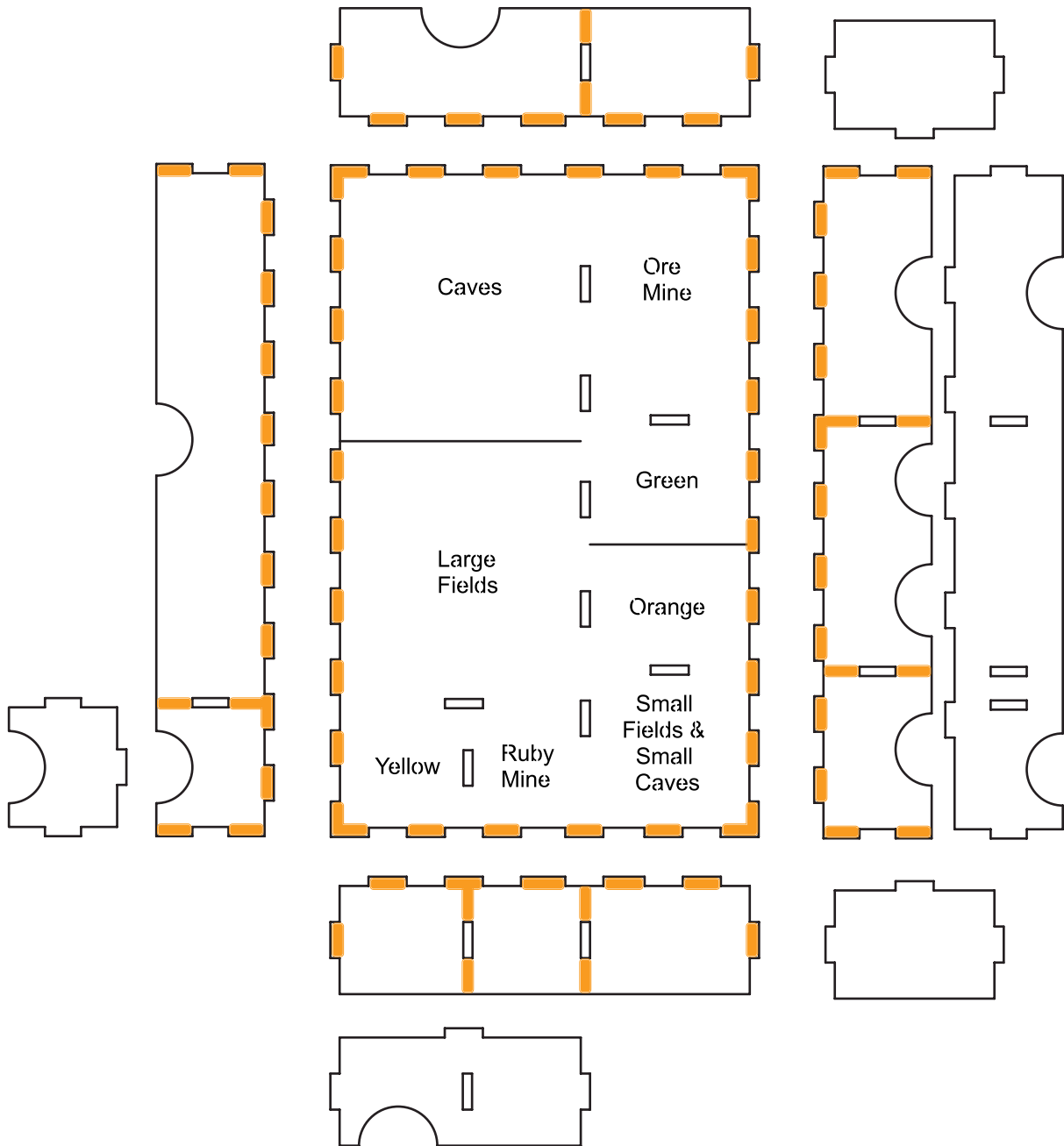
### Recommended Assembly Sequence

1. Build and glue center structure first
2. Glue center structure to base plate
2. Glue all side pieces





## Glue Locations:

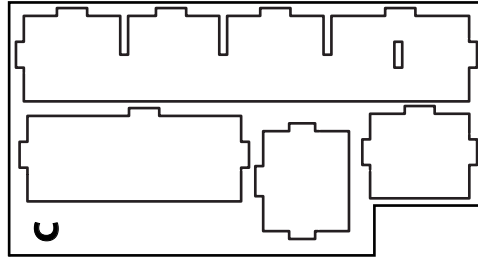




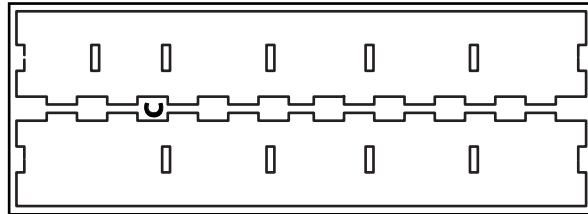
**QUICK START INSERT™ FOR CAVERNA®**



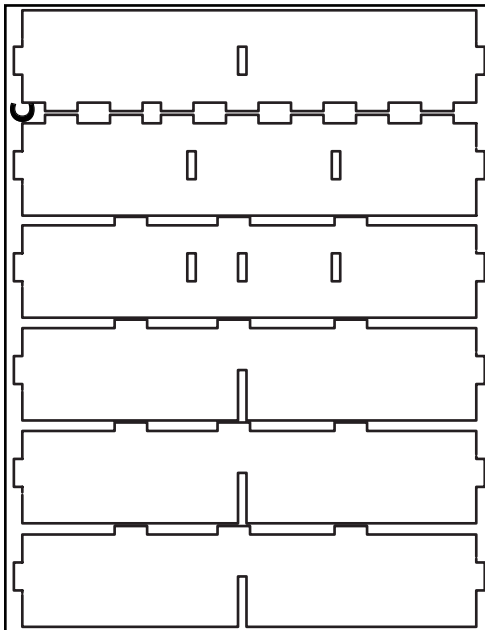
**Sheet C1:**



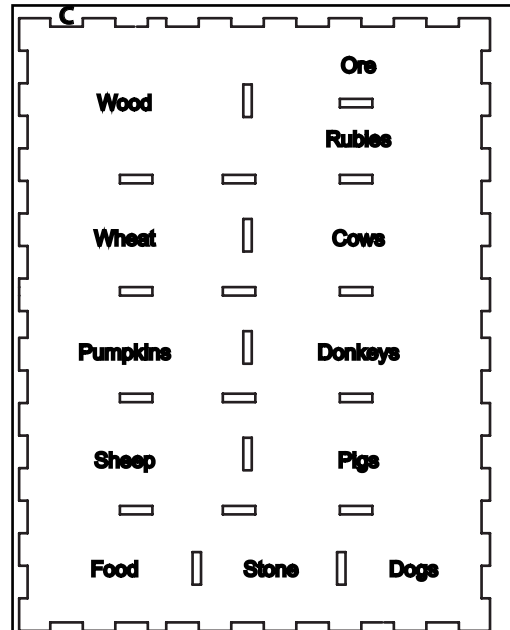
**Sheet C2:**



**Sheet C3:**



**Sheet C4:**

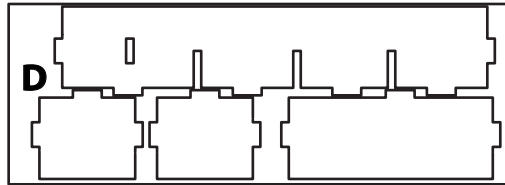




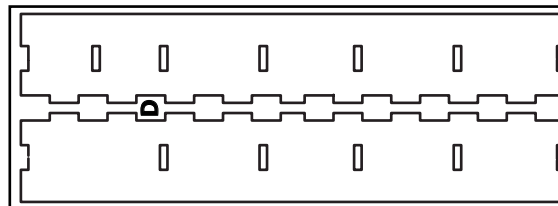
**QUICK START INSERT™ FOR CAVERNA®**



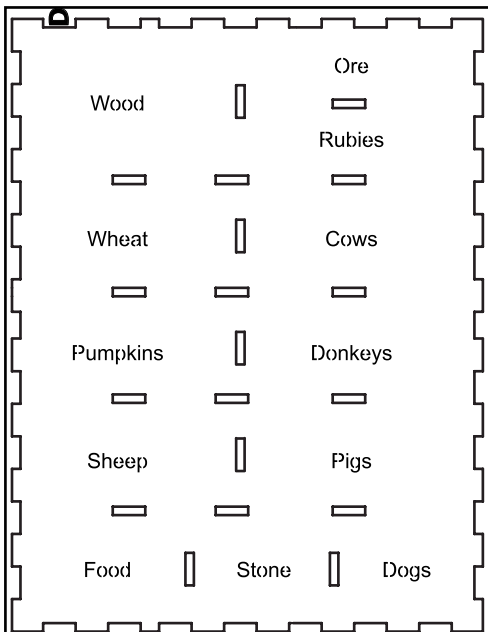
**Sheet D1:**



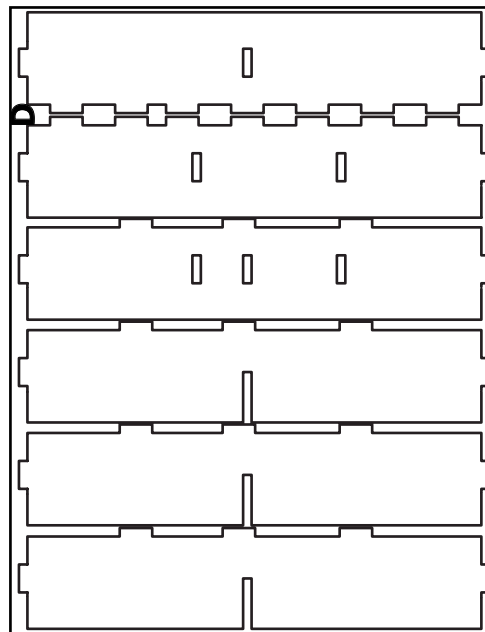
**Sheet D2:**



**Sheet D3:**



**Sheet D4:**

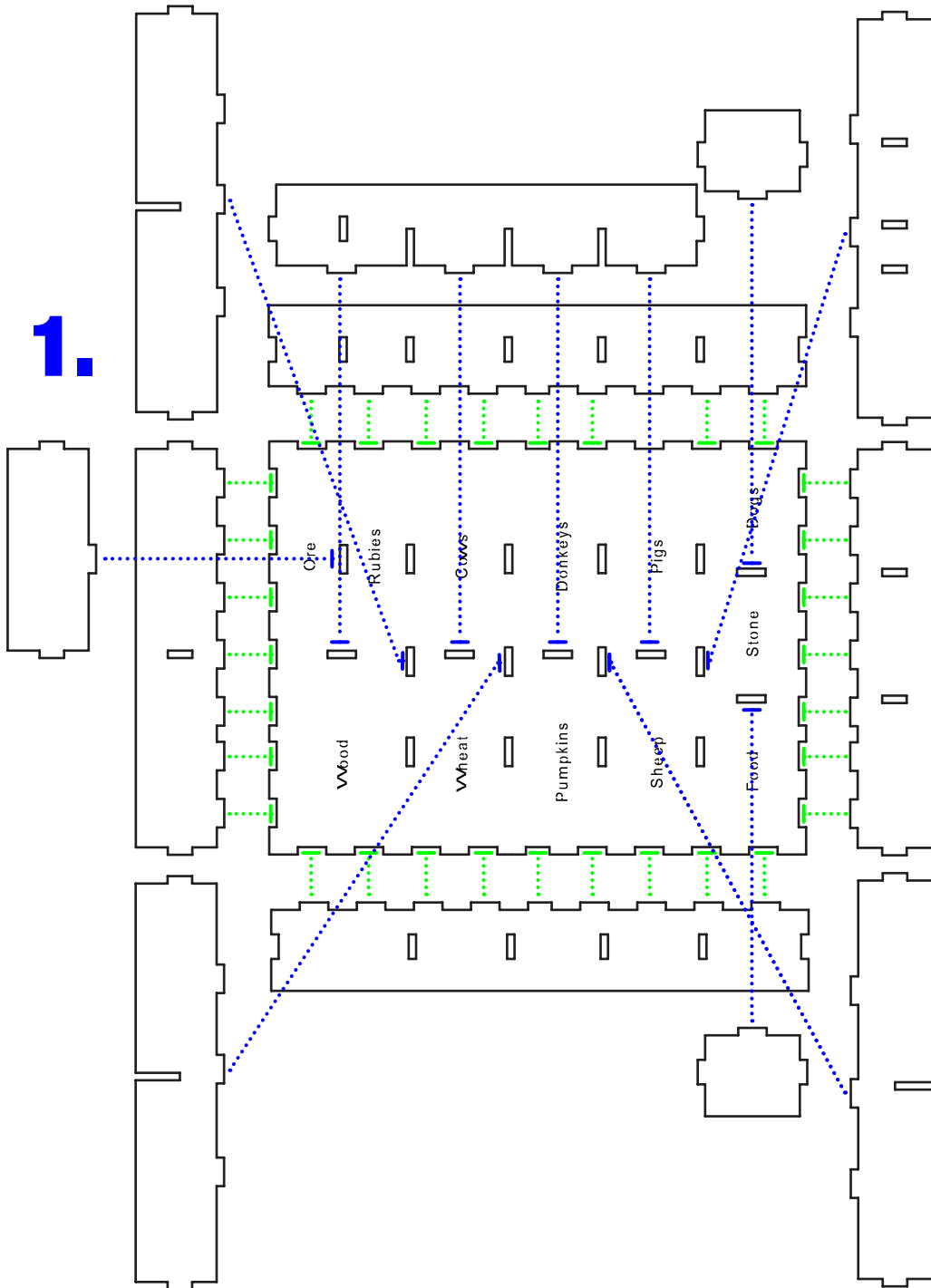




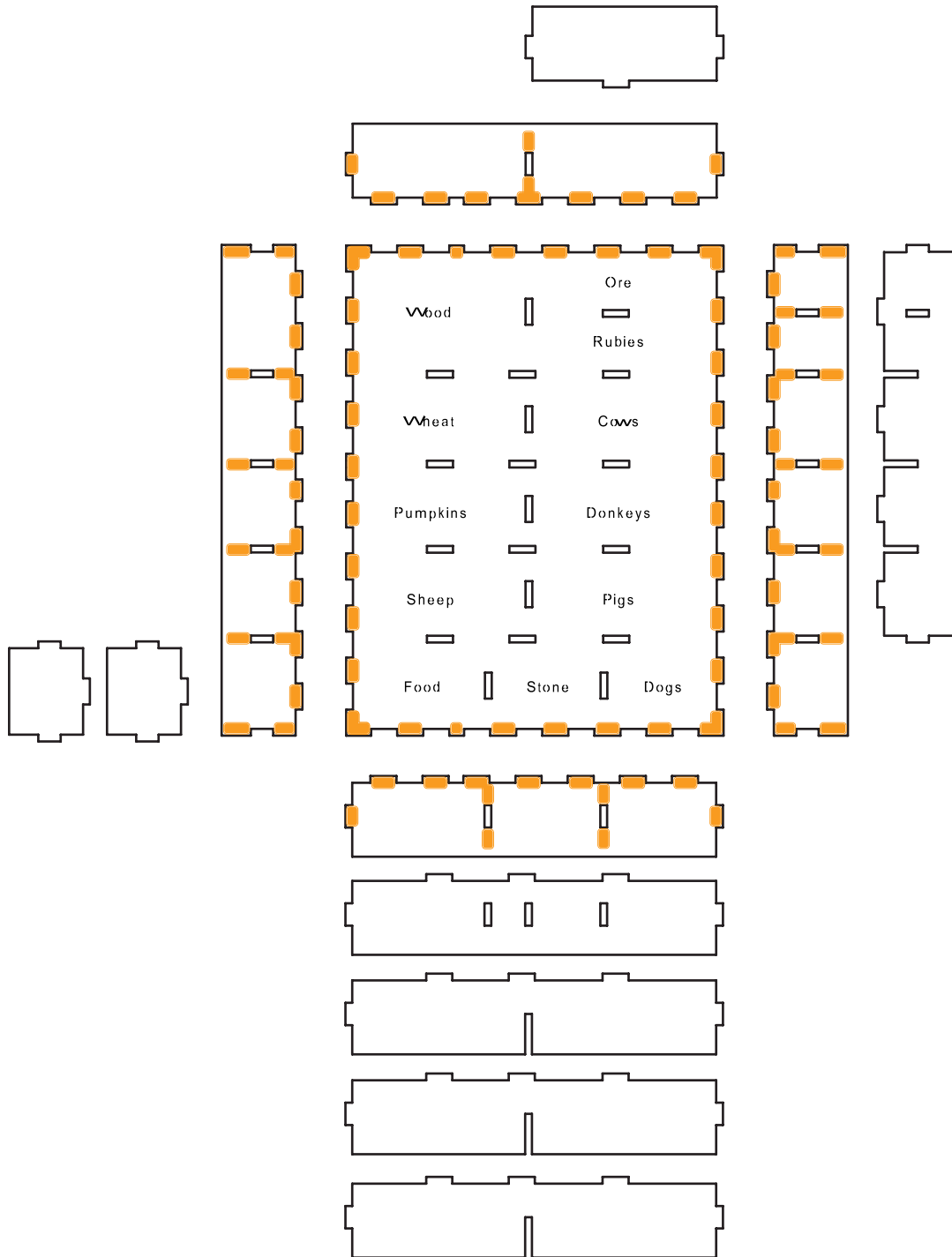
**QUICK START INSERT™ FOR CAVERNA®**

### Recommended Assembly Sequence

1. Build and glue center structure first
2. Glue center structure to base plate
2. Glue all side pieces



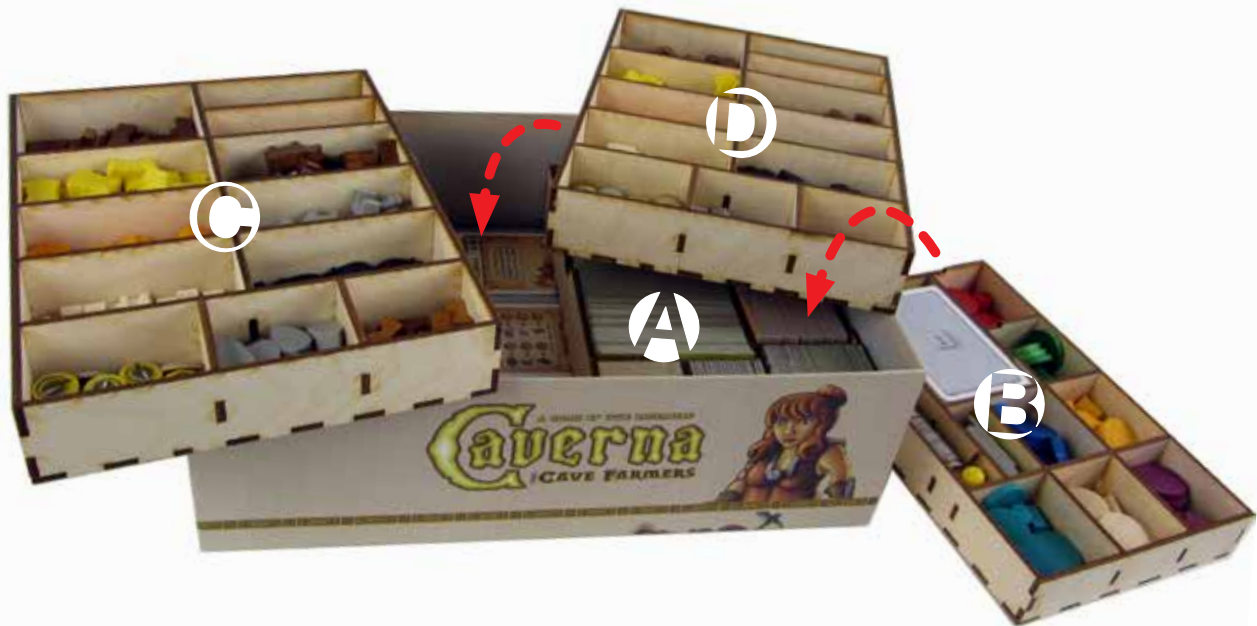
## Glue Locations:





# QUICK START INSERT™ FOR CAVERNA®

## Layout in Box



## Side View:

