

ASSEMBLY INSTRUCTIONS FOR



less work, more game



SPLENDOR[®]

QUICK  **START INSERT[™]**

Splendor[®] is a registered trademark of Asmodée Games. Any mention of Splendor[®] is for reference purposes only. ALL RIGHTS RESERVED by their respective trademark holders. No challenge to any intellectual property rights is intended or implied by representations of compatibility and no endorsements of any of our products by any other company is implied or represented.



QUICK START INSERT™ FOR SPLENDOR®

General Assembly Instructions

The following are basic instructions for any of the Quick Start Inserts:

- All parts are labeled with an Alphabet letter (A, B, C, etc.). First sort all pieces into piles by their letters before you begin to assemble.
- Layout the parts in the diagrams provided, to ensure you have all the parts
- Glue only the edges that come into contact with the wood (remove excess immediately)
- Allow 24 hours to dry before using

Tips & Tricks

- Some of the parts might need to be slightly sanded on the edges for a perfect fit.
- Sometimes tapping the pieces with a small amount of force (with a mallet) helps create a tighter fit.
- Taping the outside corners of the boxes helps it hold in place while the glue is drying.
- If you break a part, don't hesitate calling we always carry spares – you just need to cover shipping. (most spares can be send in an envelope, if so we don't charge for shipping)

Assembly Supplies



Beacon 527 or wood-glue
(we recommend supper-glue)



Painters blue tape
(painter's tape helps protect the finish)



Rubber mallet
(or something to tap the pieces together)



Cotton swap/ Q-tip
(or something to wipe the excess glue)



QUICK START INSERT™ FOR SPLENDOR®



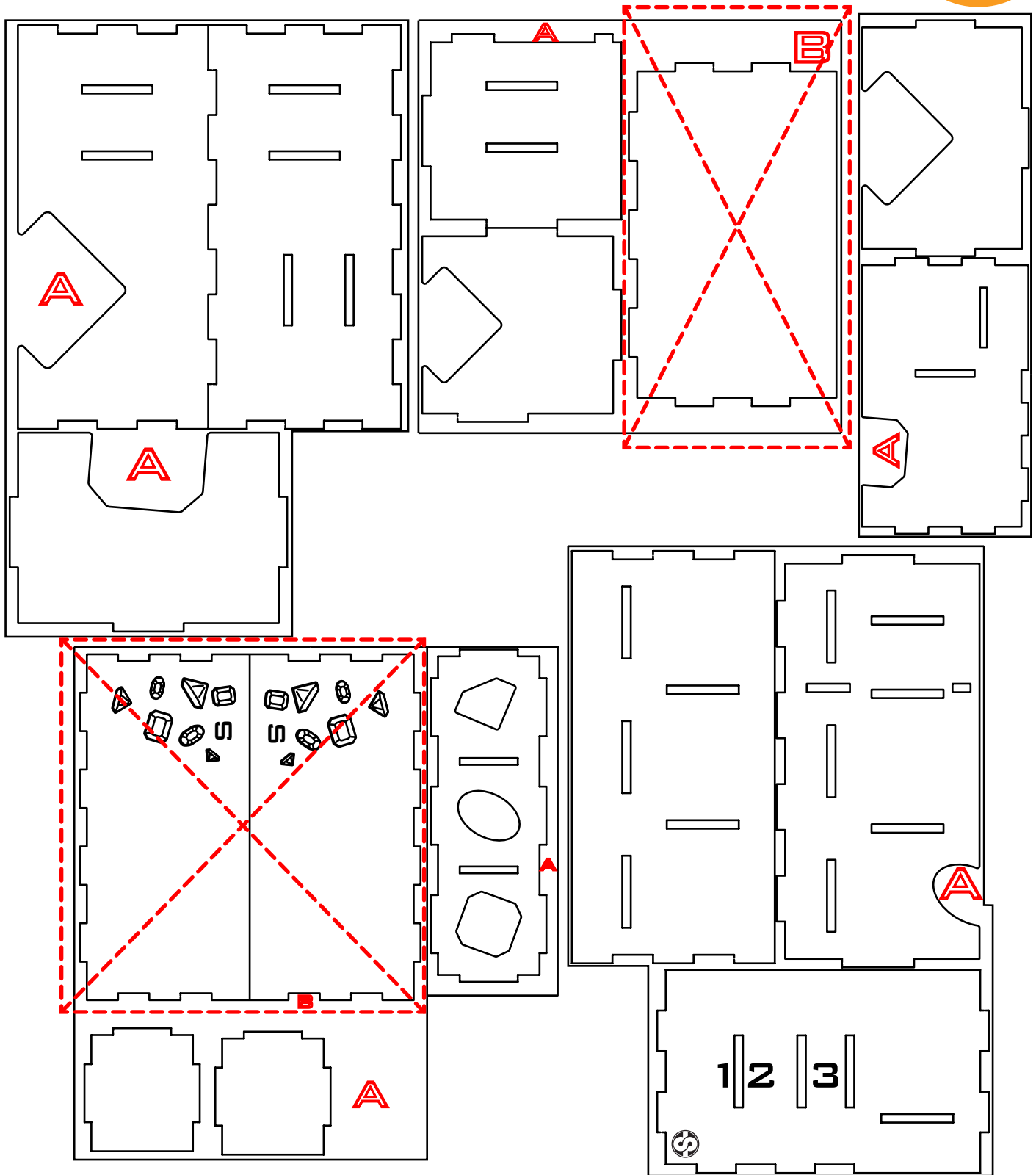
Section A:



This Daedalus Case is compatible with Splendor®. This is a non-licensed product. ALL RIGHTS RESERVED by their respective trademark holders. No challenge to any intellectual property rights is intended or implied by representations of compatibility and no endorsements of any of our products by any other company is implied or represented.



QUICKSTART INSERT™ FOR SPLENDOR®

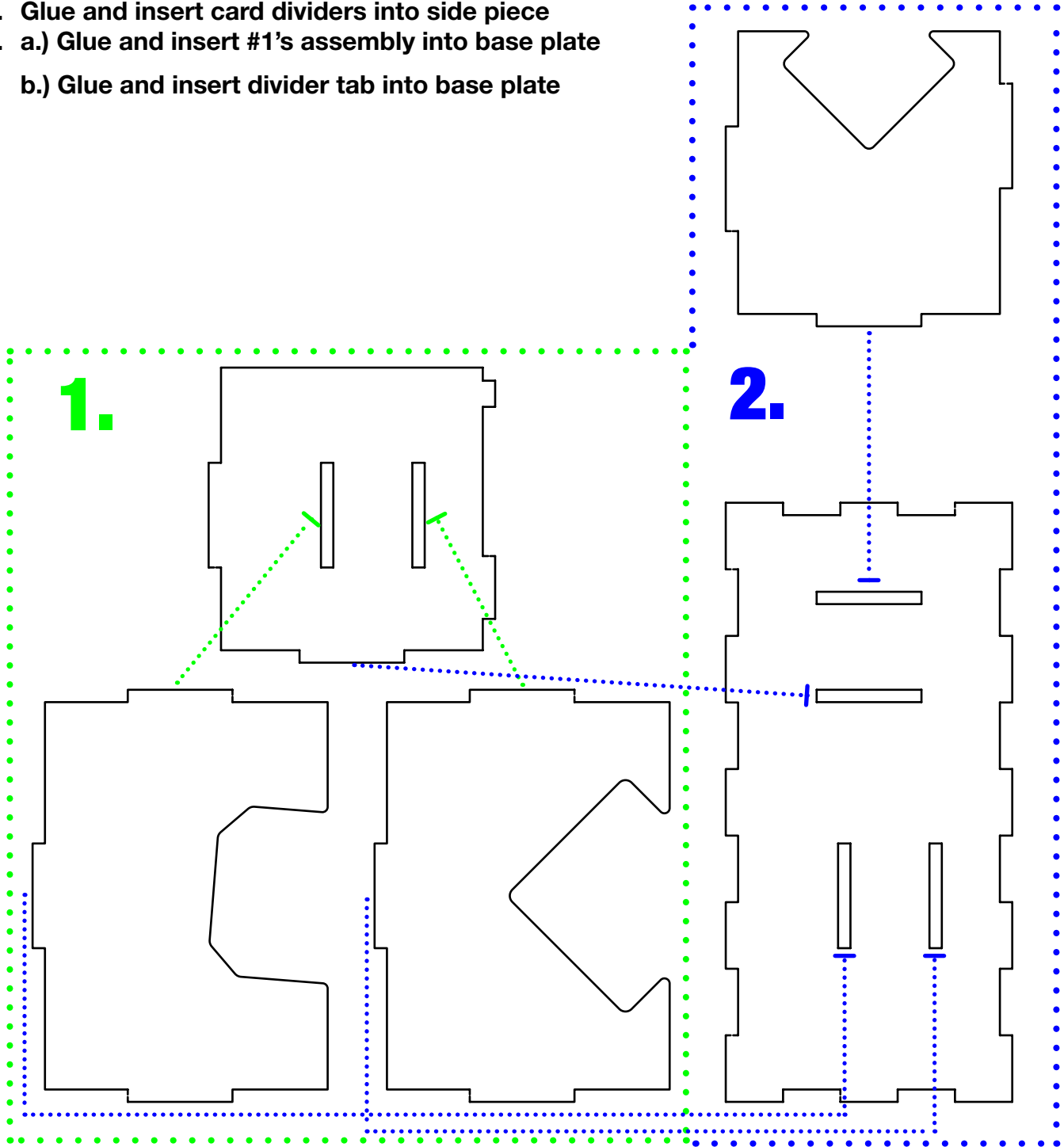


This Daedalus Case is compatible with Splendor®. This is a non-licensed product. ALL RIGHTS RESERVED by their respective trademark holders. No challenge to any intellectual property rights is intended or implied by representations of compatibility and no endorsements of any of our products by any other company is implied or represented.



Assembly Step One:

1. Glue and insert card dividers into side piece
2. a.) Glue and insert #1's assembly into base plate
b.) Glue and insert divider tab into base plate



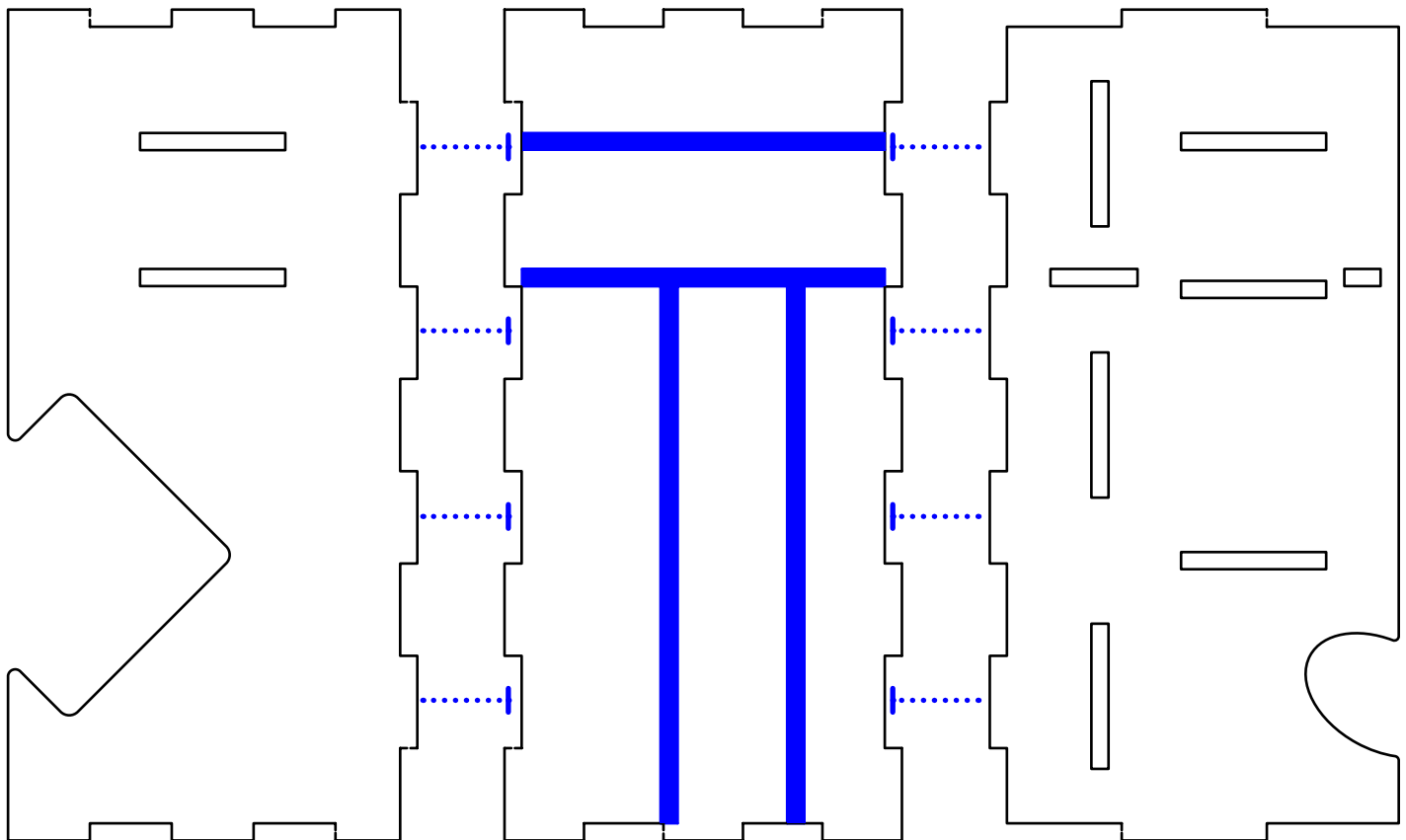


Assembly Step Two:

1. Glue and attach Side panels

*Blue sections denote previously assembled sections

1.

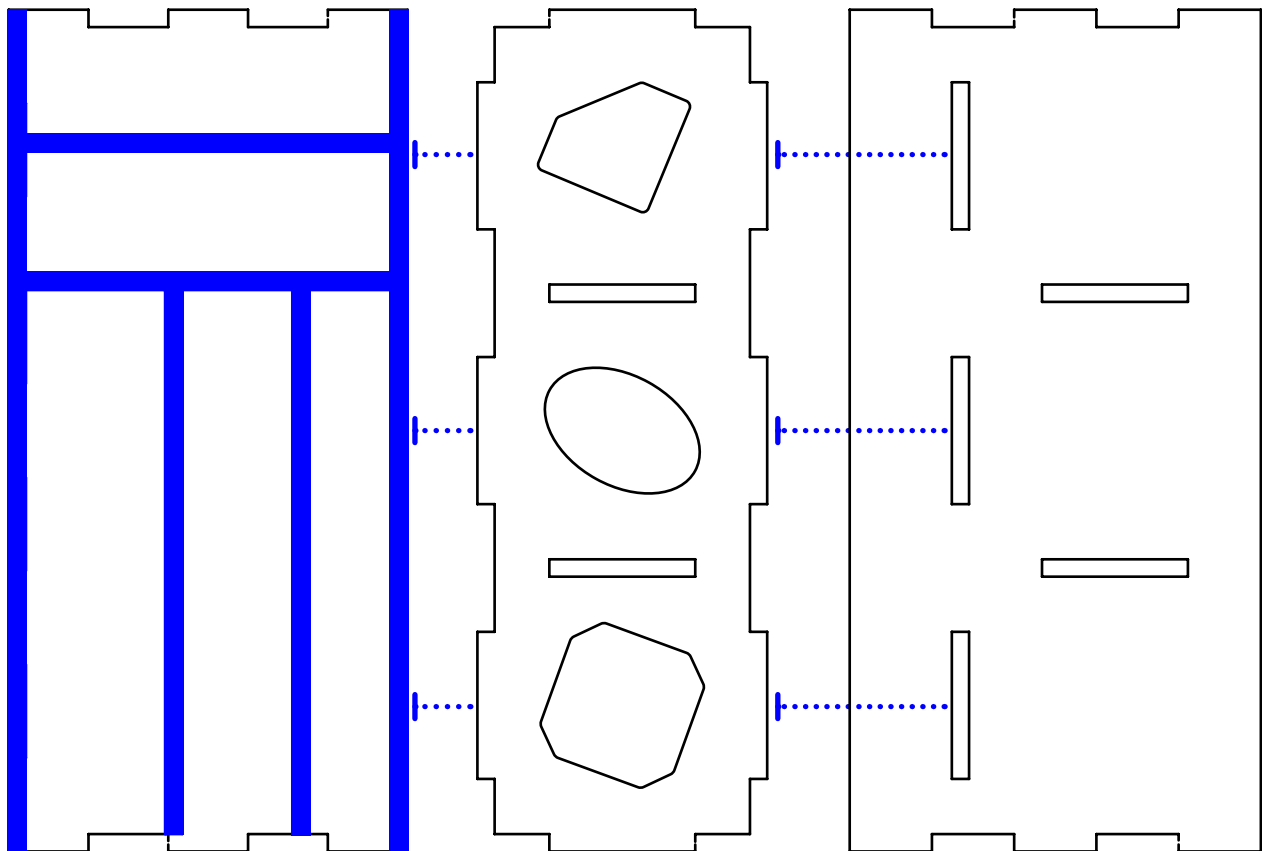




Assembly Step Three:

- a.) Glue and attach gem cut base plate
- b.) Glue and attach side panel

*Blue sections denote previously assembled sections





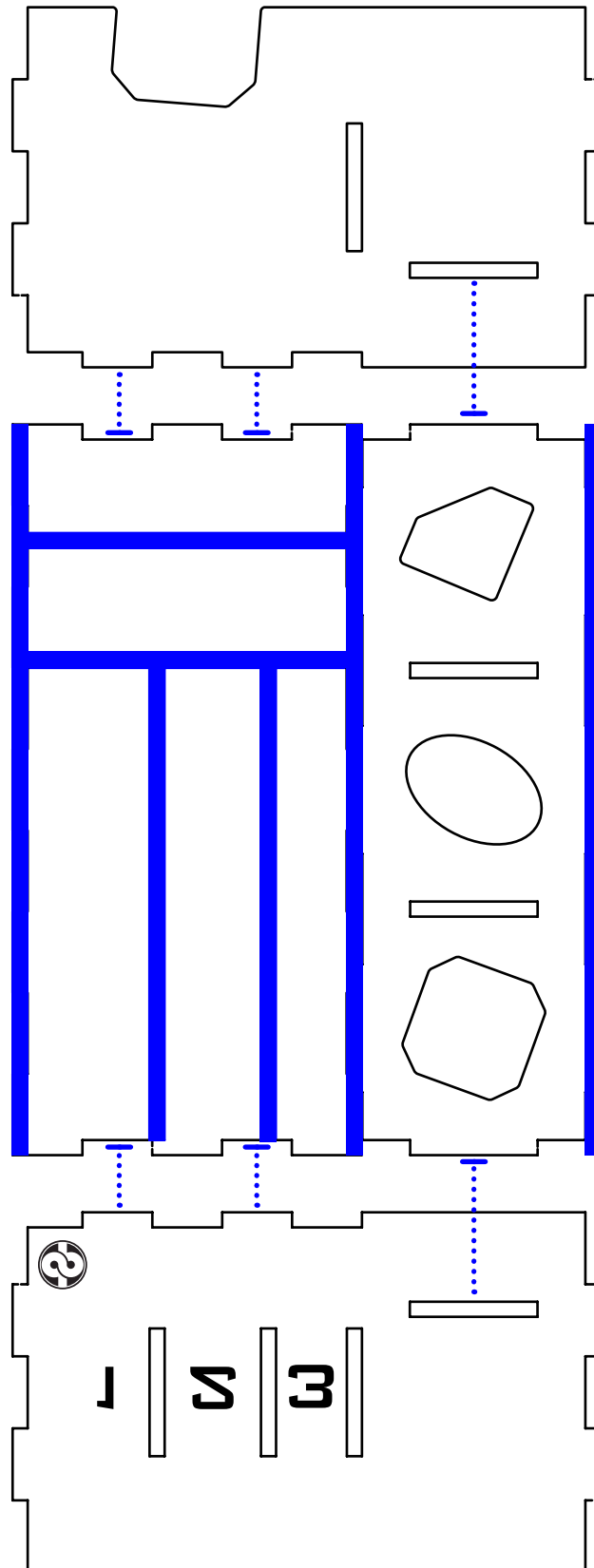
QUICK▶▶START INSERT™ FOR SPLENDOR®



Assembly Step Three:

1. a.) Glue and attach end plates

*Blue sections denote previously assembled sections



This Daedalus Case is compatible with Splendor®. This is a non-licensed product. ALL RIGHTS RESERVED by their respective trademark holders. No challenge to any intellectual property rights is intended or implied by representations of compatibility and no endorsements of any of our products by any other company is implied or represented.



QUICK START INSERT™ FOR
SPLENDOR®

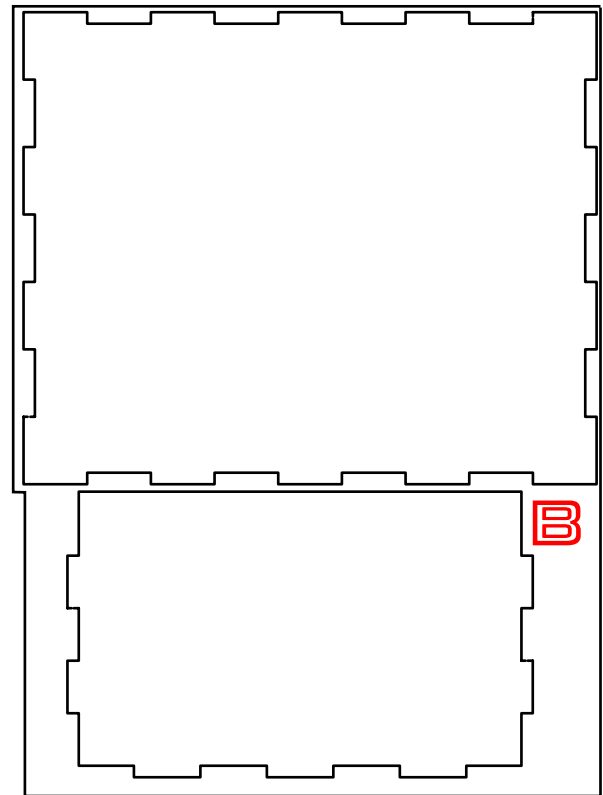
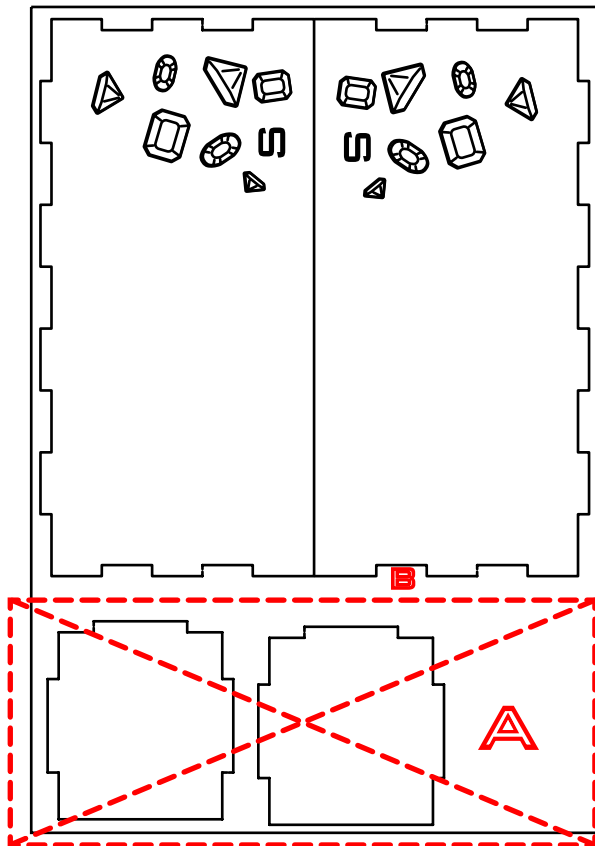
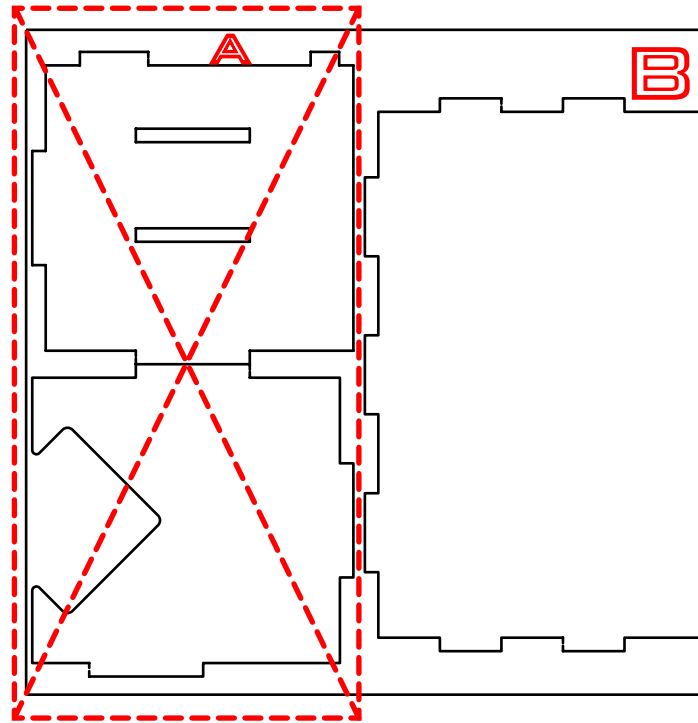
Section B:



This Daedalus Case is compatible with Splendor®. This is a non-licensed product. ALL RIGHTS RESERVED by their respective trademark holders. No challenge to any intellectual property rights is intended or implied by representations of compatibility and no endorsements of any of our products by any other company is implied or represented.



QUICK START INSERT™ FOR SPLENDOR®



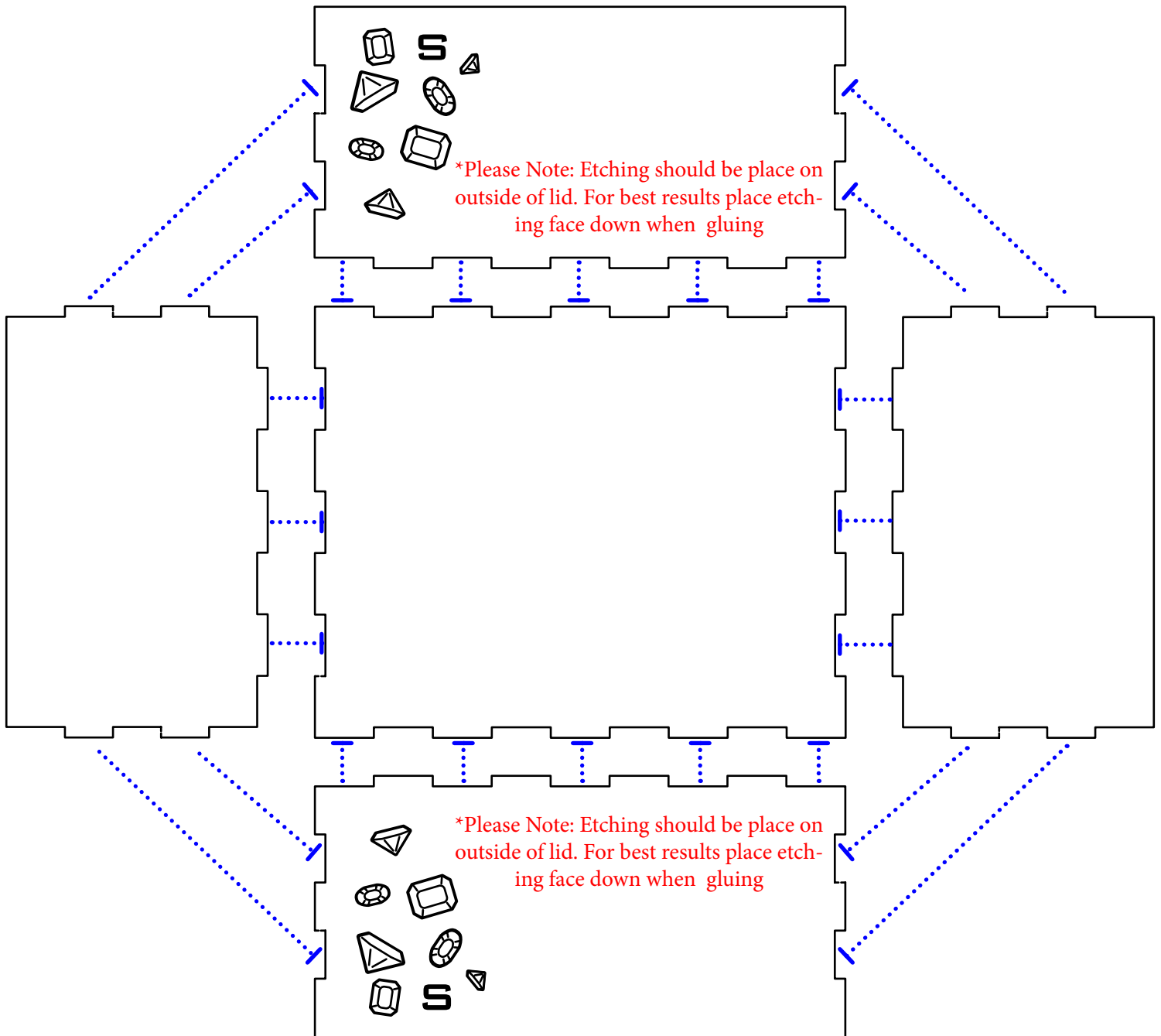
This Daedalus Case is compatible with Splendor®. This is a non-licensed product. ALL RIGHTS RESERVED by their respective trademark holders. No challenge to any intellectual property rights is intended or implied by representations of compatibility and no endorsements of any of our products by any other company is implied or represented.



QUICK START INSERT™ FOR SPLENDOR®

Lid Assembly Step:

1. Glue and attach side plates

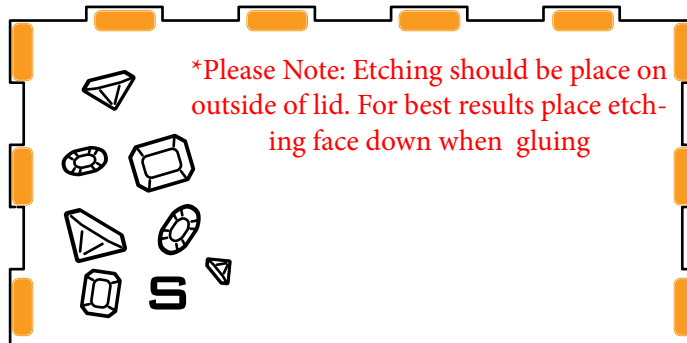
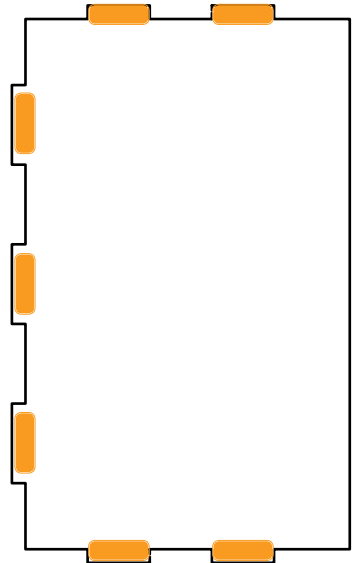
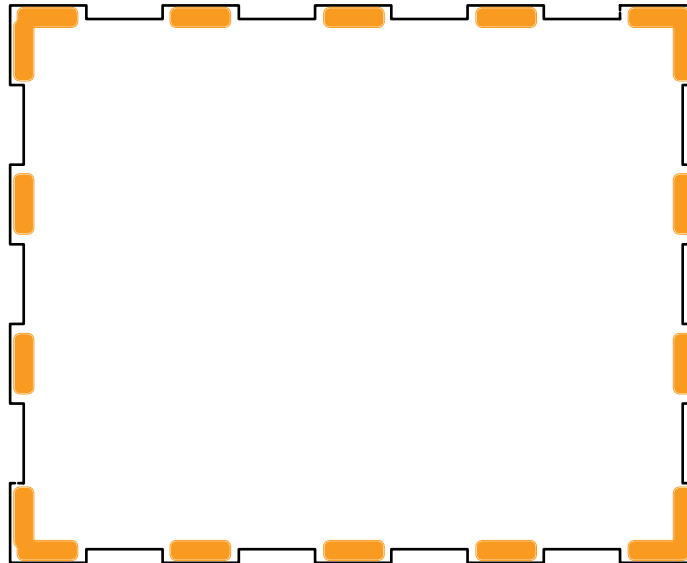
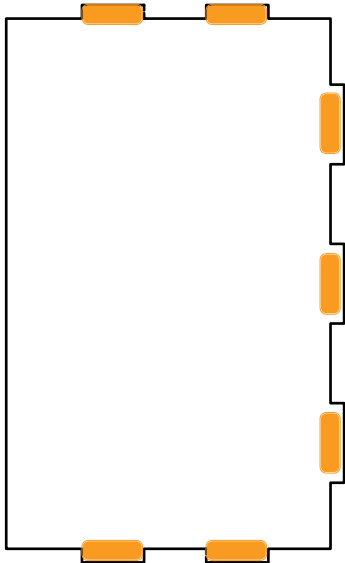
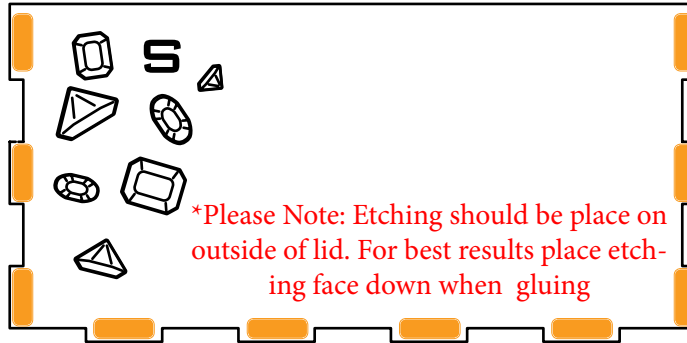


This Daedalus Case is compatible with Splendor®. This is a non-licensed product. ALL RIGHTS RESERVED by their respective trademark holders. No challenge to any intellectual property rights is intended or implied by representations of compatibility and no endorsements of any of our products by any other company is implied or represented.



QUICK START INSERT™ FOR SPLENDOR®

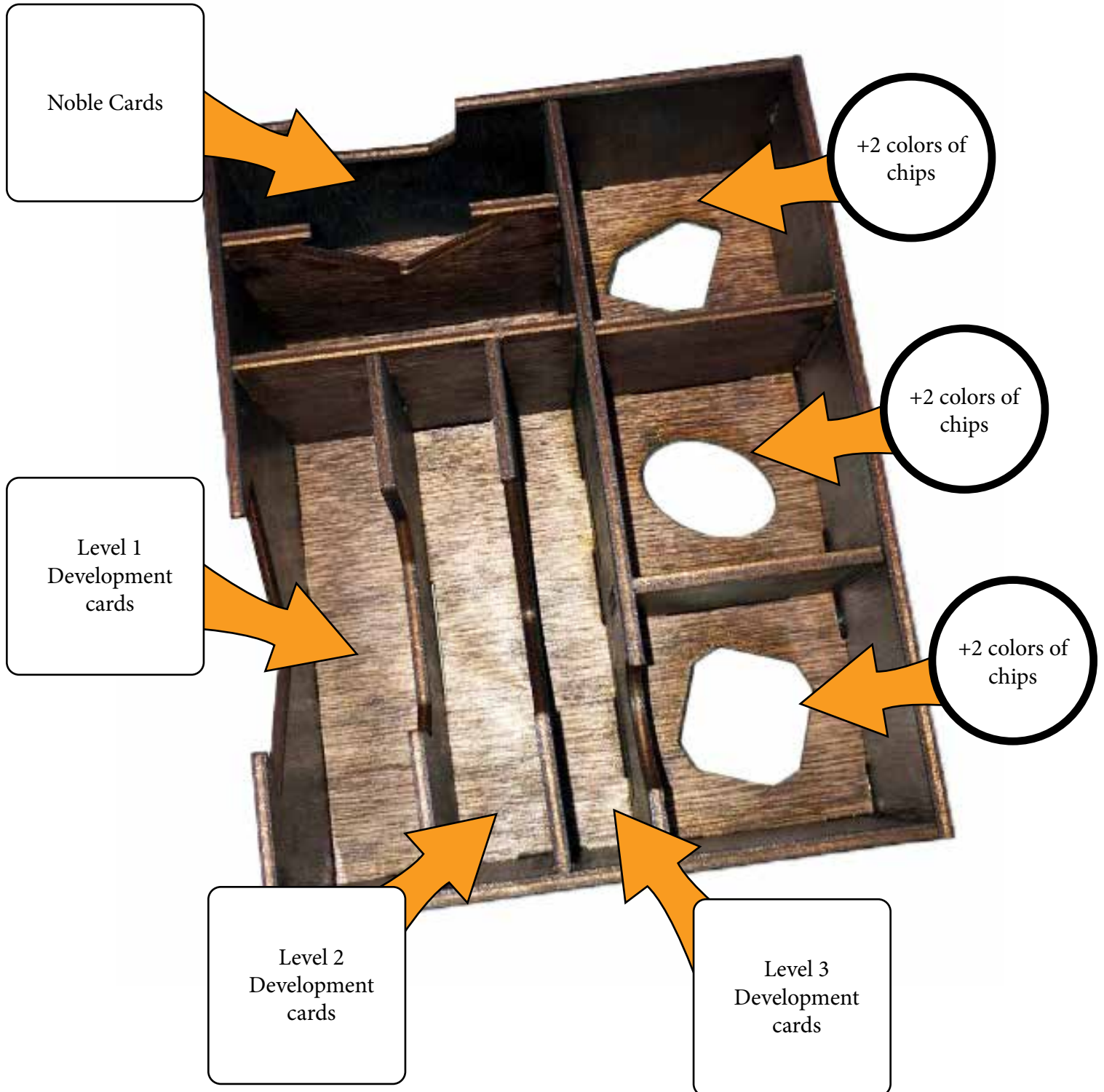
Glue Locations:





QUICKSTART INSERT™ FOR SPLENDOR®

Case Layout:



This Daedalus Case is compatible with Splendor®. This is a non-licensed product. ALL RIGHTS RESERVED by their respective trademark holders. No challenge to any intellectual property rights is intended or implied by representations of compatibility and no endorsements of any of our products by any other company is implied or represented.