

ASSEMBLY INSTRUCTIONS FOR



less work, more game



STAR WARS REBELLION®

QUICK >> START INSERT™

STAR WARS REBELLION® is a registered trademark of Fantasy Flight Games LLC. Any mention of STAR WARS REBELLION® is for reference purposes only. ALL RIGHTS RESERVED by their respective trademark holders. No challenge to any intellectual property rights is intended or implied by representations of compatibility and no endorsements of any of our products by any other company is implied or represented.



QUICK START INSERT™ FOR STAR WARS REBELLION®

General Assembly Instructions

The following are basic instructions for any of the Quick Start Inserts:

- All panels are labeled with an Alphabet letter (A, B, C, etc.). First sort all panels into piles by their letters before you begin to assemble.
- Layout the parts in the diagrams provided, to ensure you have all the parts
- Glue only the edges that come into contact with the wood (remove excess immediately)
- Allow 24 hours to dry before using

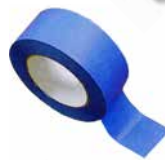
Tips & Tricks

- Some of the parts might need to be slightly sanded on the edges for a perfect fit.
- Sometimes tapping the pieces with a small amount of force (with a mallet) helps create a tighter fit.
- Taping the outside corners of the boxes helps it hold in place while the glue is drying.
- If you break a part, don't hesitate calling we always carry spares – you just need to cover shipping. (most spares can be send in an envelope, if so we don't charge for shipping)

Assembly Supplies



Beacon 527 or wood-glue
(we recommend supper-glue)



Painters blue tape
(painter's tape helps protect the finish)



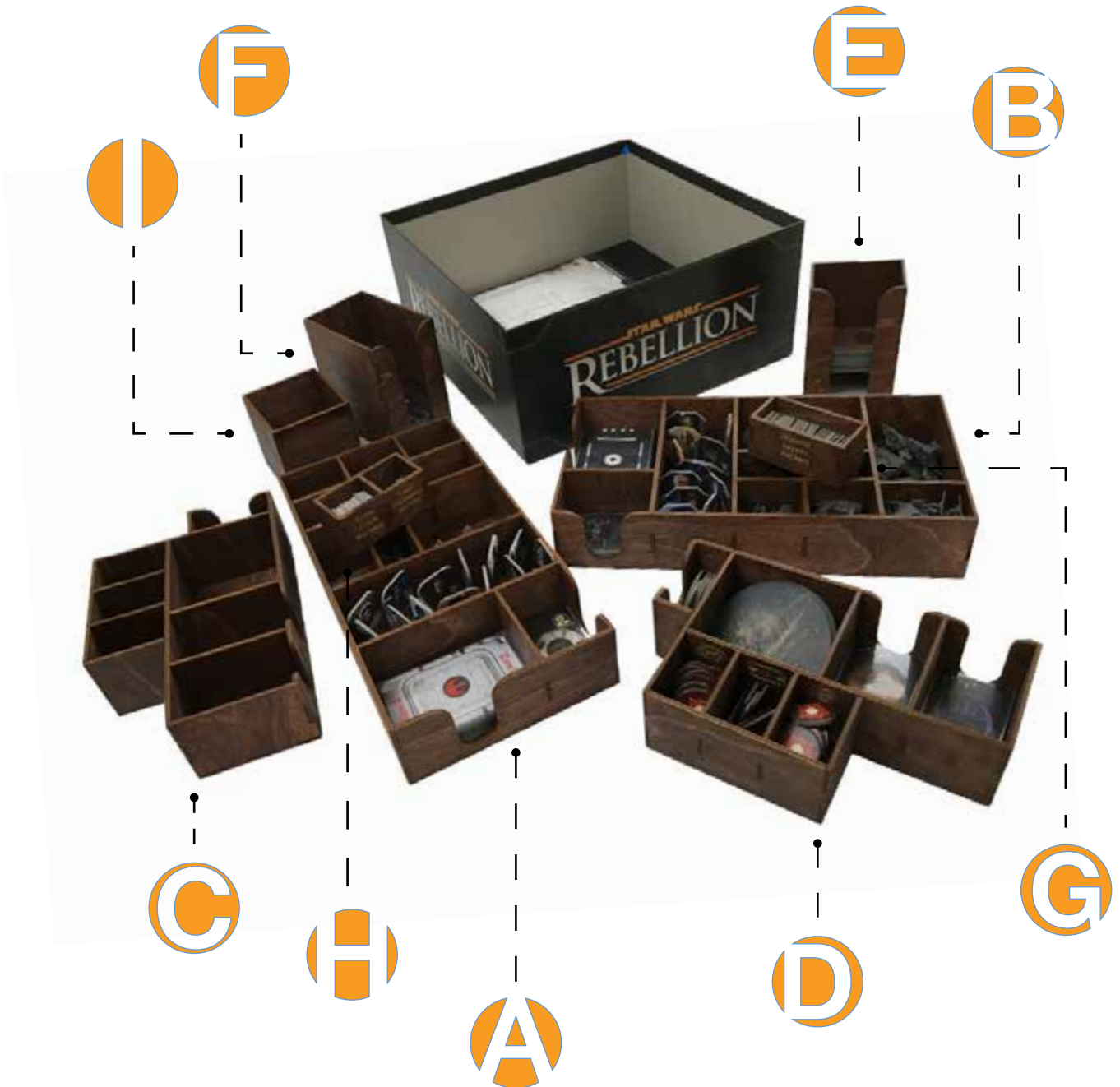
Rubber mallet
(or something to tap the pieces together)



Cotton swap/ Q-tip
(or something to wipe the excess glue)



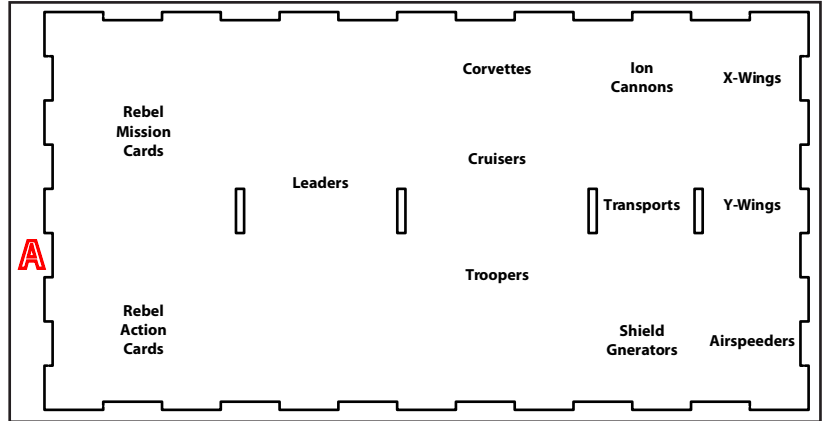
QUICK START INSERT™ FOR STAR WARS REBELLION®



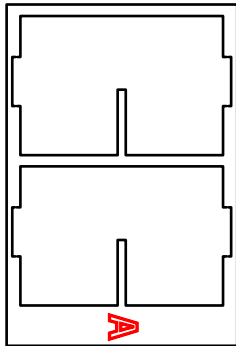
This Quick Start Insert is compatible with STAR WARS REBELLION and its expansions. This is a non-licensed product. ALL RIGHTS RESERVED by their respective trademark holders. No challenge to any intellectual property rights is intended or implied by representations of compatibility and no endorsements of any of our products by any other company is implied or represented.



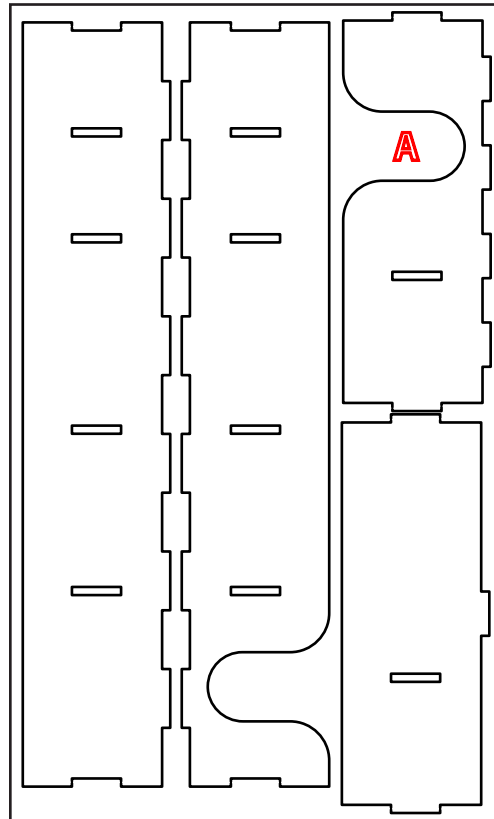
Sheet A1:



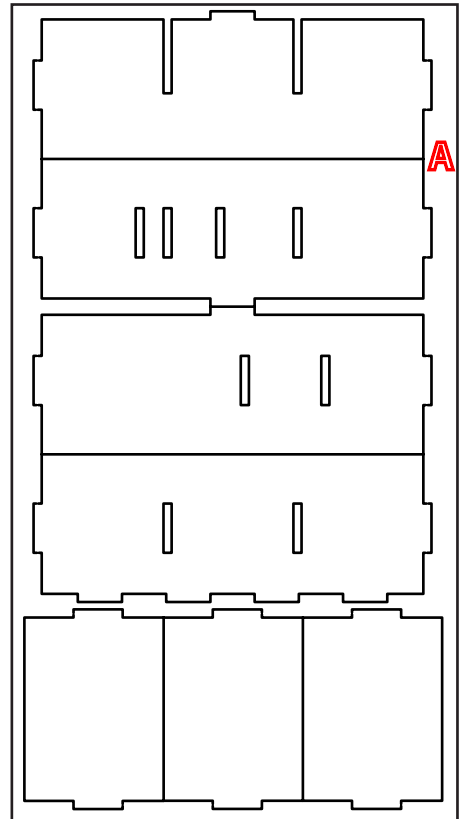
Sheet A2:



Sheet A3:



Sheet A4:

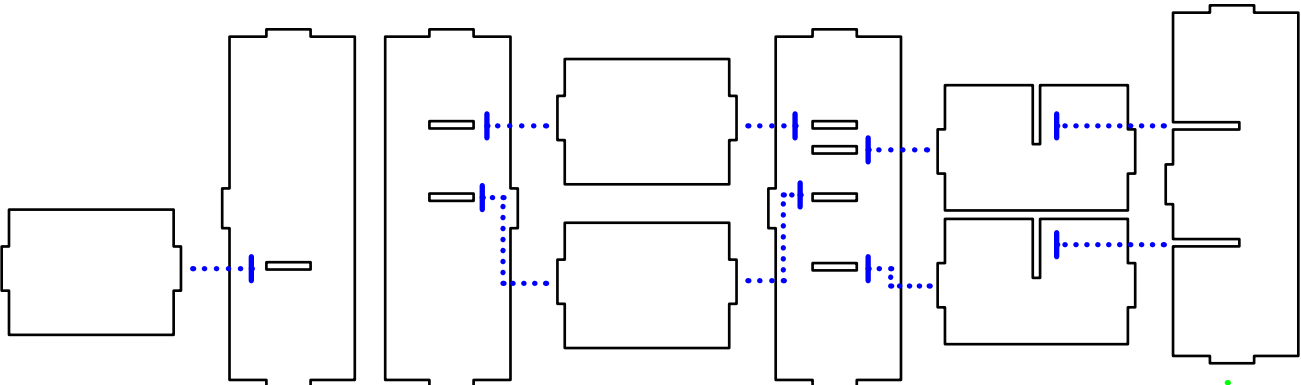




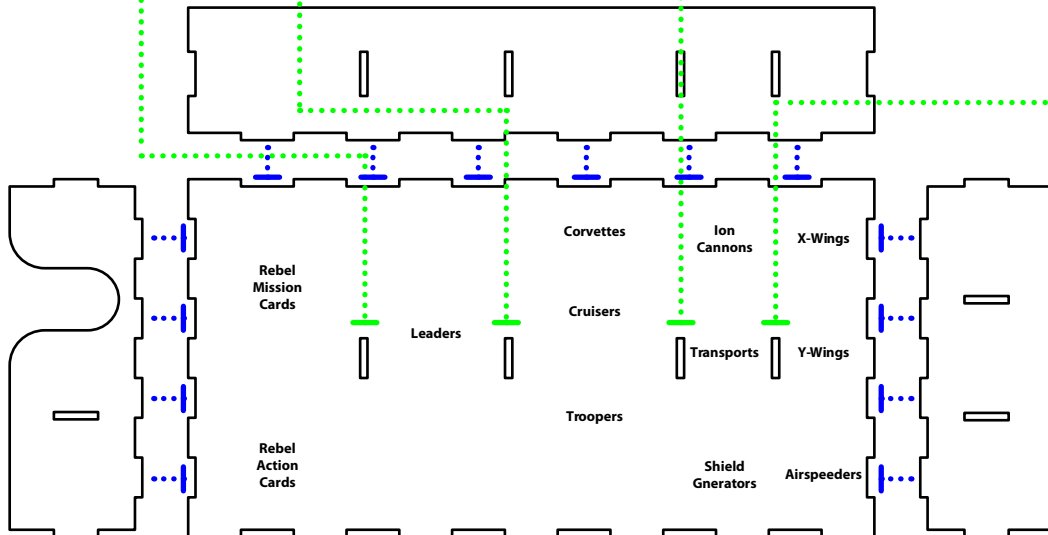
Recommended Assembly Sequence

1. Insert center structure first, matching numbers and orientation.
2. Glue all side pieces

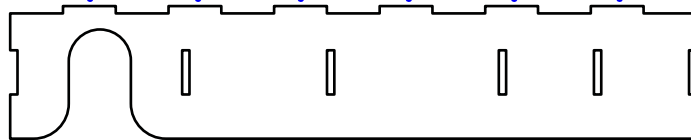
1.



2.



3.





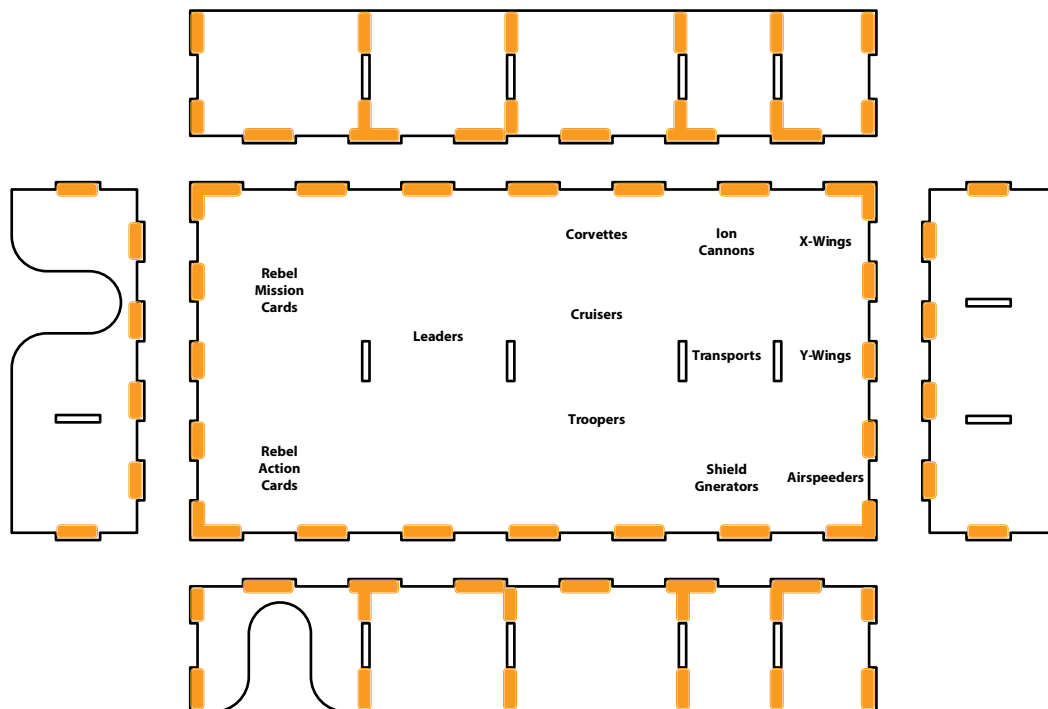
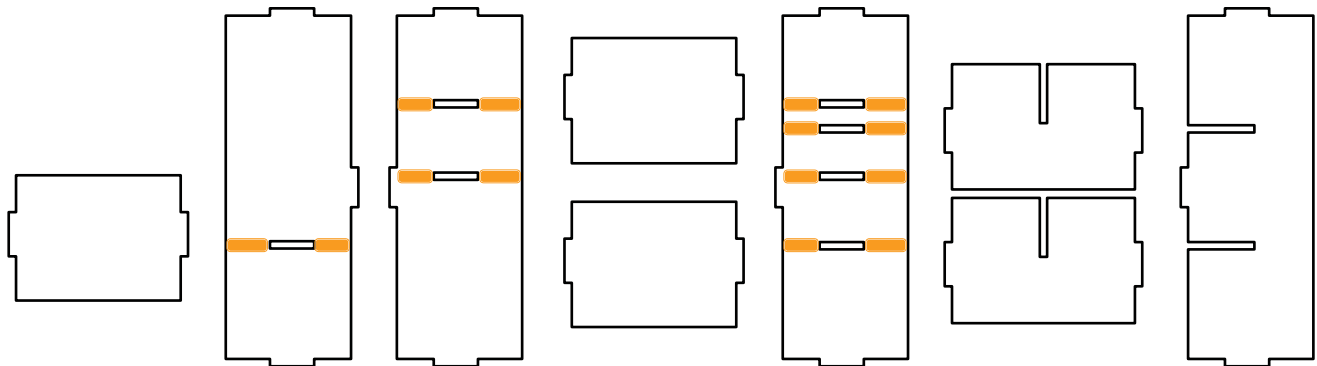
QUICK » START INSERT™ FOR
STAR WARS REBELLION®



Glue Tips:

1. Glue, place pieces together, wipe of excess glue and THEN tape firmly (Quickly, speed is your friend)
2. Glue each exterior joint where two pieces come together
3. Don't glue tabs that slide into other pieces of wood (it just scrapes off)

Glue Locations:



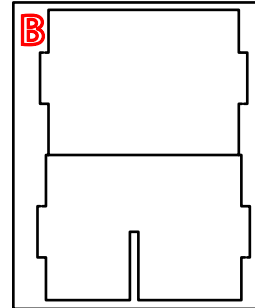
This Quick Start Insert is compatible with STAR WARS REBELLION and its expansions. This is a non-licensed product. ALL RIGHTS RESERVED by their respective trademark holders. No challenge to any intellectual property rights is intended or implied by representations of compatibility and no endorsements of any of our products by any other company is implied or represented.



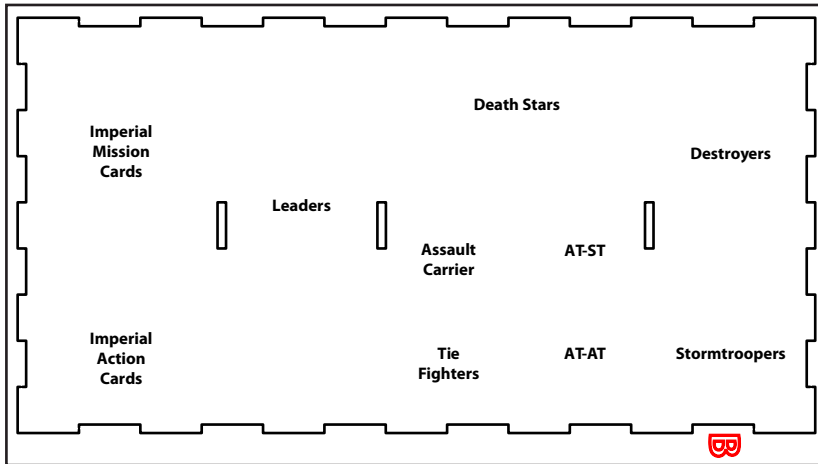
QUICK » START INSERT™ FOR
STAR WARS REBELLION®



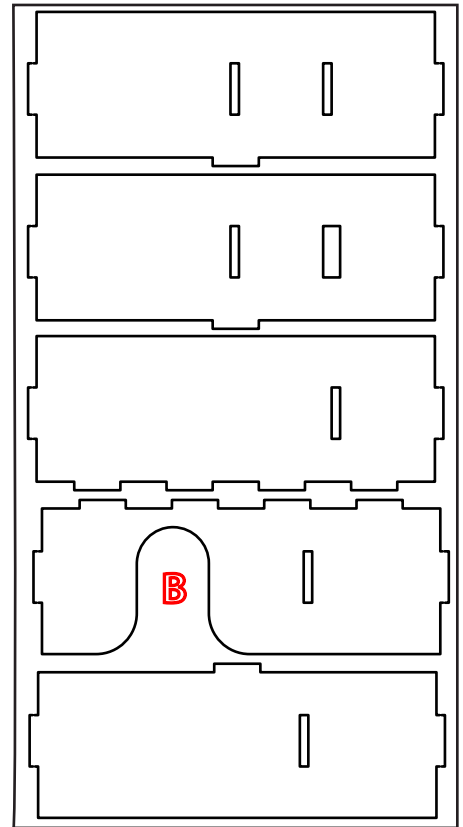
Sheet B1:



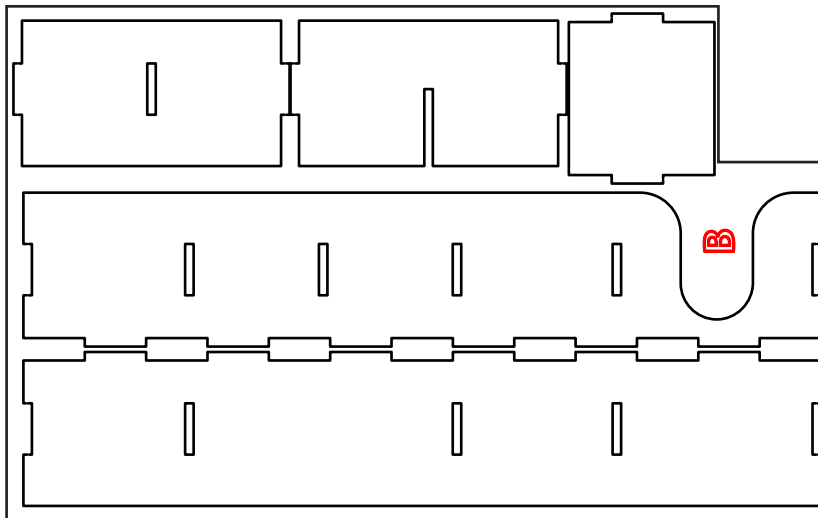
Sheet B2:



Sheet B3:



Sheet B4:

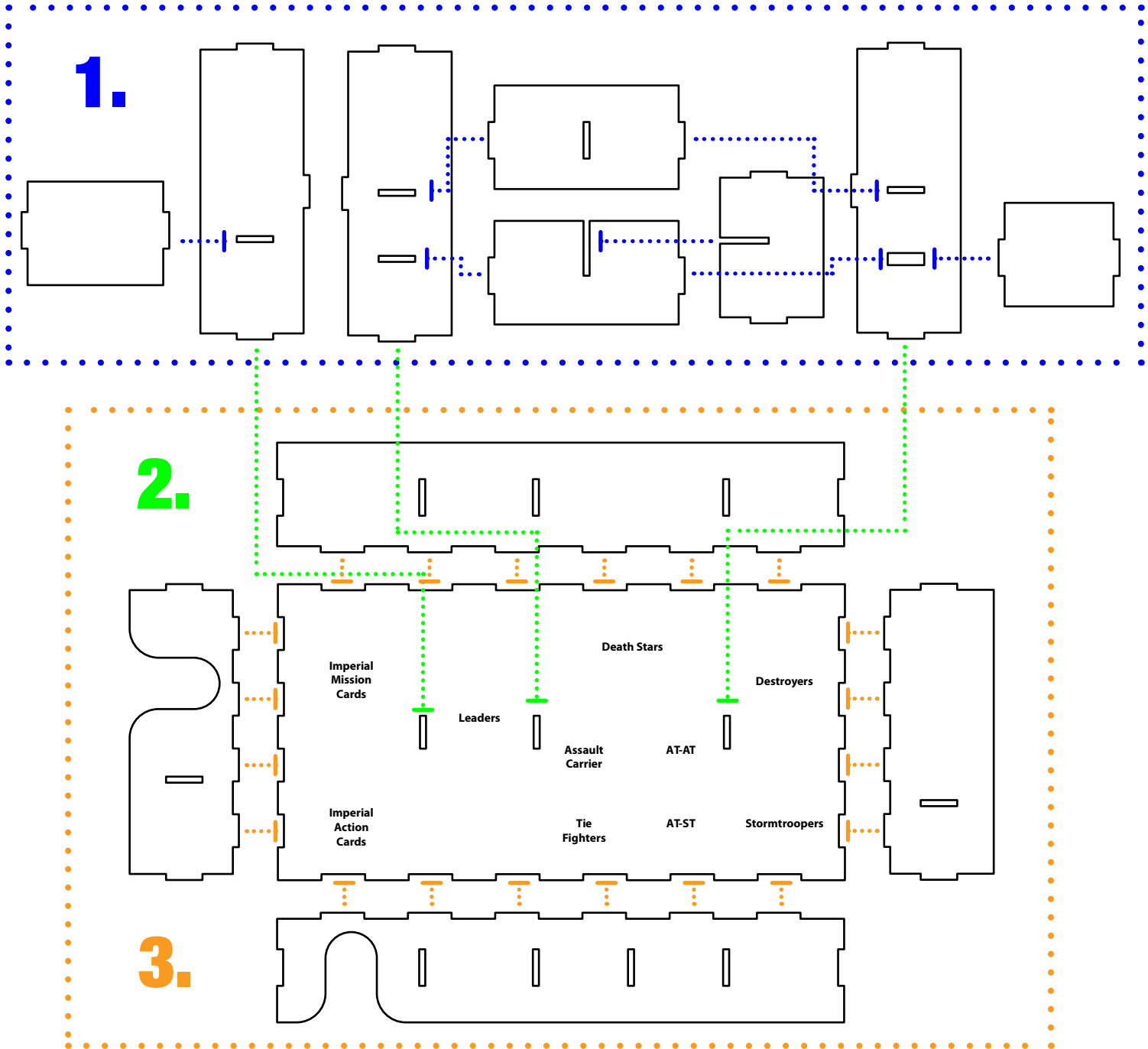


This Quick Start Insert is compatible with STAR WARS REBELLION and its expansions. This is a non-licensed product. ALL RIGHTS RESERVED by their respective trademark holders. No challenge to any intellectual property rights is intended or implied by representations of compatibility and no endorsements of any of our products by any other company is implied or represented.



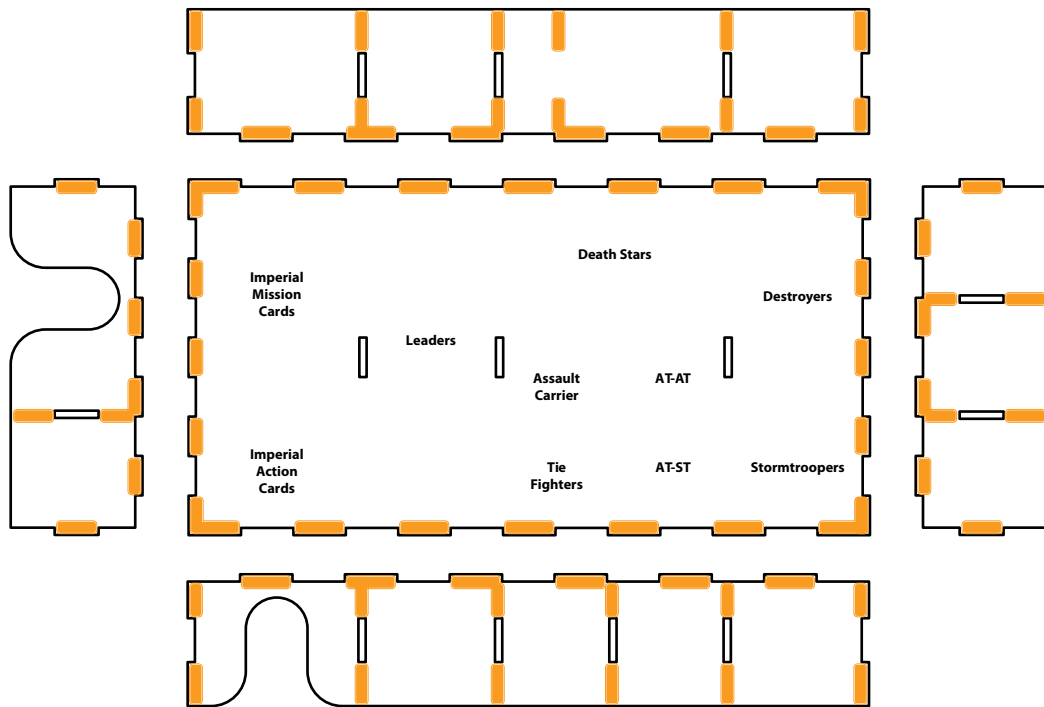
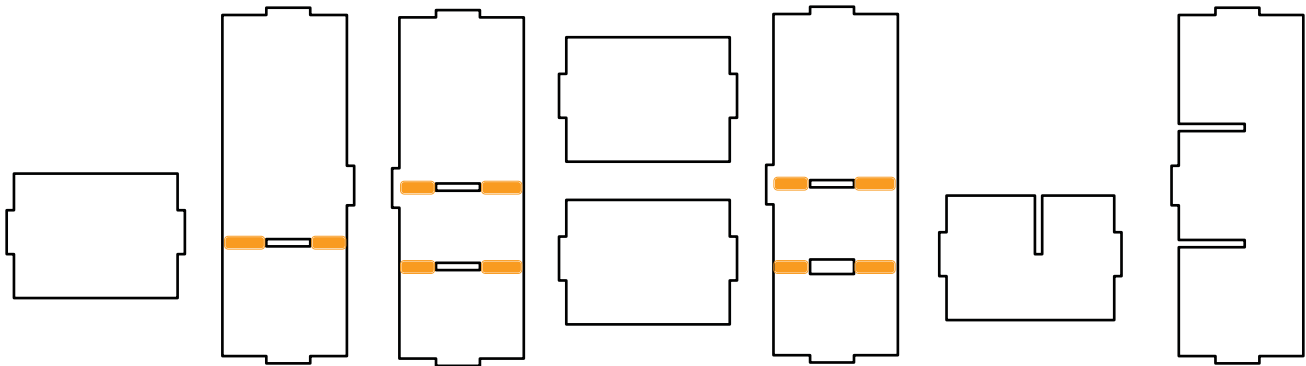
Recommended Assembly Sequence

1. Insert center structure first, matching numbers and orientation.
2. Glue all side pieces



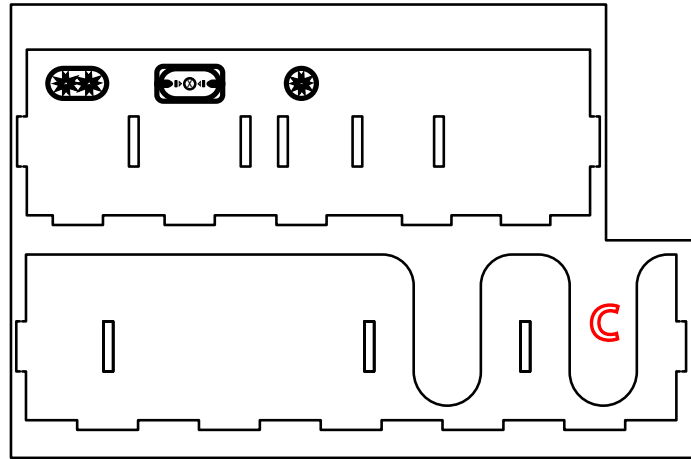


Glue Locations:

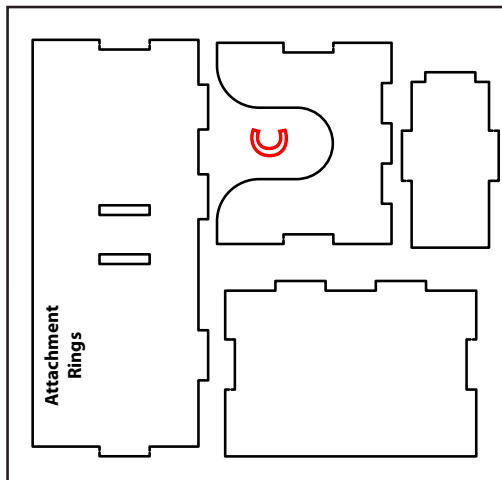




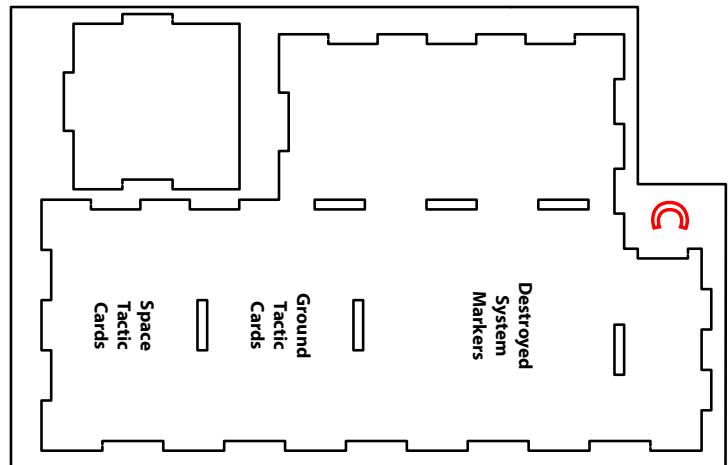
Sheet C1:



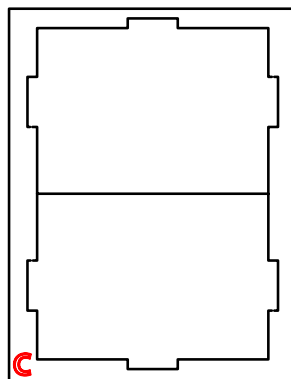
Sheet C2:



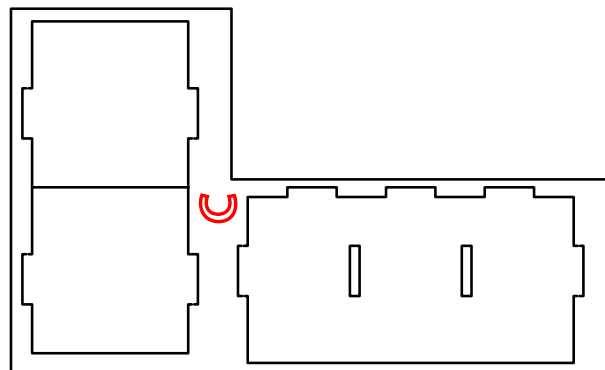
Sheet C3:



Sheet C4:



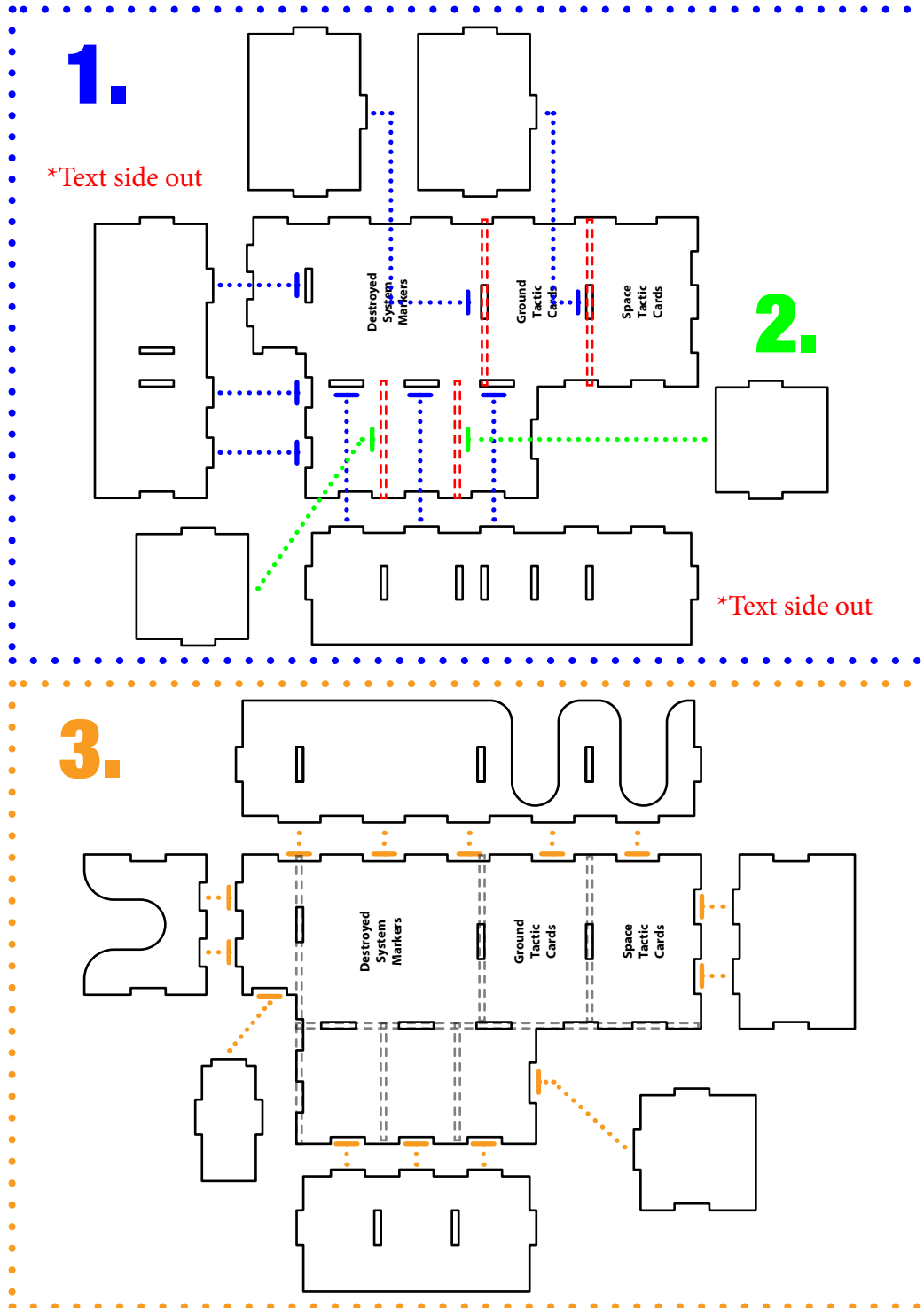
Sheet C5:





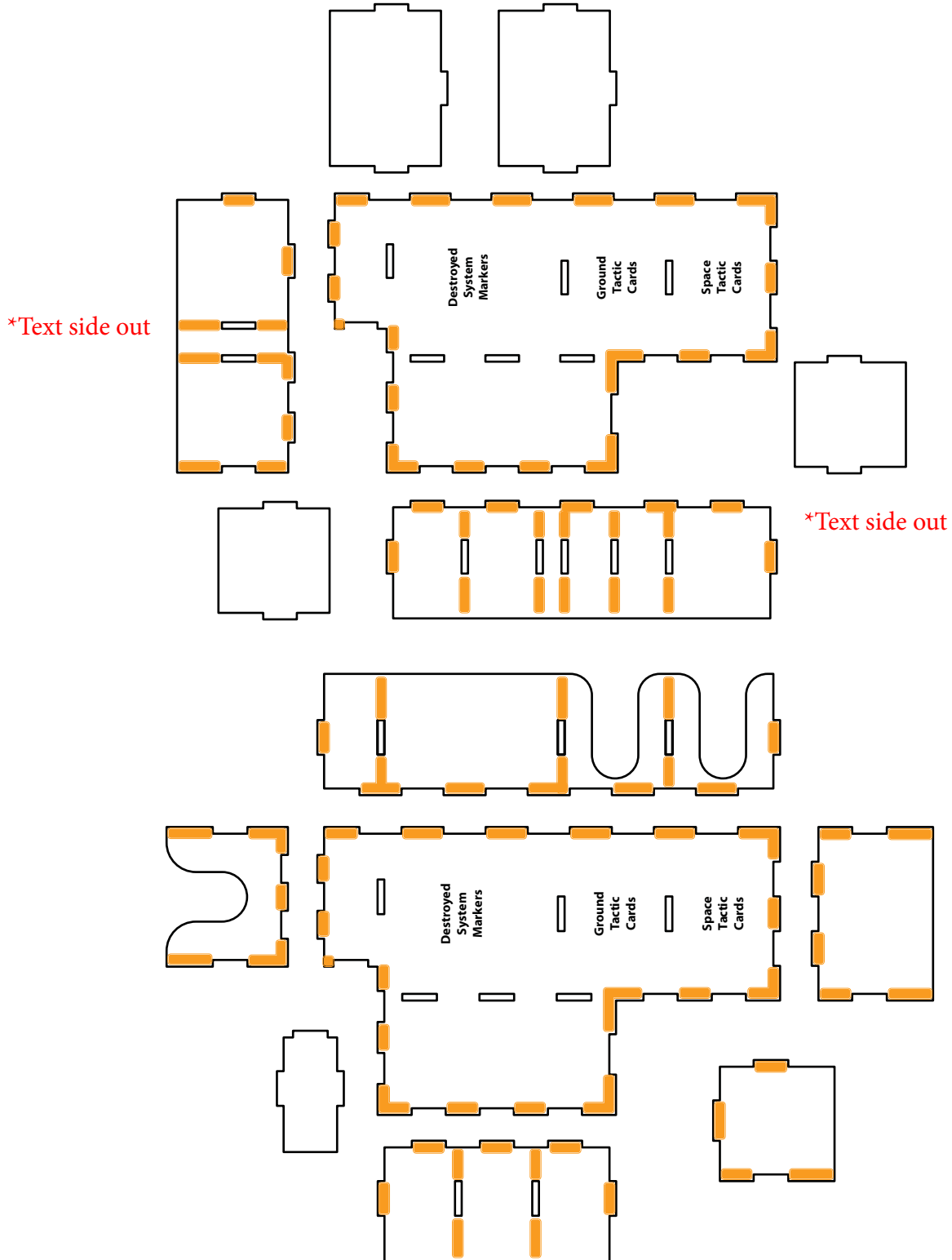
Recommended Assembly Sequence

1. Glue and assemble all interior pieces
2. Glue and insert all interior pieces to base plate
3. Glue and assemble all side pieces





Glue Locations:

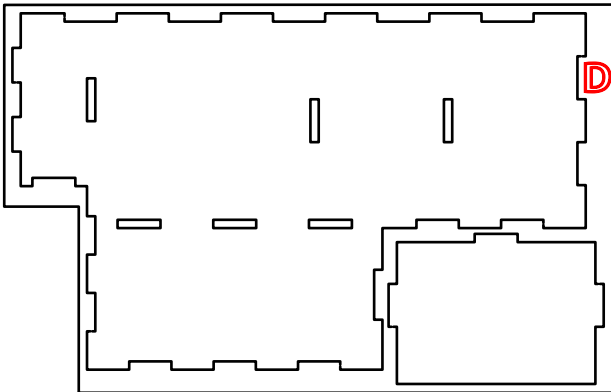




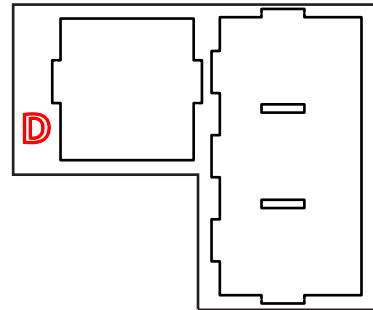
QUICK » START INSERT™ FOR
STAR WARS REBELLION®



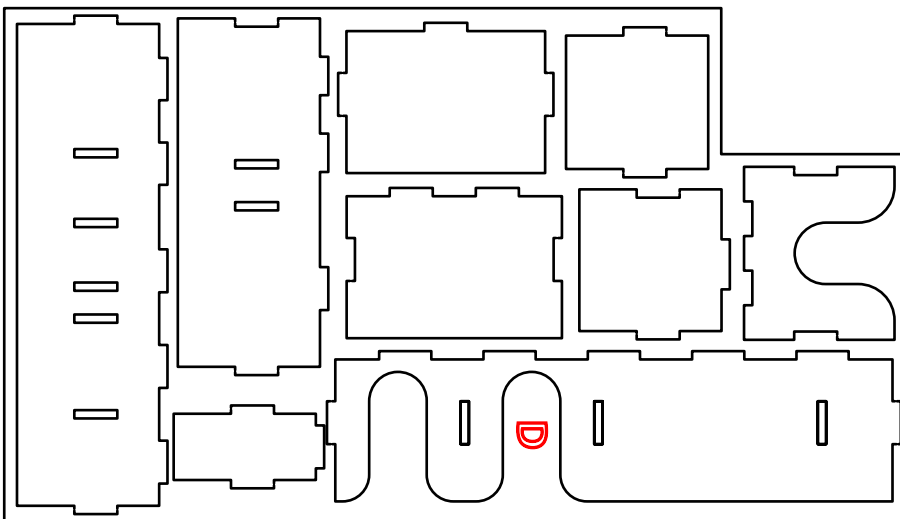
Sheet D1:



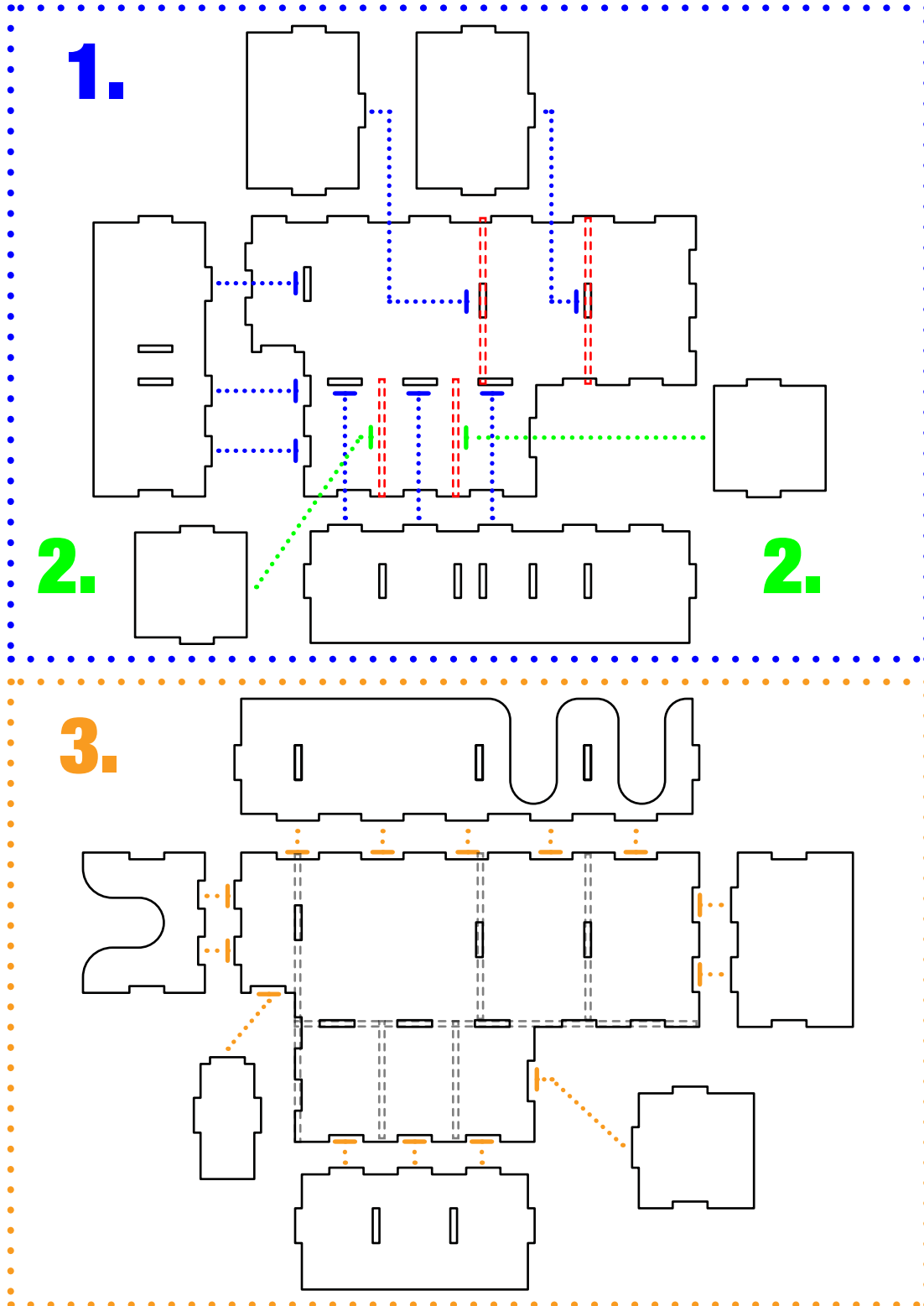
Sheet D2:



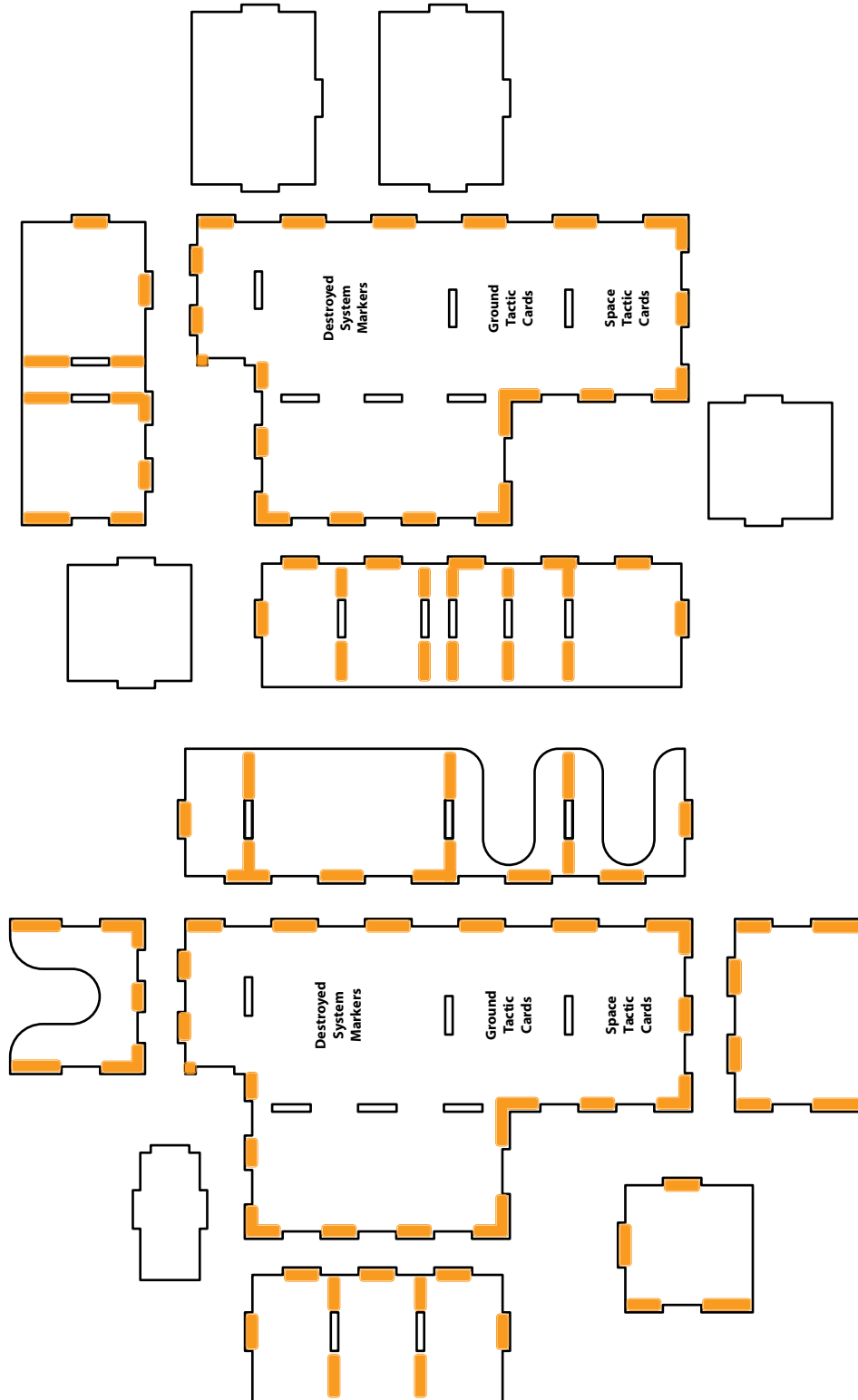
Sheet D3:



This Quick Start Insert is compatible with STAR WARS REBELLION and its expansions. This is a non-licensed product. ALL RIGHTS RESERVED by their respective trademark holders. No challenge to any intellectual property rights is intended or implied by representations of compatibility and no endorsements of any of our products by any other company is implied or represented.



This Quick Start Insert is compatible with STAR WARS REBELLION and its expansions. This is a non-licensed product. ALL RIGHTS RESERVED by their respective trademark holders. No challenge to any intellectual property rights is intended or implied by representations of compatibility and no endorsements of any of our products by any other company is implied or represented.

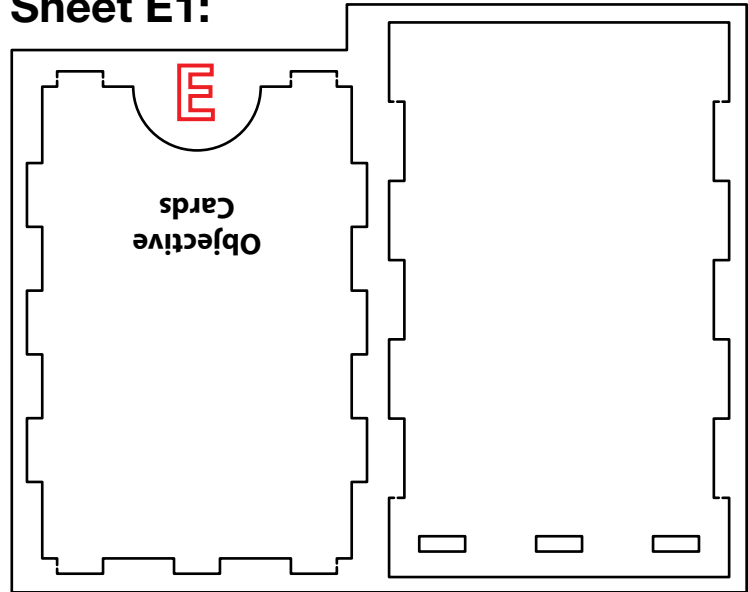




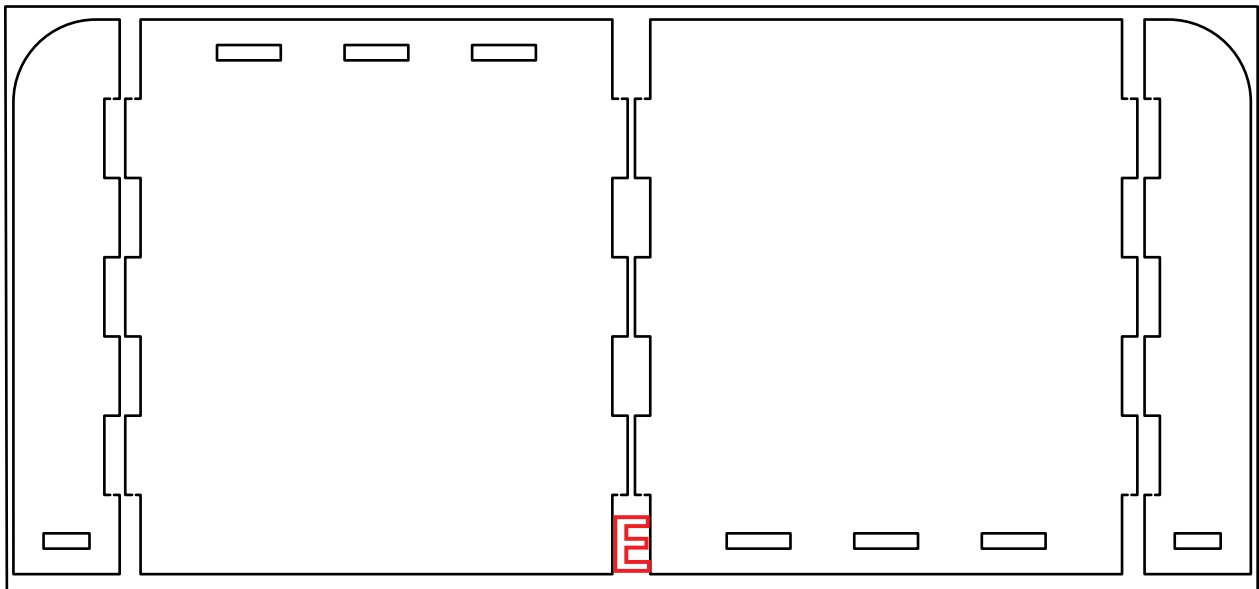
QUICK » START INSERT™ FOR
STAR WARS REBELLION®



Sheet E1:



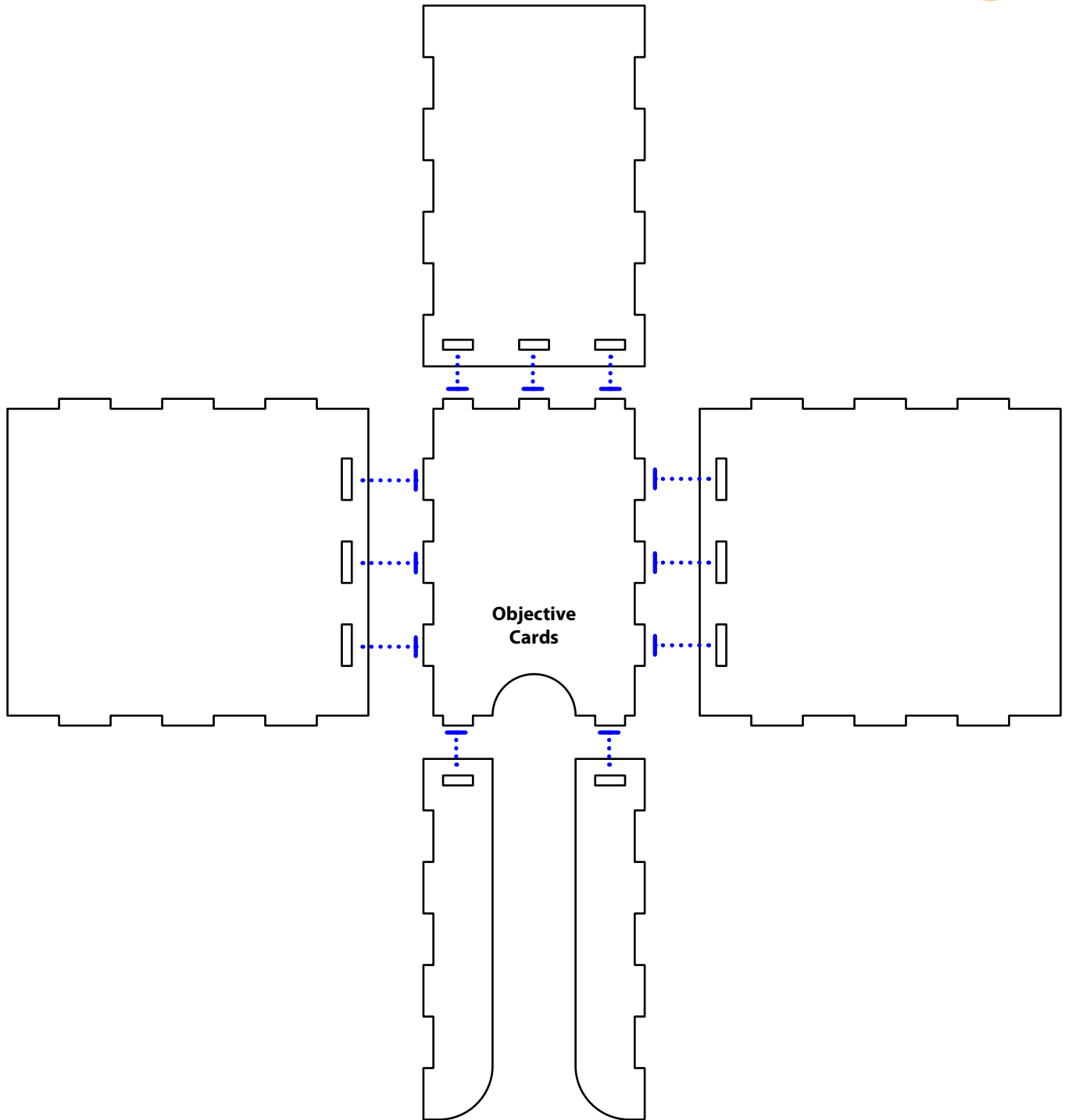
Sheet E2:



This Quick Start Insert is compatible with STAR WARS REBELLION and its expansions. This is a non-licensed product. ALL RIGHTS RESERVED by their respective trademark holders. No challenge to any intellectual property rights is intended or implied by representations of compatibility and no endorsements of any of our products by any other company is implied or represented.



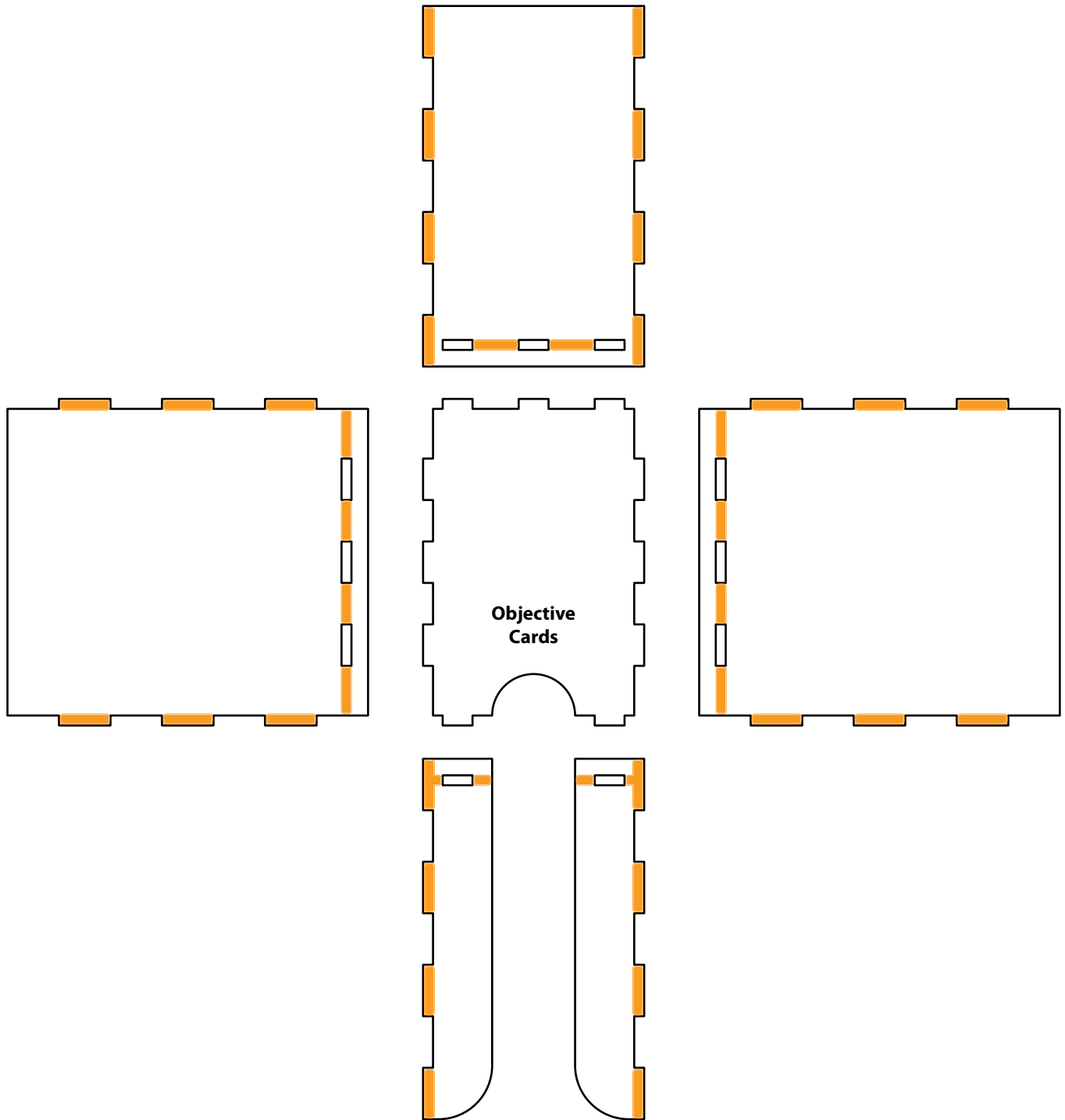
QUICK » START INSERT™ FOR
STAR WARS REBELLION®



This Quick Start Insert is compatible with STAR WARS REBELLION and its expansions. This is a non-licensed product. ALL RIGHTS RESERVED by their respective trademark holders. No challenge to any intellectual property rights is intended or implied by representations of compatibility and no endorsements of any of our products by any other company is implied or represented.



QUICK » START INSERT™ FOR
STAR WARS REBELLION®



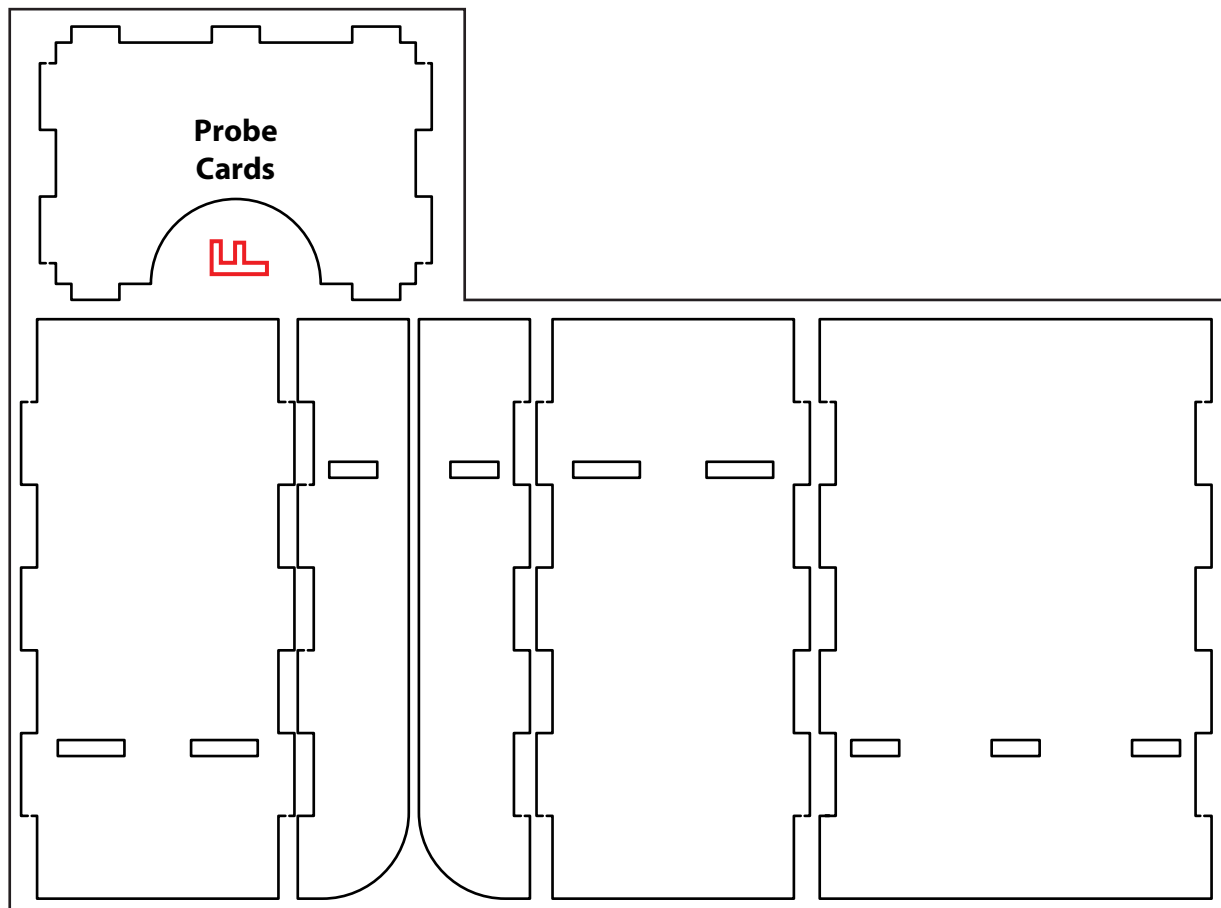
This Quick Start Insert is compatible with STAR WARS REBELLION and its expansions. This is a non-licensed product. ALL RIGHTS RESERVED by their respective trademark holders. No challenge to any intellectual property rights is intended or implied by representations of compatibility and no endorsements of any of our products by any other company is implied or represented.



QUICK » START INSERT™ FOR
STAR WARS REBELLION®



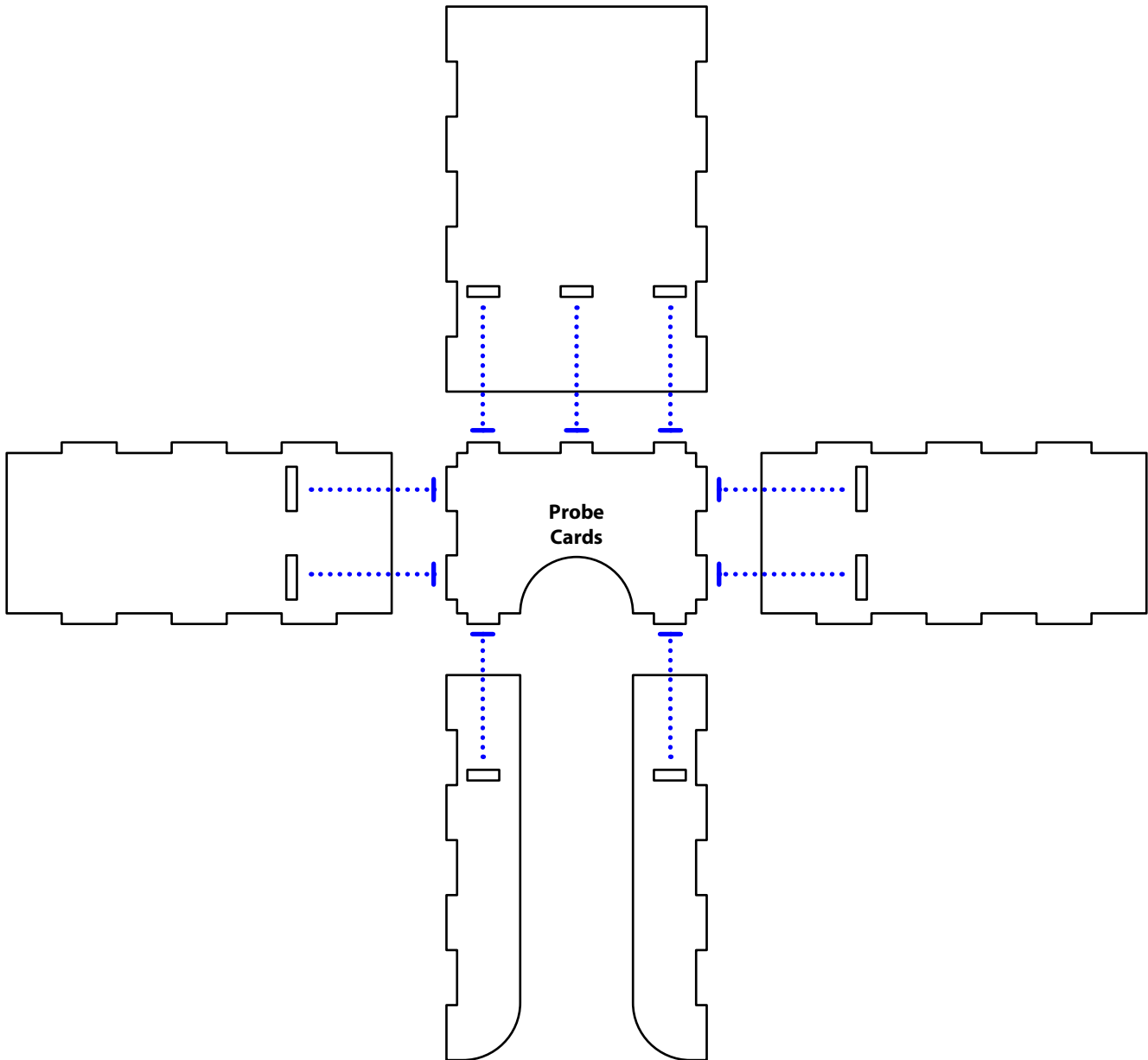
Sheet F1:



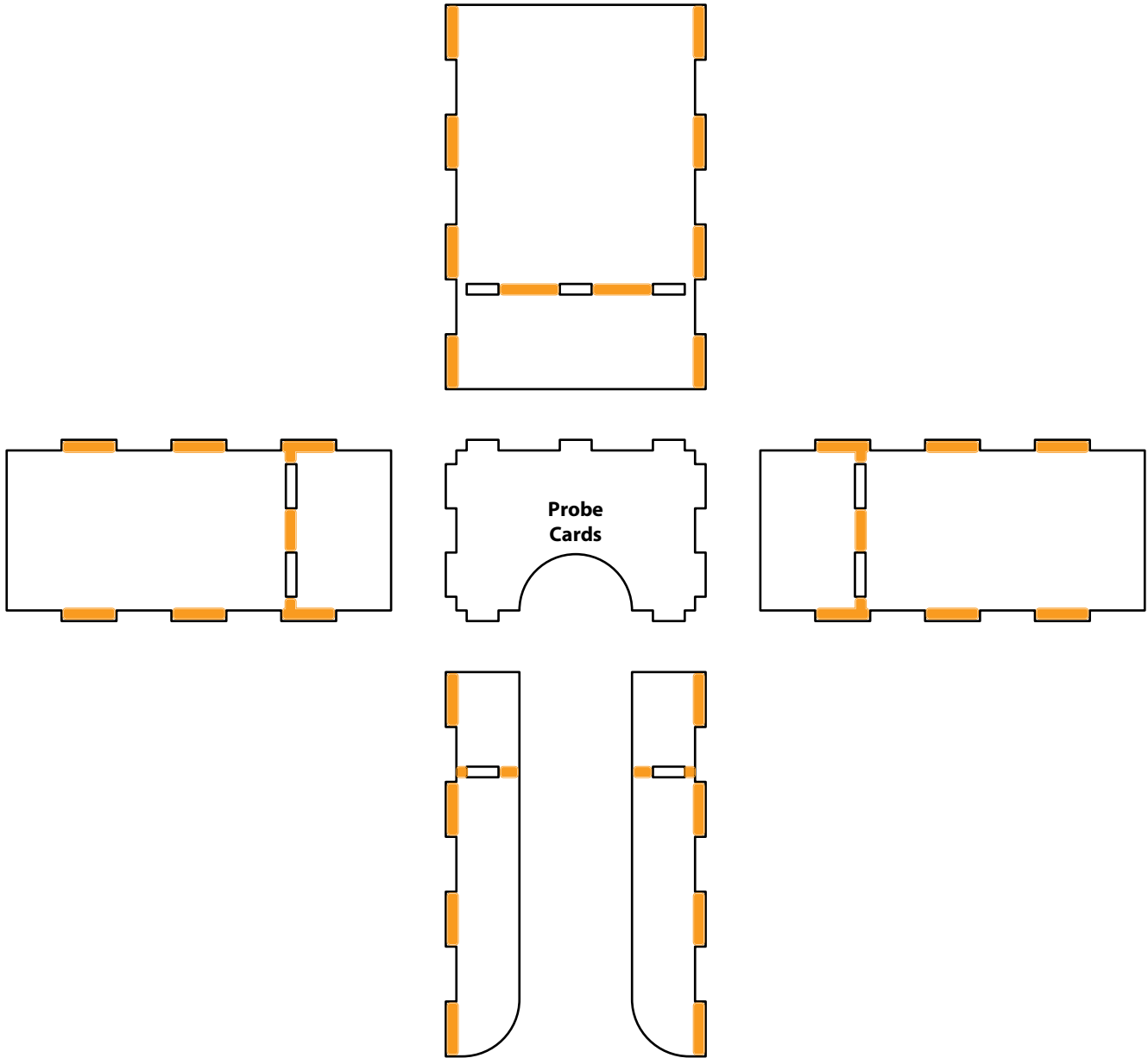
This Quick Start Insert is compatible with STAR WARS REBELLION and its expansions. This is a non-licensed product. ALL RIGHTS RESERVED by their respective trademark holders. No challenge to any intellectual property rights is intended or implied by representations of compatibility and no endorsements of any of our products by any other company is implied or represented.



QUICK » START INSERT™ FOR
STAR WARS REBELLION®



This Quick Start Insert is compatible with STAR WARS REBELLION and its expansions. This is a non-licensed product. ALL RIGHTS RESERVED by their respective trademark holders. No challenge to any intellectual property rights is intended or implied by representations of compatibility and no endorsements of any of our products by any other company is implied or represented.

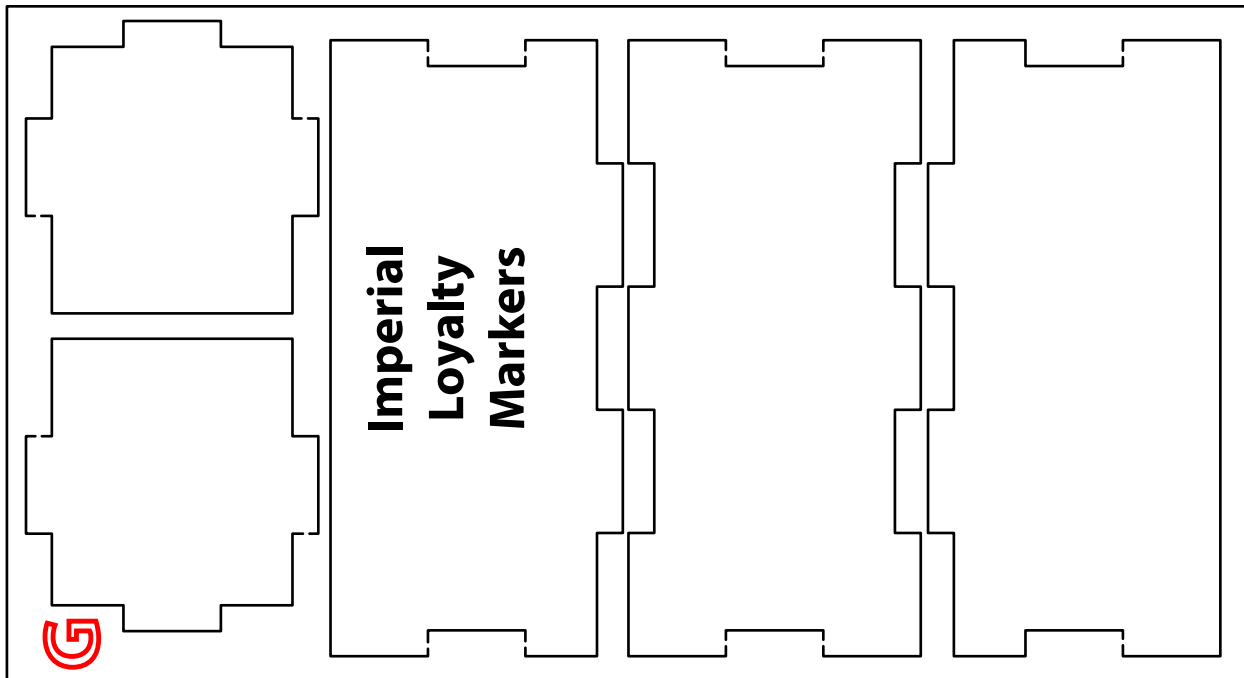




QUICK » START INSERT™ FOR
STAR WARS REBELLION®



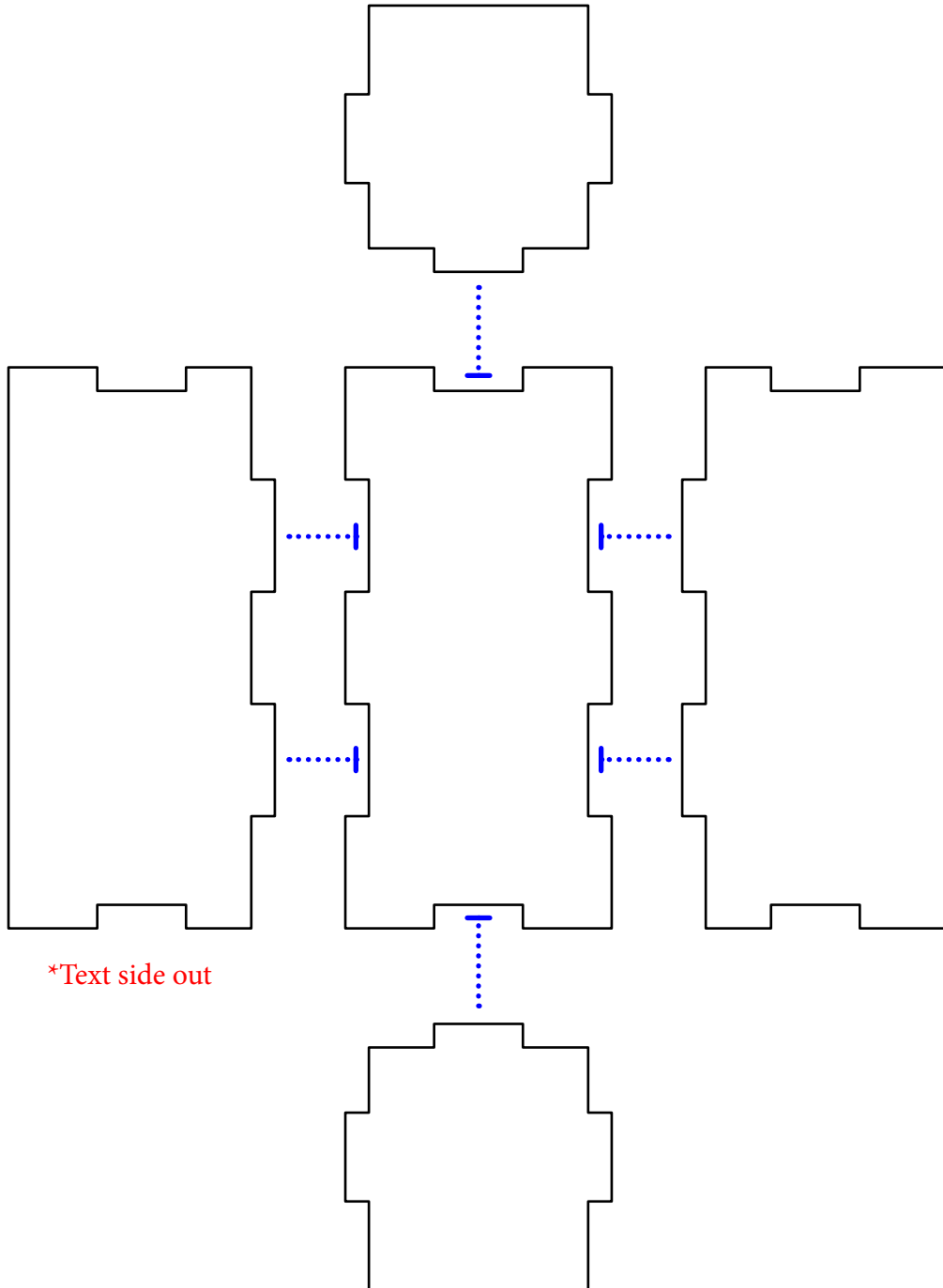
Sheet G1:



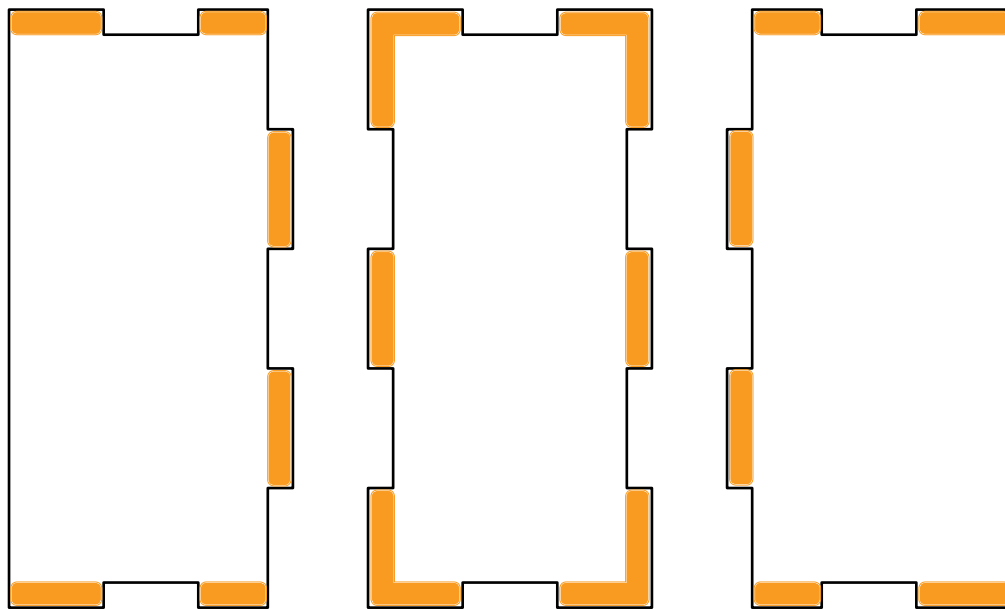
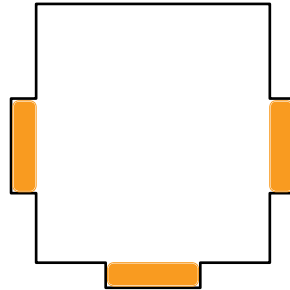
This Quick Start Insert is compatible with STAR WARS REBELLION and its expansions. This is a non-licensed product. ALL RIGHTS RESERVED by their respective trademark holders. No challenge to any intellectual property rights is intended or implied by representations of compatibility and no endorsements of any of our products by any other company is implied or represented.



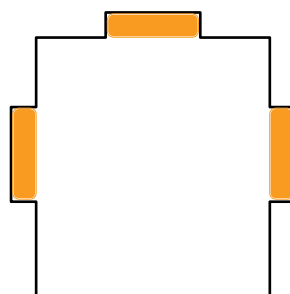
QUICK » START INSERT™ FOR
STAR WARS REBELLION®

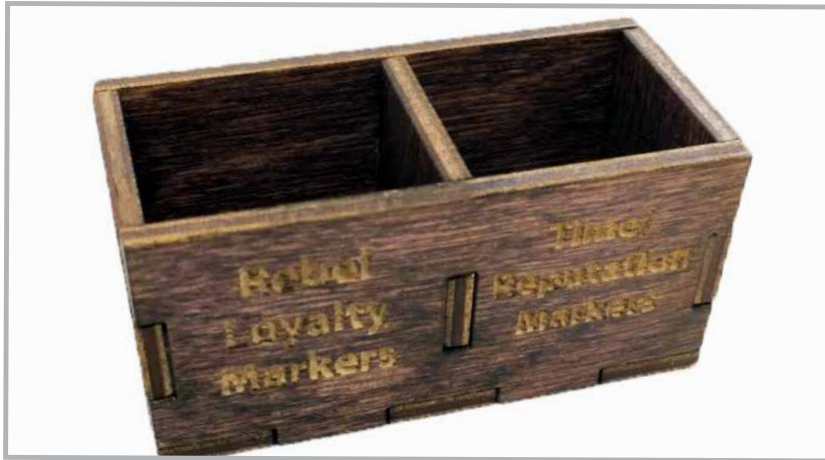


This Quick Start Insert is compatible with STAR WARS REBELLION and its expansions. This is a non-licensed product. ALL RIGHTS RESERVED by their respective trademark holders. No challenge to any intellectual property rights is intended or implied by representations of compatibility and no endorsements of any of our products by any other company is implied or represented.

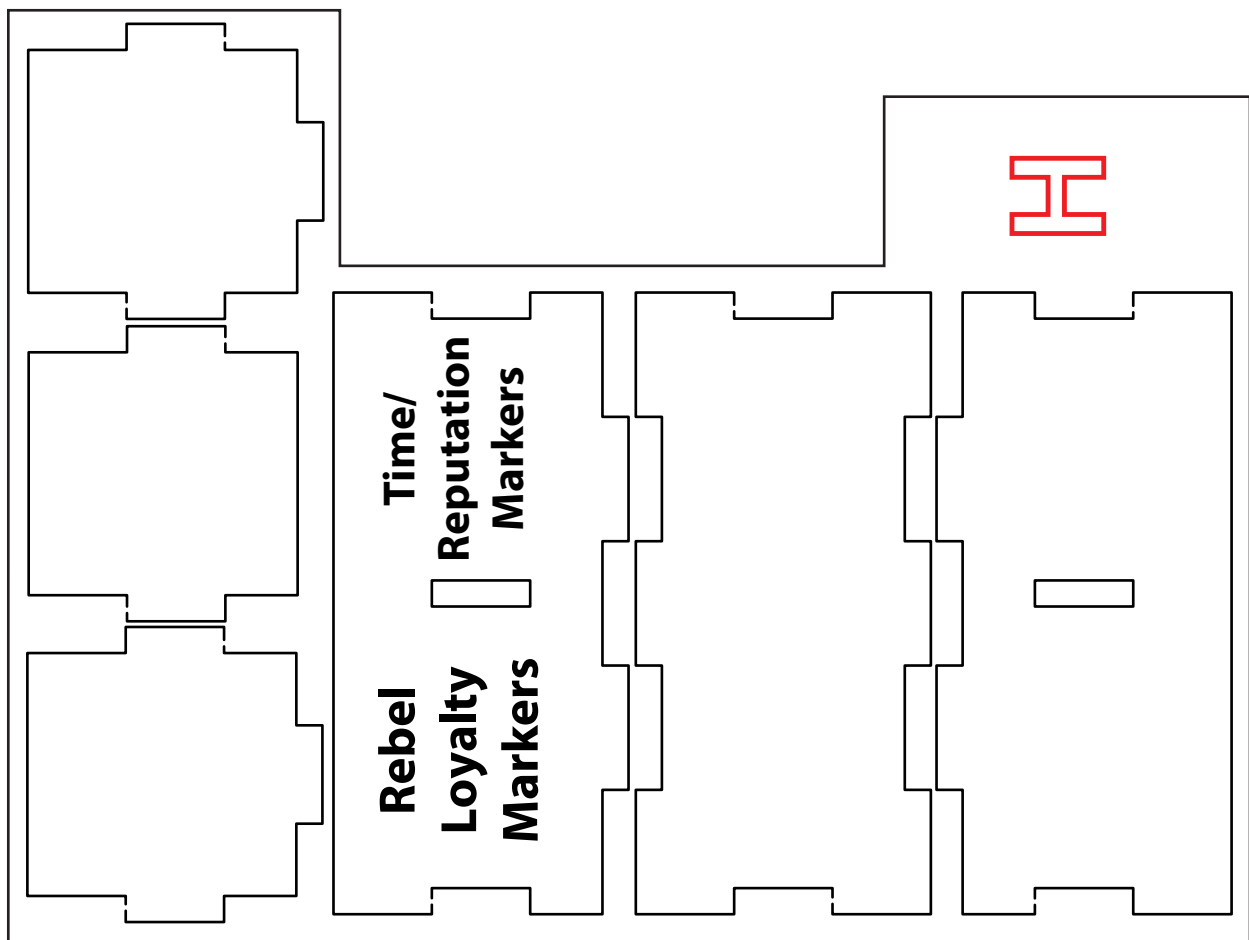


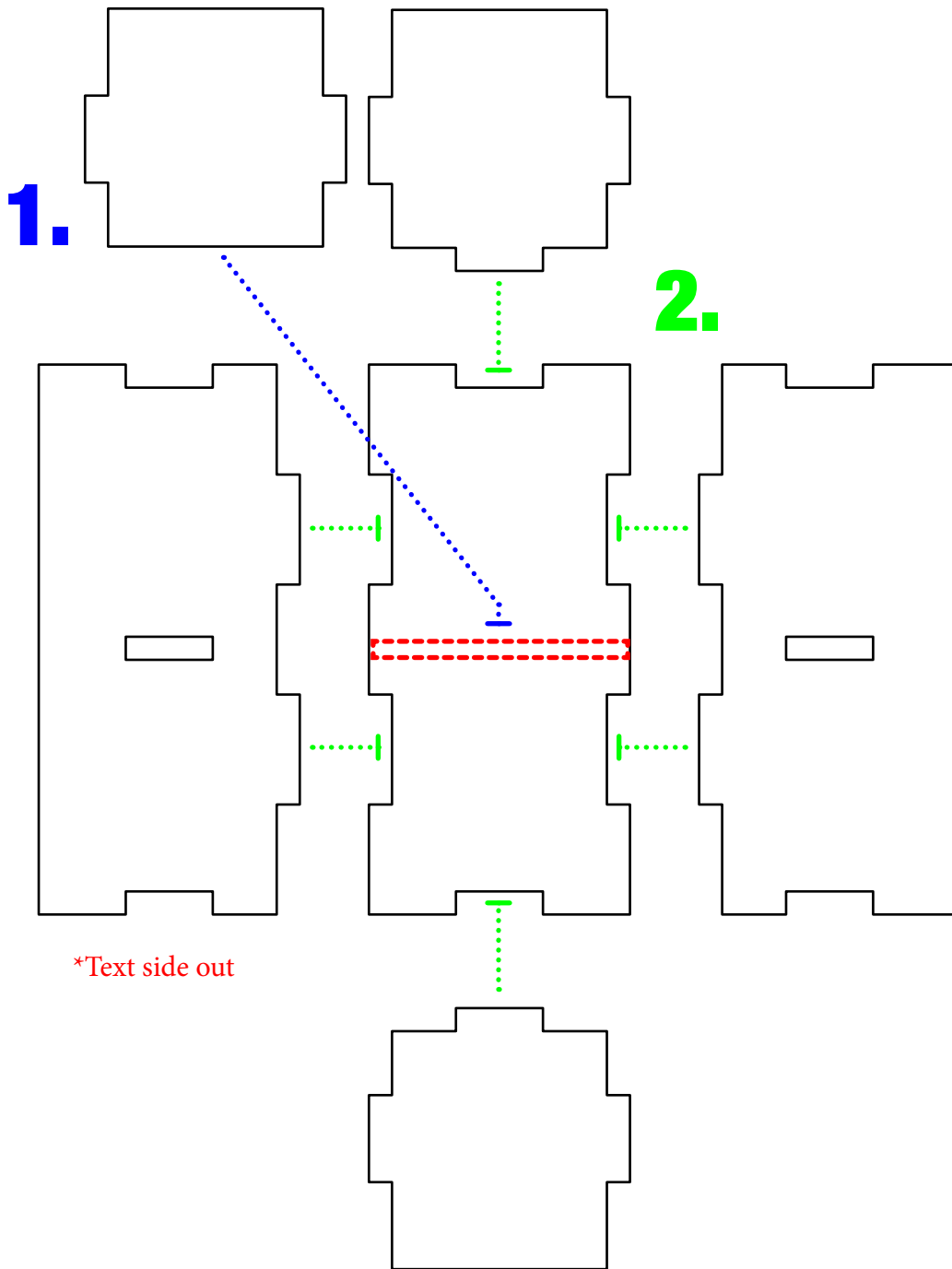
*Text side out





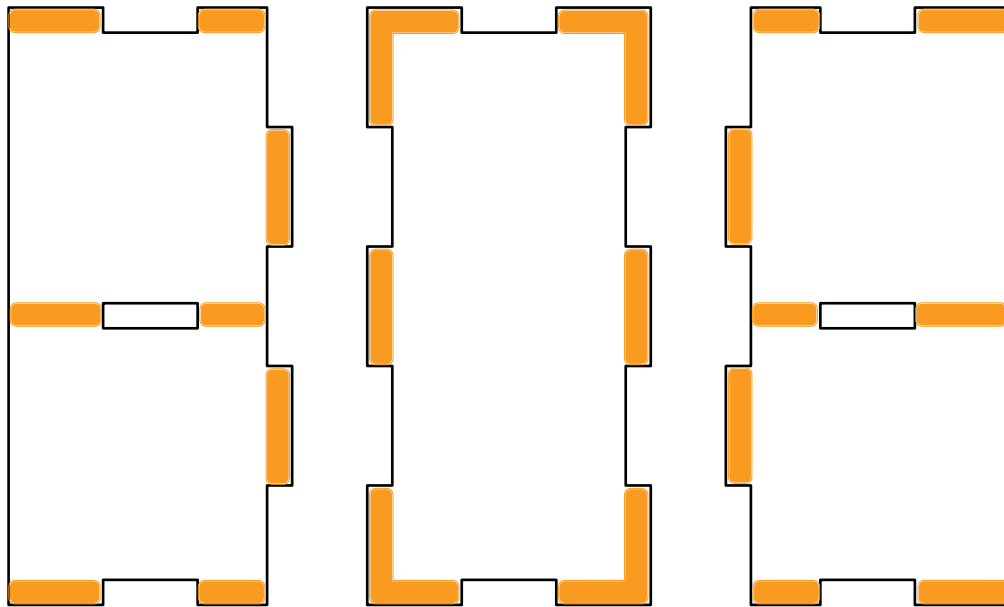
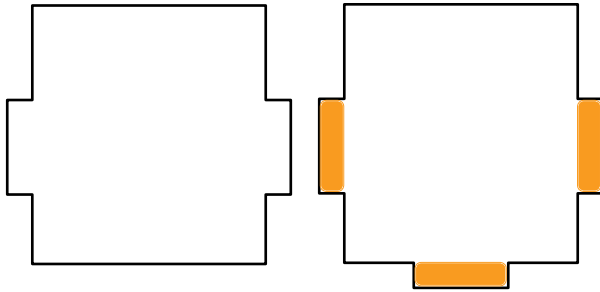
Sheet H1:



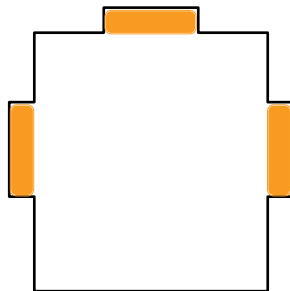




QUICK » START INSERT™ FOR
STAR WARS REBELLION®



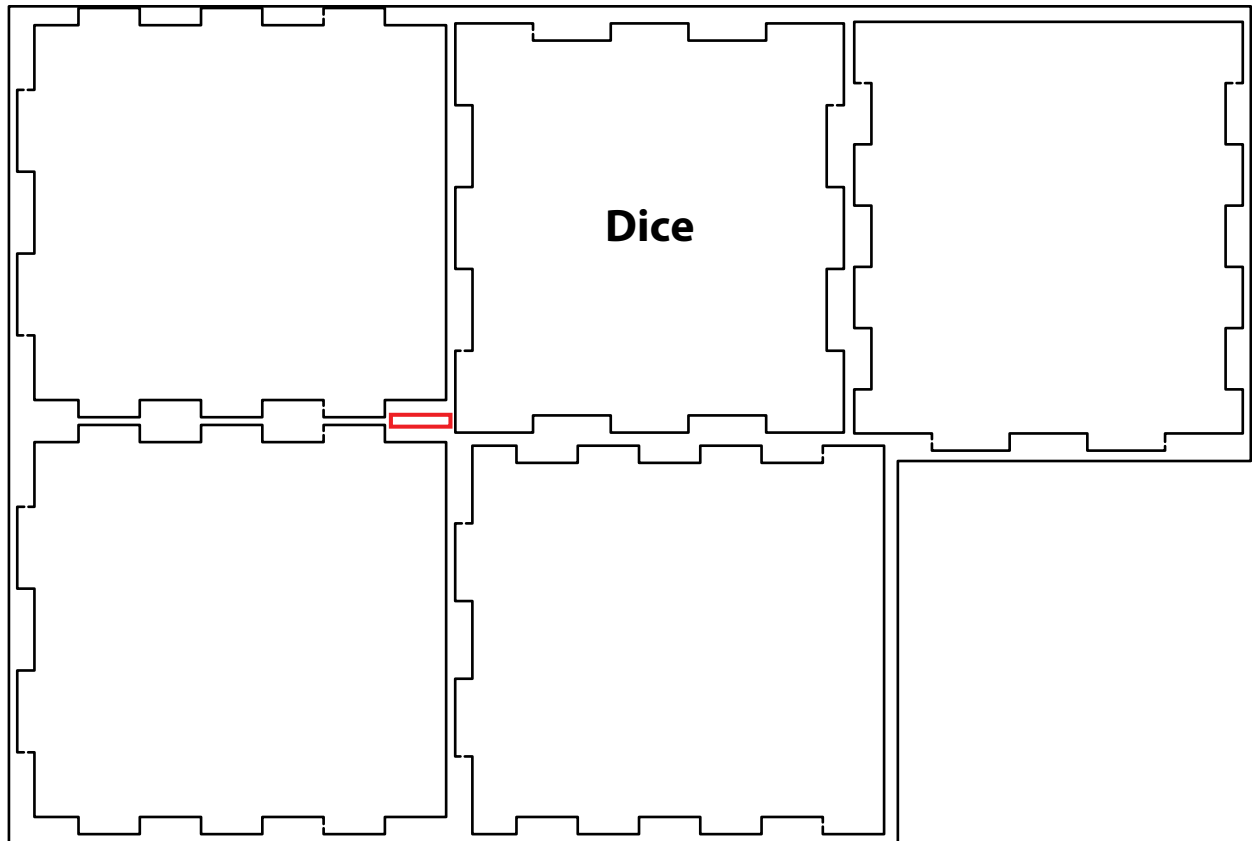
*Text side out

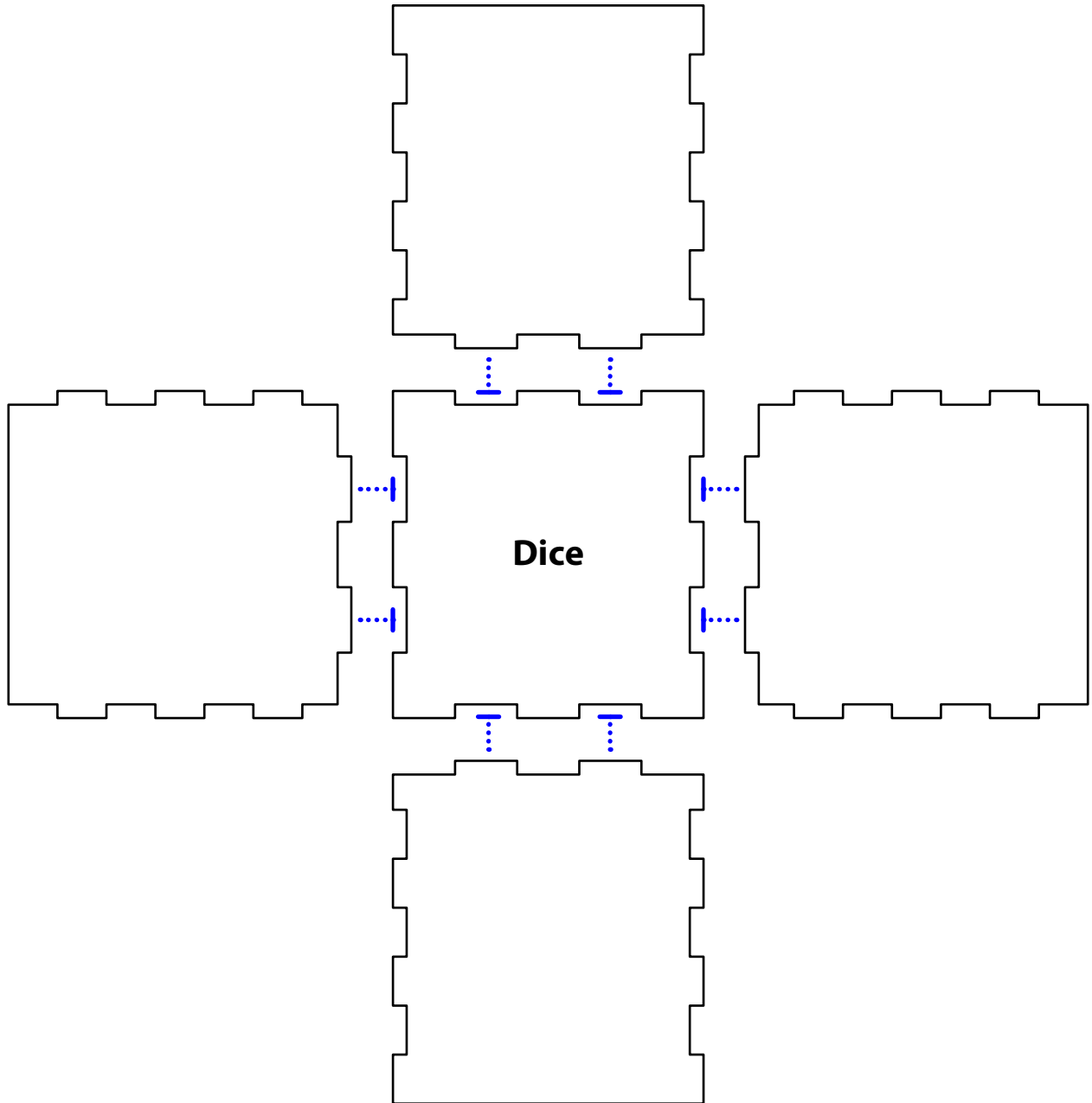


This Quick Start Insert is compatible with STAR WARS REBELLION and its expansions. This is a non-licensed product. ALL RIGHTS RESERVED by their respective trademark holders. No challenge to any intellectual property rights is intended or implied by representations of compatibility and no endorsements of any of our products by any other company is implied or represented.



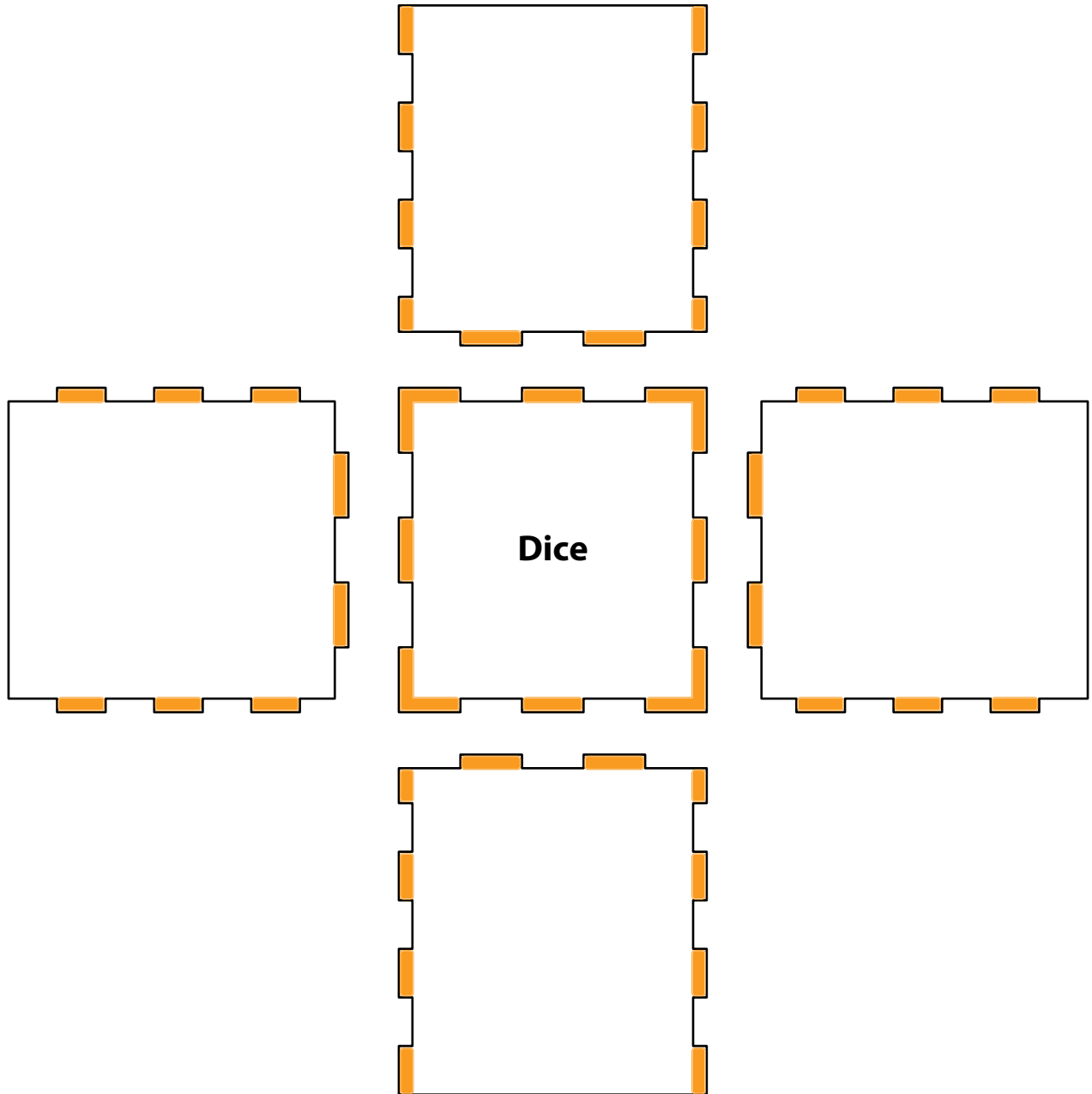
Sheet I1:







QUICK » START INSERT™ FOR
STAR WARS REBELLION®



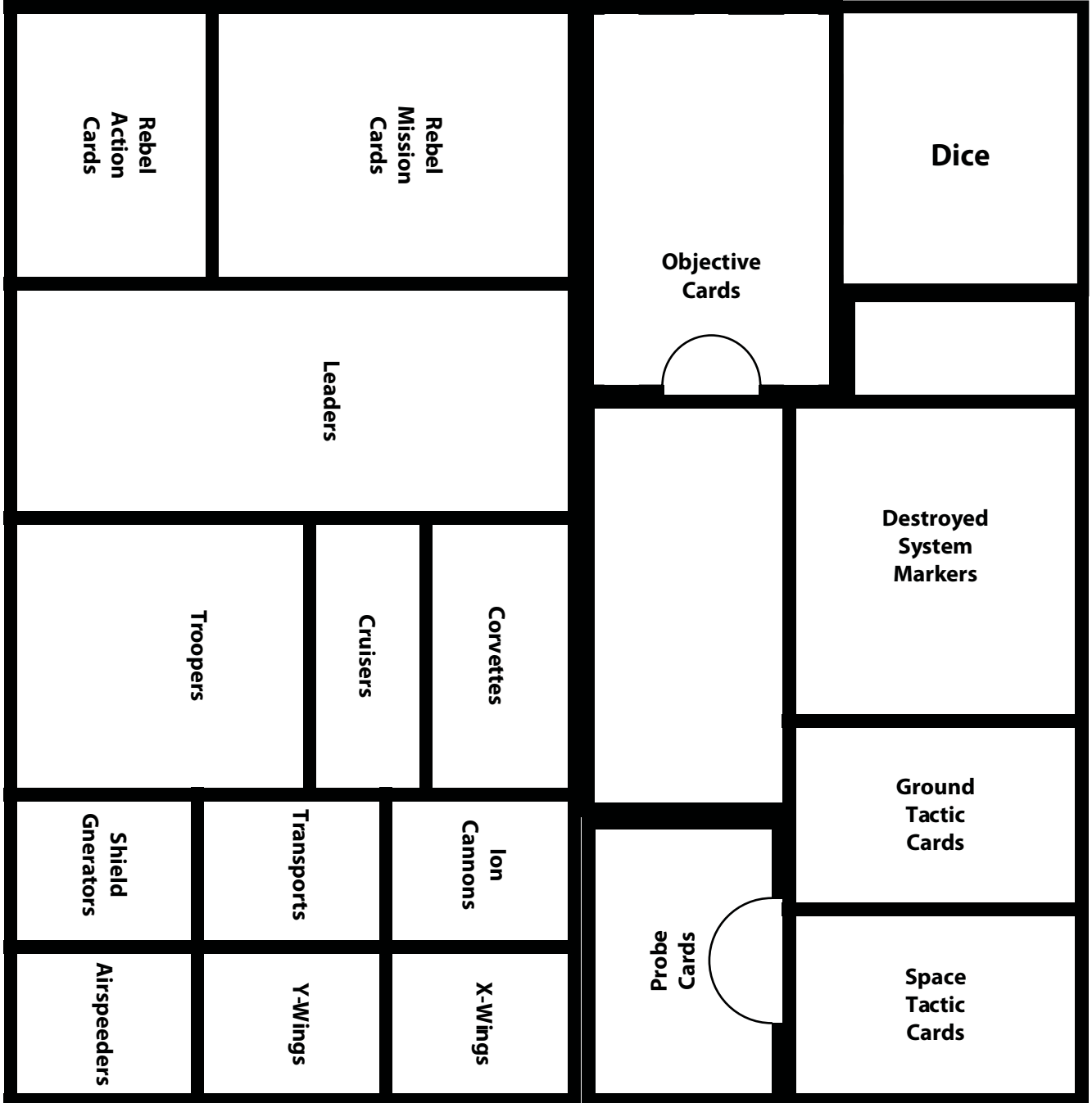
This Quick Start Insert is compatible with STAR WARS REBELLION and its expansions. This is a non-licensed product. ALL RIGHTS RESERVED by their respective trademark holders. No challenge to any intellectual property rights is intended or implied by representations of compatibility and no endorsements of any of our products by any other company is implied or represented.

Layout in Box





Bottom Layer





Top Layer

