

ASSEMBLY INSTRUCTIONS FOR



less work, more game



CASTLES OF MAD KING LUDWIG®

QUICK  START INSERT™

CASTLES OF MAD KING LUDWIG® is a registered trademark of 2015 Bezier Games. Any mention of CASTLES OF MAD KING LUDWIG® is for reference purposes only. ALL RIGHTS RESERVED by their respective trademark holders. No challenge to any intellectual property rights is intended or implied by representations of compatibility and no endorsements of any of our products by any other company is implied or represented.



QUICK»START INSERT™ FOR CASTLES OF MAD KING LUDWIG®

General Assembly Instructions

The following are basic instructions for any of the Quick Start Inserts:

- All panels are labeled with an Alphabet letter (A, B, C, etc.). First sort all panels into piles by their letters before you begin to assemble.
- Layout the parts in the diagrams provided, to ensure you have all the parts
- Glue only the edges that come into contact with the wood (remove excess immediately)
- Allow 24 hours to dry before using

Tips & Tricks

- Some of the parts might need to be slightly sanded on the edges for a perfect fit.
- Sometimes tapping the pieces with a small amount of force (with a mallet) helps create a tighter fit.
- Taping the outside corners of the boxes helps it hold in place while the glue is drying.
- If you break a part, don't hesitate calling we always carry spares – you just need to cover shipping. (most spares can be send in an envelope, if so we don't charge for shipping)

Assembly Supplies



Beacon 527 or wood-glue
(We recommend Beacon)



Painters blue tape
(Painter's tape helps protect the finish)



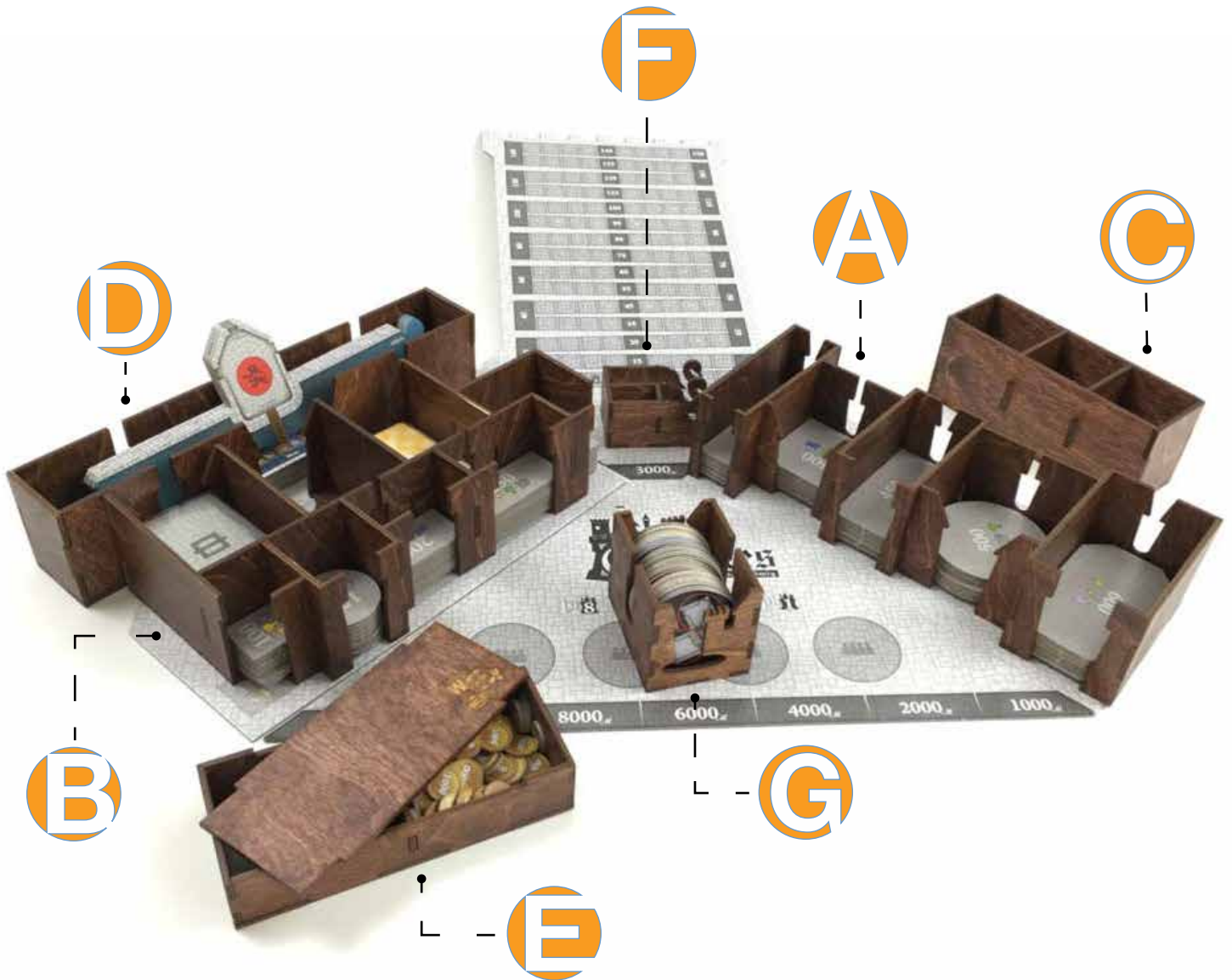
Rubber mallet
(or something to tap the pieces together, only when needed)



Cotton swap/ Q-tip
(or something to wipe the excess glue)



QUICK START INSERT™ FOR CASTLES OF MAD KING LUDWIG®



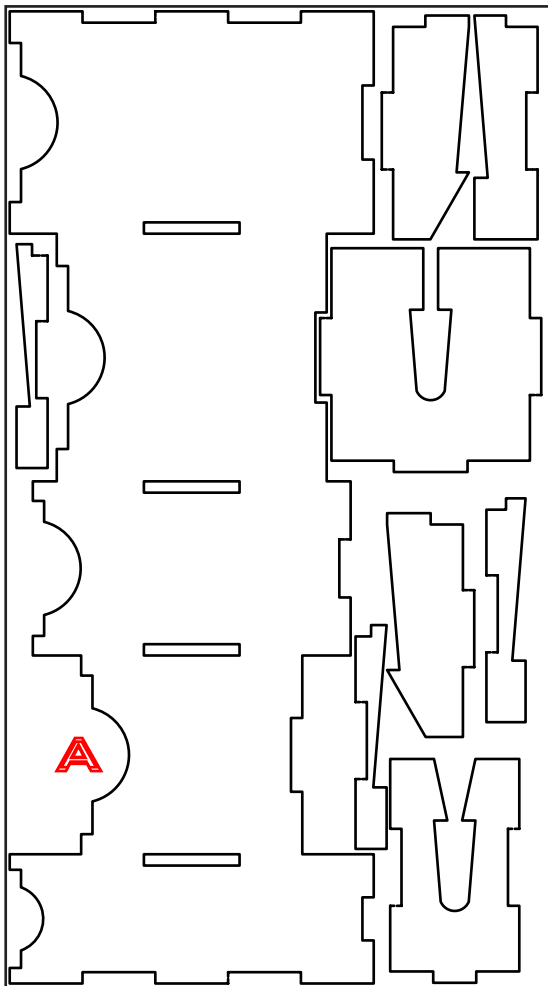
This Quick Start Insert is compatible with CASTLES OF MAD KING LUDWIG® and its expansions. This is a non-licensed product. ALL RIGHTS RESERVED by their respective trademark holders. No challenge to any intellectual property rights is intended or implied by representations of compatibility and no endorsements of any of our products by any other company is implied or represented.



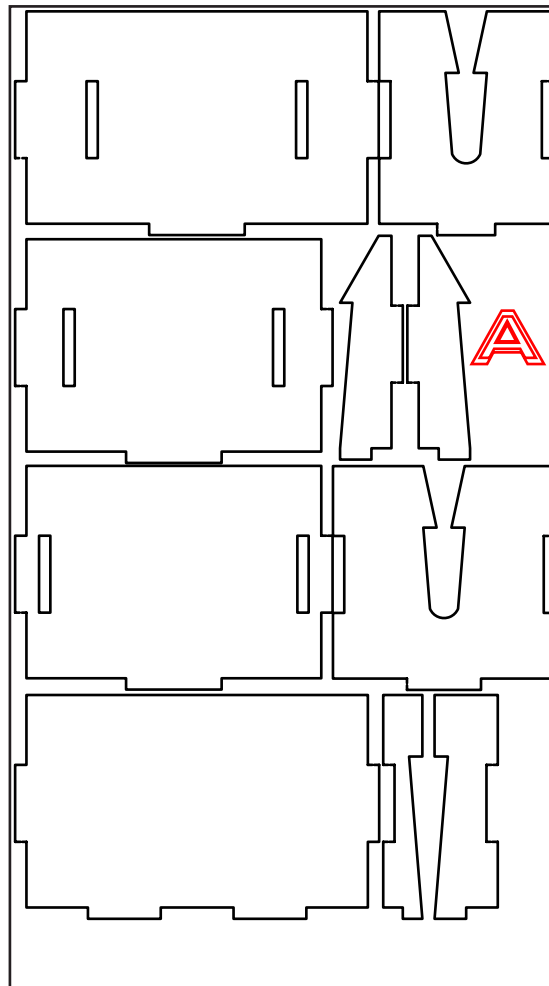
QUICK » START INSERT™ FOR
CASTLES OF MAD KING LUDWIG®



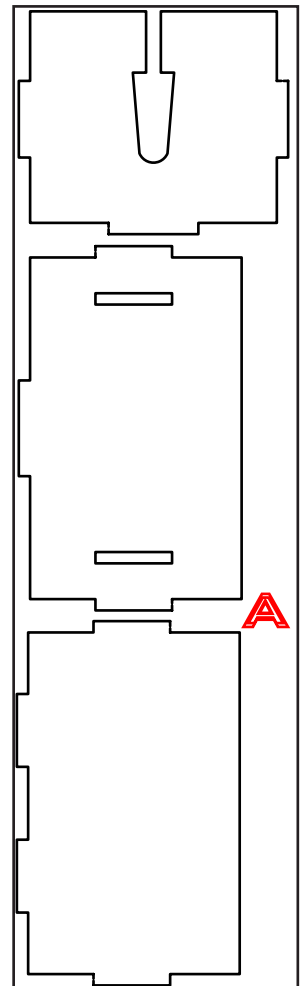
Sheet A1:



Sheet A2:



Sheet A3:

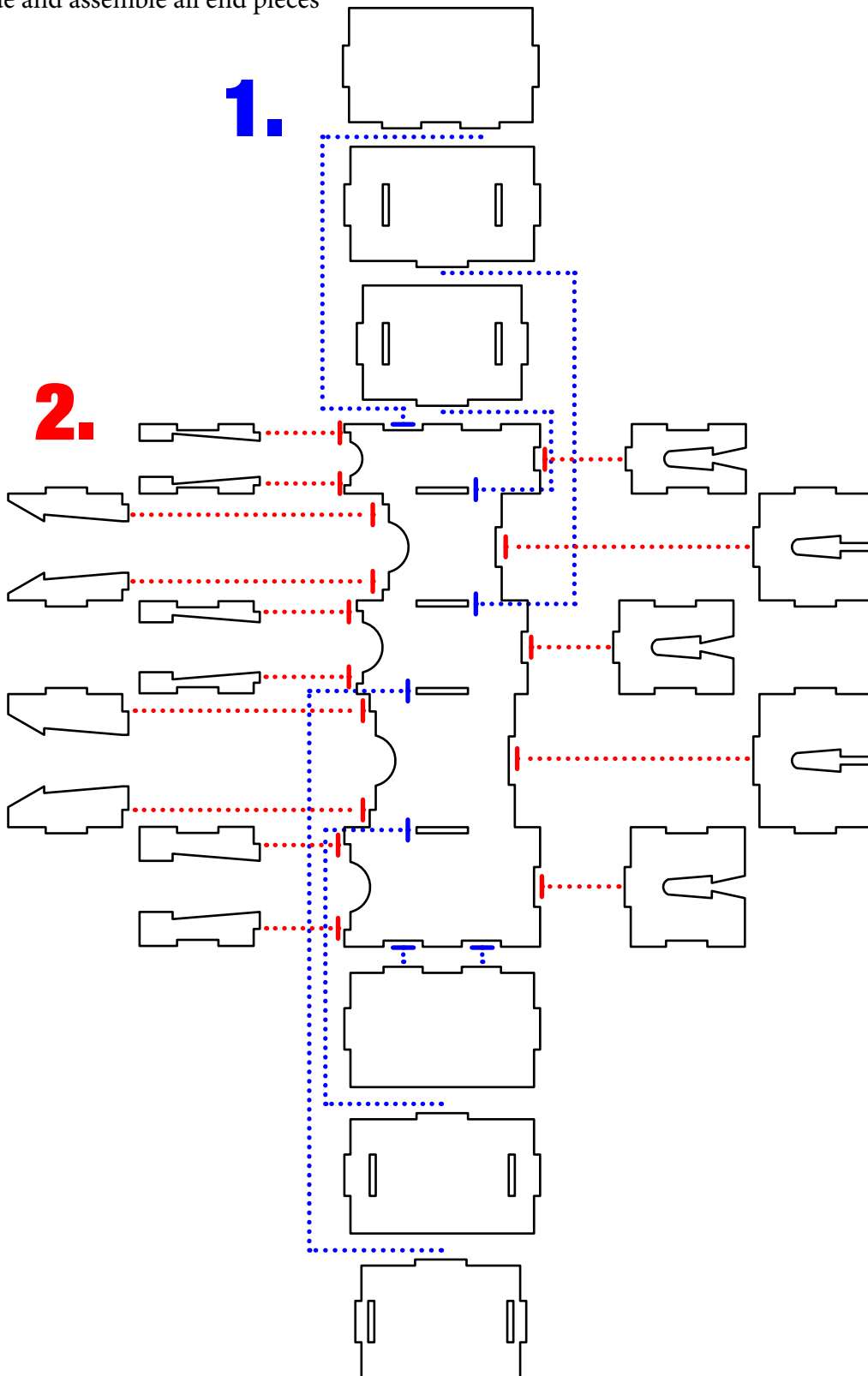


This Quick Start Insert is compatible with CASTLES OF MAD KING LUDWIG® and its expansions. This is a non-licensed product. ALL RIGHTS RESERVED by their respective trademark holders. No challenge to any intellectual property rights is intended or implied by representations of compatibility and no endorsements of any of our products by any other company is implied or represented.



Recommended Assembly Sequence

1. Glue and assemble all center pieces to base plate
2. Glue and assemble all end pieces

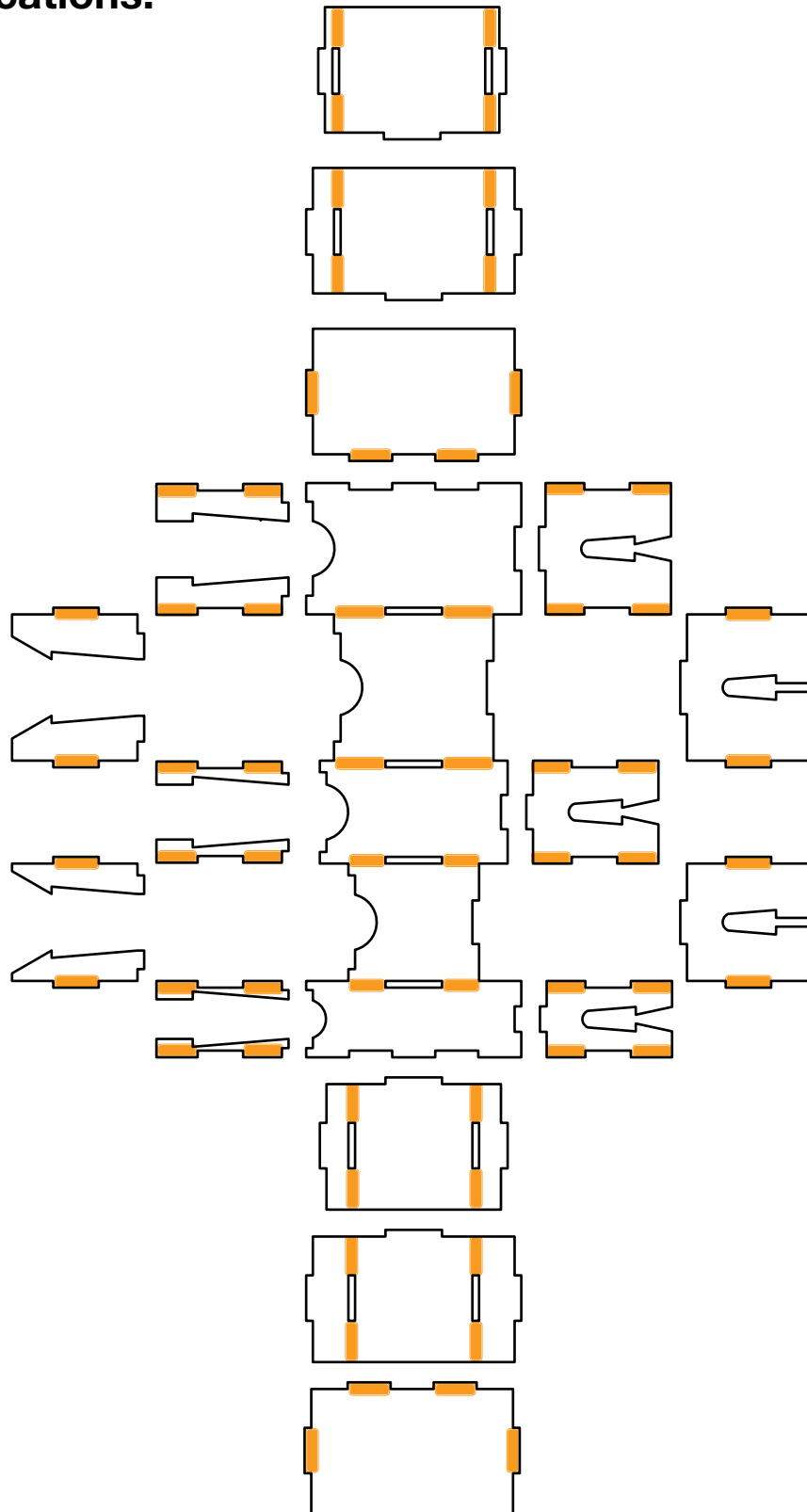




QUICK » START INSERT™ FOR
CASTLES OF MAD KING LUDWIG®



Glue Locations:



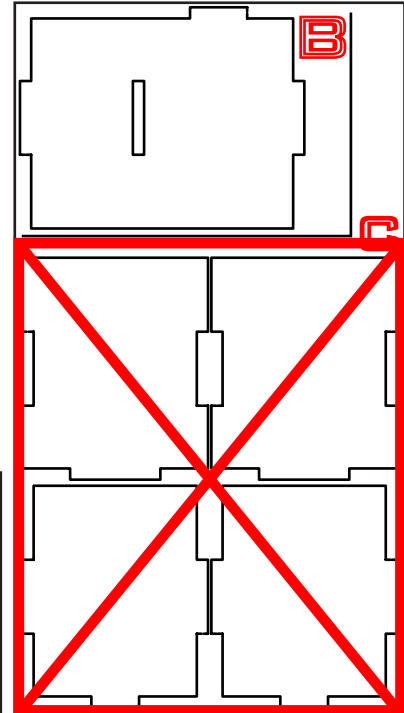
This Quick Start Insert is compatible with CASTLES OF MAD KING LUDWIG® and its expansions. This is a non-licensed product. ALL RIGHTS RESERVED by their respective trademark holders. No challenge to any intellectual property rights is intended or implied by representations of compatibility and no endorsements of any of our products by any other company is implied or represented.



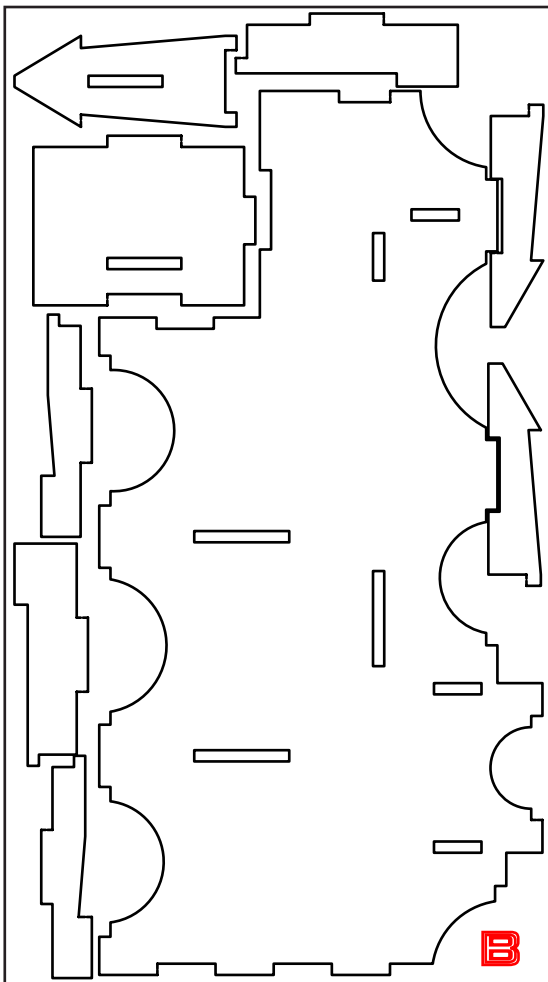
QUICK » START INSERT™ FOR
CASTLES OF MAD KING LUDWIG®



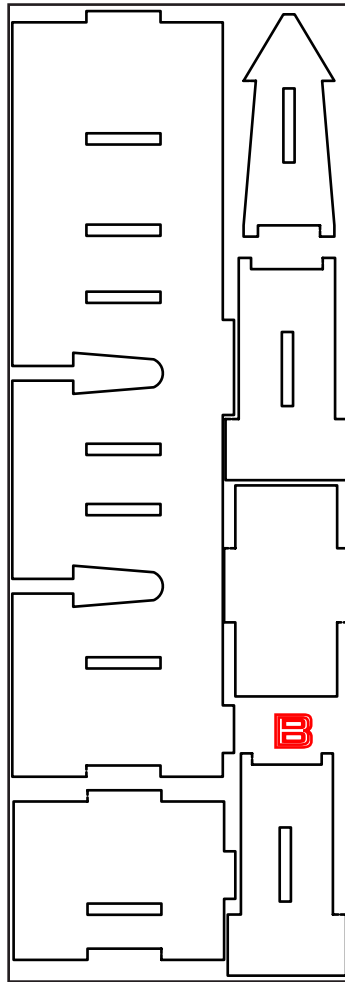
Sheet B3:



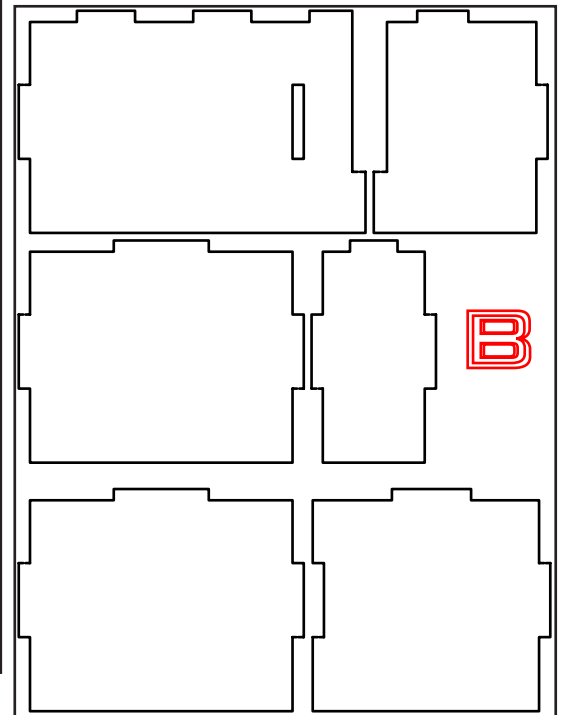
Sheet B1:



Sheet B2:



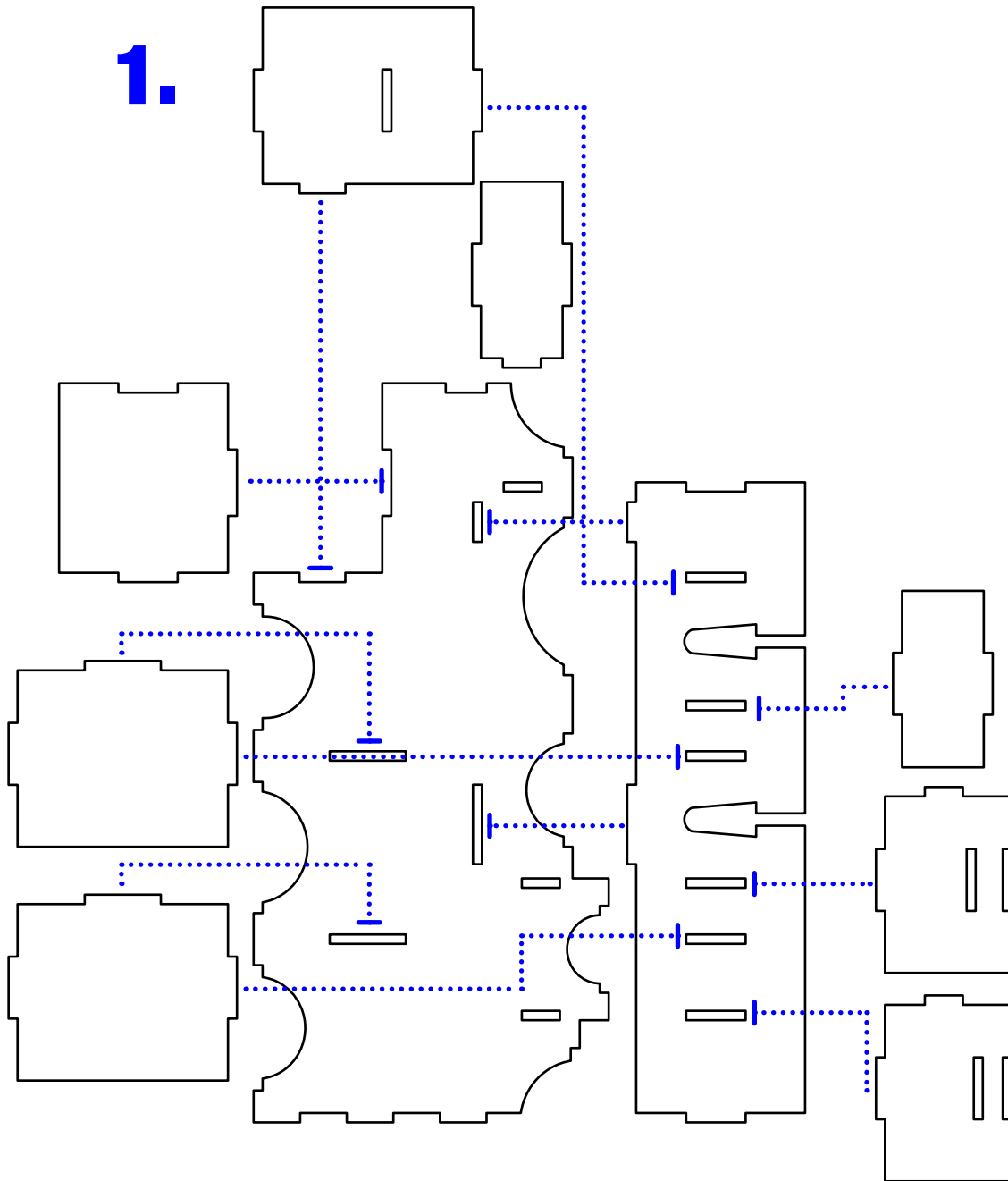
Sheet B4:



This Quick Start Insert is compatible with CASTLES OF MAD KING LUDWIG® and its expansions. This is a non-licensed product. ALL RIGHTS RESERVED by their respective trademark holders. No challenge to any intellectual property rights is intended or implied by representations of compatibility and no endorsements of any of our products by any other company is implied or represented.

Section B Assembly Step #1:

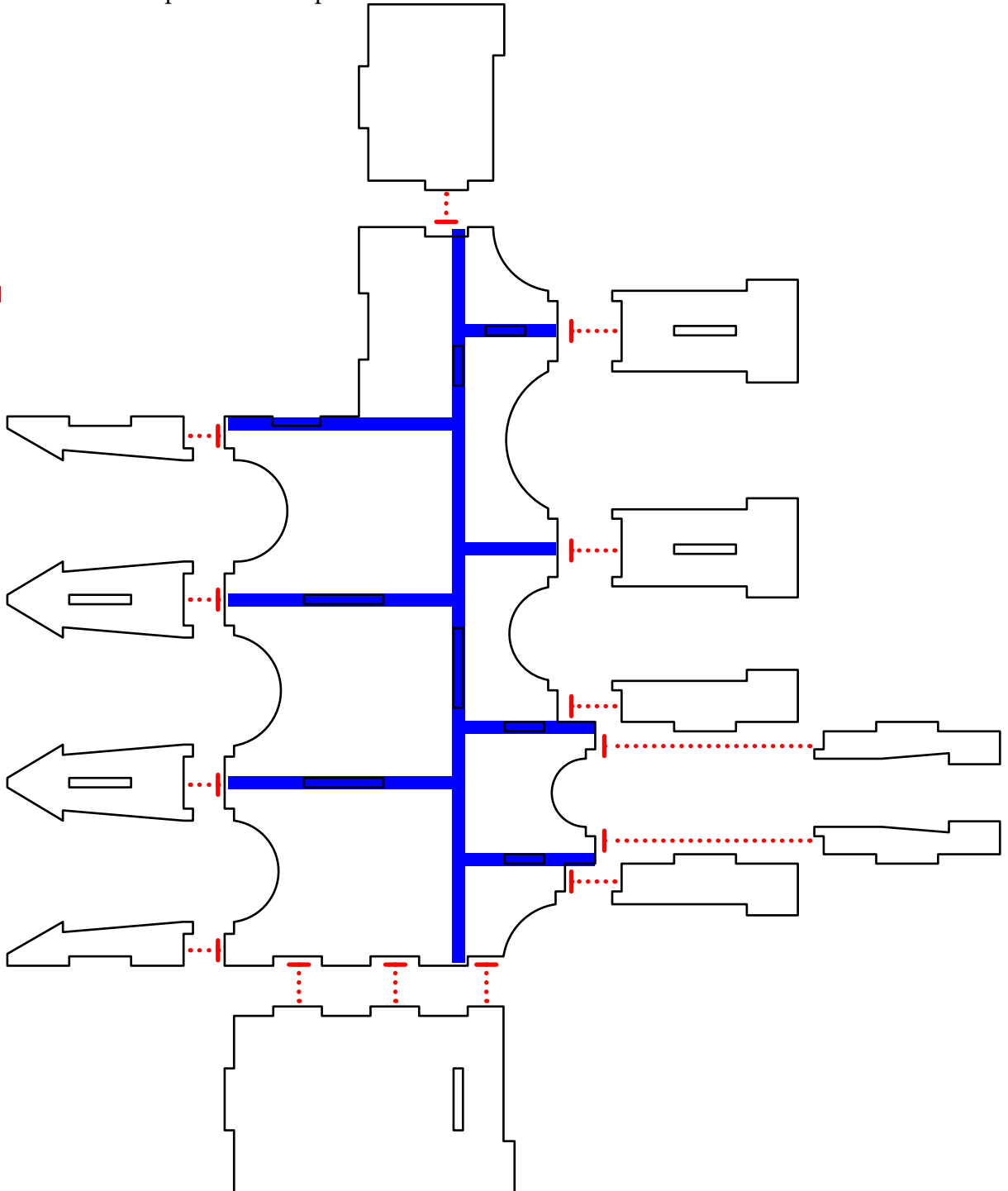
1. Glue and assemble center dividers to base plate




Section B Assembly Step #2:

1. Glue and assemble end pieces to base plate

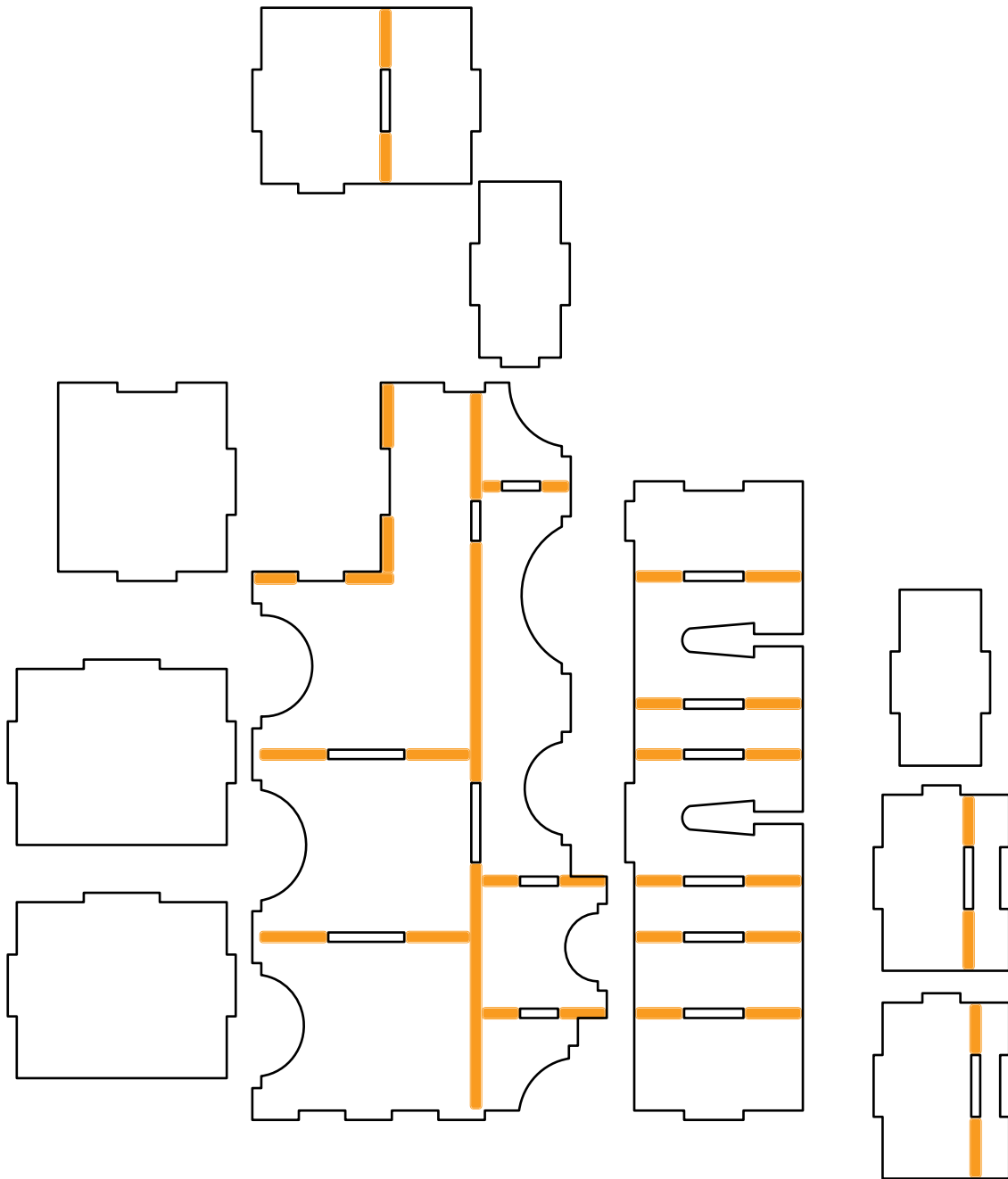
2.



 = Previously assembled pieces

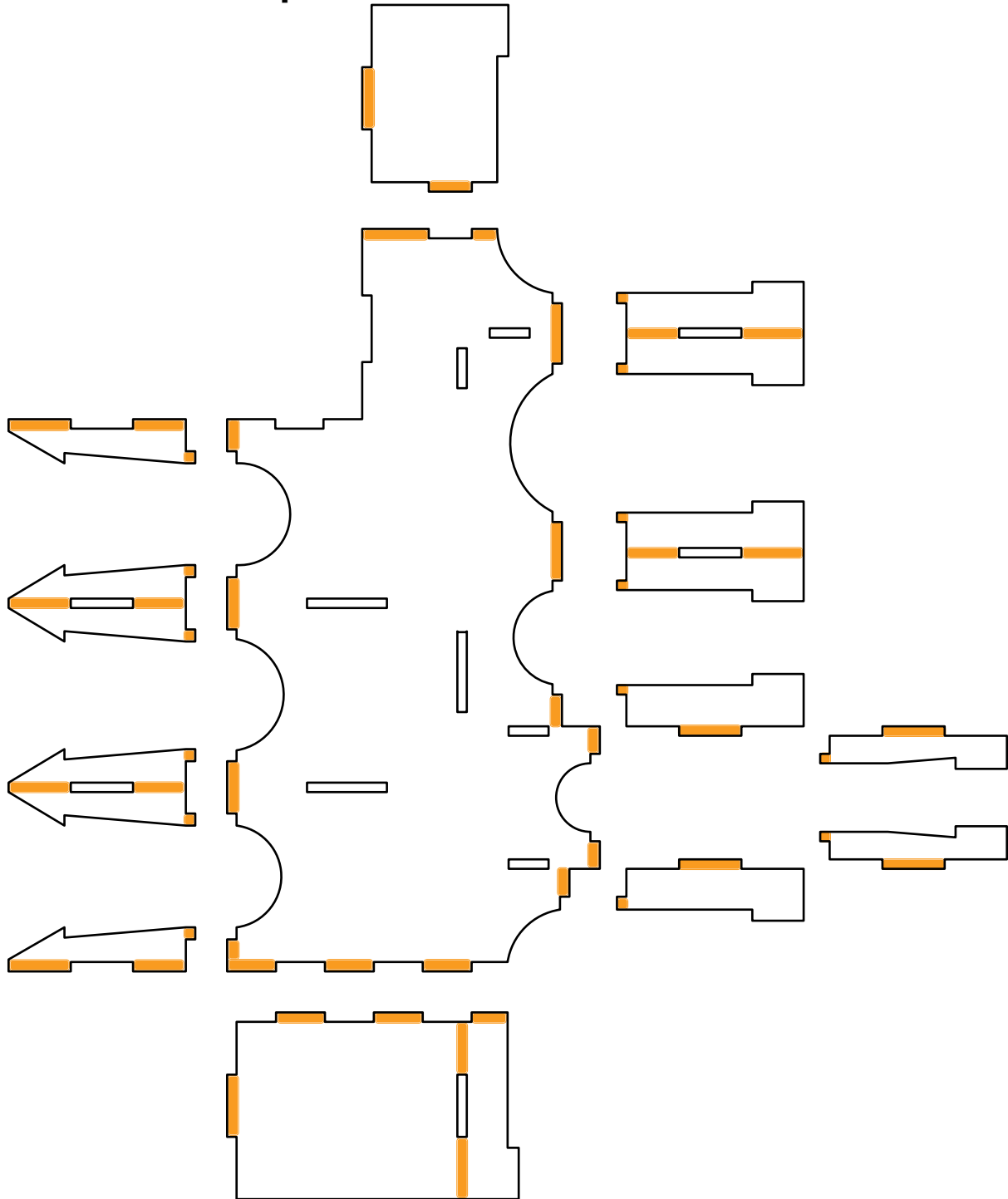


Glue Locations Step 1:





Glue Locations Step 2:



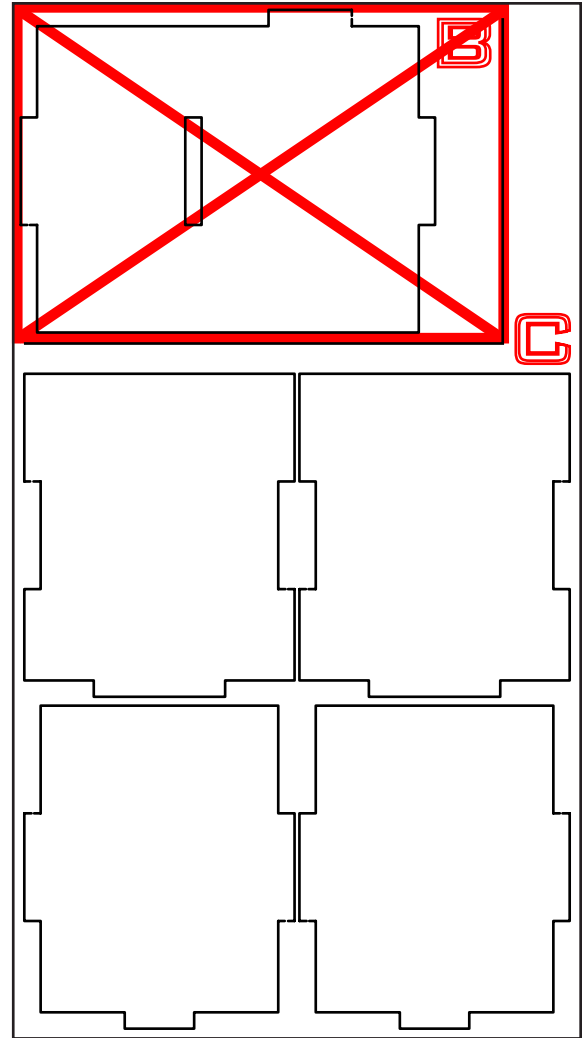
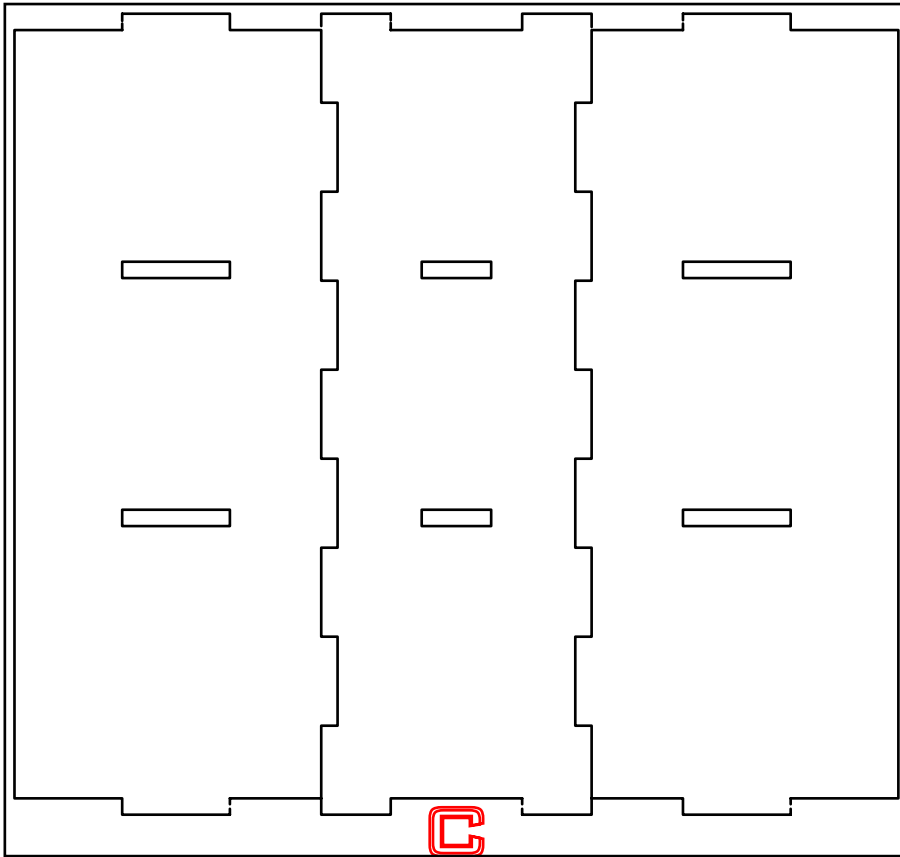


QUICK » START INSERT™ FOR
CASTLES OF MAD KING LUDWIG®



Sheet C2:

Sheet C1:



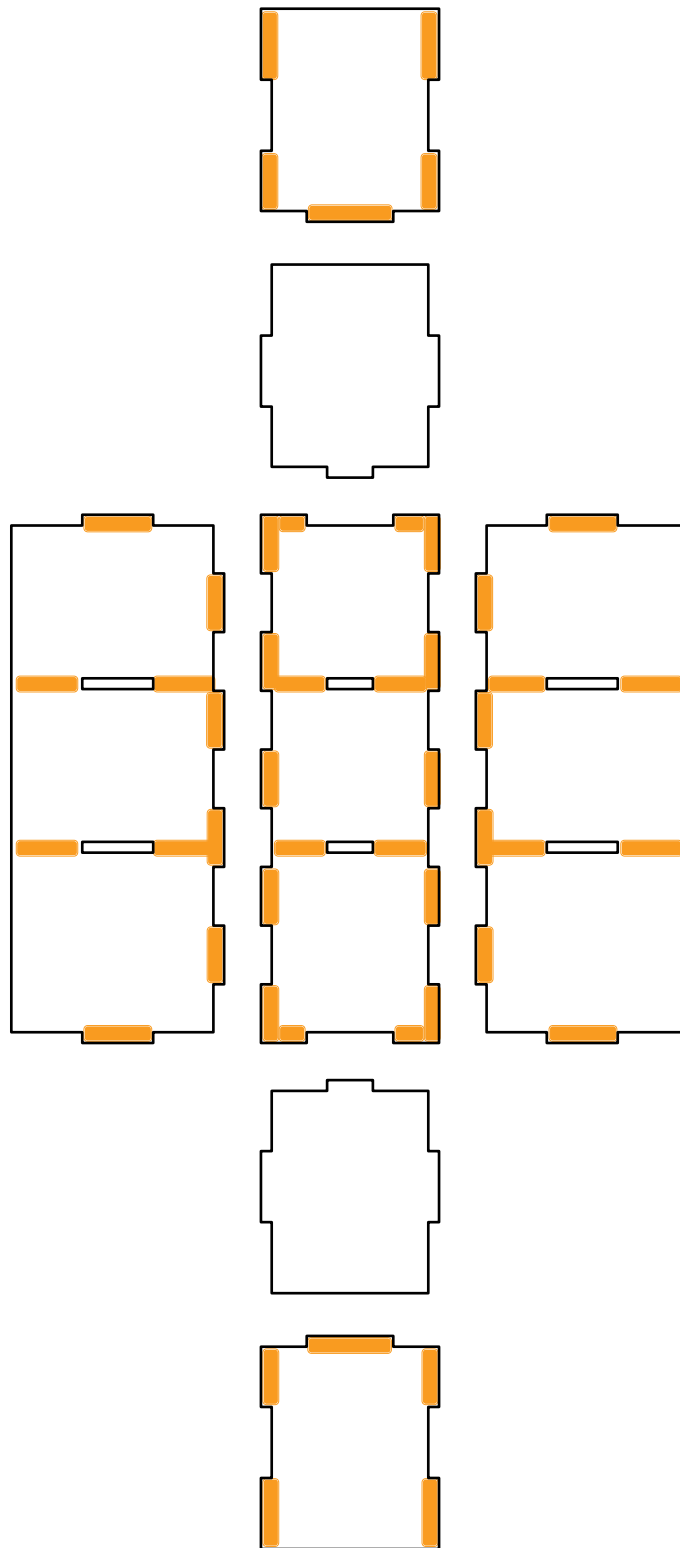
This Quick Start Insert is compatible with CASTLES OF MAD KING LUDWIG® and its expansions. This is a non-licensed product. ALL RIGHTS RESERVED by their respective trademark holders. No challenge to any intellectual property rights is intended or implied by representations of compatibility and no endorsements of any of our products by any other company is implied or represented.



QUICK » START INSERT™ FOR
CASTLES OF MAD KING LUDWIG®



Glue Locations:



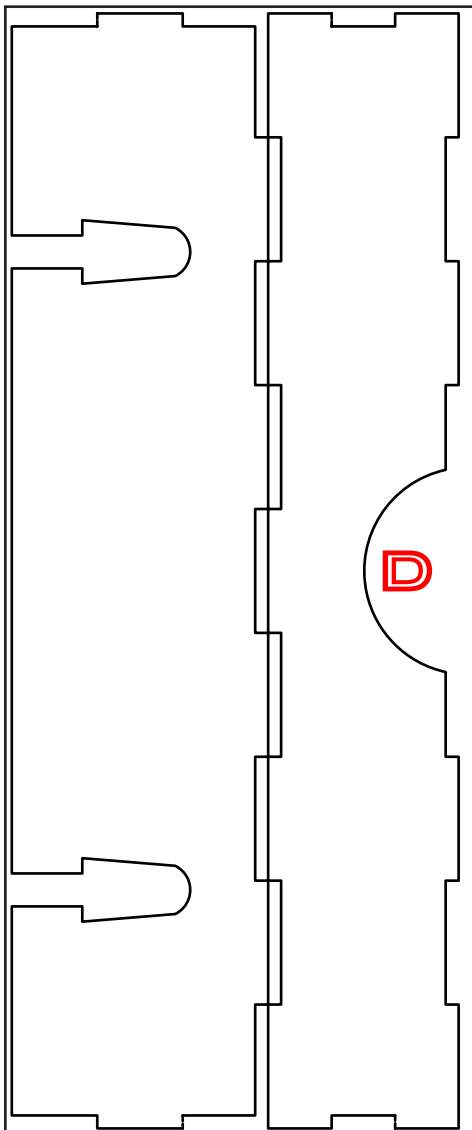
This Quick Start Insert is compatible with CASTLES OF MAD KING LUDWIG® and its expansions. This is a non-licensed product. ALL RIGHTS RESERVED by their respective trademark holders. No challenge to any intellectual property rights is intended or implied by representations of compatibility and no endorsements of any of our products by any other company is implied or represented.



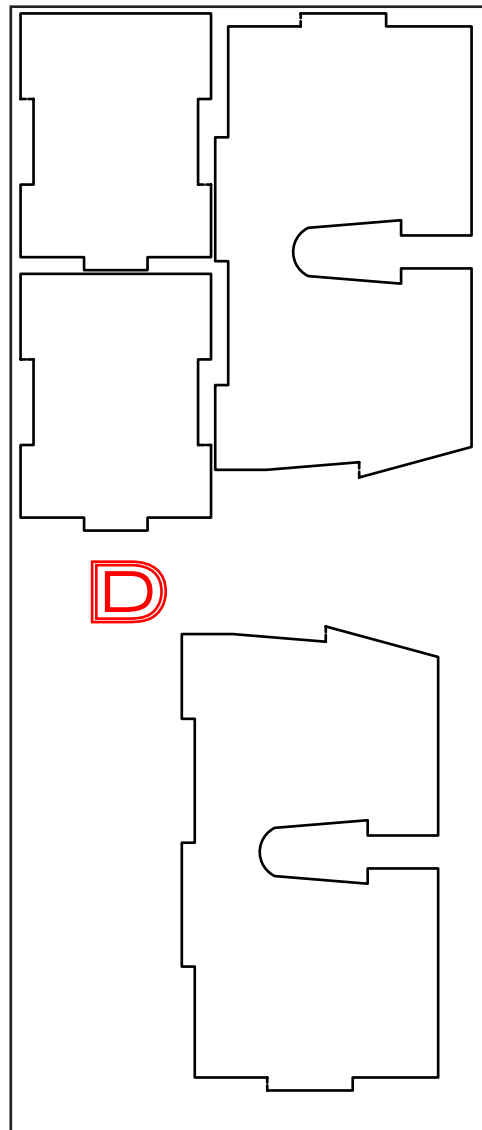
QUICK » START INSERT™ FOR
CASTLES OF MAD KING LUDWIG®



Sheet D1:



Sheet D2:

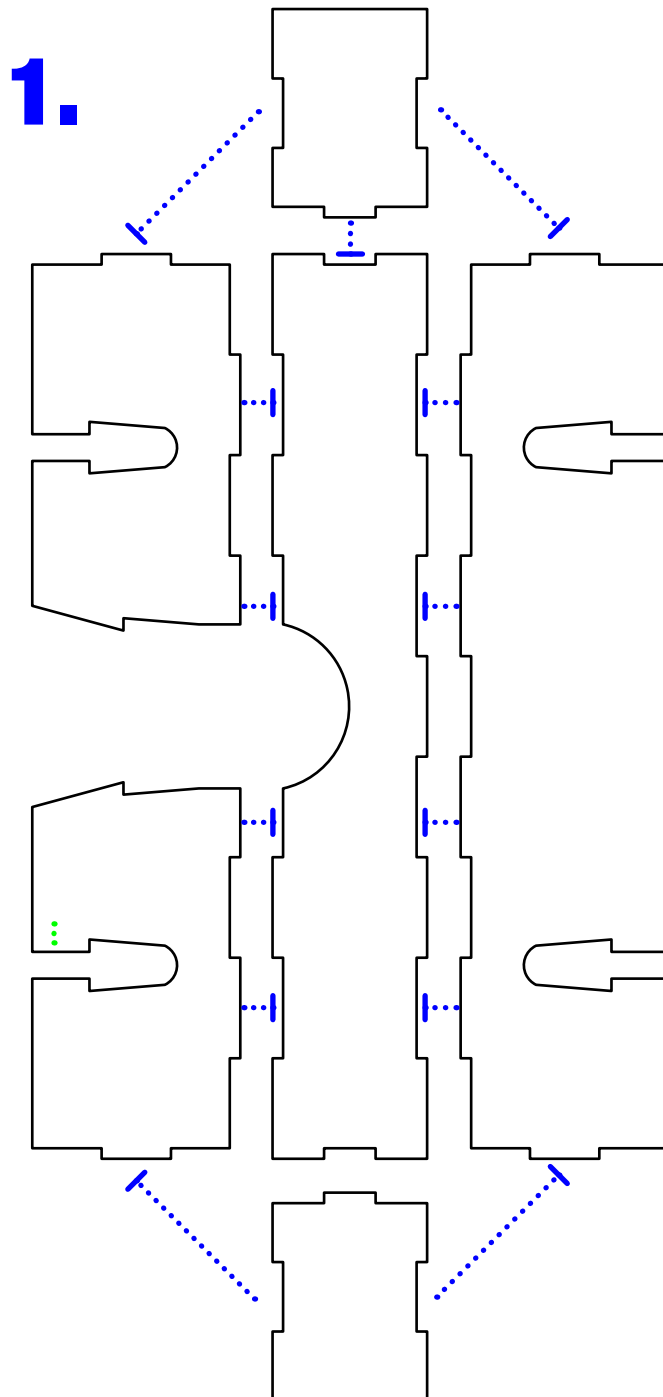


This Quick Start Insert is compatible with CASTLES OF MAD KING LUDWIG® and its expansions. This is a non-licensed product. ALL RIGHTS RESERVED by their respective trademark holders. No challenge to any intellectual property rights is intended or implied by representations of compatibility and no endorsements of any of our products by any other company is implied or represented.



Section D Assembly Step #1:

1. Glue and assemble all side pieces

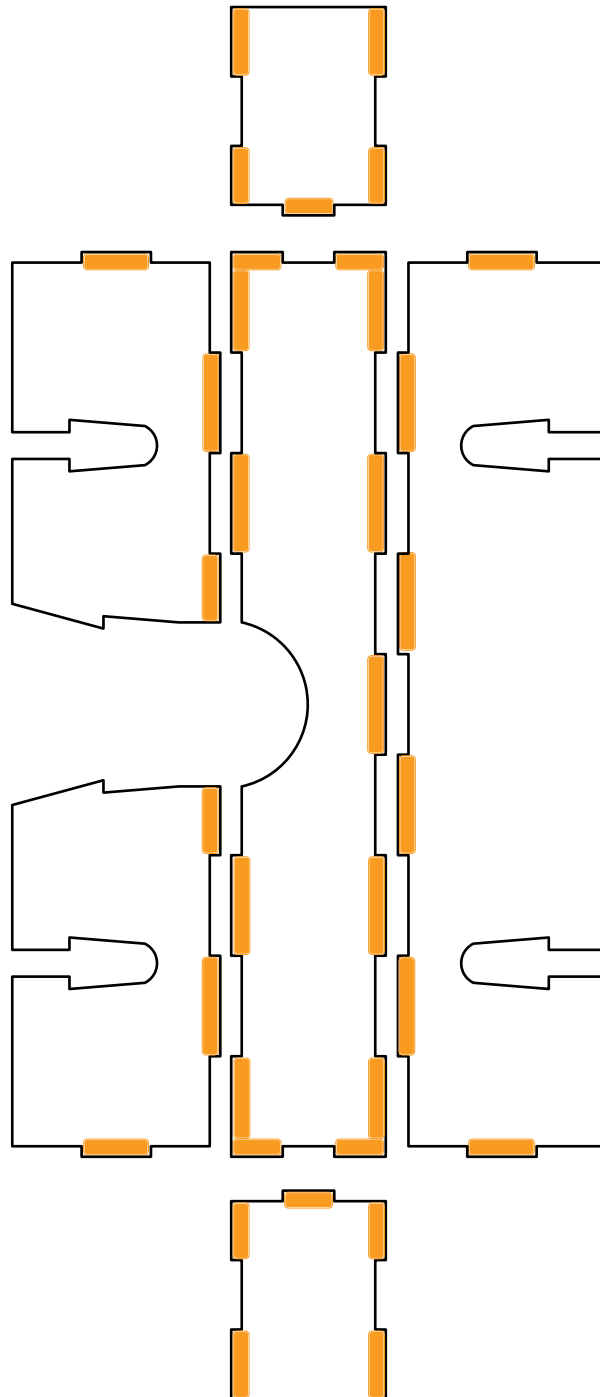




QUICK » START INSERT™ FOR
CASTLES OF MAD KING LUDWIG®



Glue Locations:



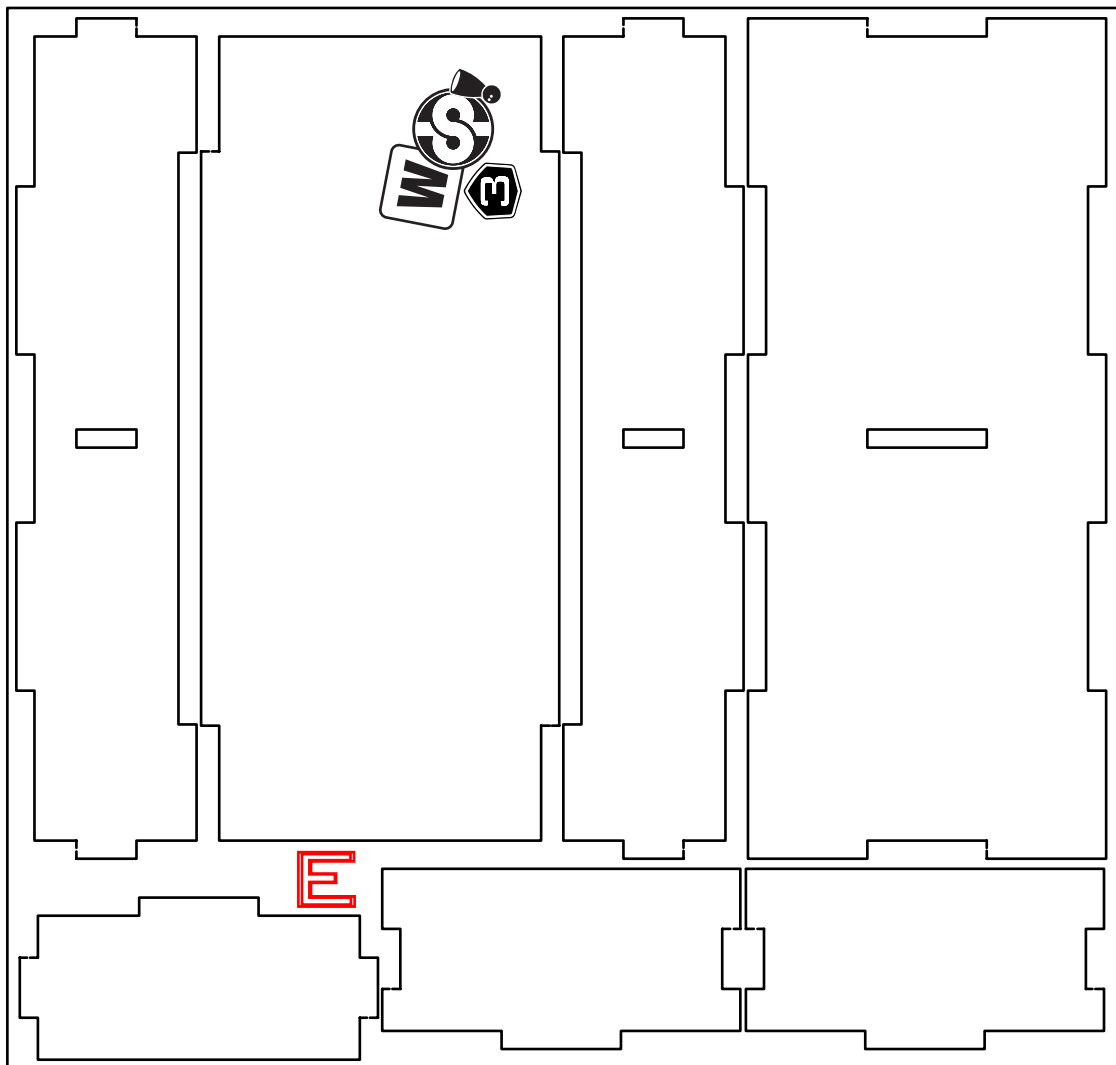
This Quick Start Insert is compatible with CASTLES OF MAD KING LUDWIG® and its expansions. This is a non-licensed product. ALL RIGHTS RESERVED by their respective trademark holders. No challenge to any intellectual property rights is intended or implied by representations of compatibility and no endorsements of any of our products by any other company is implied or represented.



QUICK » START INSERT™ FOR
CASTLES OF MAD KING LUDWIG®



Sheet E1:

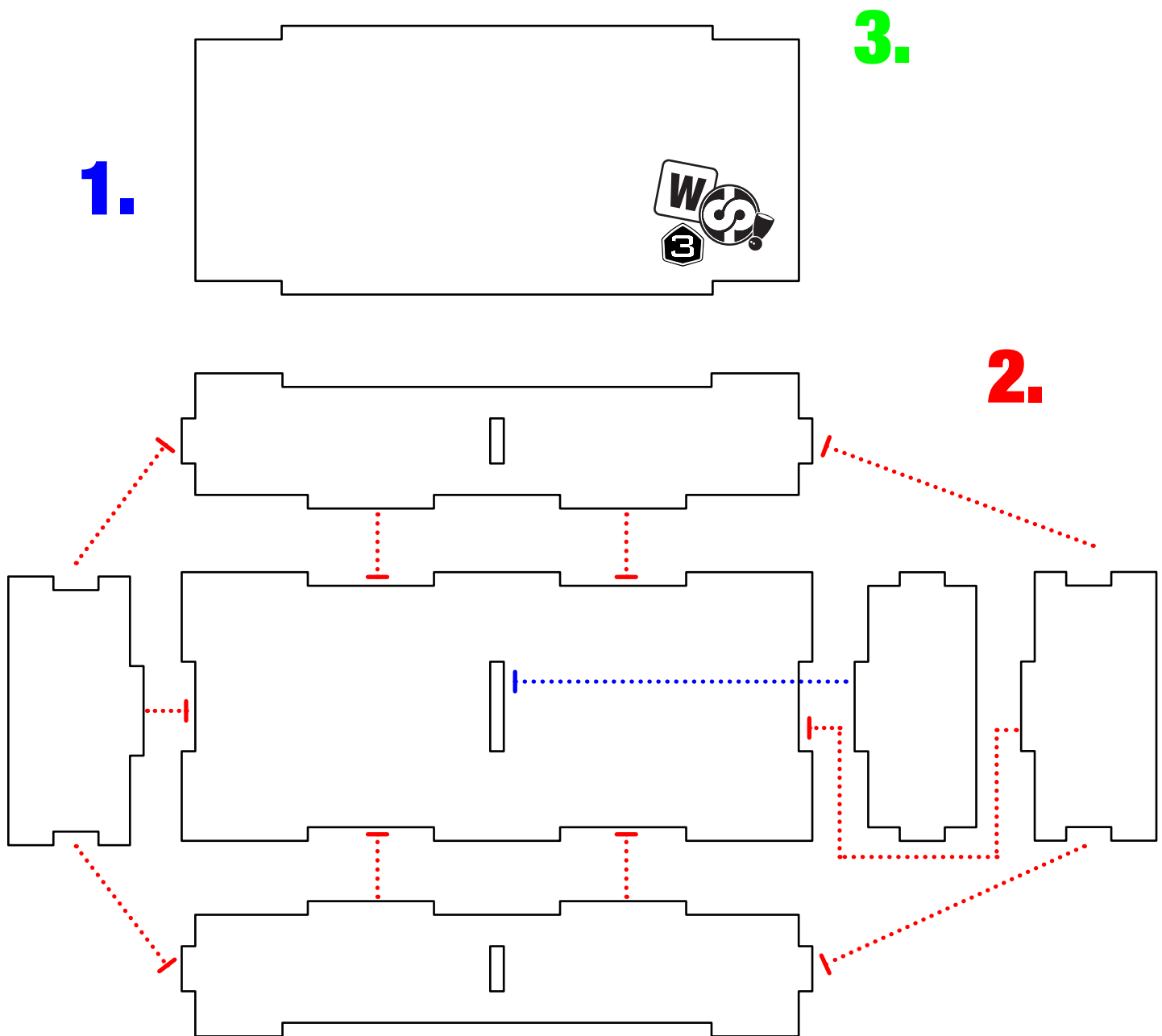


This Quick Start Insert is compatible with CASTLES OF MAD KING LUDWIG® and its expansions. This is a non-licensed product. ALL RIGHTS RESERVED by their respective trademark holders. No challenge to any intellectual property rights is intended or implied by representations of compatibility and no endorsements of any of our products by any other company is implied or represented.



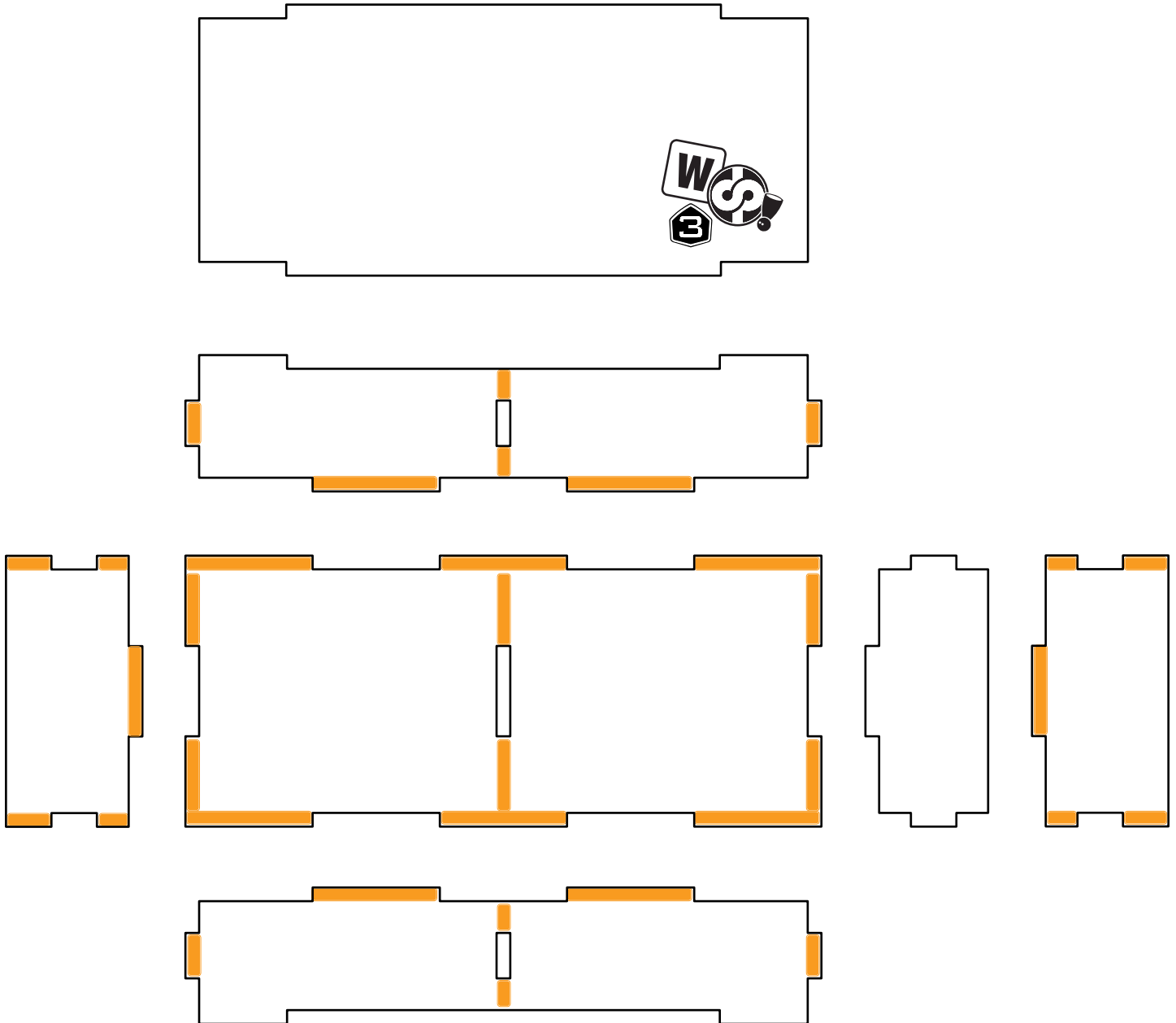
Section E Assembly Step:

1. Glue and assemble middle divider
2. Glue and assemble side pieces
3. Snap on lid (DO NOT GLUE LID)





Glue Locations:

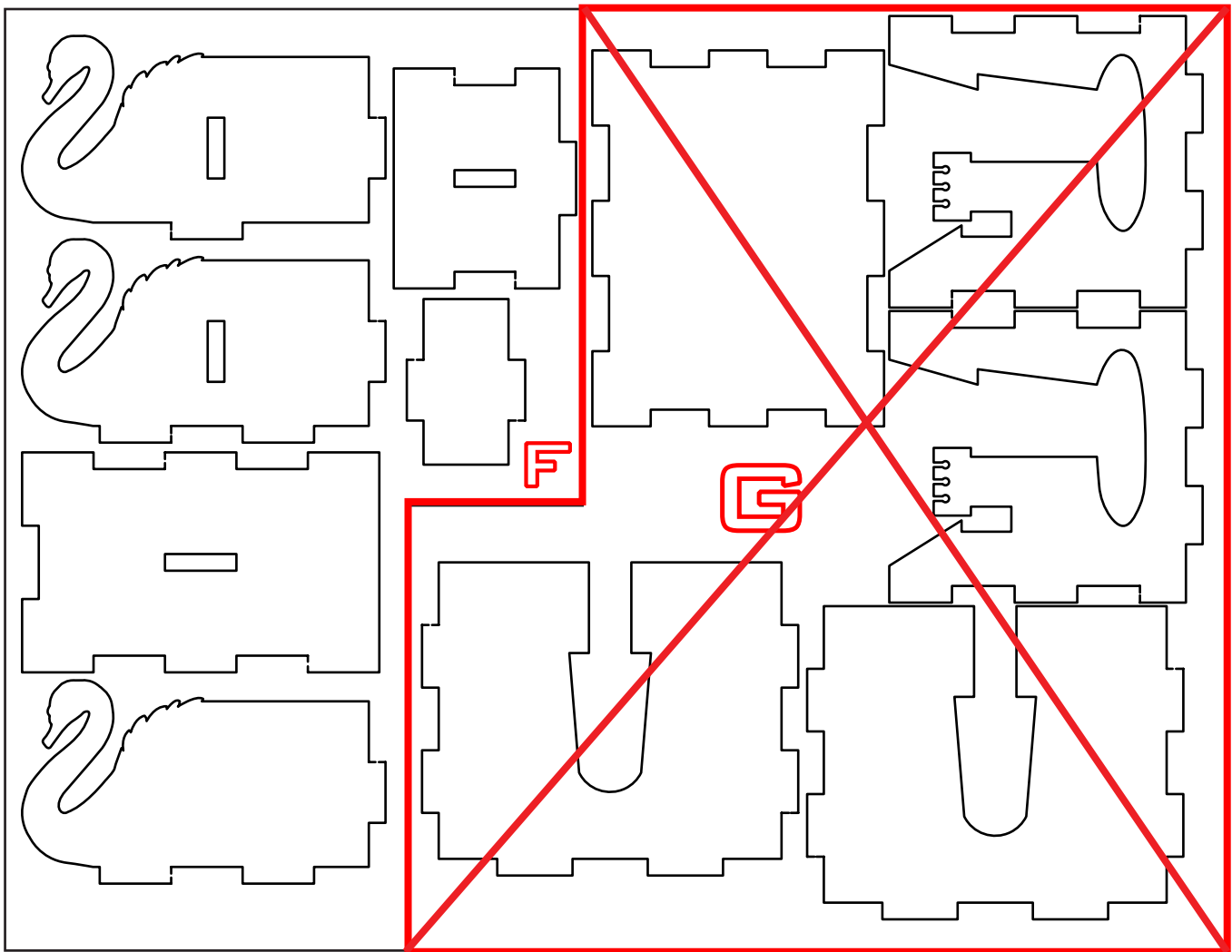




QUICK » START INSERT™ FOR
CASTLES OF MAD KING LUDWIG®



Sheet F1:

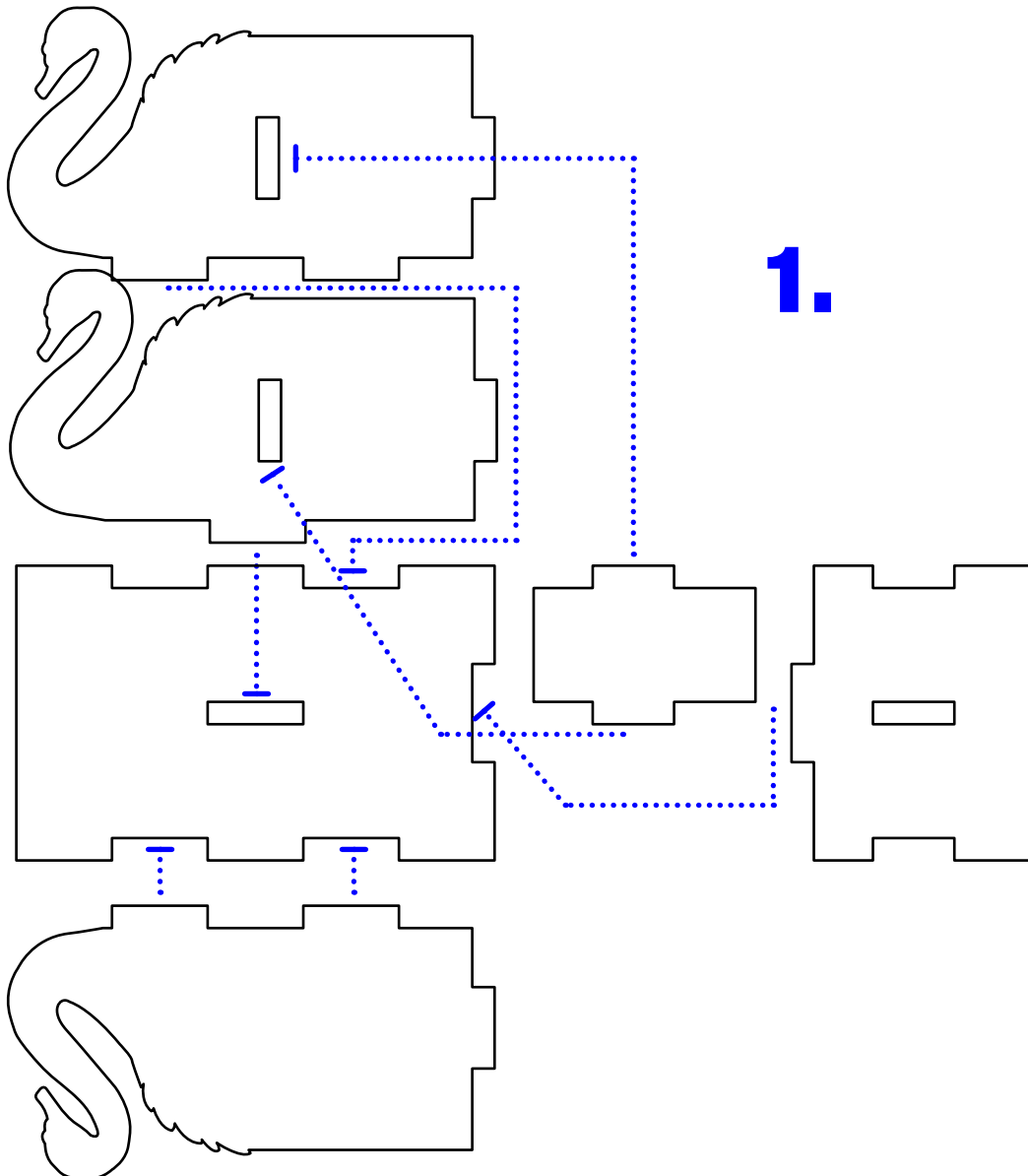


This Quick Start Insert is compatible with CASTLES OF MAD KING LUDWIG® and its expansions. This is a non-licensed product. ALL RIGHTS RESERVED by their respective trademark holders. No challenge to any intellectual property rights is intended or implied by representations of compatibility and no endorsements of any of our products by any other company is implied or represented.



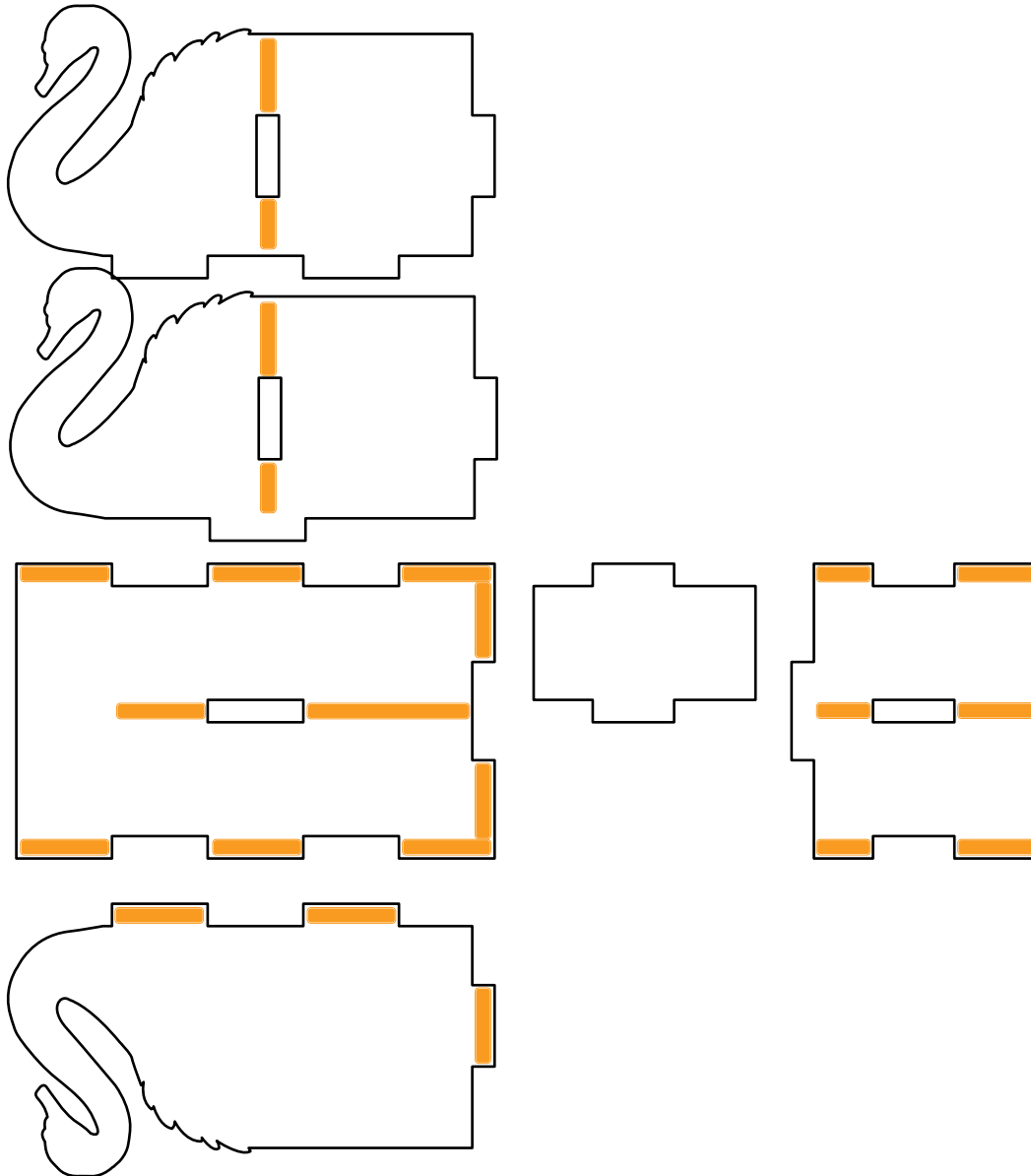
Section E Assembly Step #1:

1. Glue and assemble center divider and sides (There is no front piece to this tray)



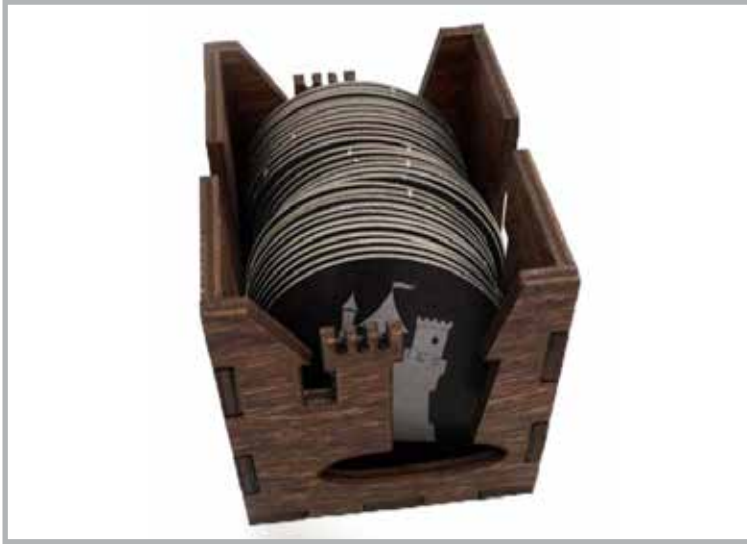


Glue Locations:

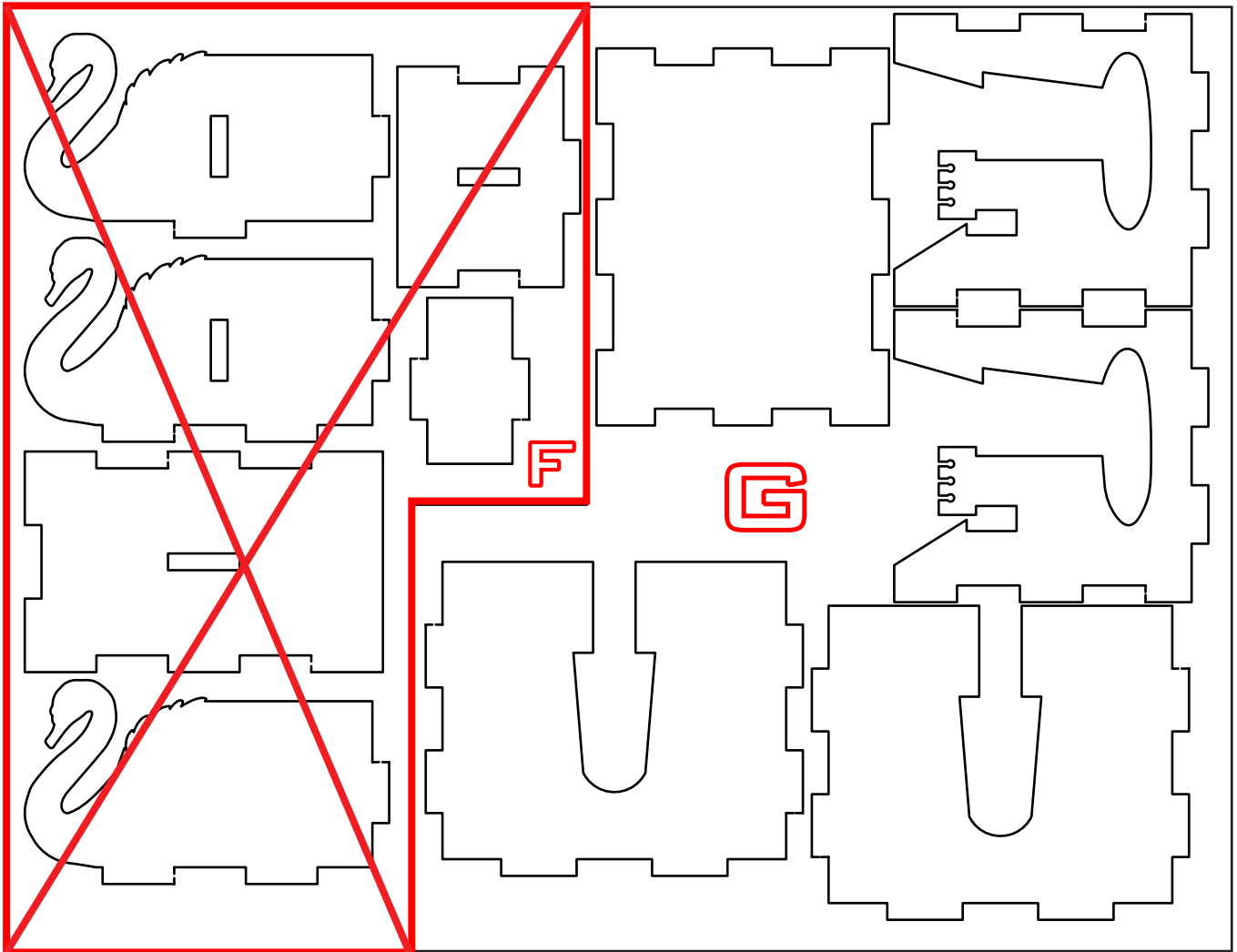




QUICK » START INSERT™ FOR
CASTLES OF MAD KING LUDWIG®



Sheet G1:

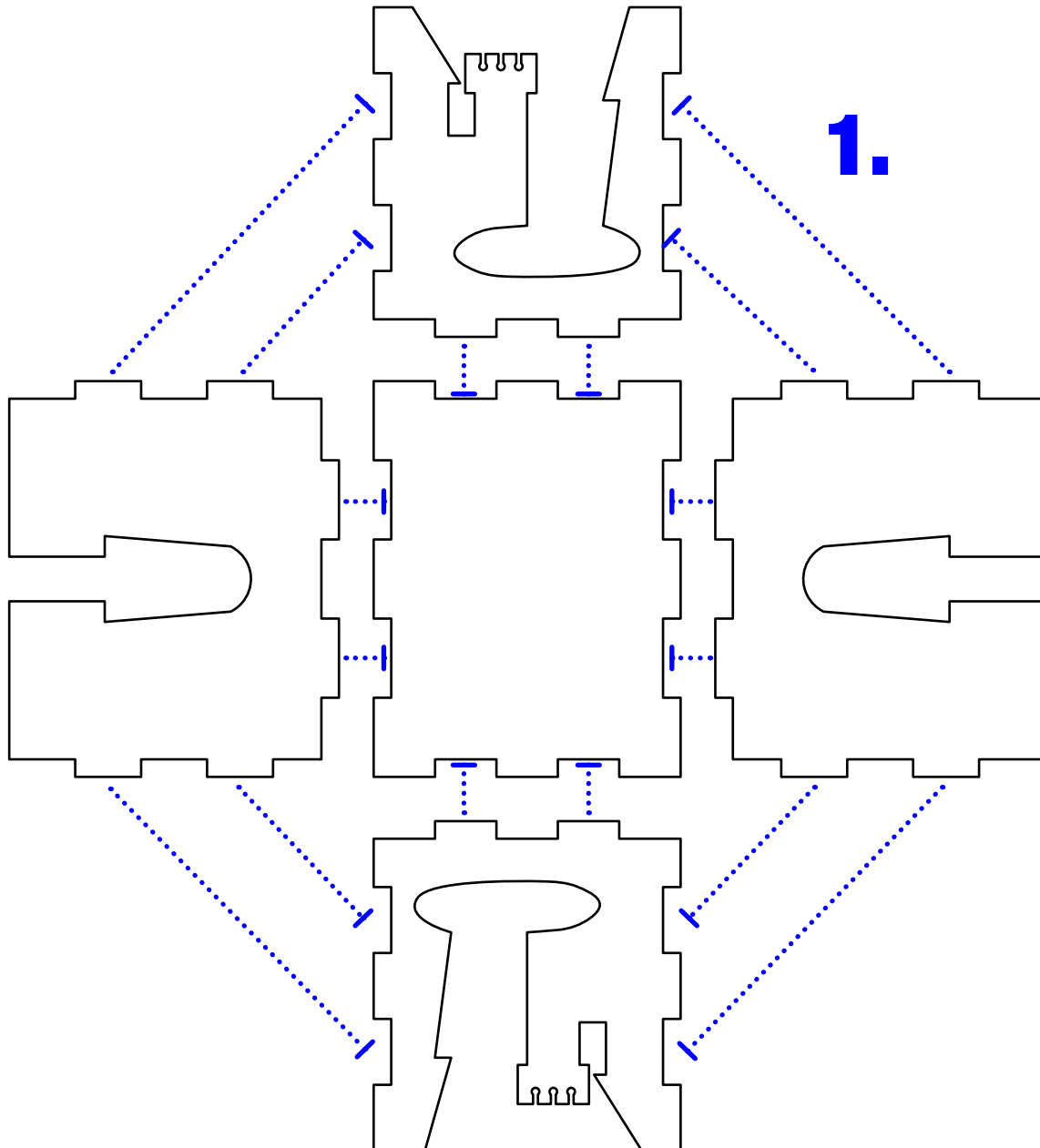


This Quick Start Insert is compatible with CASTLES OF MAD KING LUDWIG® and its expansions. This is a non-licensed product. ALL RIGHTS RESERVED by their respective trademark holders. No challenge to any intellectual property rights is intended or implied by representations of compatibility and no endorsements of any of our products by any other company is implied or represented.



Section E Assembly Step:

1. Glue and Assemble all side pieces

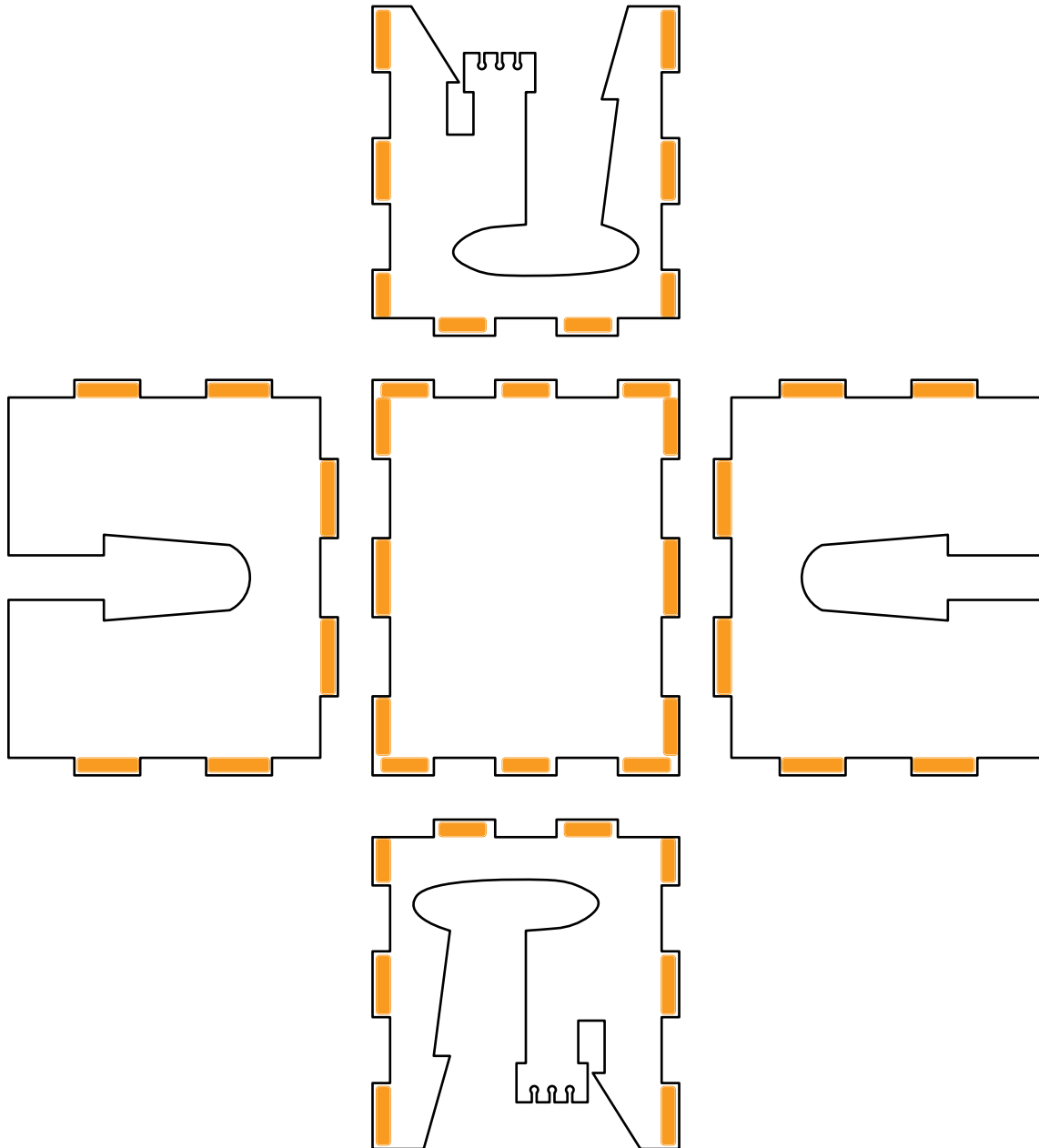




QUICK » START INSERT™ FOR
CASTLES OF MAD KING LUDWIG®



Glue Locations:



This Quick Start Insert is compatible with CASTLES OF MAD KING LUDWIG® and its expansions. This is a non-licensed product. ALL RIGHTS RESERVED by their respective trademark holders. No challenge to any intellectual property rights is intended or implied by representations of compatibility and no endorsements of any of our products by any other company is implied or represented.



QUICK»START INSERT™ FOR CASTLES OF MAD KING LUDWIG®

Bottom Layer Layout:



This Quick Start Insert is compatible with CASTLES OF MAD KING LUDWIG® and its expansions. This is a non-licensed product. ALL RIGHTS RESERVED by their respective trademark holders. No challenge to any intellectual property rights is intended or implied by representations of compatibility and no endorsements of any of our products by any other company is implied or represented.