

# ASSEMBLY INSTRUCTIONS FOR



*less work, more game*



## DEAD OF WINTER® THE LONG NIGHT

QUICK  START INSERT™

DEAD OF WINTER: The Long Night® is a registered trademark of Plaid Hat Games. Any mention of Dead of Winter: The Long Night® is for reference purposes only. ALL RIGHTS RESERVED by their respective trademark holders. No challenge to any intellectual property rights is intended or implied by representations of compatibility and no endorsements of any of our products by any other company is implied or represented.



# QUICK START INSERT™ FOR DEAD OF WINTER: THE LONG NIGHT®

## General Assembly Instructions

### The following are basic instructions for any of the Quick Start Inserts:

- All panels are labeled with an Alphabet letter (A, B, C, etc.). First sort all panels into piles by their letters before you begin to assemble.
- Layout the parts in the diagrams provided, to ensure you have all the parts
- Glue only the edges that come into contact with the wood (remove excess immediately)
- Allow 24 hours to dry before using

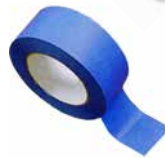
### Tips & Tricks

- Some of the parts might need to be slightly sanded on the edges for a perfect fit.
- Sometimes tapping the pieces with a small amount of force (with a mallet) helps create a tighter fit.
- Taping the outside corners of the boxes helps it hold in place while the glue is drying.
- If you break a part, don't hesitate calling we always carry spares – you just need to cover shipping. (most spares can be send in an envelope, if so we don't charge for shipping)

### Assembly Supplies



Beacon 527 or wood-glue  
(we recommend supper-glue)



Painters blue tape  
(painter's tape helps protect the finish)



Rubber mallet  
(or something to tap the pieces together)



Cotton swap/ Q-tip  
(or something to wipe the excess glue)



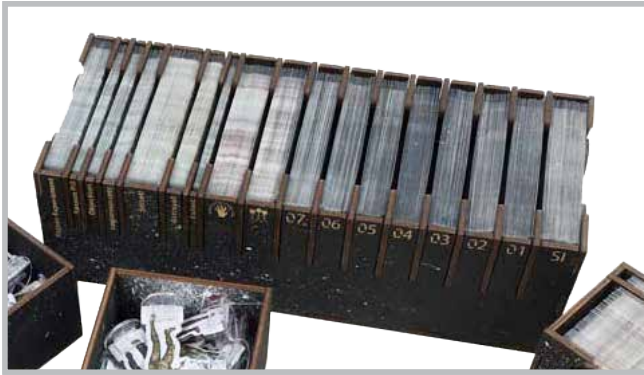
# QUICK START INSERT™ FOR DEAD OF WINTER: THE LONG NIGHT®



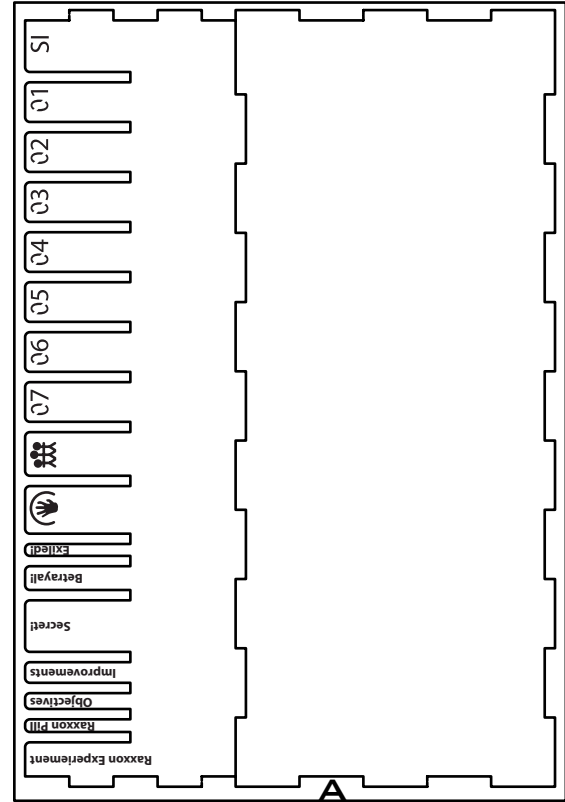
This Quick Start Insert is compatible with Dead of Winter: The Long Night® and its expansions. This is a non-licensed product. ALL RIGHTS RESERVED by their respective trademark holders. No challenge to any intellectual property rights is intended or implied by representations of compatibility and no endorsements of any of our products by any other company is implied or represented.



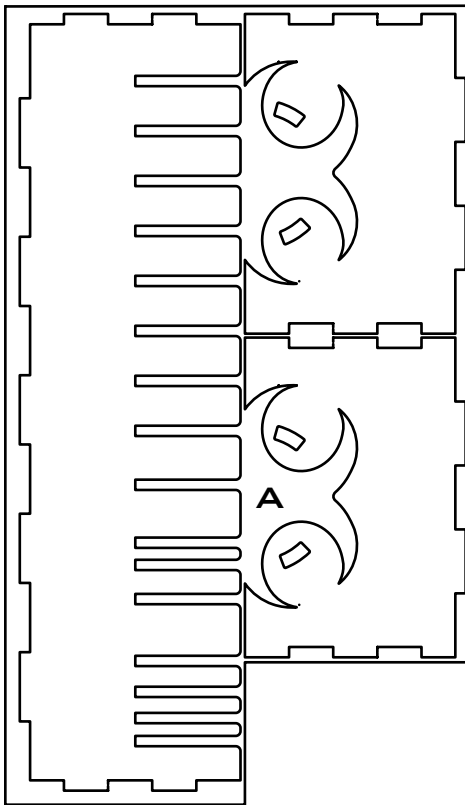
**QUICK » START INSERT™ FOR**  
**DEAD OF WINTER: THE LONG NIGHT ®**



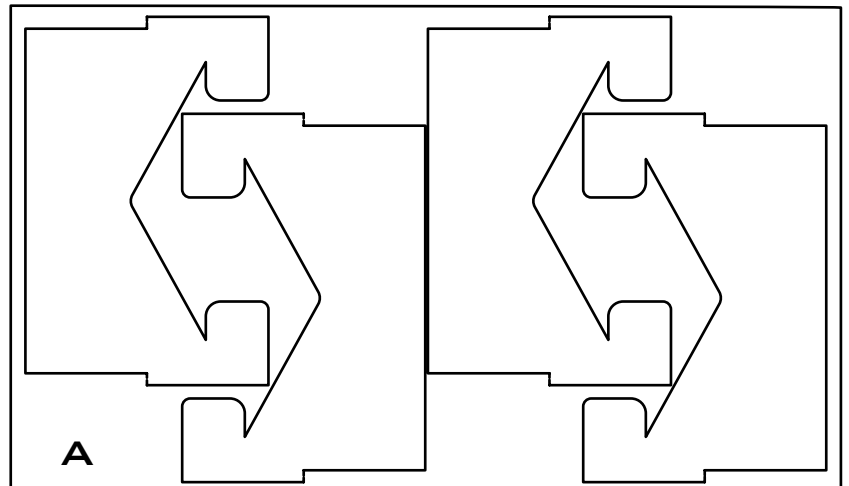
**Sheet A2:**



**Sheet A1:**



**Sheet A3, A4, A5, A6:**



This Quick Start Insert is compatible with Dead of Winter: The Long Night ® and its expansions. This is a non-licensed product. ALL RIGHTS RESERVED by their respective trademark holders. No challenge to any intellectual property rights is intended or implied by representations of compatibility and no endorsements of any of our products by any other company is implied or represented.

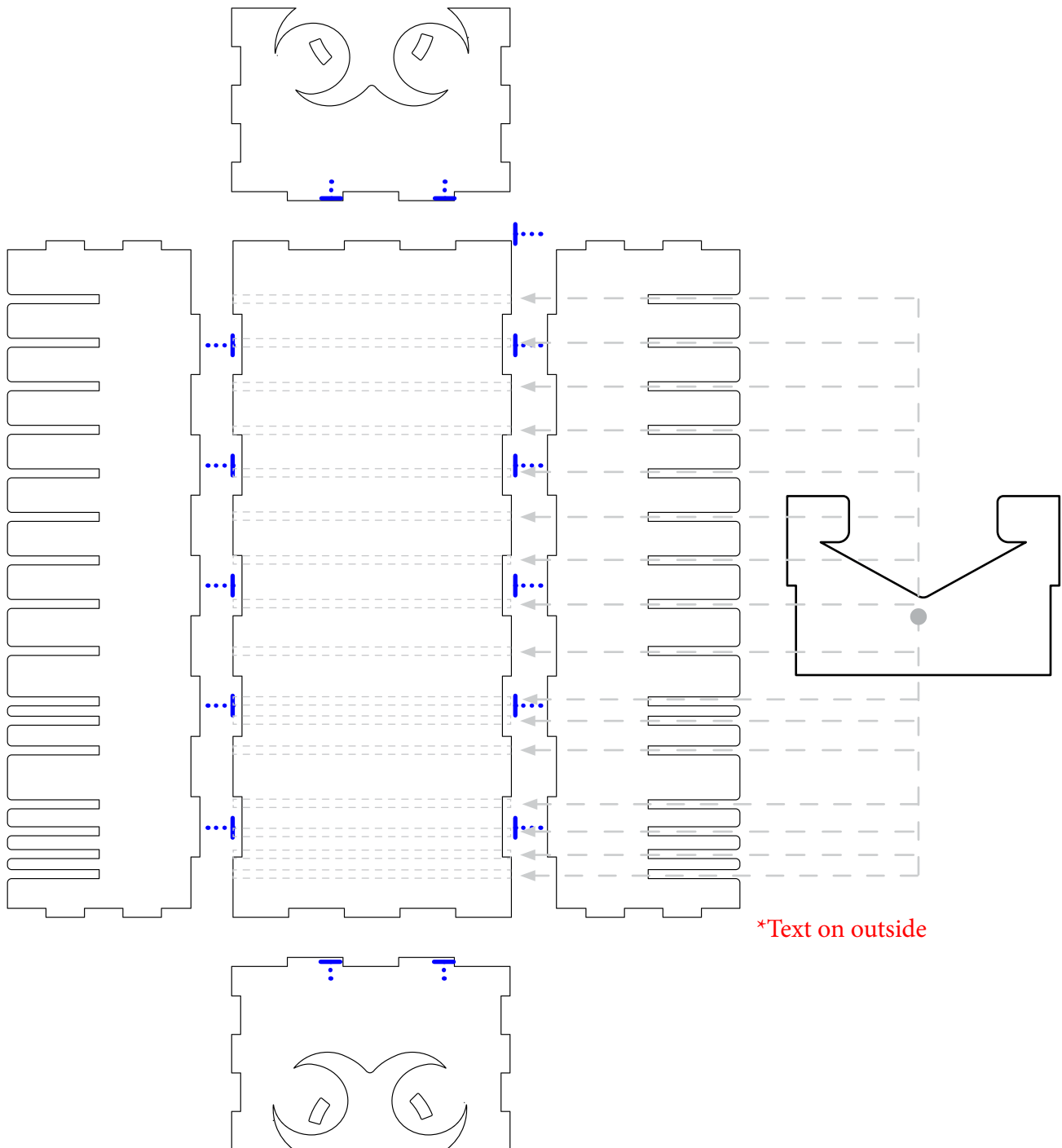


**Recommended Assembly Sequence**

*NOTE: There is no glue on the internal pieces, they stay in place by their interlocking fit*

1. Glue and press in all side pieces prior to gluing into base plate
2. Glue and insert long pieces, than glue on end pieces.

*\*Note: The front tab has the deeper cut out for ease of use in game*





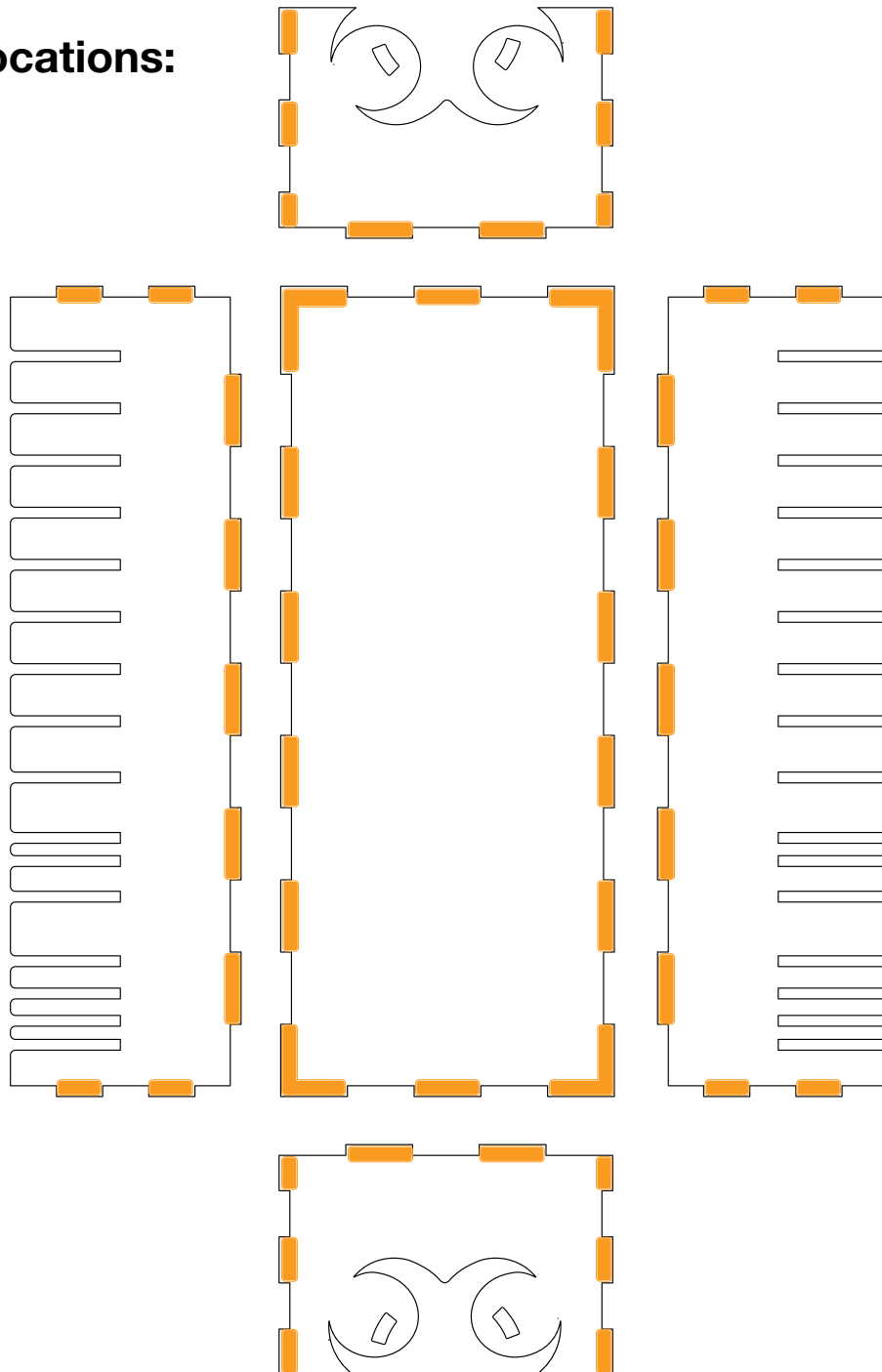
QUICK » START INSERT™ FOR  
DEAD OF WINTER: THE LONG NIGHT ®



## Glue Tips:

1. Glue, place pieces together, wipe of excess glue THEN tape firmly (Quickly)
2. Glue each exterior joint where two pieces come together
3. Don't glue tabs that slide into other pieces of wood (it just scrapes off)

## Glue Locations:



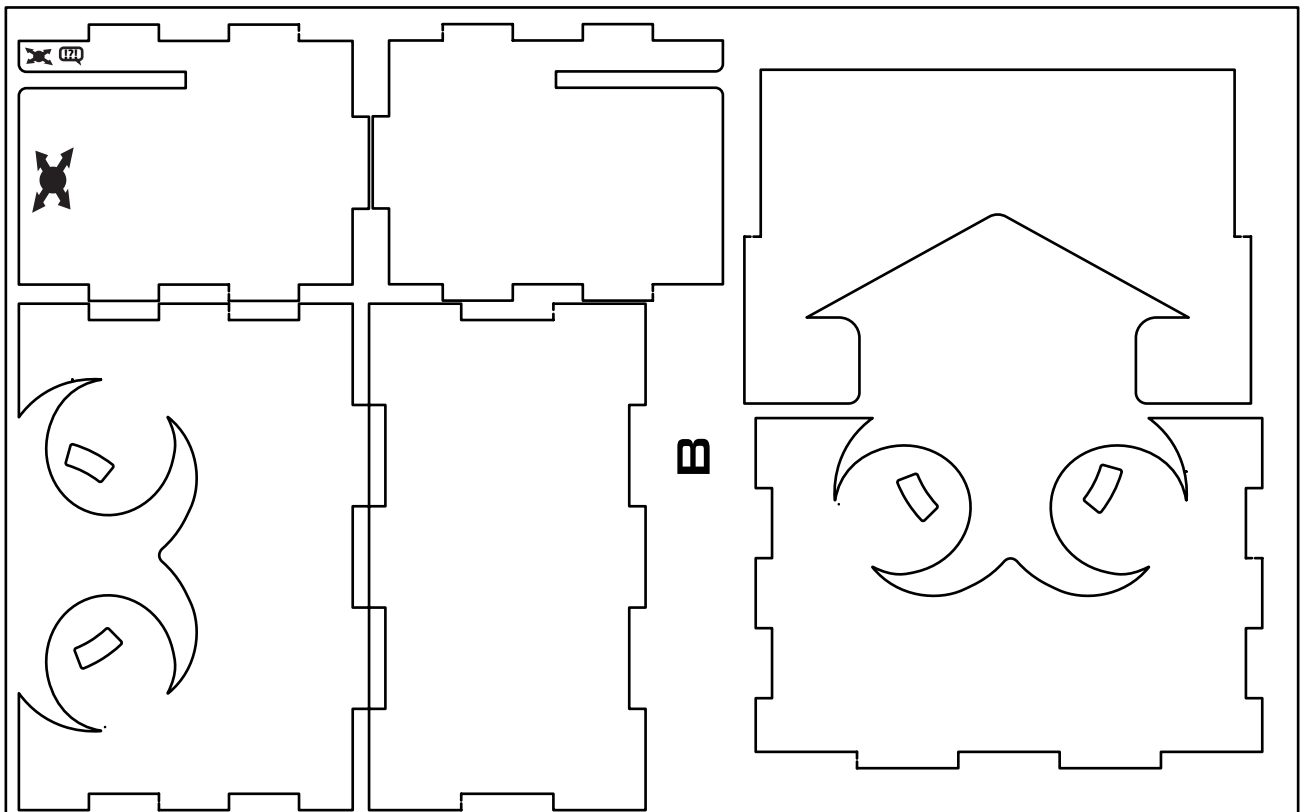
\*Text on outside



**QUICK » START INSERT™** FOR  
**DEAD OF WINTER: THE LONG NIGHT ®**



## Sheet B1:

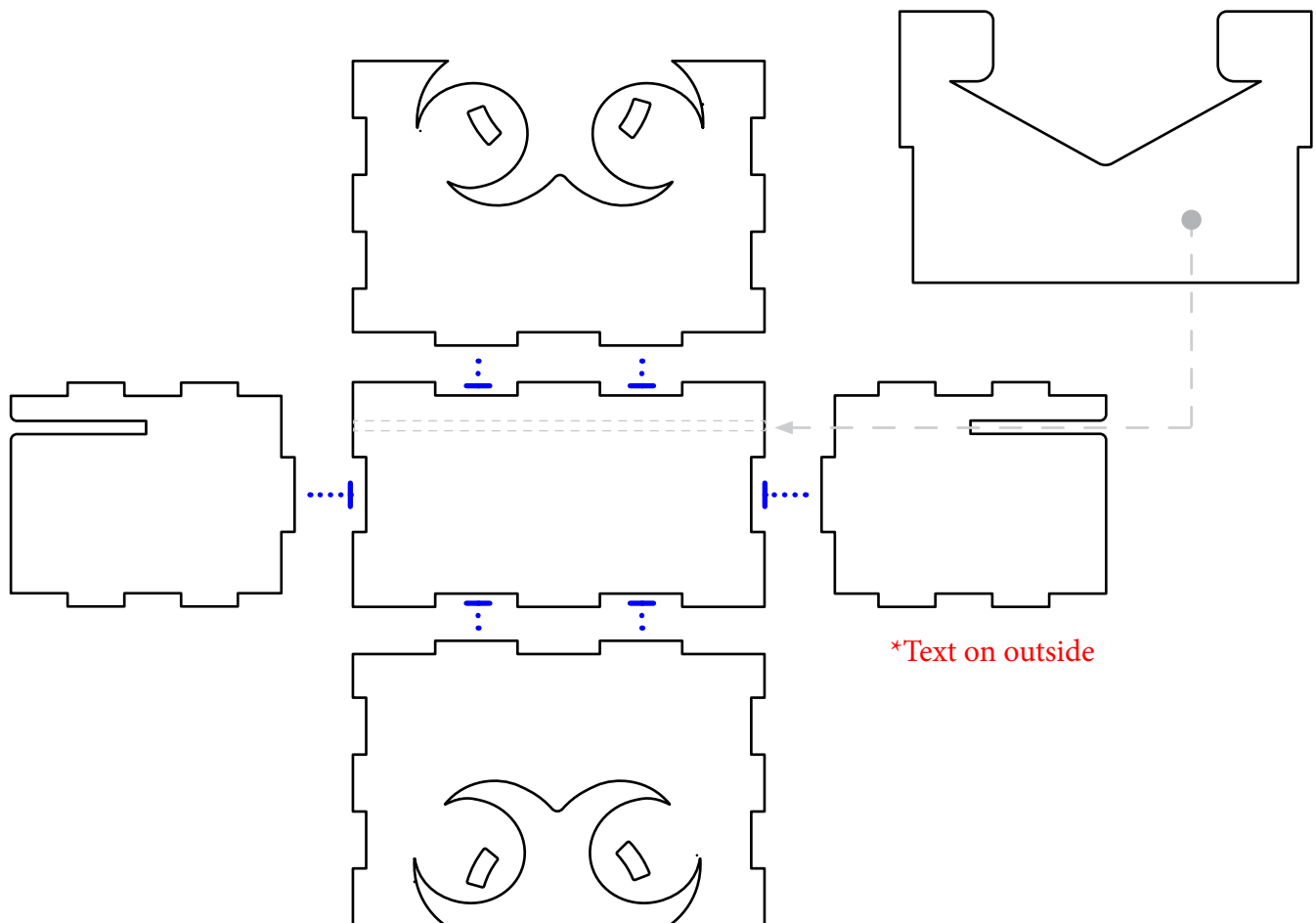


This Quick Start Insert is compatible with Dead of Winter: The Long Night ® and its expansions. This is a non-licensed product. ALL RIGHTS RESERVED by their respective trademark holders. No challenge to any intellectual property rights is intended or implied by representations of compatibility and no endorsements of any of our products by any other company is implied or represented.



### Recommended Assembly Sequence

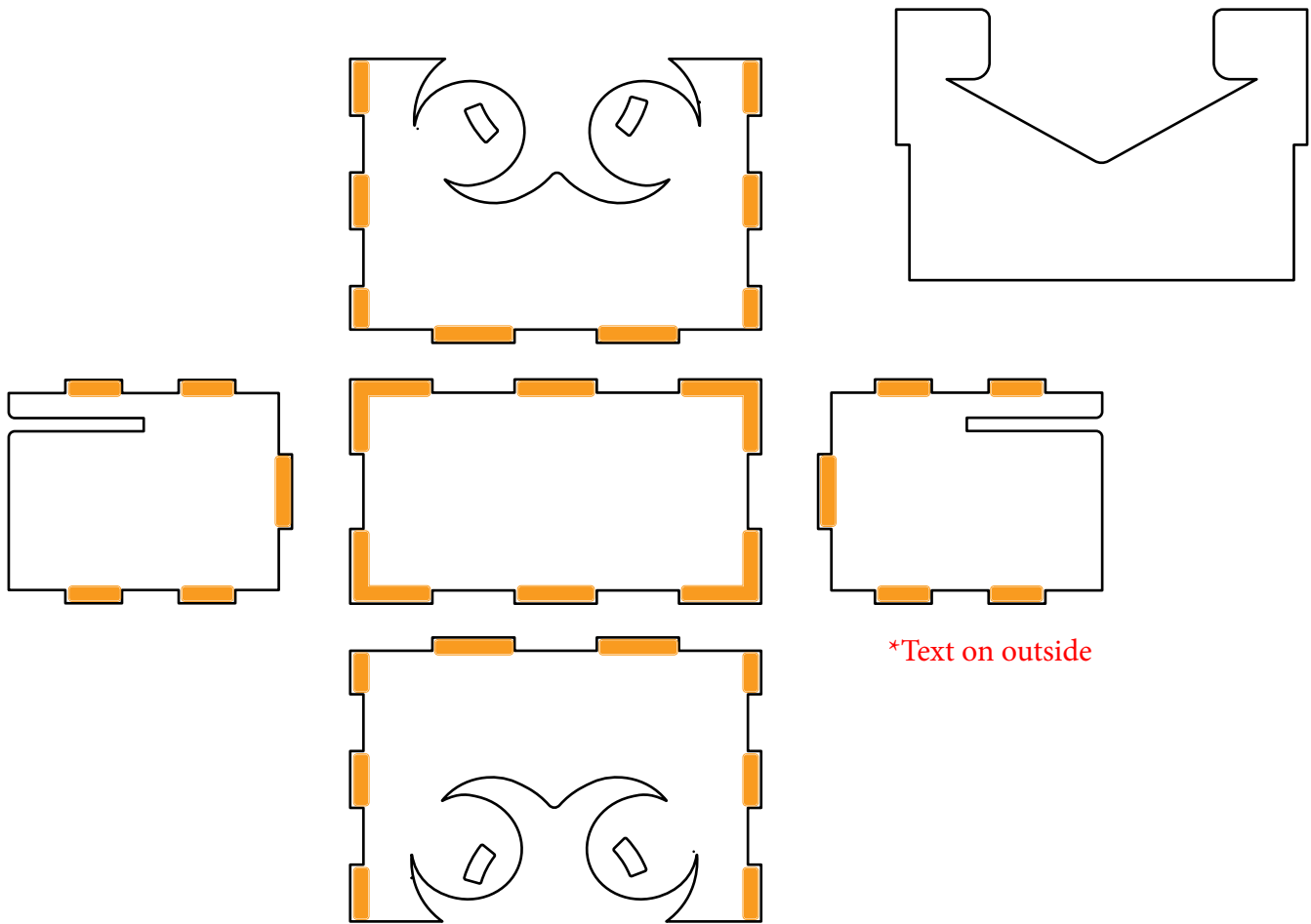
1. Build and glue center structure first
2. Glue center structure to base plate
2. Glue all side pieces





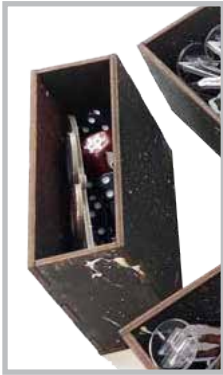


## Glue Locations:

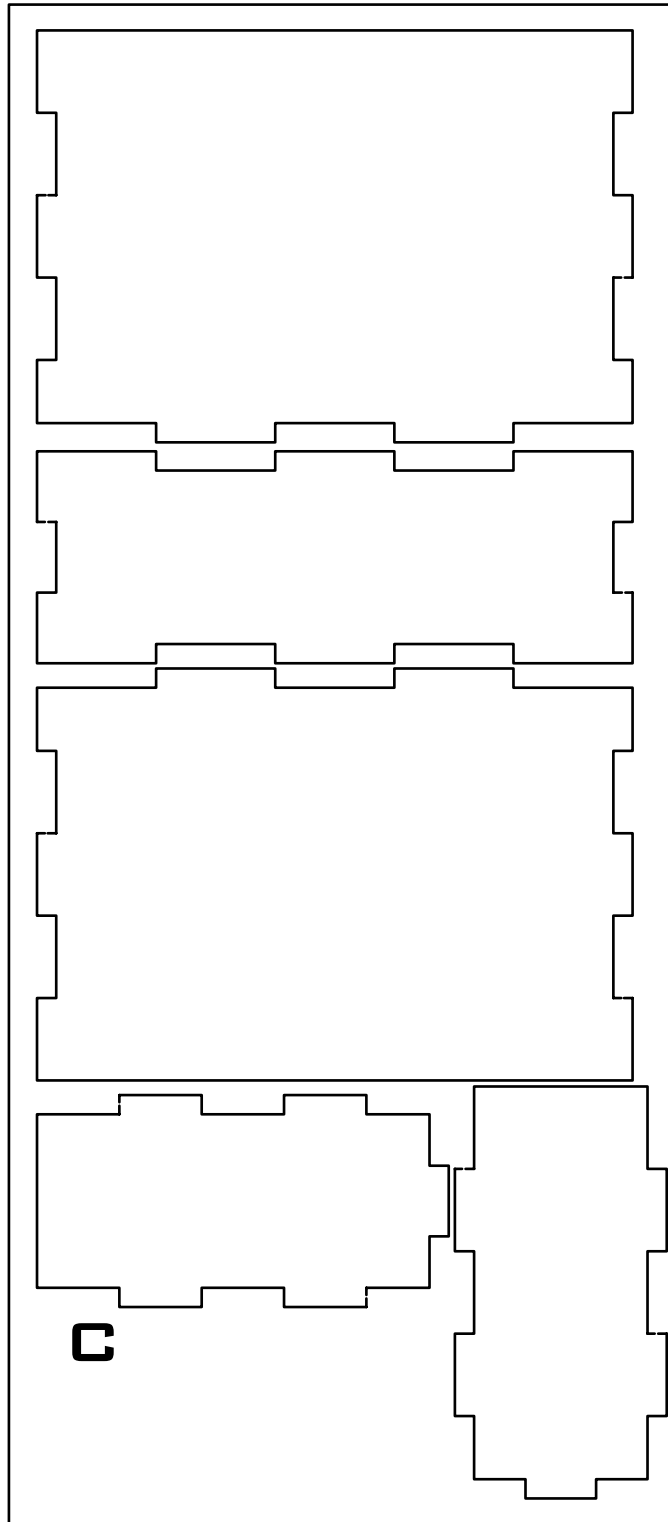




**QUICK » START INSERT™** FOR  
**DEAD OF WINTER: THE LONG NIGHT ®**



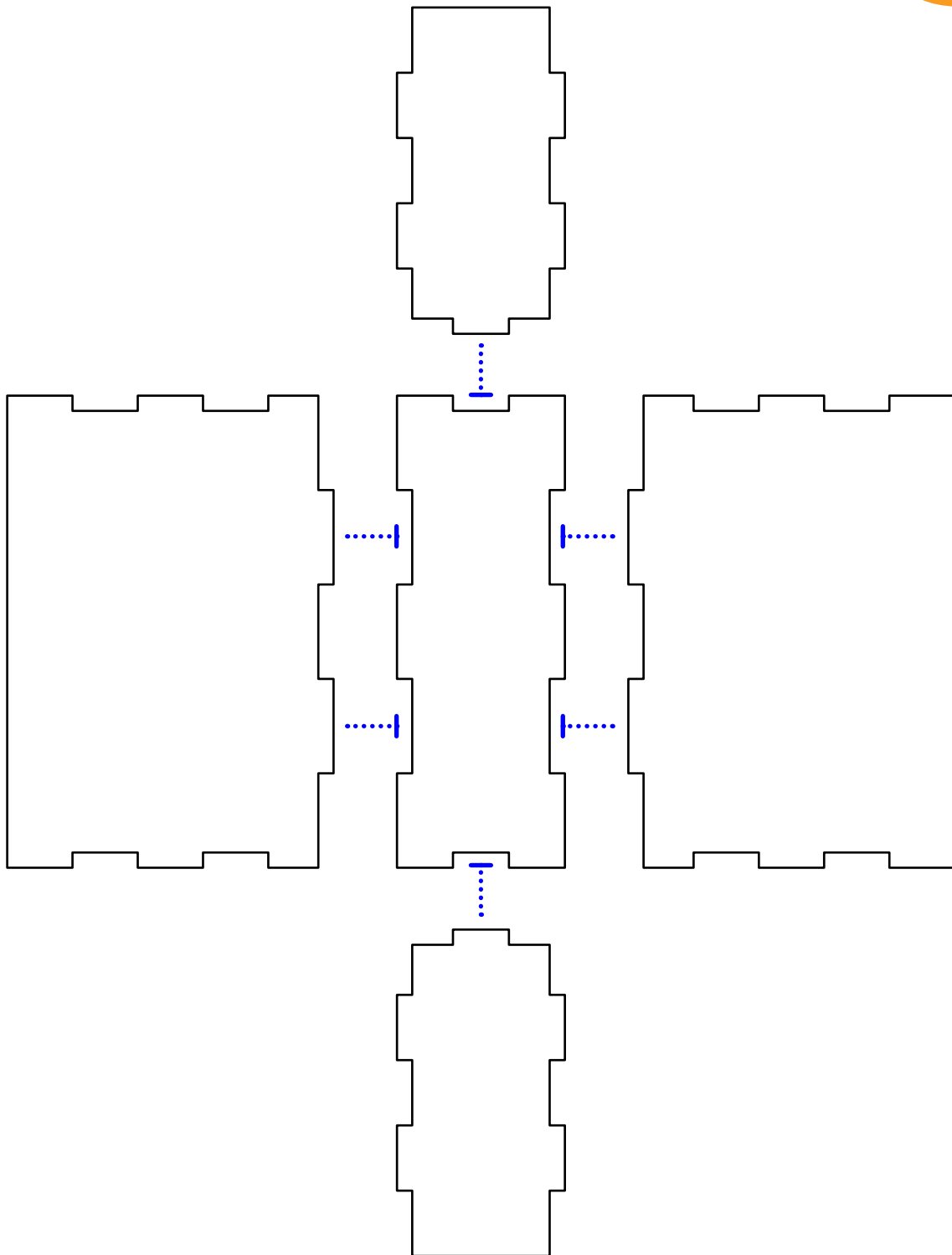
## Sheet C1:



This Quick Start Insert is compatible with Dead of Winter: The Long Night ® and its expansions. This is a non-licensed product. ALL RIGHTS RESERVED by their respective trademark holders. No challenge to any intellectual property rights is intended or implied by representations of compatibility and no endorsements of any of our products by any other company is implied or represented.



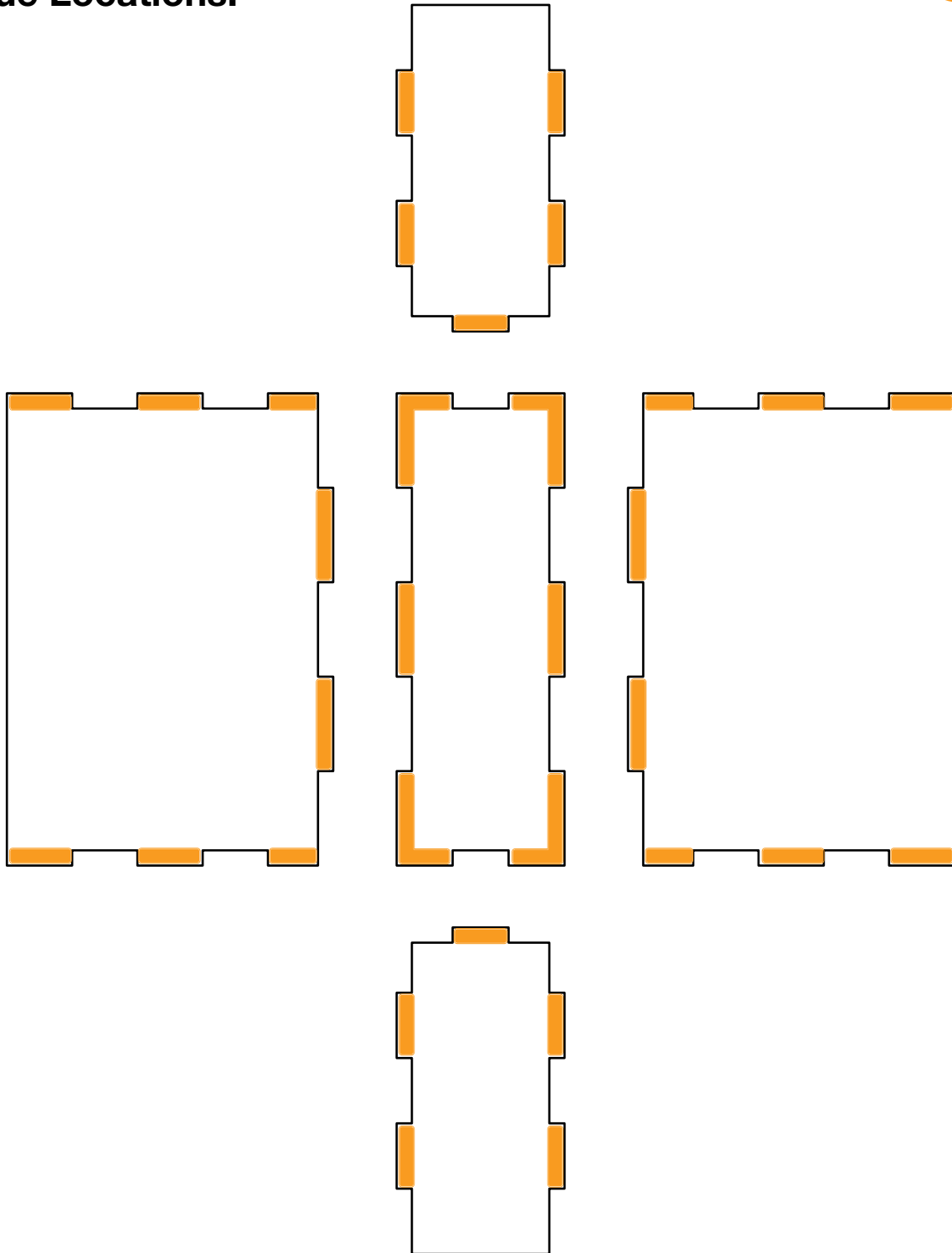
**QUICK » START INSERT™** FOR  
DEAD OF WINTER: THE LONG NIGHT ®



This Quick Start Insert is compatible with Dead of Winter: The Long Night ® and its expansions. This is a non-licensed product. ALL RIGHTS RESERVED by their respective trademark holders. No challenge to any intellectual property rights is intended or implied by representations of compatibility and no endorsements of any of our products by any other company is implied or represented.



## Glue Locations:

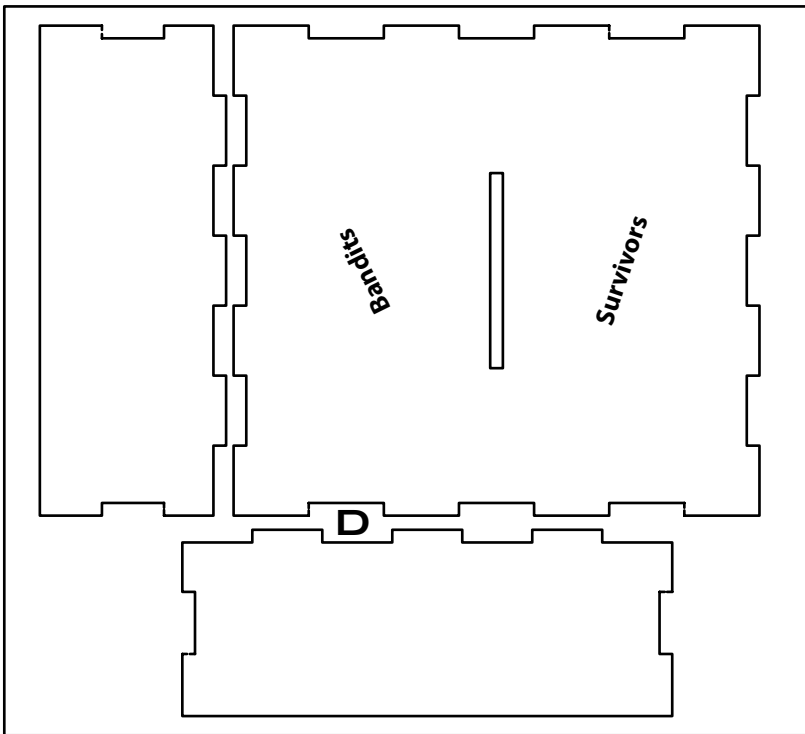




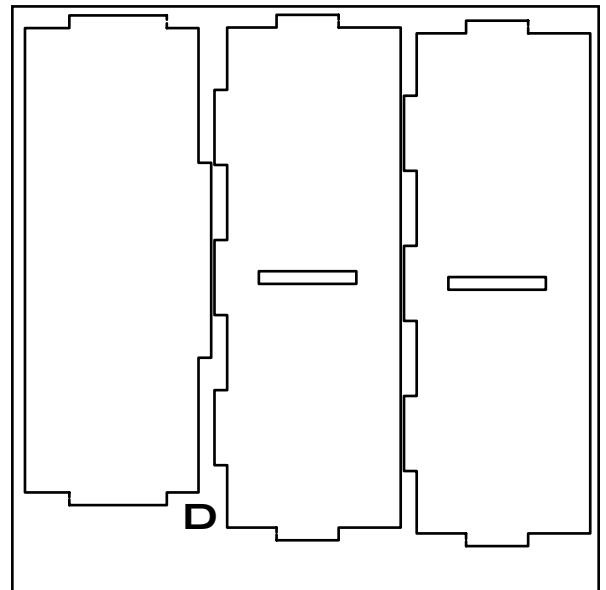
**QUICK » START INSERT™** FOR  
**DEAD OF WINTER: THE LONG NIGHT ®**



### Sheet D1:



### Sheet D2:

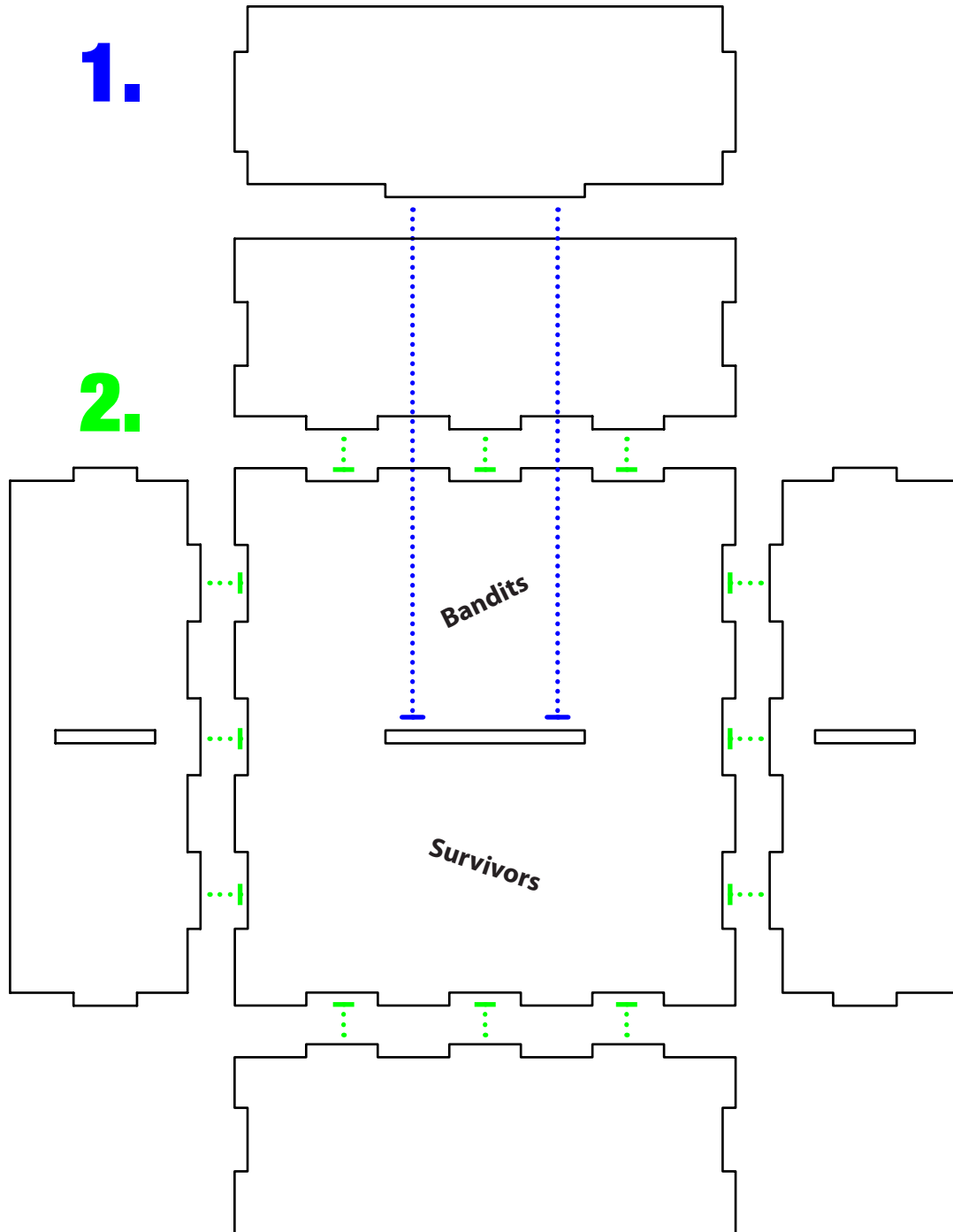


This Quick Start Insert is compatible with Dead of Winter: The Long Night ® and its expansions. This is a non-licensed product. ALL RIGHTS RESERVED by their respective trademark holders. No challenge to any intellectual property rights is intended or implied by representations of compatibility and no endorsements of any of our products by any other company is implied or represented.



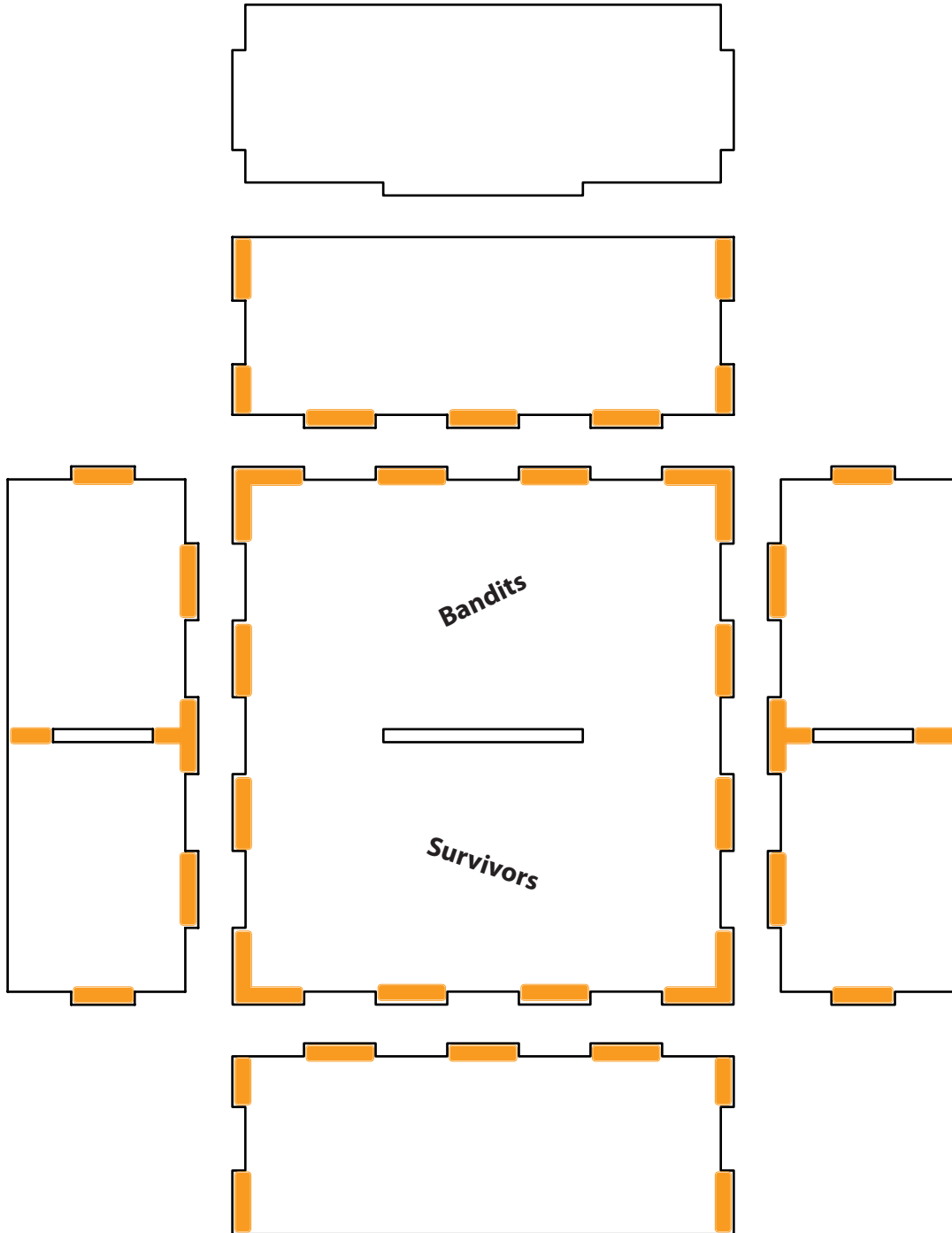
### Recommended Assembly Sequence

1. Build and glue center structure first
2. Glue center structure to base plate
2. Glue one side first, glue angled pieces, glue other side and two end pieces





## Glue Locations:

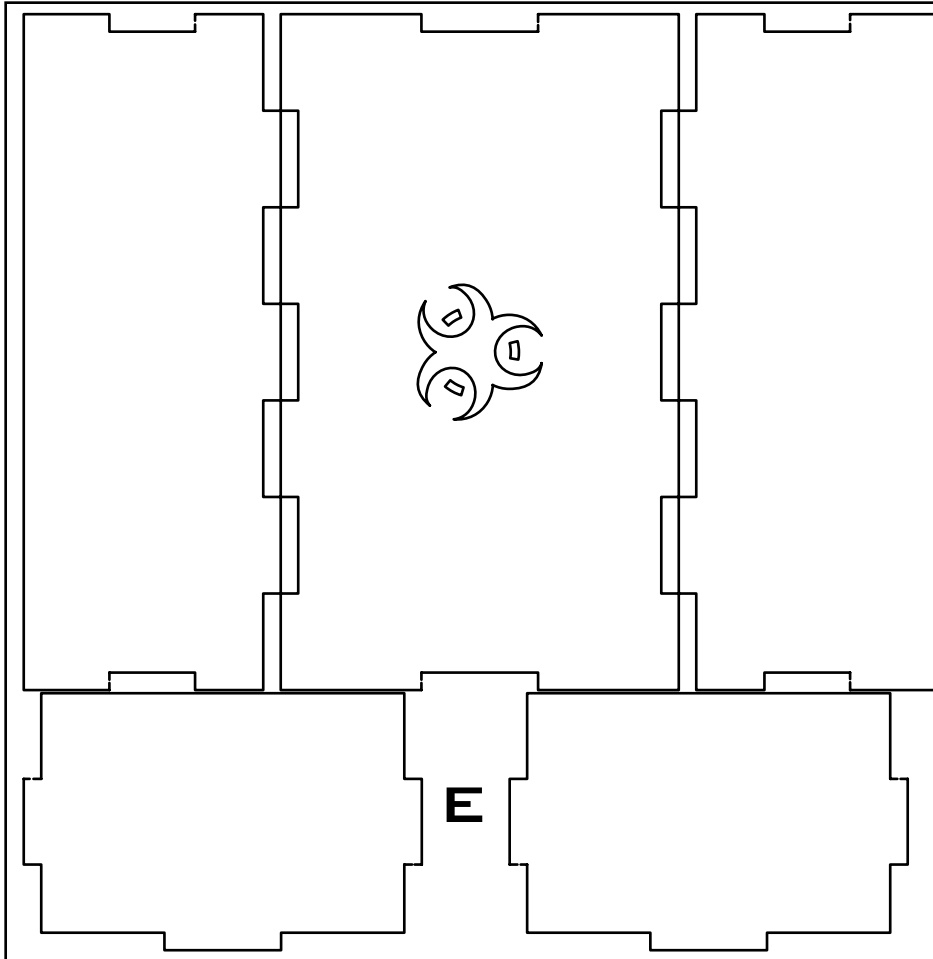




**QUICK » START INSERT™** FOR  
**DEAD OF WINTER: THE LONG NIGHT ®**



## Sheet E1:



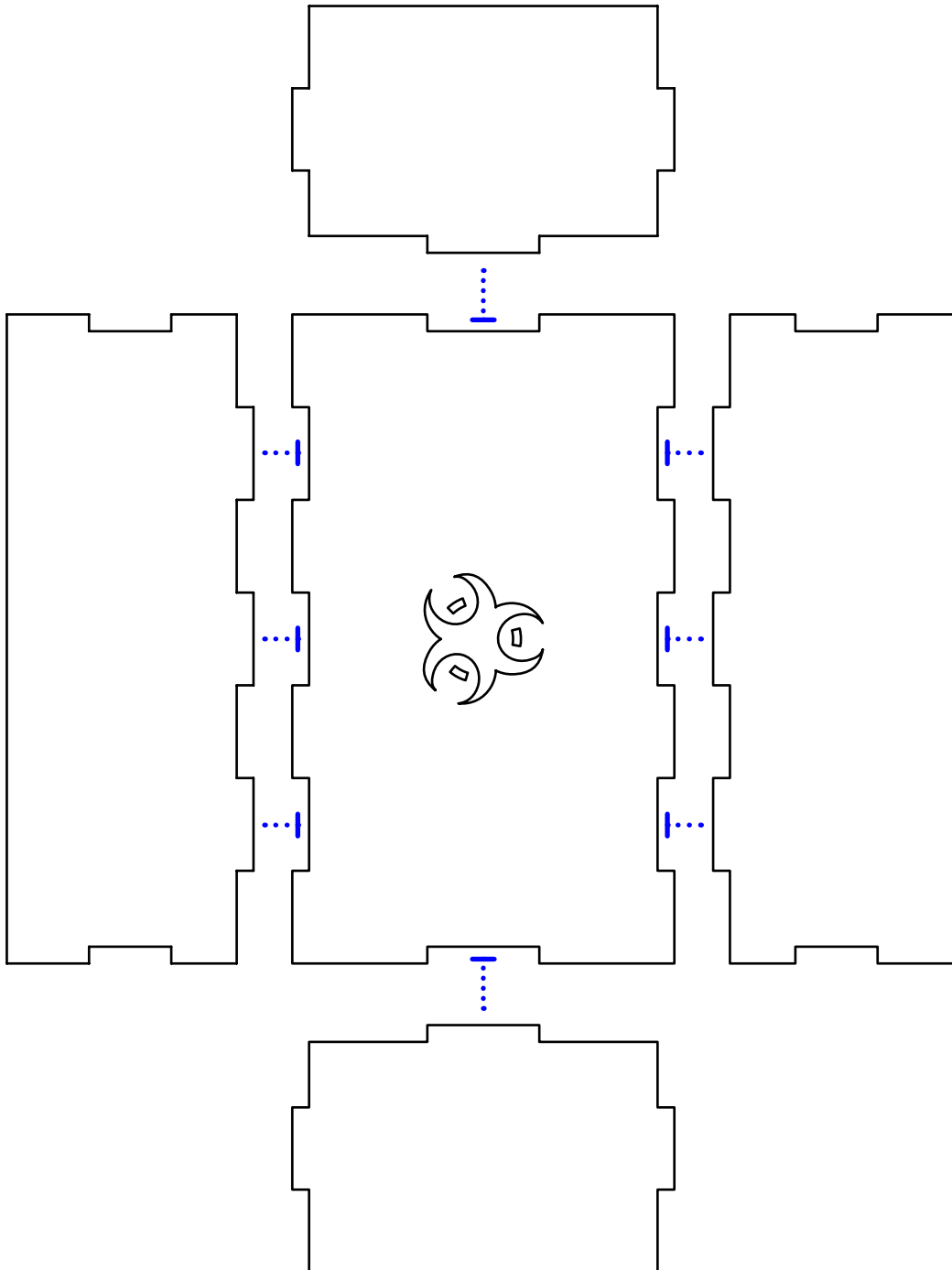
This Quick Start Insert is compatible with Dead of Winter: The Long Night ® and its expansions. This is a non-licensed product. ALL RIGHTS RESERVED by their respective trademark holders. No challenge to any intellectual property rights is intended or implied by representations of compatibility and no endorsements of any of our products by any other company is implied or represented.





## Recommended Assembly Sequence

1. Glue all side pieces

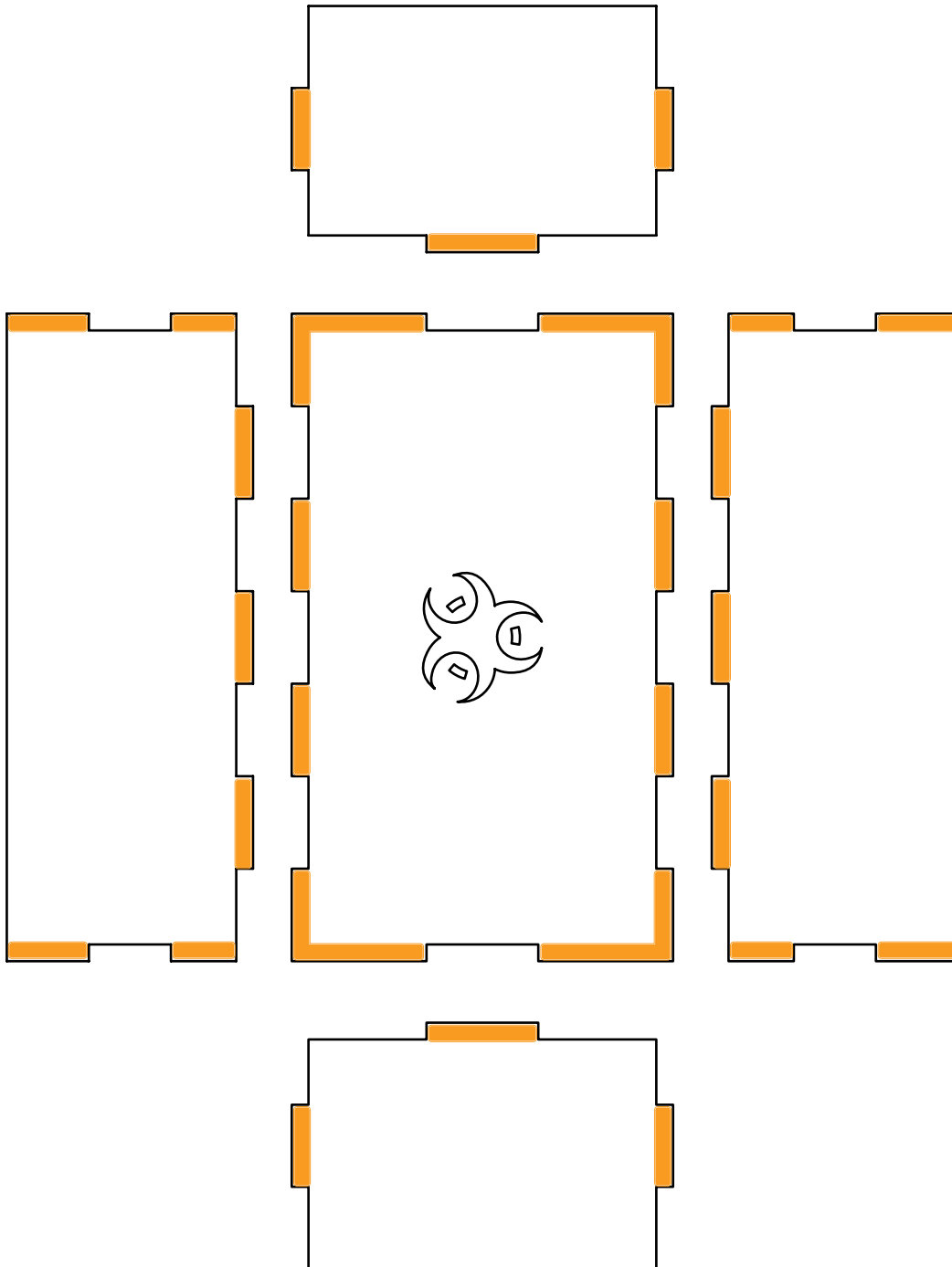




**QUICK » START INSERT™** FOR  
DEAD OF WINTER: THE LONG NIGHT ®



## Glue Locations:



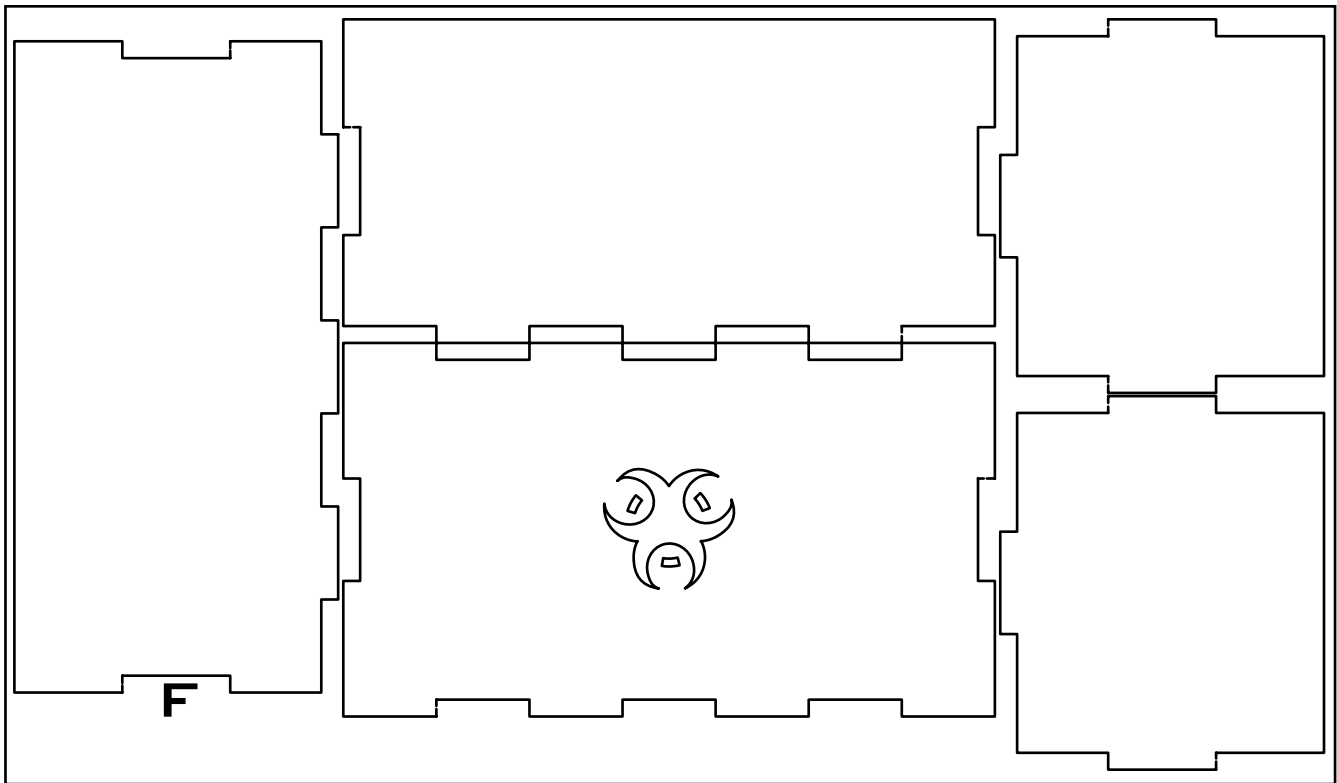
This Quick Start Insert is compatible with Dead of Winter: The Long Night ® and its expansions. This is a non-licensed product. ALL RIGHTS RESERVED by their respective trademark holders. No challenge to any intellectual property rights is intended or implied by representations of compatibility and no endorsements of any of our products by any other company is implied or represented.



**QUICK » START INSERT™** FOR  
**DEAD OF WINTER: THE LONG NIGHT ®**



## Sheet F1:

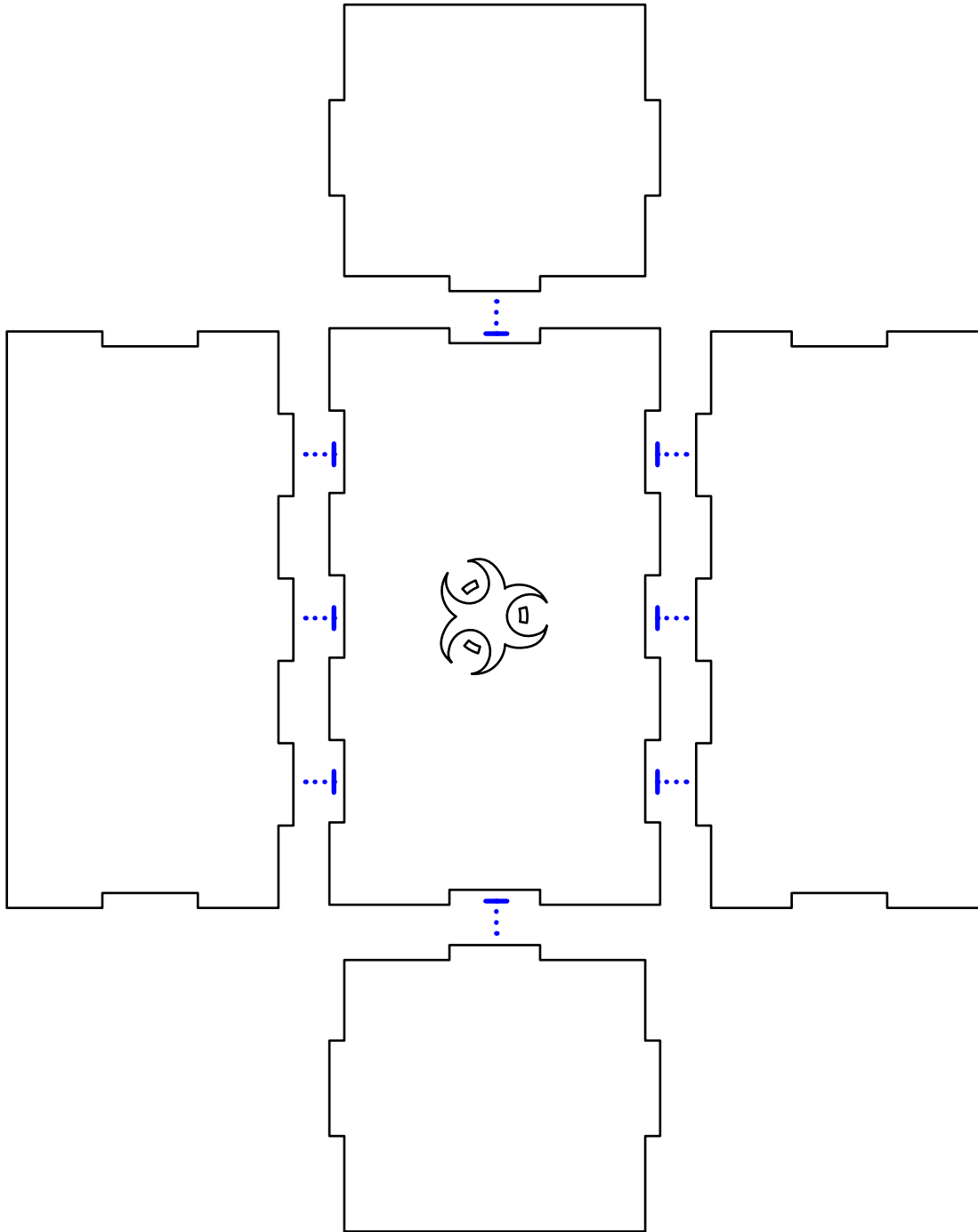


This Quick Start Insert is compatible with Dead of Winter: The Long Night ® and its expansions. This is a non-licensed product. ALL RIGHTS RESERVED by their respective trademark holders. No challenge to any intellectual property rights is intended or implied by representations of compatibility and no endorsements of any of our products by any other company is implied or represented.



### Recommended Assembly Sequence

1. Separate different pieces (Notice slight difference in pieces)
2. Glue and assemble

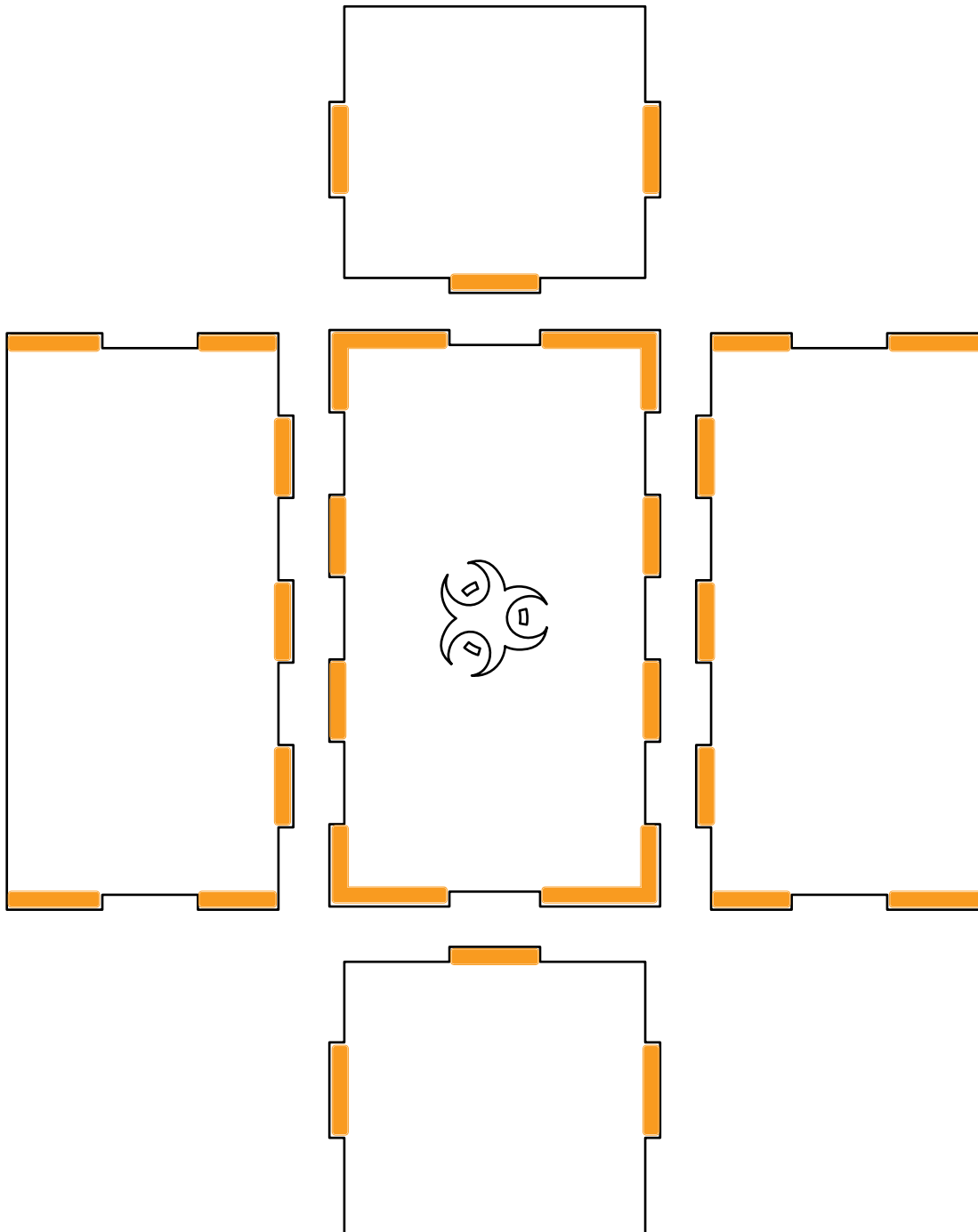




**QUICK » START INSERT™** FOR  
DEAD OF WINTER: THE LONG NIGHT ®



## Glue Locations:



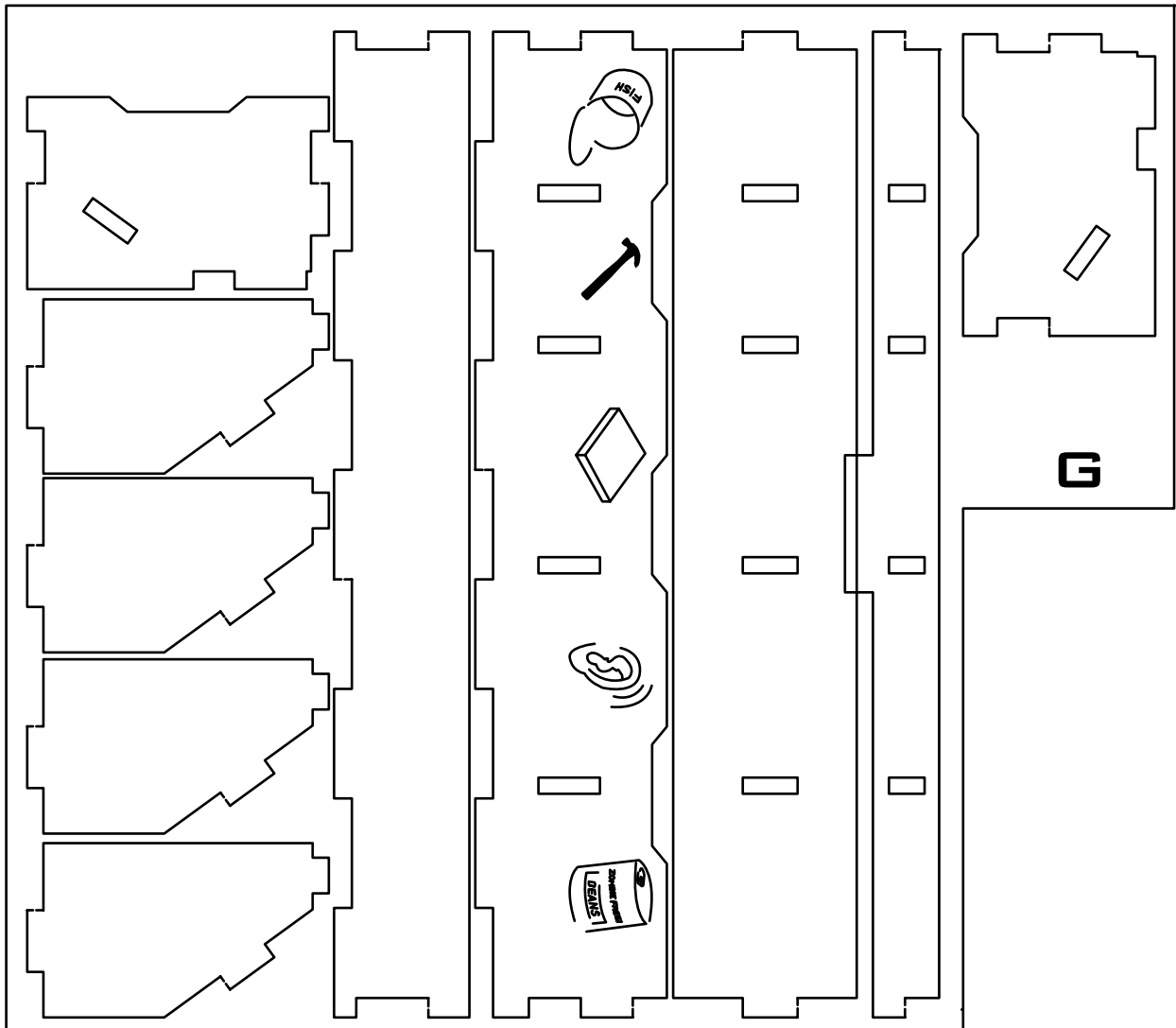
This Quick Start Insert is compatible with Dead of Winter: The Long Night ® and its expansions. This is a non-licensed product. ALL RIGHTS RESERVED by their respective trademark holders. No challenge to any intellectual property rights is intended or implied by representations of compatibility and no endorsements of any of our products by any other company is implied or represented.



**QUICK » START INSERT™** FOR  
**DEAD OF WINTER: THE LONG NIGHT ®**



## Sheet G1:

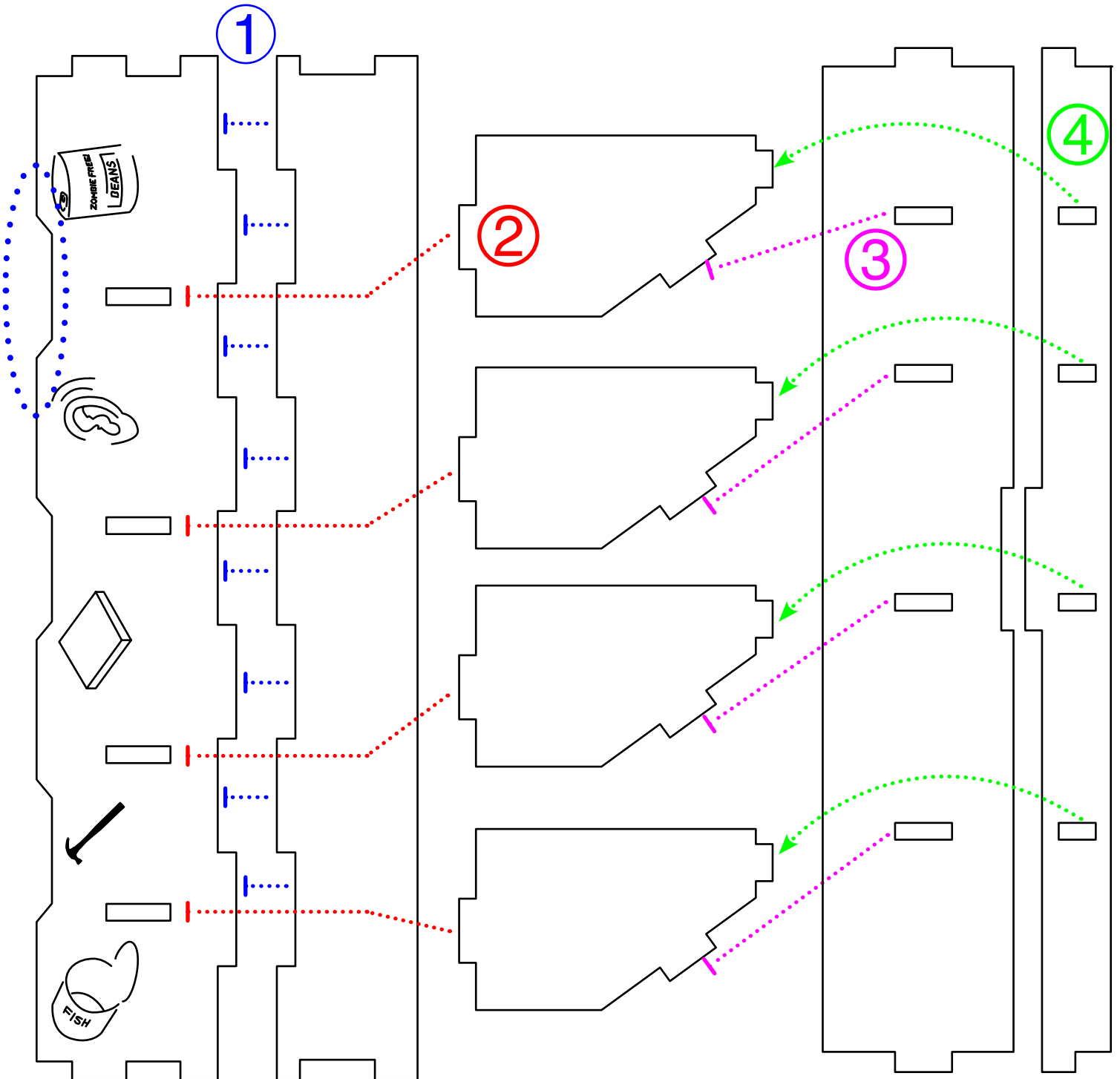


This Quick Start Insert is compatible with Dead of Winter: The Long Night ® and its expansions. This is a non-licensed product. ALL RIGHTS RESERVED by their respective trademark holders. No challenge to any intellectual property rights is intended or implied by representations of compatibility and no endorsements of any of our products by any other company is implied or represented.



### Recommended Assembly Sequence

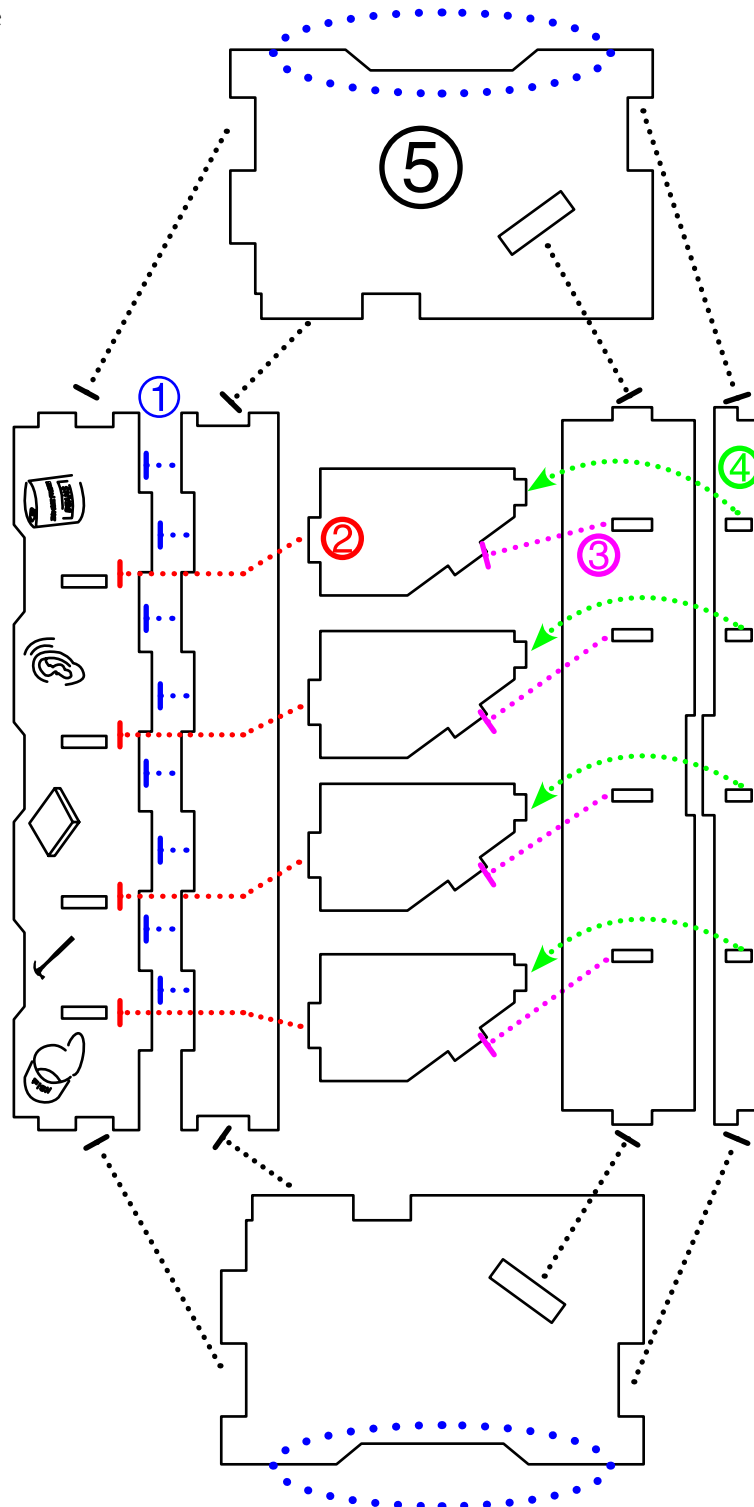
1. Separate different pieces (Notice slight difference in pieces)
2. Glue and assemble





### Recommended Assembly Sequence

1. Separate different pieces (Notice slight difference in pieces)
2. Glue and assemble



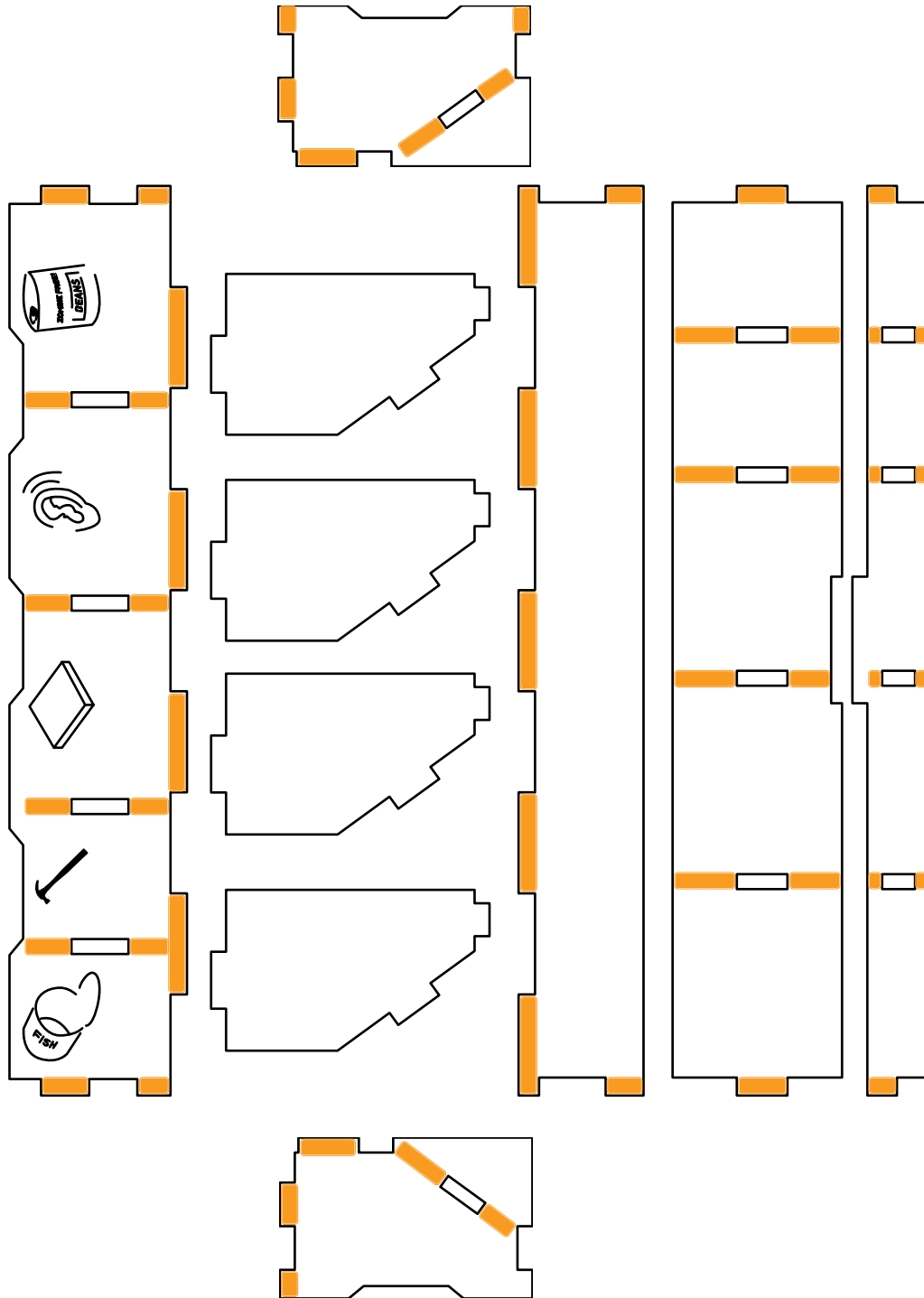




**QUICK » START INSERT™** FOR  
**DEAD OF WINTER: THE LONG NIGHT ®**



## Glue Locations:



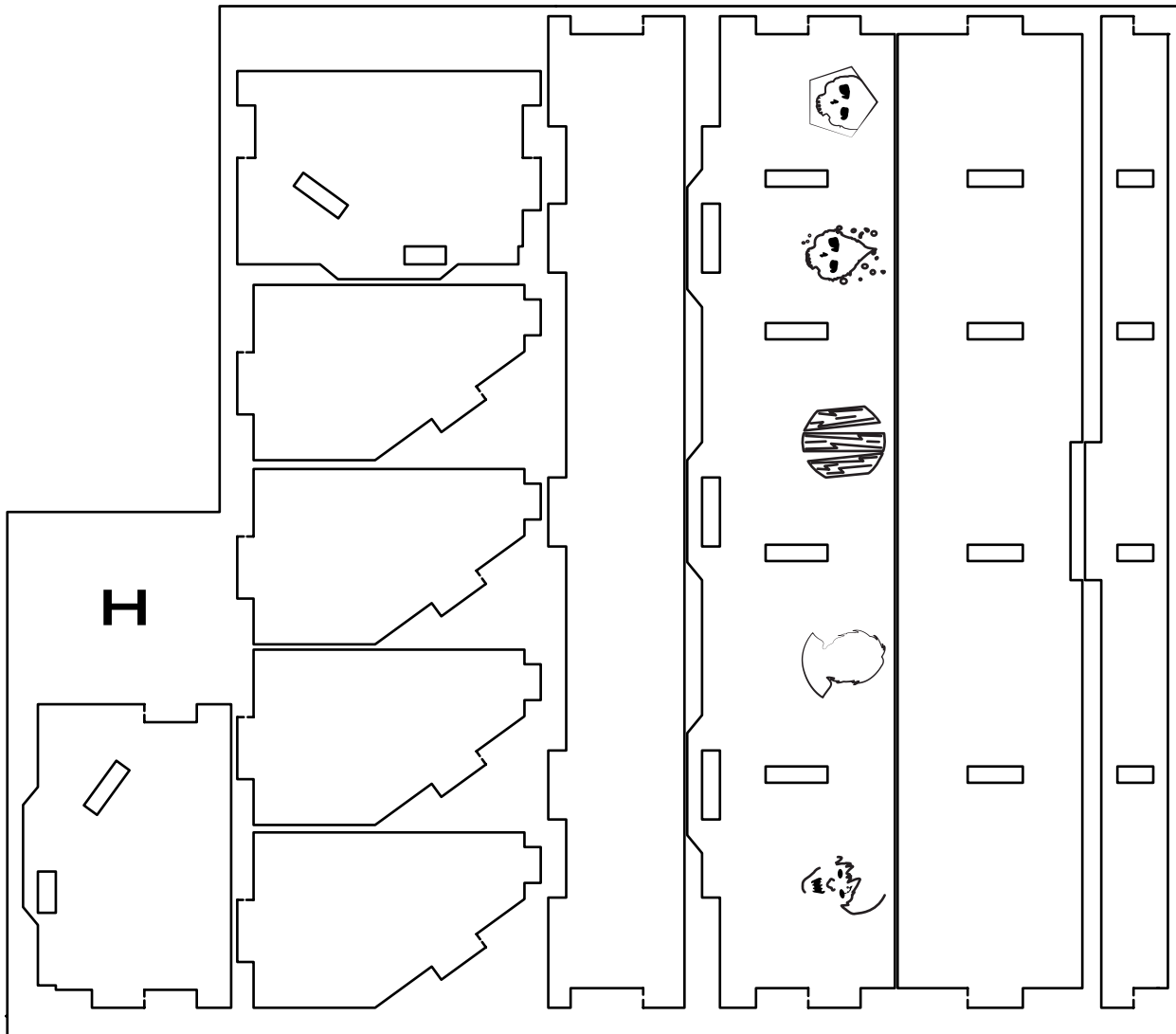
This Quick Start Insert is compatible with Dead of Winter: The Long Night ® and its expansions. This is a non-licensed product. ALL RIGHTS RESERVED by their respective trademark holders. No challenge to any intellectual property rights is intended or implied by representations of compatibility and no endorsements of any of our products by any other company is implied or represented.



**QUICK » START INSERT™** FOR  
**DEAD OF WINTER: THE LONG NIGHT ®**



## Sheet H1:

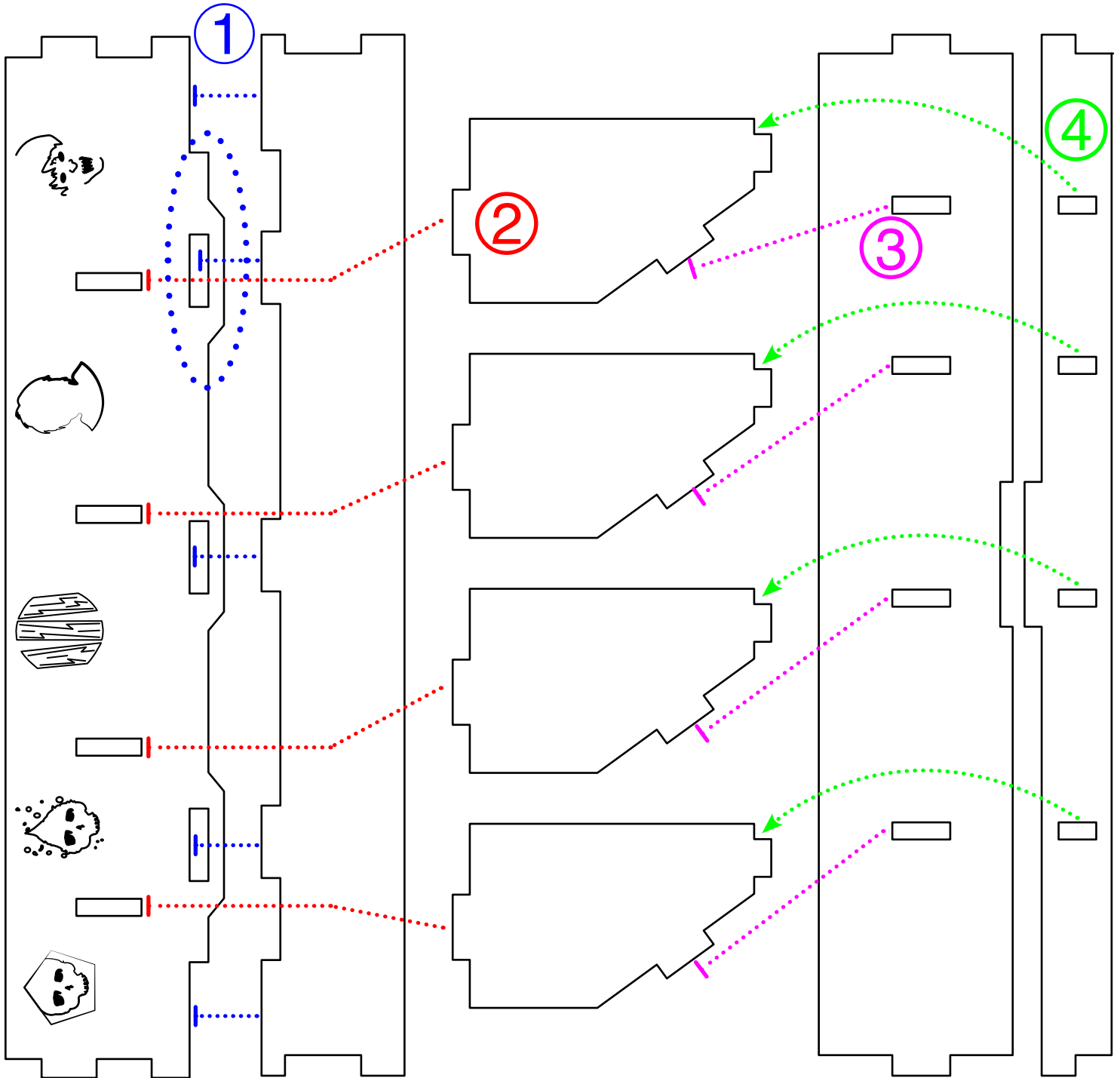


This Quick Start Insert is compatible with Dead of Winter: The Long Night ® and its expansions. This is a non-licensed product. ALL RIGHTS RESERVED by their respective trademark holders. No challenge to any intellectual property rights is intended or implied by representations of compatibility and no endorsements of any of our products by any other company is implied or represented.



### Recommended Assembly Sequence

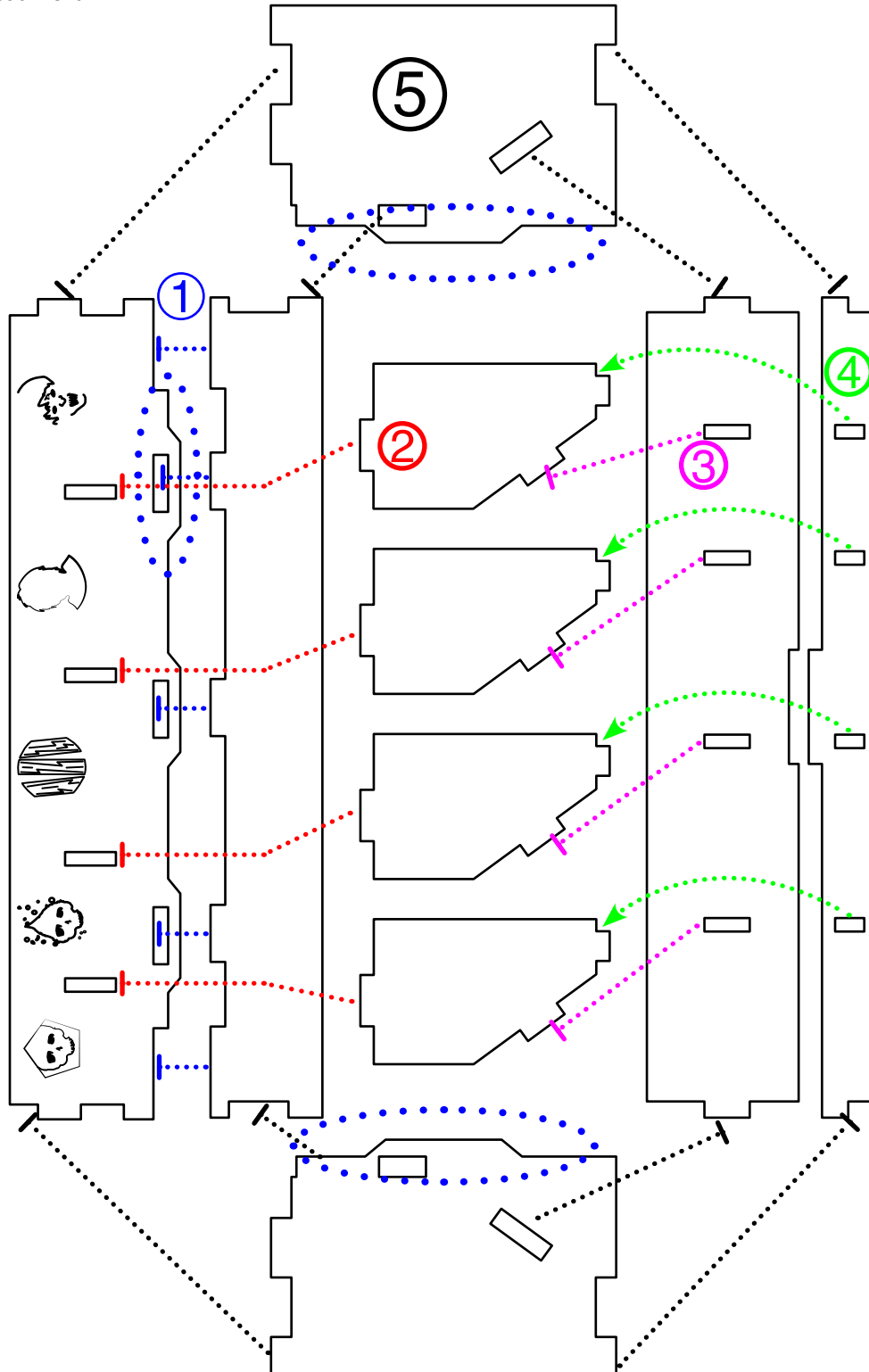
1. Separate different pieces (Notice slight difference in pieces)
2. Glue and assemble





### Recommended Assembly Sequence

1. Separate different pieces (Notice slight difference in pieces)
2. Glue and assemble

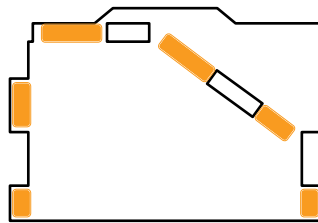
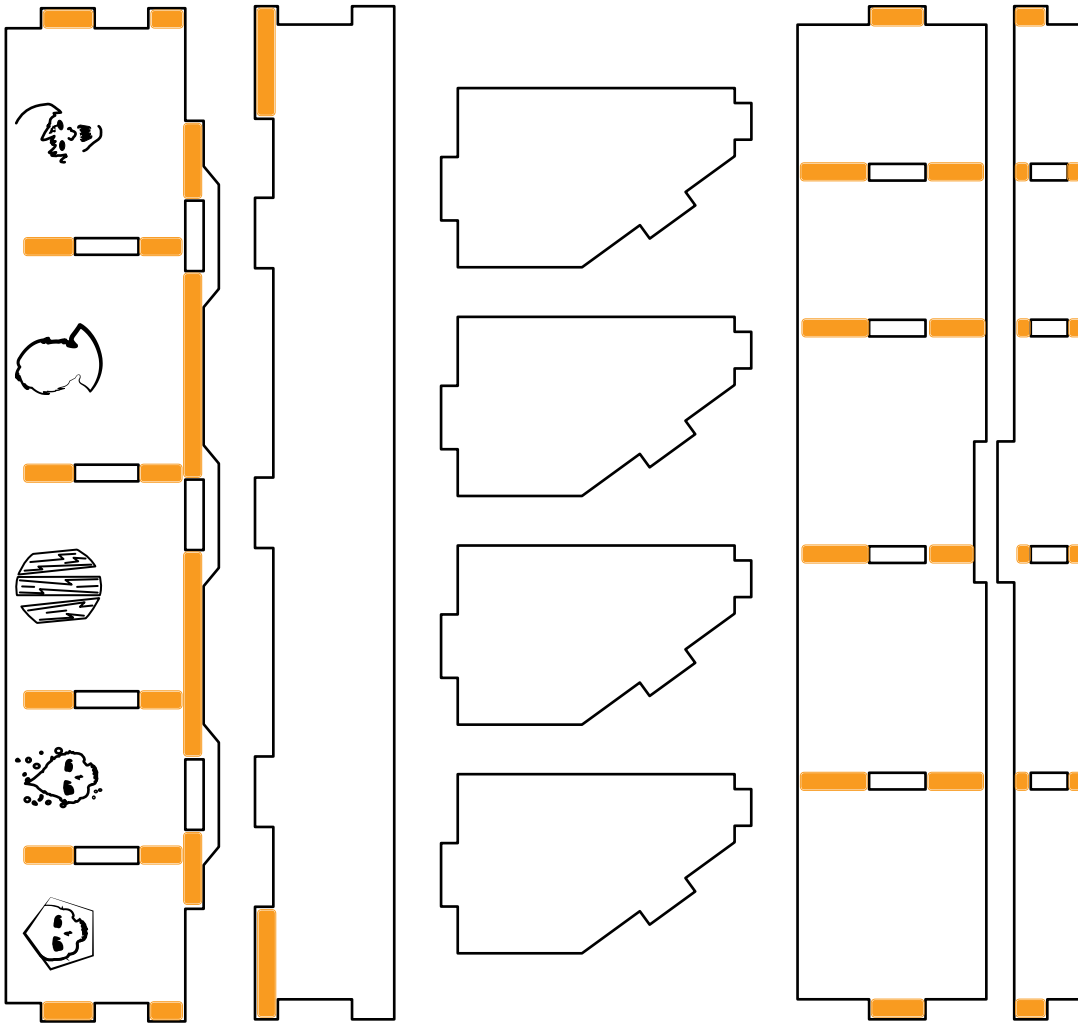
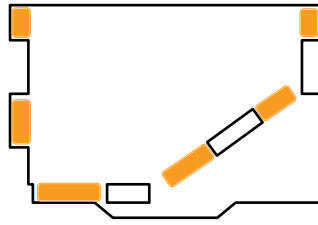




**QUICK » START INSERT™** FOR  
**DEAD OF WINTER: THE LONG NIGHT ®**



## Glue Locations:



This Quick Start Insert is compatible with Dead of Winter: The Long Night ® and its expansions. This is a non-licensed product. ALL RIGHTS RESERVED by their respective trademark holders. No challenge to any intellectual property rights is intended or implied by representations of compatibility and no endorsements of any of our products by any other company is implied or represented.



QUICK » START INSERT™ FOR  
DEAD OF WINTER: THE LONG NIGHT ®

## Layout in Box



This Quick Start Insert is compatible with Dead of Winter: The Long Night ® and its expansions. This is a non-licensed product. ALL RIGHTS RESERVED by their respective trademark holders. No challenge to any intellectual property rights is intended or implied by representations of compatibility and no endorsements of any of our products by any other company is implied or represented.