

ASSEMBLY INSTRUCTIONS FOR



less work, more game



BOARD GAME TITLE[®]

QUICK  START INSERT[™]

Castles of Burgundy[®] is a registered trademark of Ravensburger. Any mention of Castles of Burgundy[®] is for reference purposes only. ALL RIGHTS RESERVED by their respective trademark holders. No challenge to any intellectual property rights is intended or implied by representations of compatibility and no endorsements of any of our products by any other company is implied or represented.



QUICK»START INSERT™ FOR CASTLES OF BURGUNDY®

General Assembly Instructions

The following are basic instructions for any of the Quick Start Inserts:

- All parts are labeled with an Alphabet letter (A, B, C, etc.). First sort all pieces into piles by their letters before you begin to assemble.
- Layout the parts in the diagrams provided, to ensure you have all the parts
- Glue only the edges that come into contact with the wood (remove excess immediately)
- Allow 24 hours to dry before using

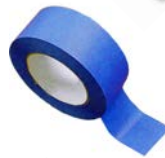
Tips & Tricks

- Some of the parts might need to be slightly sanded on the edges for a perfect fit.
- Sometimes tapping the pieces with a small amount of force (with a mallet) helps create a tighter fit.
- Taping the outside corners of the boxes helps it hold in place while the glue is drying.
- If you break a part, don't hesitate calling we always carry spares – you just need to cover shipping. (most spares can be send in an envelope, if so we don't charge for shipping)

Assembly Supplies



Beacon 527 or wood-glue
(we recommend supper-glue)



Painters blue tape
(painter's tape helps protect the finish)



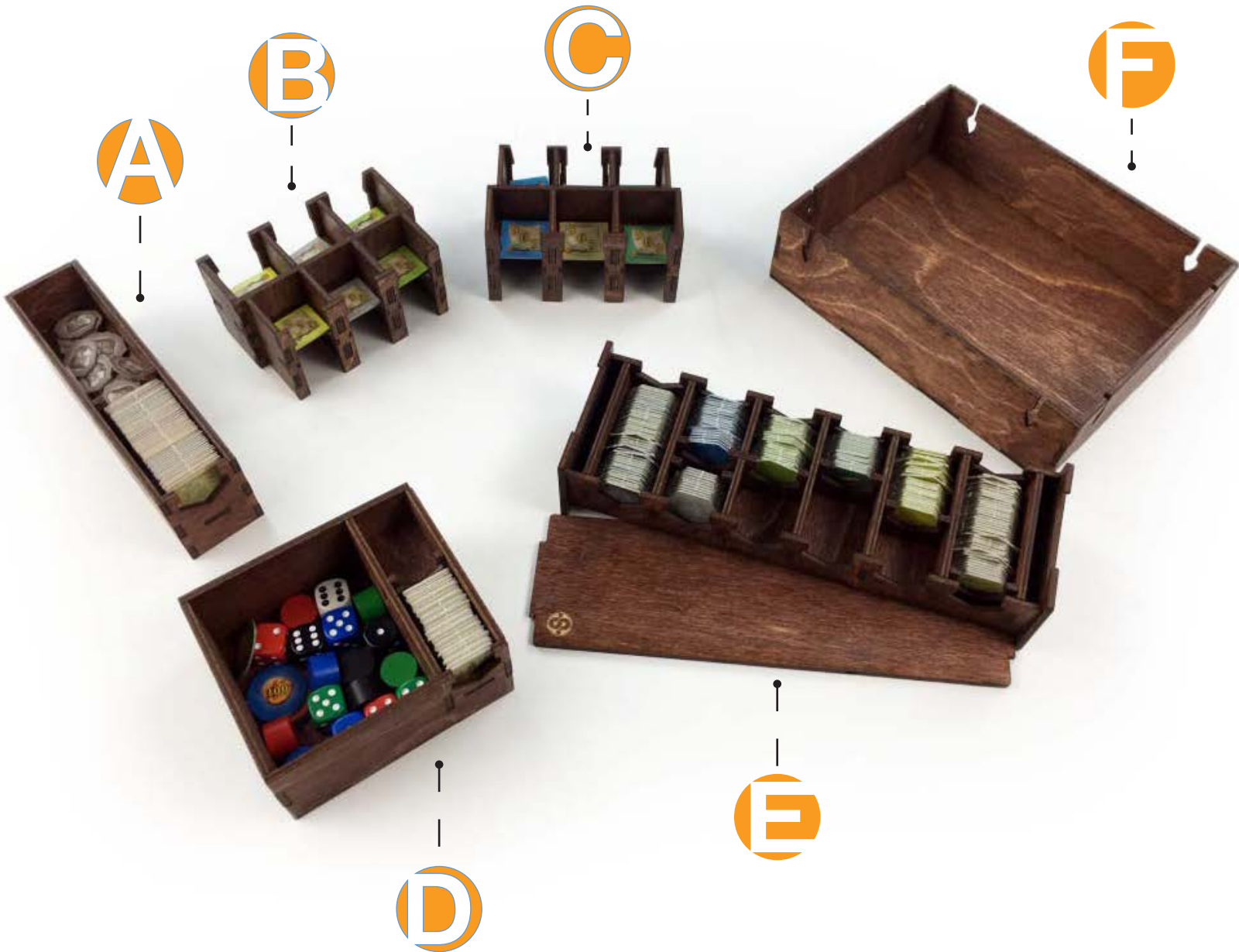
Rubber mallet
(or something to tap the pieces together)



Cotton swap/ Q-tip
(or something to wipe the excess glue)



QUICK»START INSERT™ FOR CASTLES OF BURGUNDY®

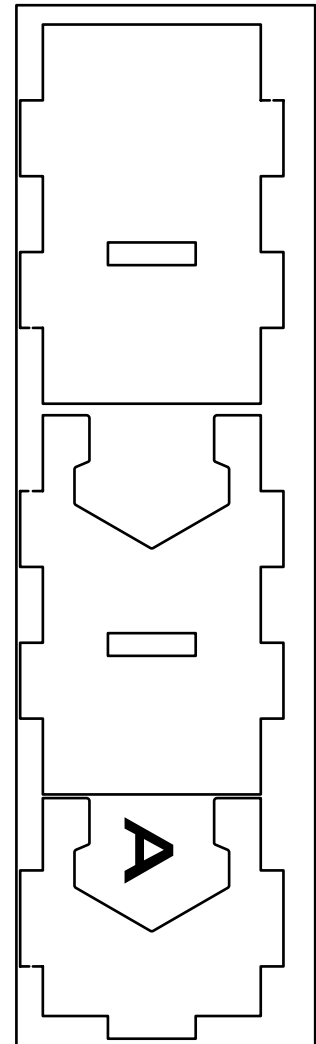
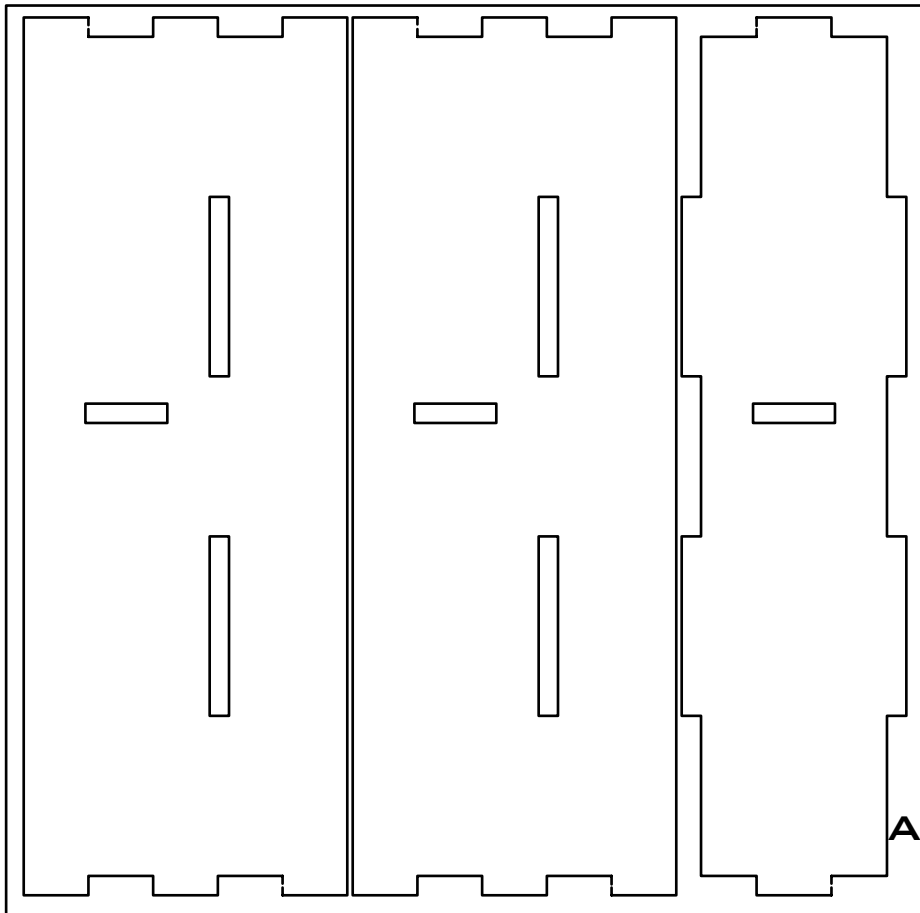


This Quick Start Insert is compatible with Castles of Burgundy® and its expansions. This is a non-licensed product. ALL RIGHTS RESERVED by their respective trademark holders. No challenge to any intellectual property rights is intended or implied by representations of compatibility and no endorsements of any of our products by any other company is implied or represented.



Sheet A2:

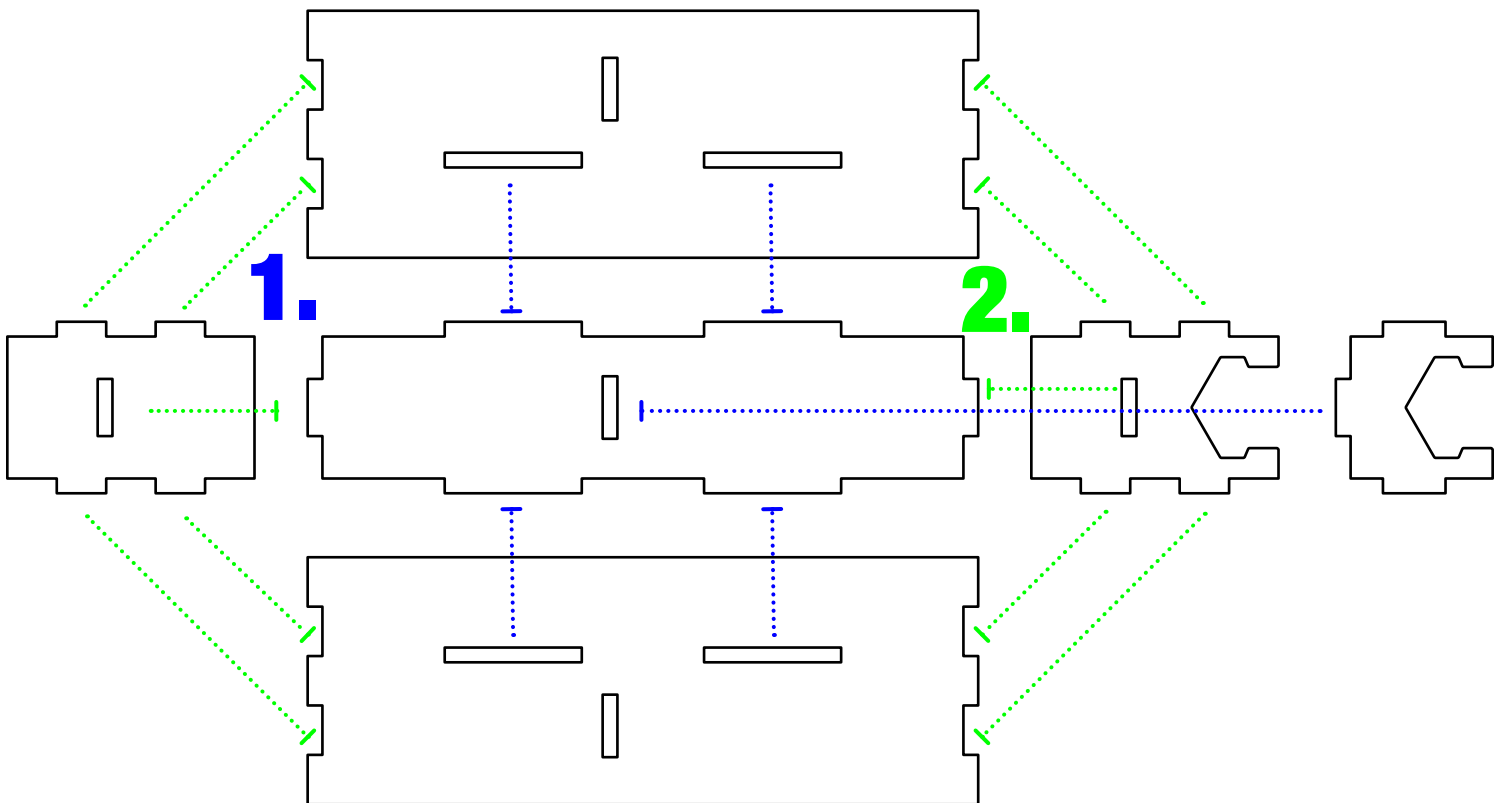
Sheet A1:





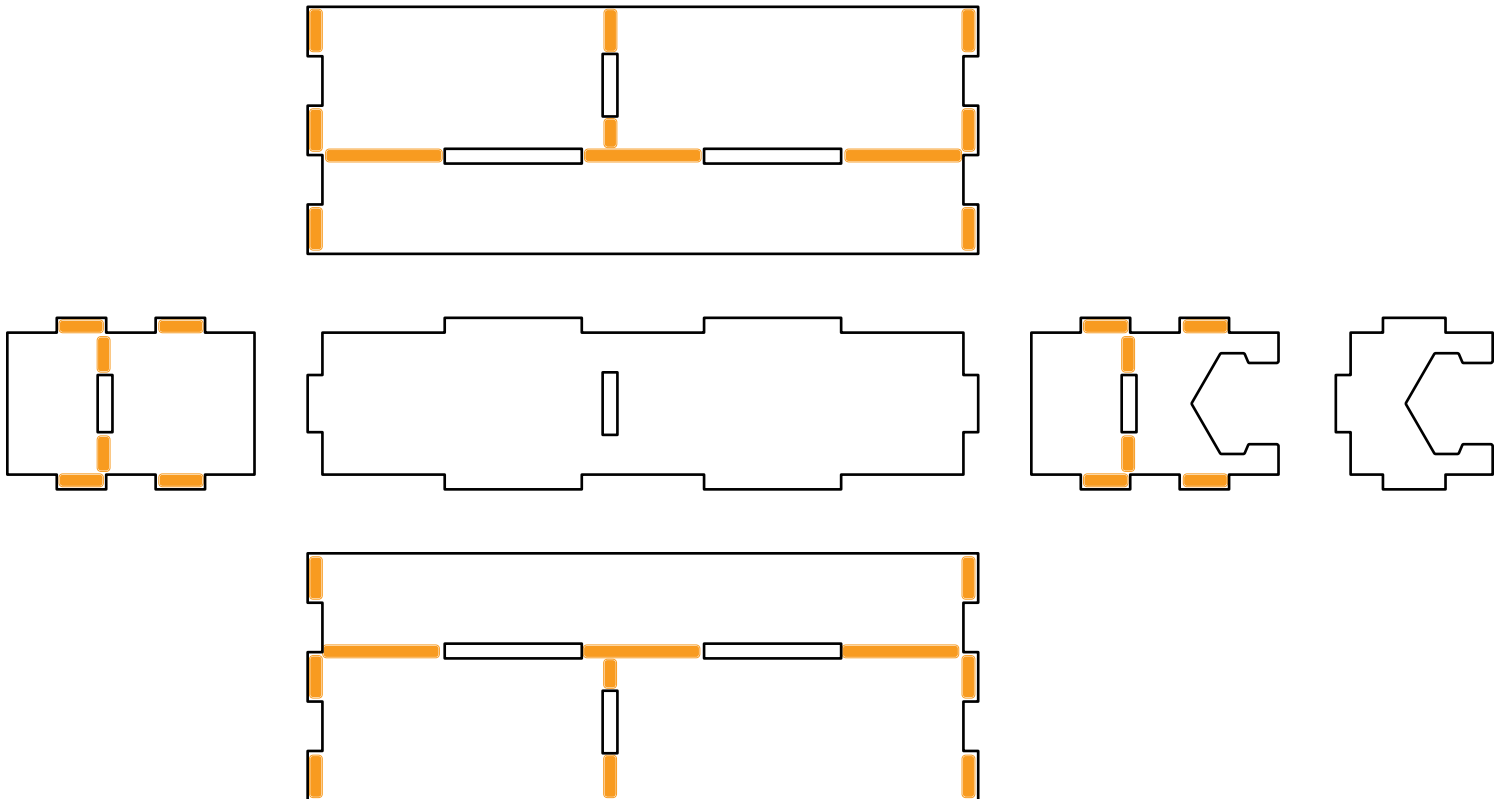
Recommended Assembly Sequence

1. Assemble all internal pieces prior to inserting any into base plate
2. Insert all internal pieces into base plate



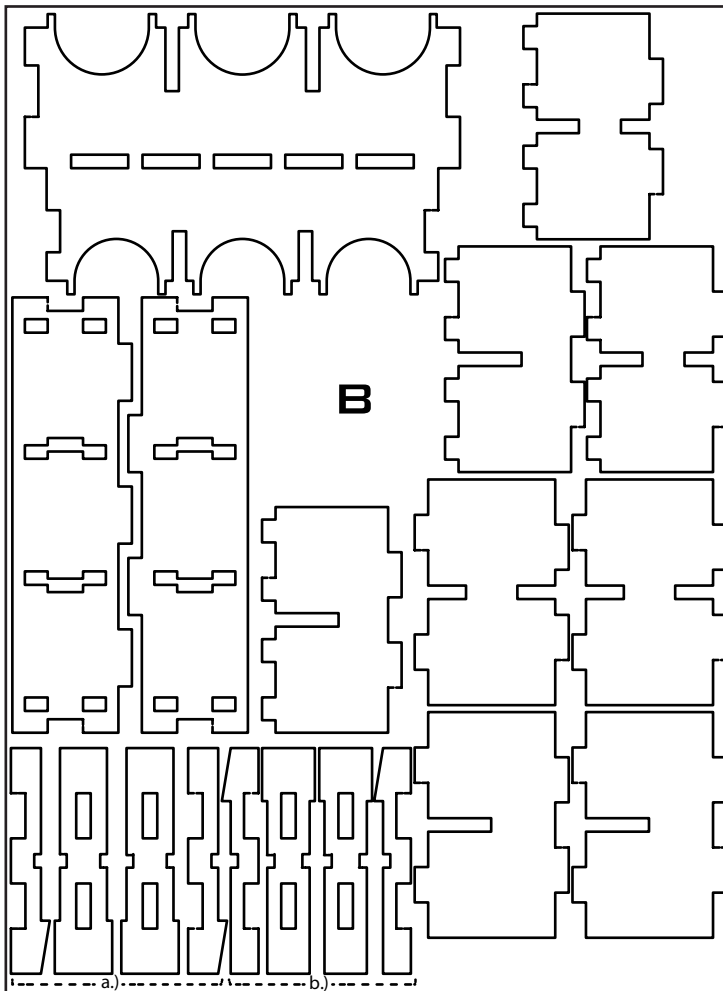


Glue Locations:

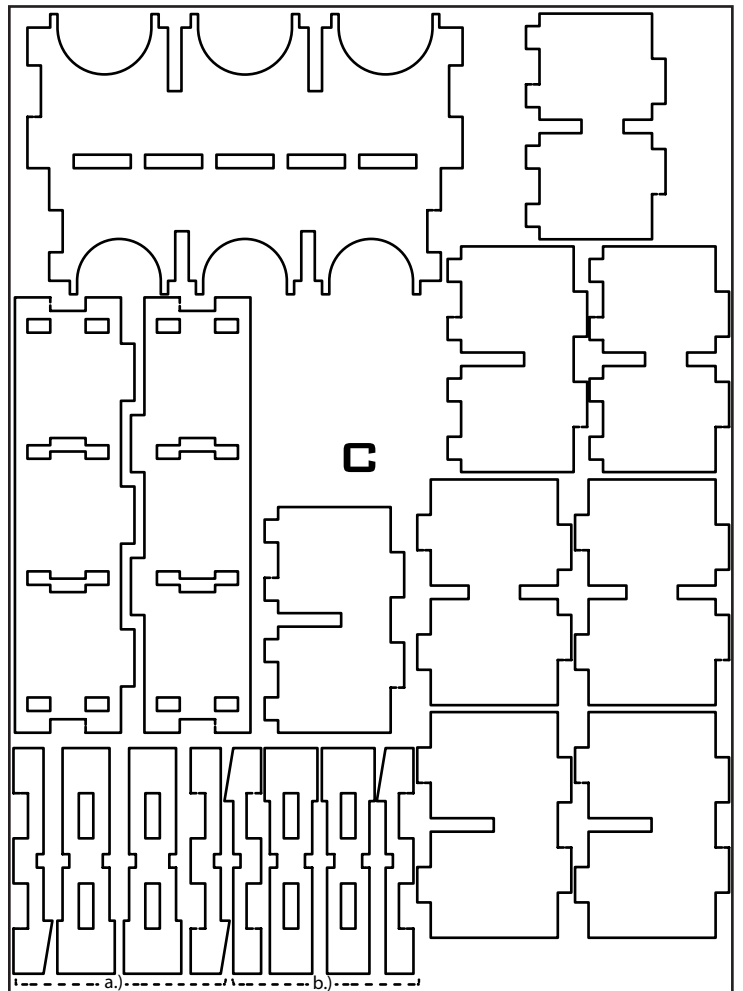




Sheet B1:



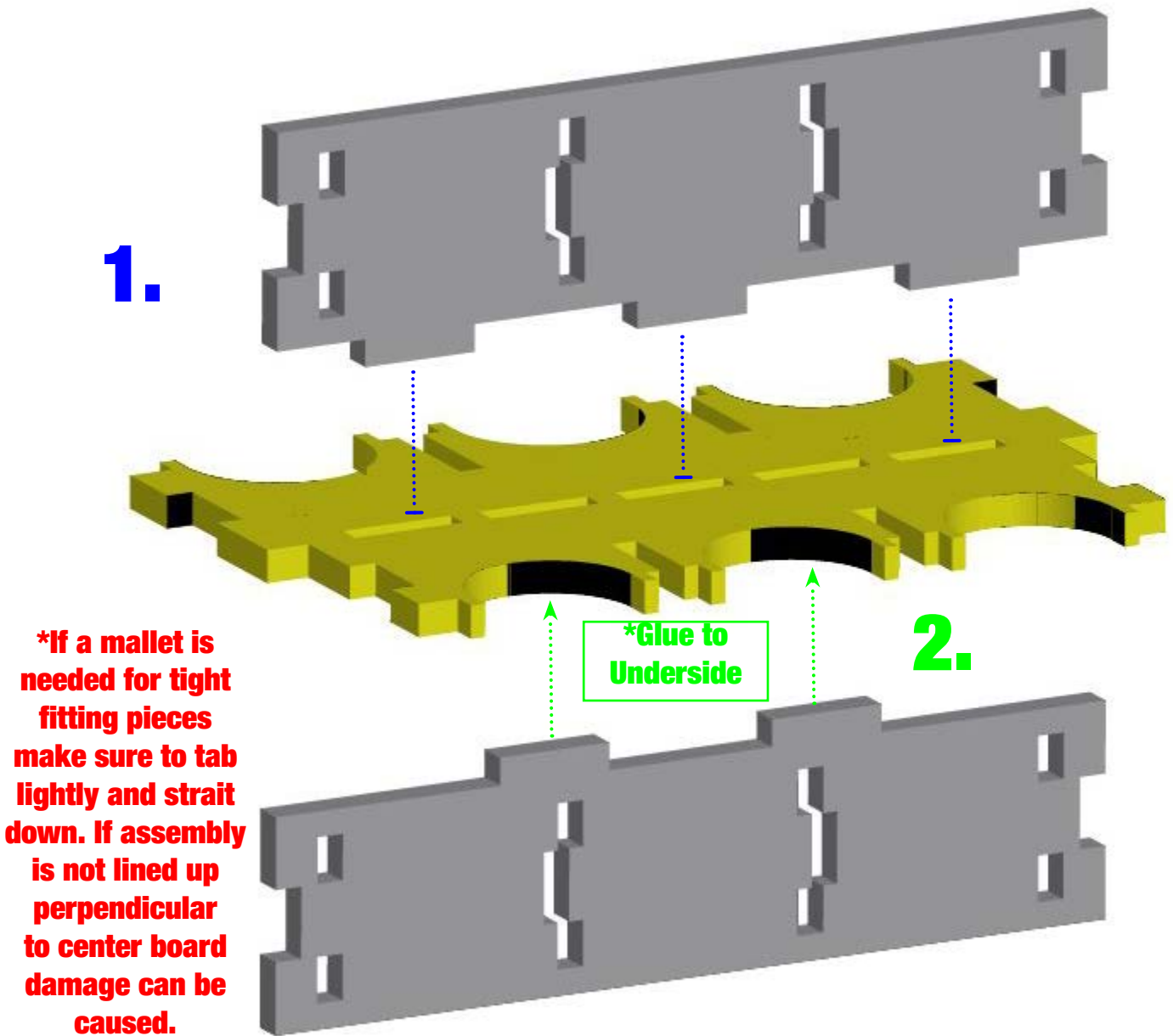
Sheet C1:



Recommended Assembly Sequence

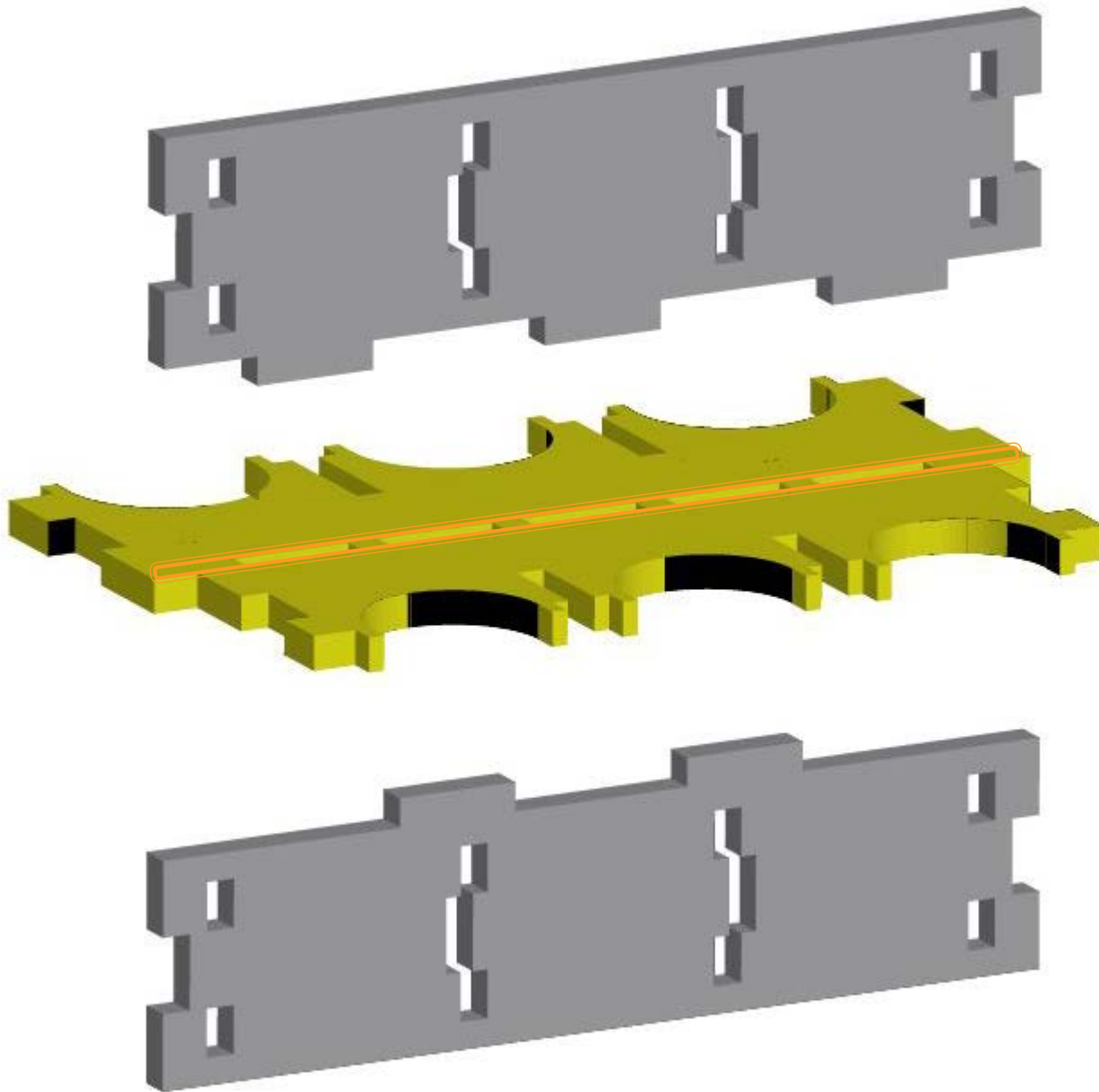
NOTE: Glue is option for internal pieces

1. Glue and Assemble top board *
2. Glue and Assemble bottom board *





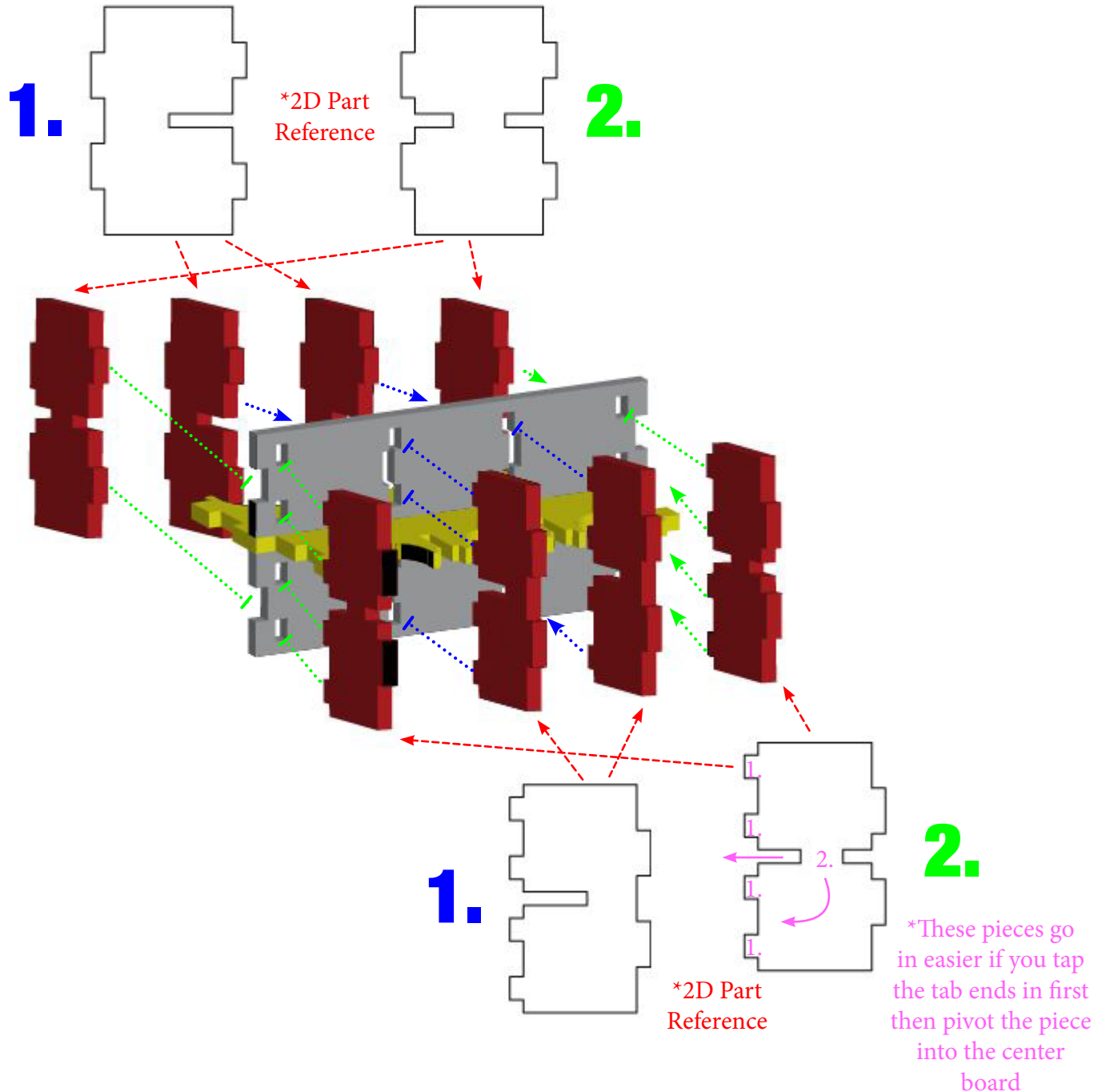
Glue Locations:



***Glue
between
holes for first
board, then flip
over assembly
and glue
both between
holes and on
bottoms of
previous tabs**

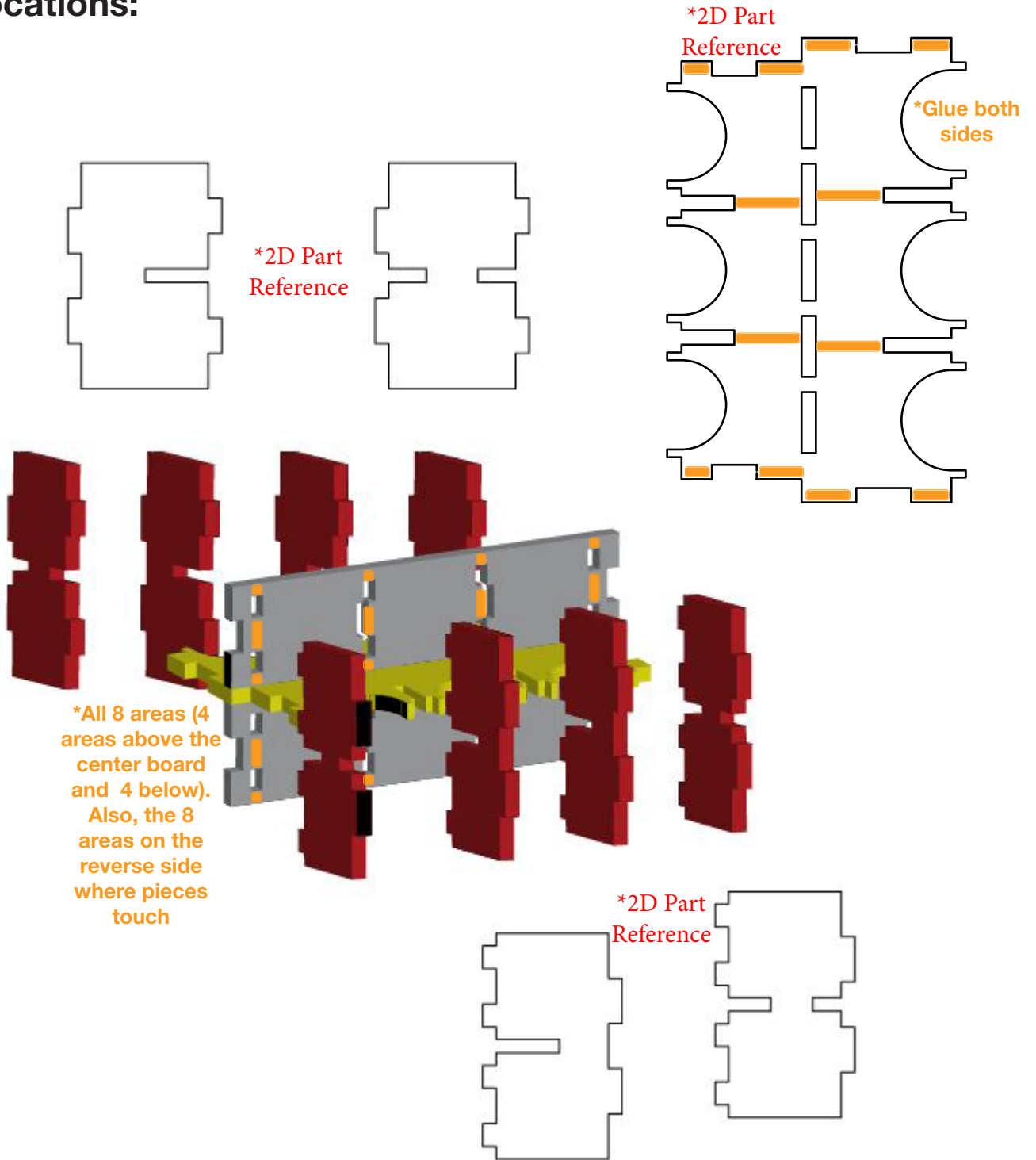
Recommended Assembly Sequence

1. Glue and Slide on 4 middle pieces
2. Glue and Attach/Pivot* side pieces





Glue Locations:

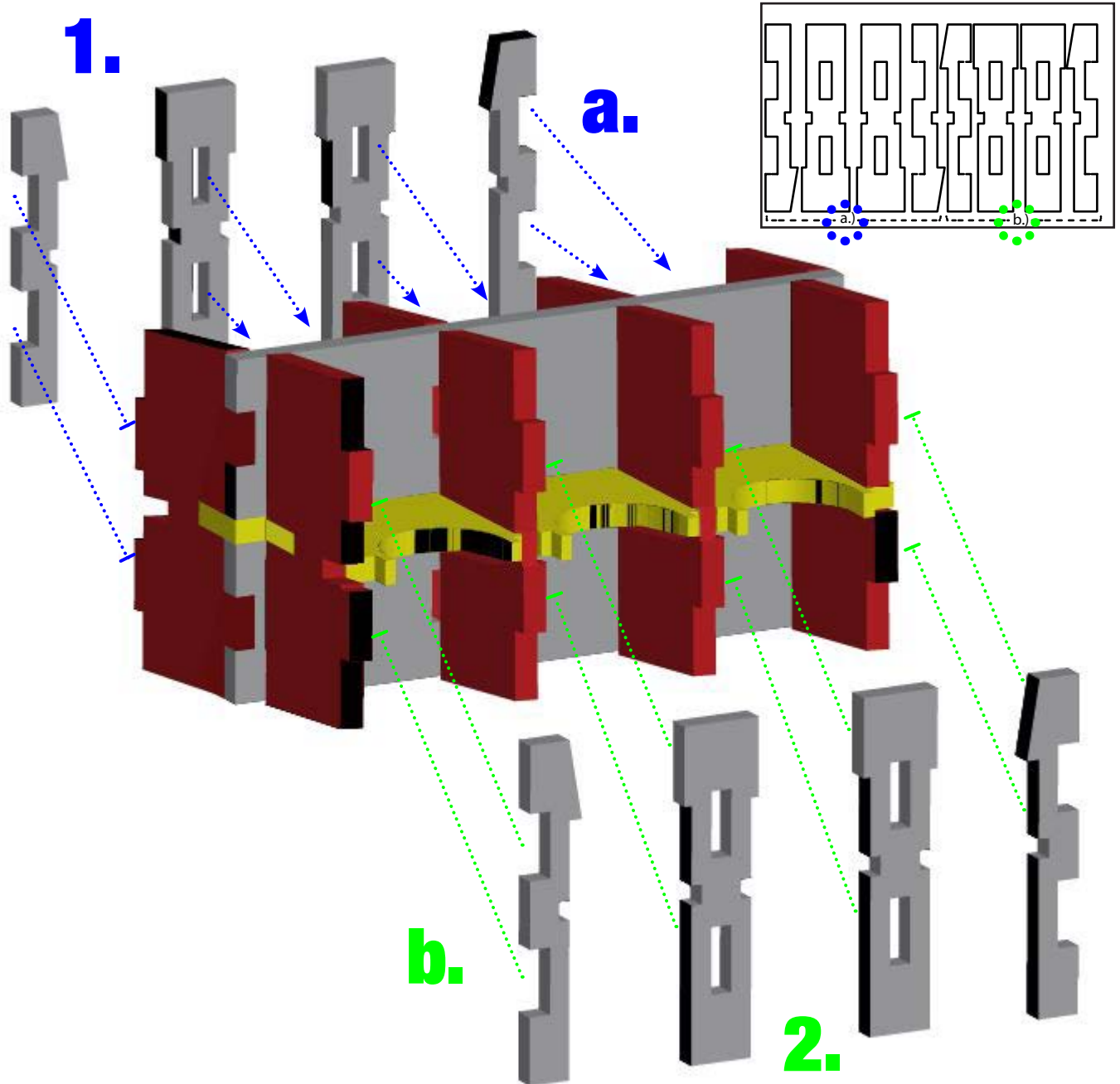




Recommended Assembly Sequence

1. Punch the 4 pieces labeled with the letter “a.)” and Glue and Assemble them to the wider side of the assembly
2. Punch the 4 pieces labeled with the letter “b.)” and Glue and Assemble them to the narrow side of the assembly

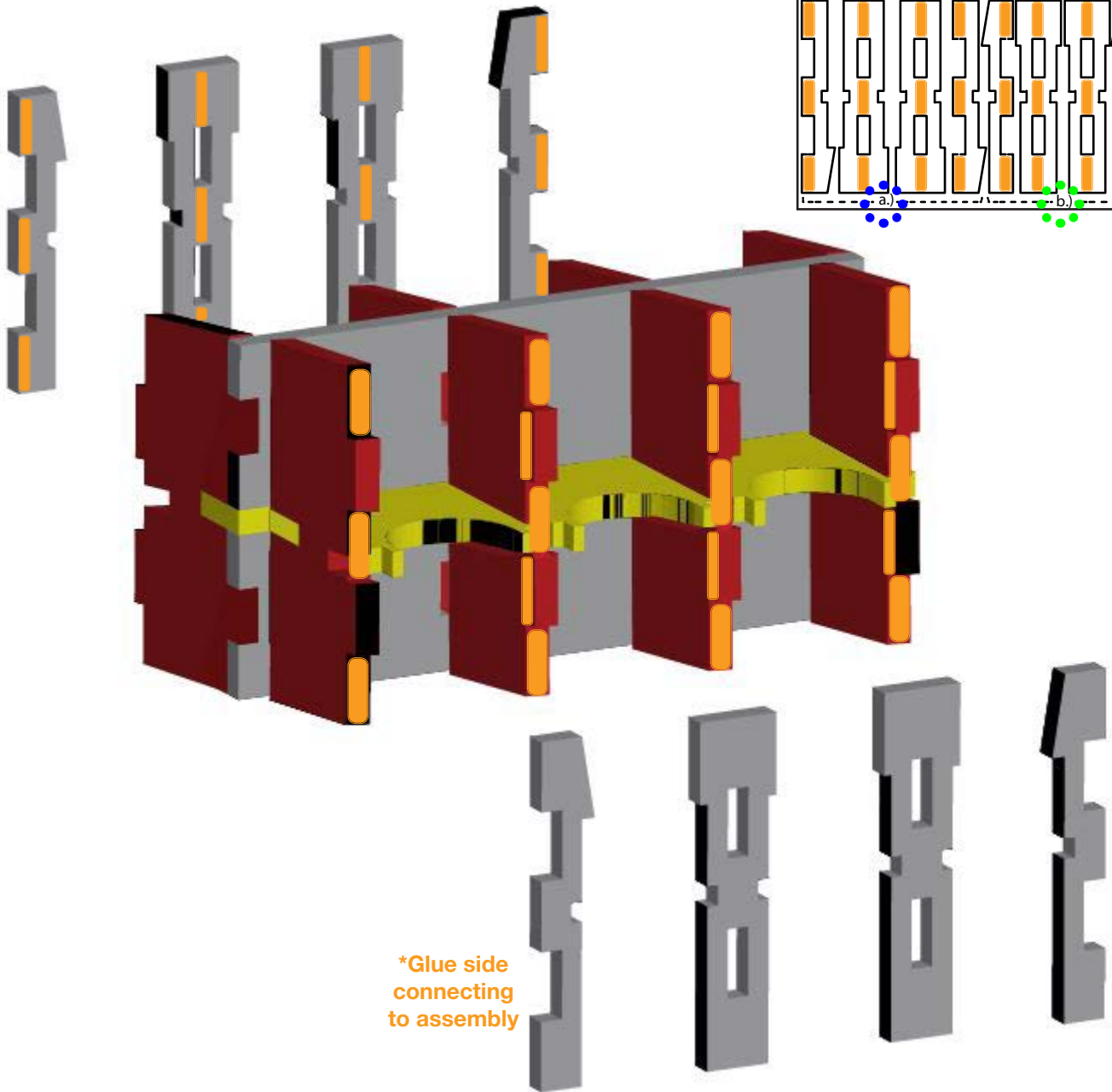
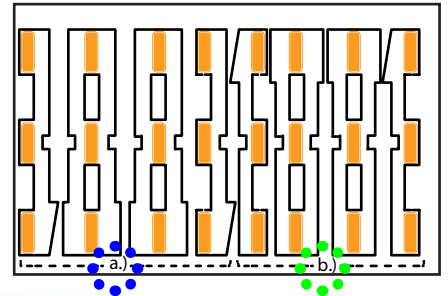
*2D Part Reference





Glue Locations:

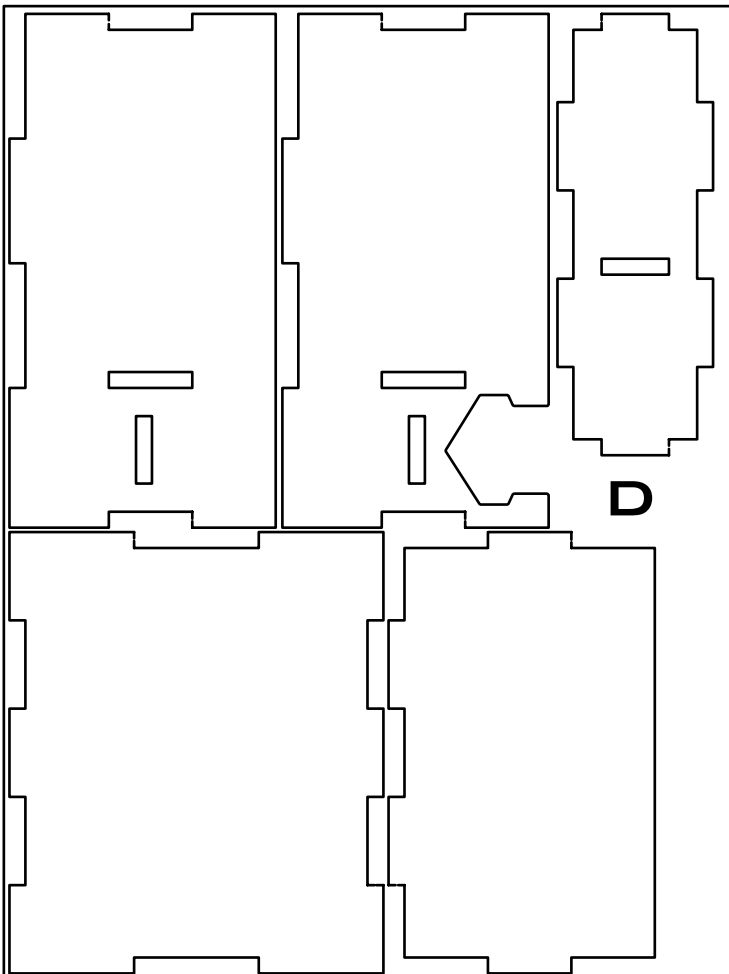
*2D Part Reference



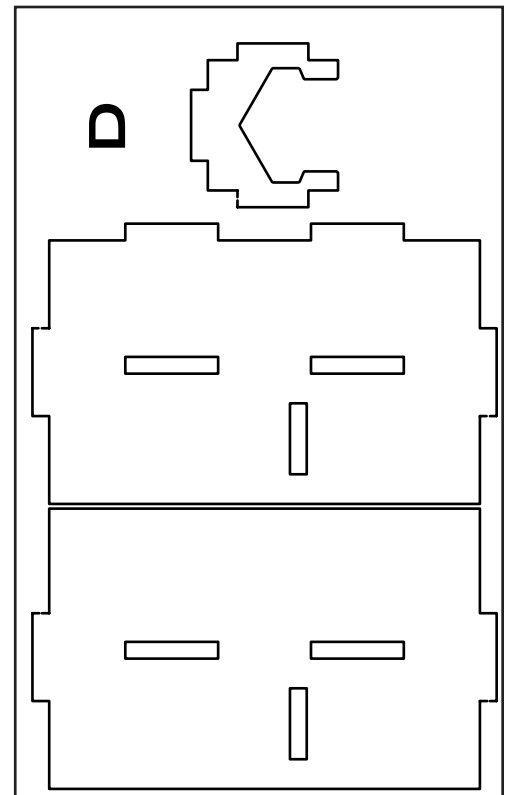
*Glue side connecting to assembly



Sheet D1:



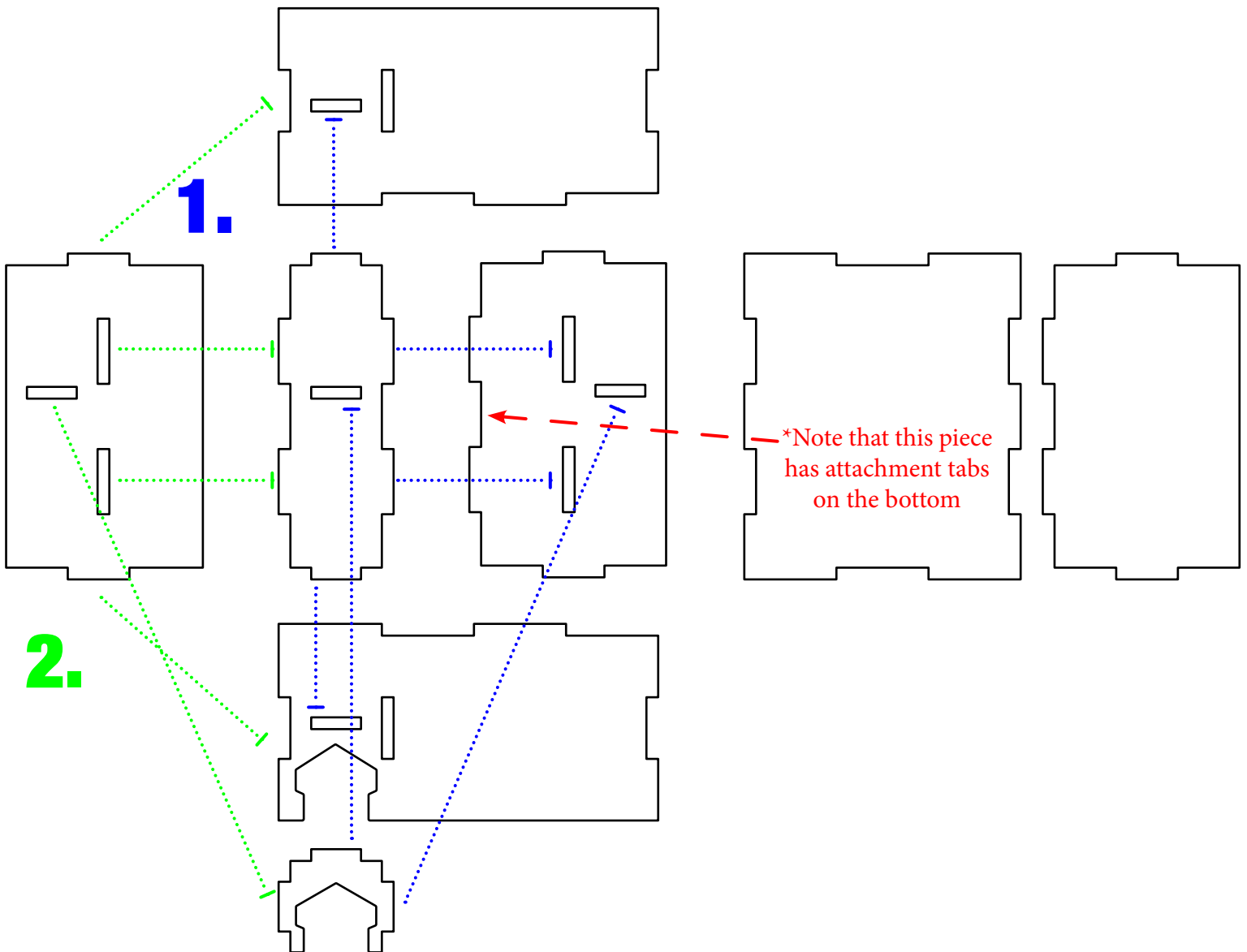
Sheet D2:





Recommended Assembly Sequence

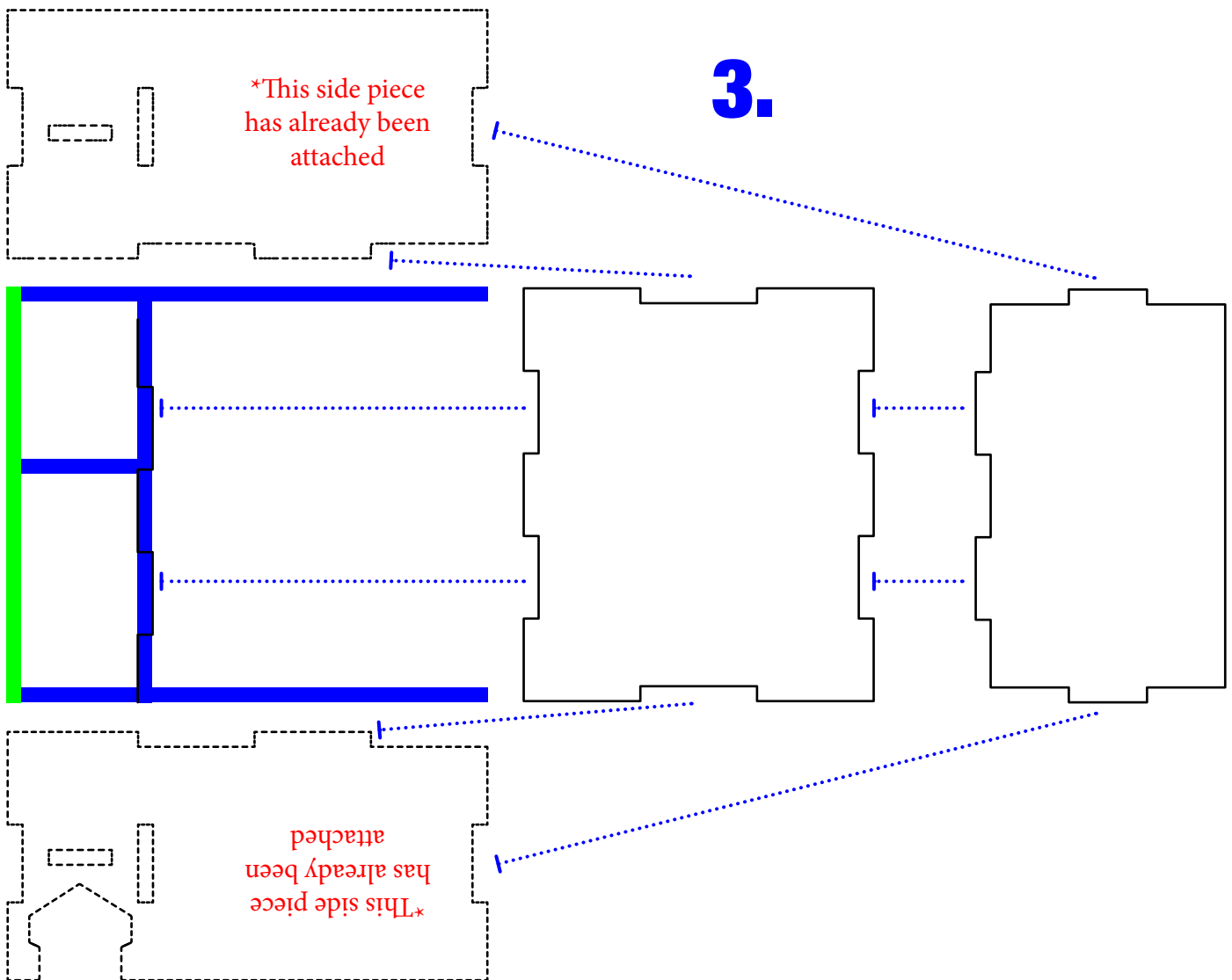
1. Glue and Assemble middle pieces. *
2. Glue and Assemble left side
3. Next Page





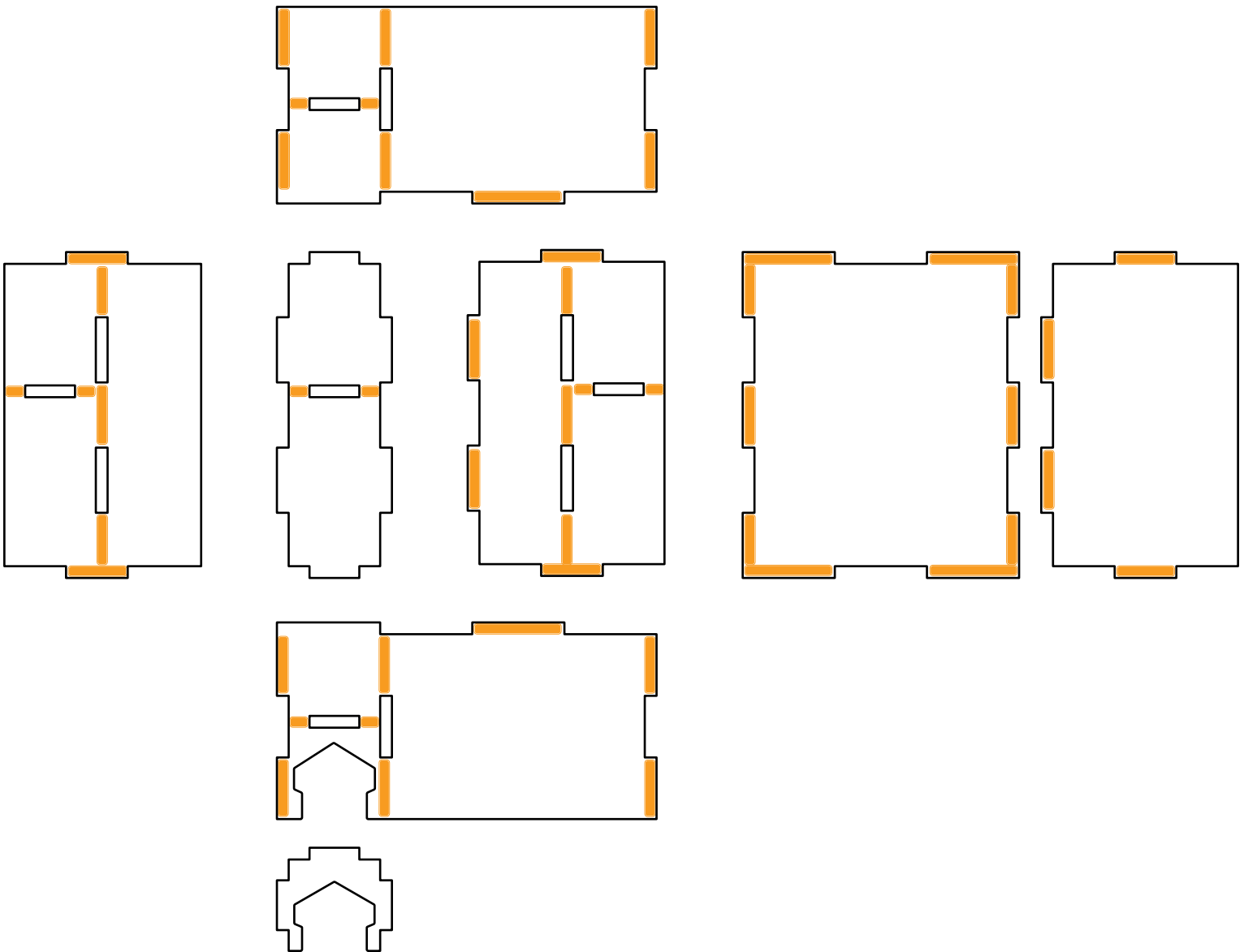
Recommended Assembly Sequence

3. Glue and Assemble bottom and right side



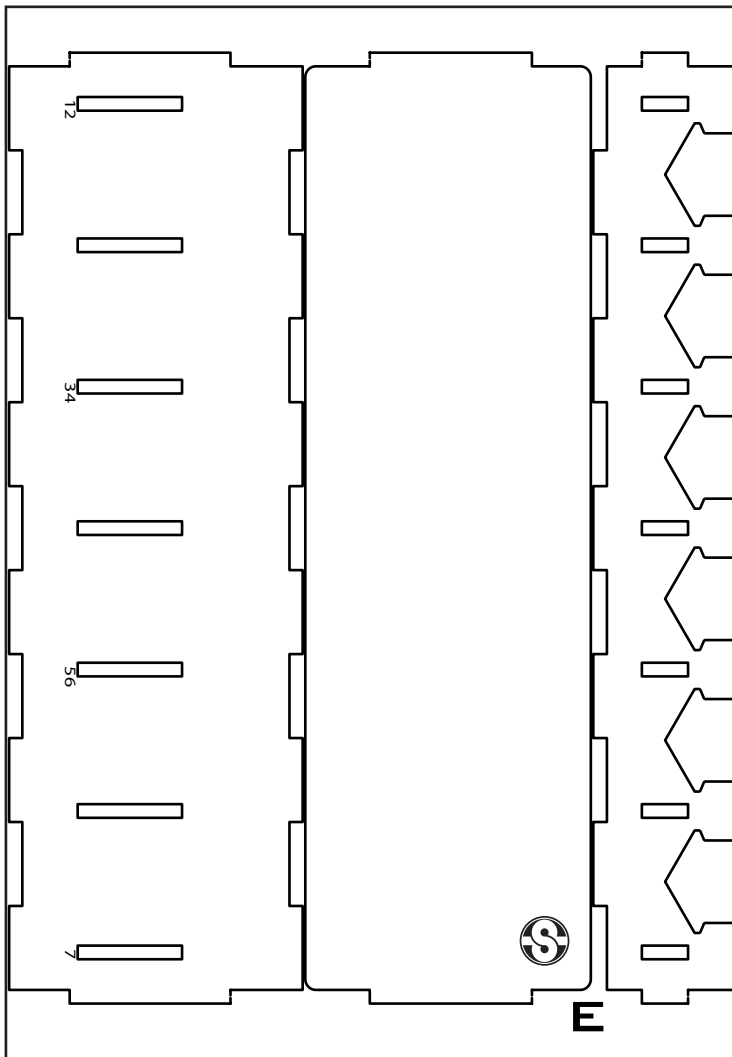


Glue Locations:

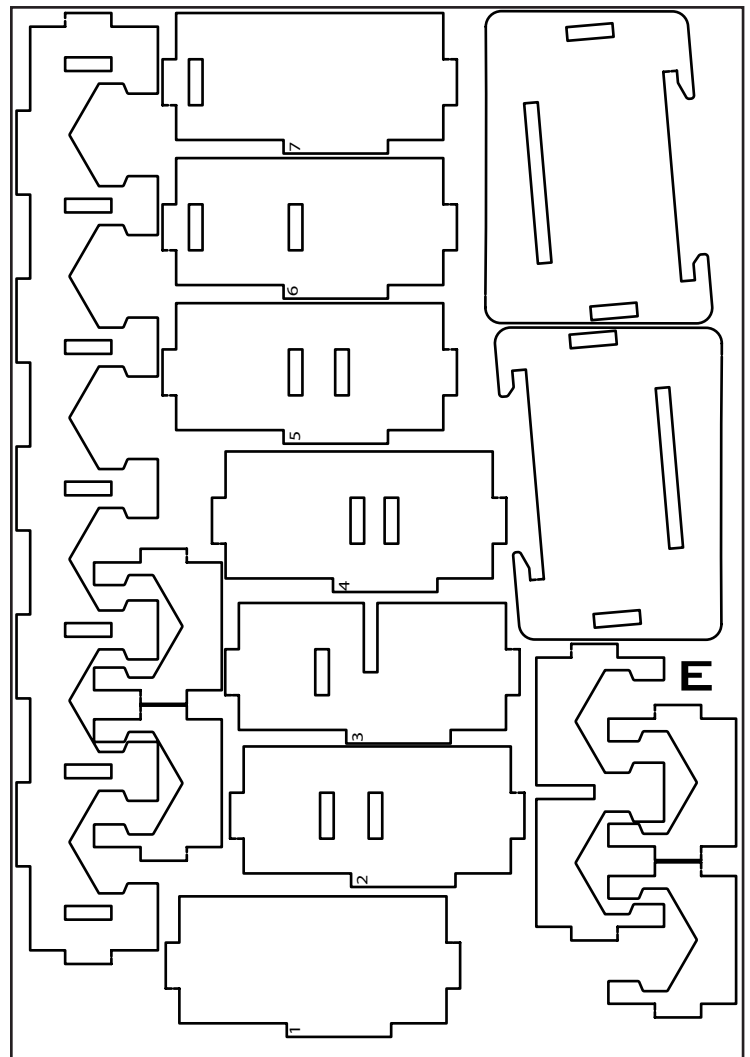




Sheet E1:



Sheet E2:



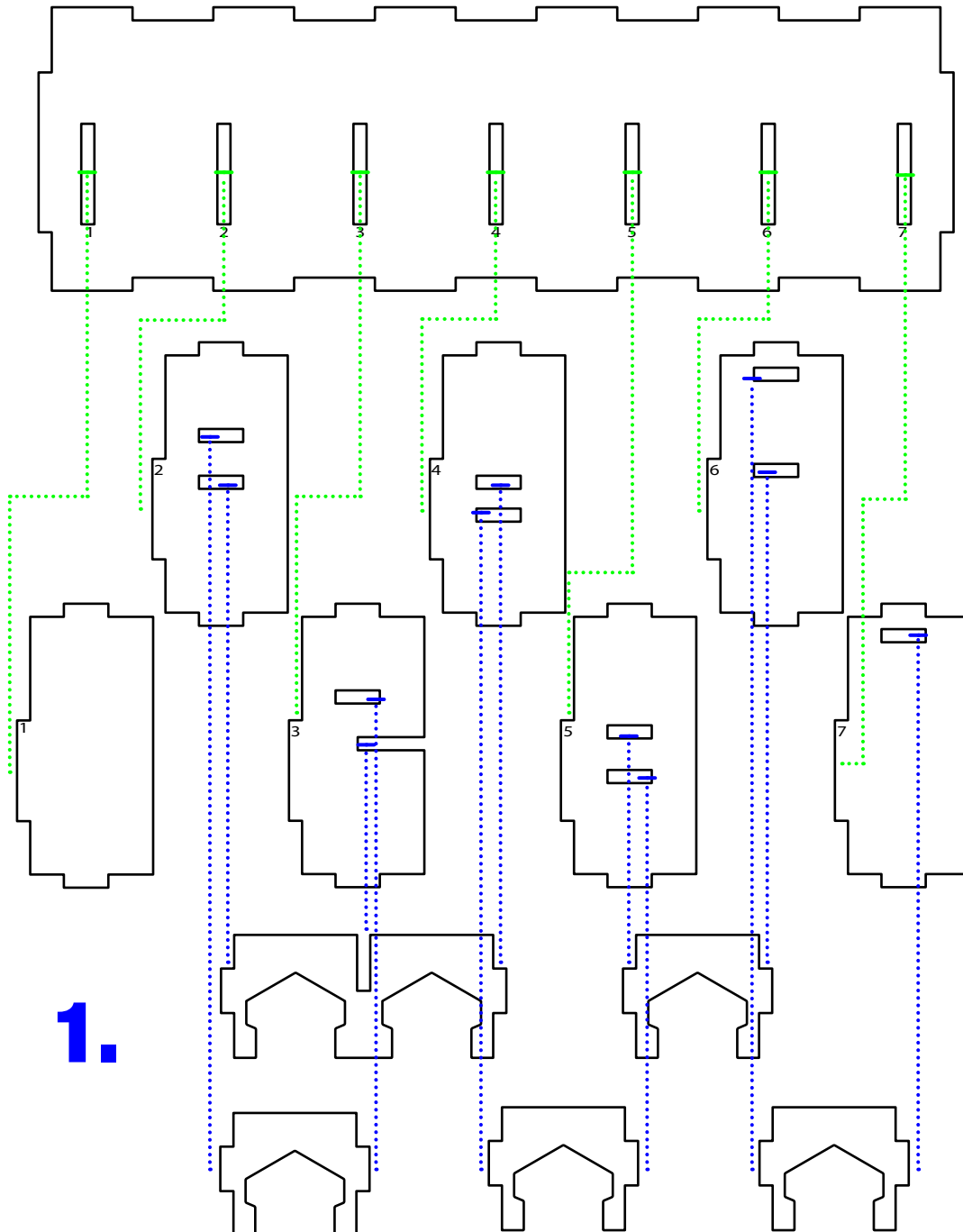


Recommended Assembly Sequence

NOTE: Glue is option for internal pieces

1. Assemble all gapping tabs into divider tabs
2. Glue and Assemble Gapping/Divider tabs into base

2.

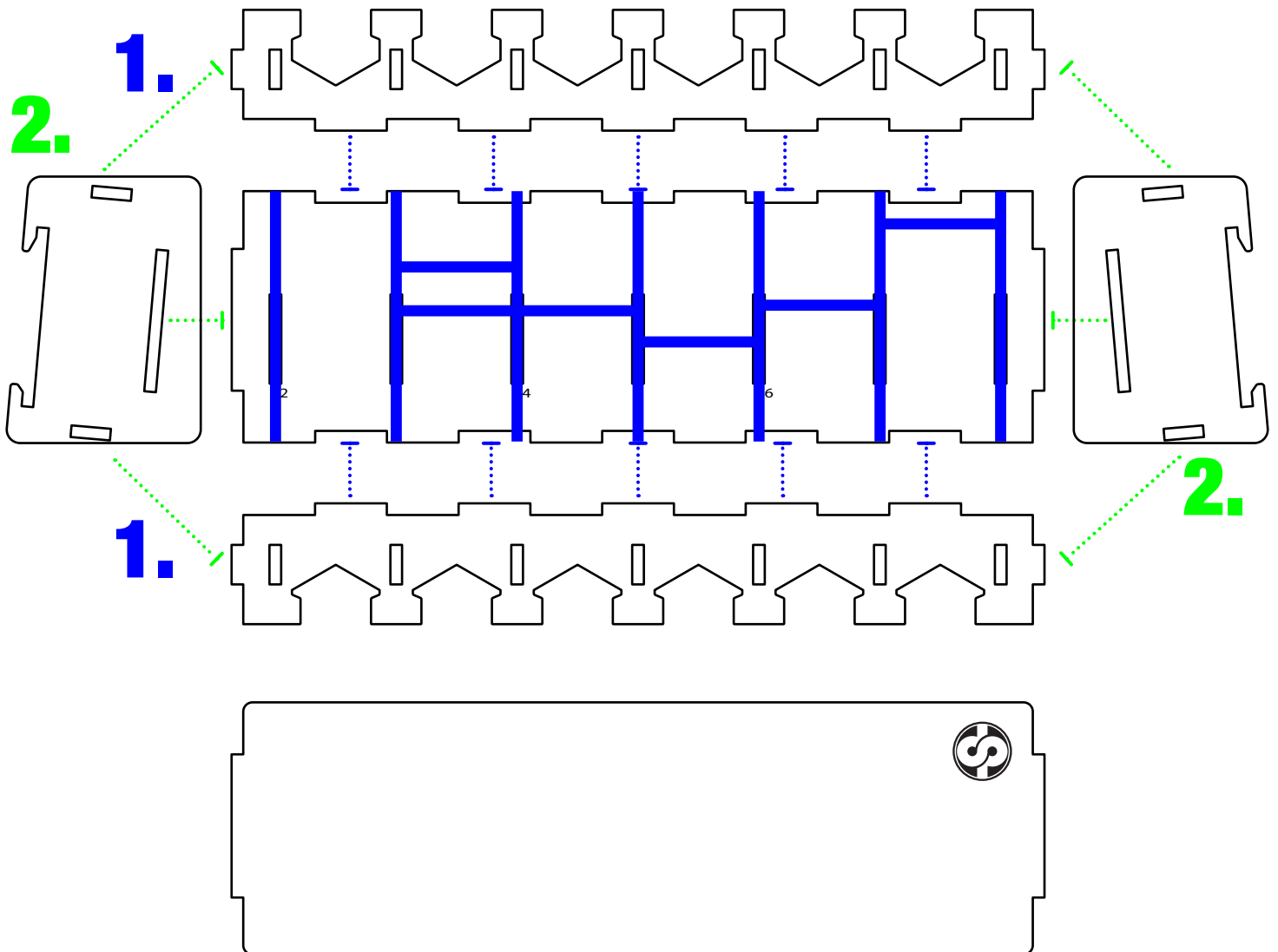


1.



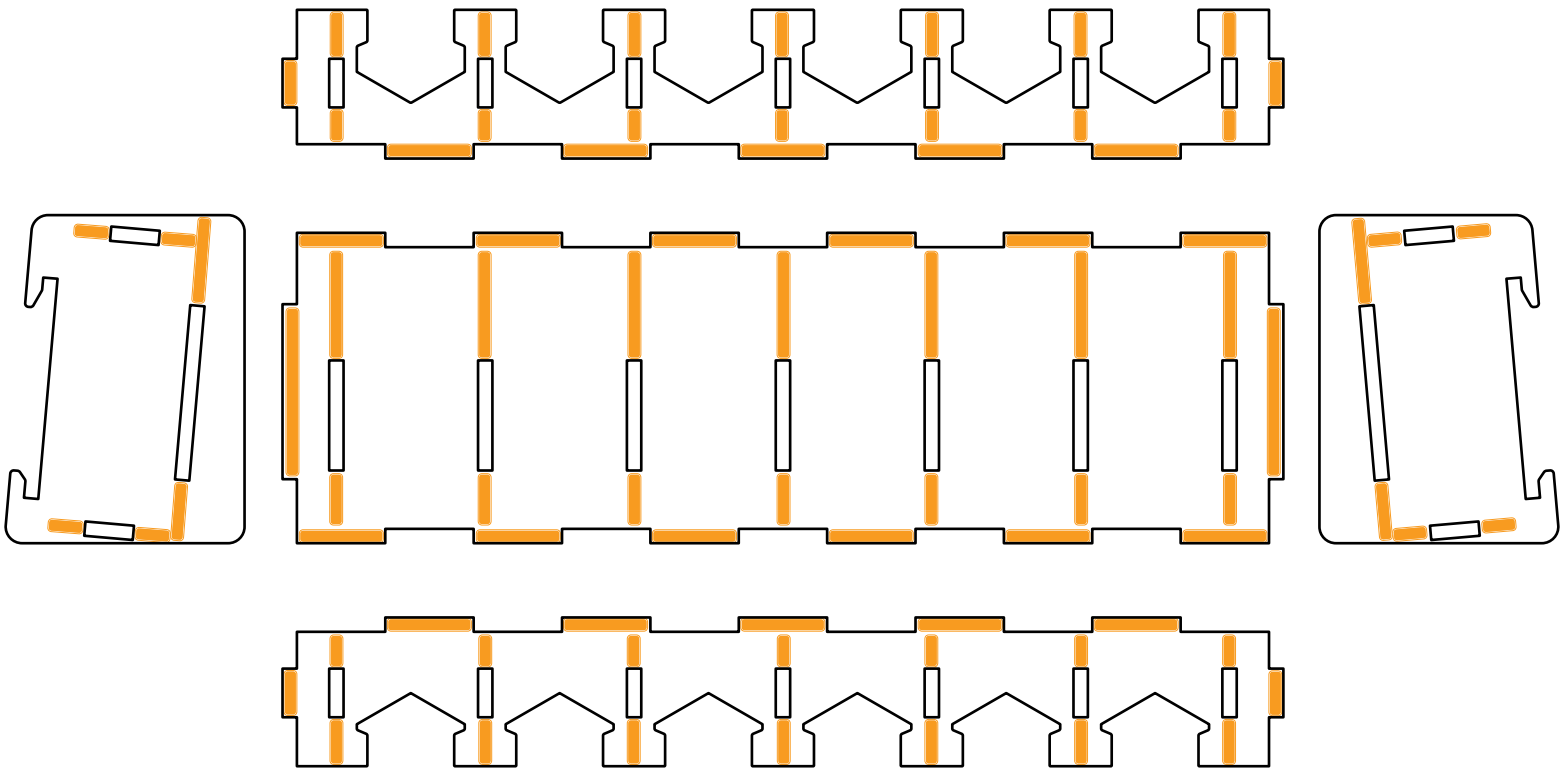
Recommended Assembly Sequence

1. Glue and Assemble Back and Front Pieces
2. Glue and Assemble Side pieces

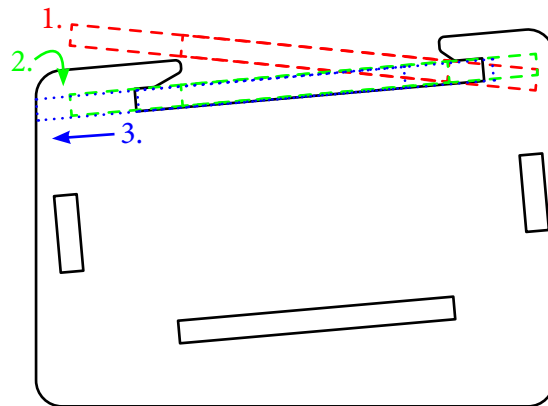




Glue Locations:



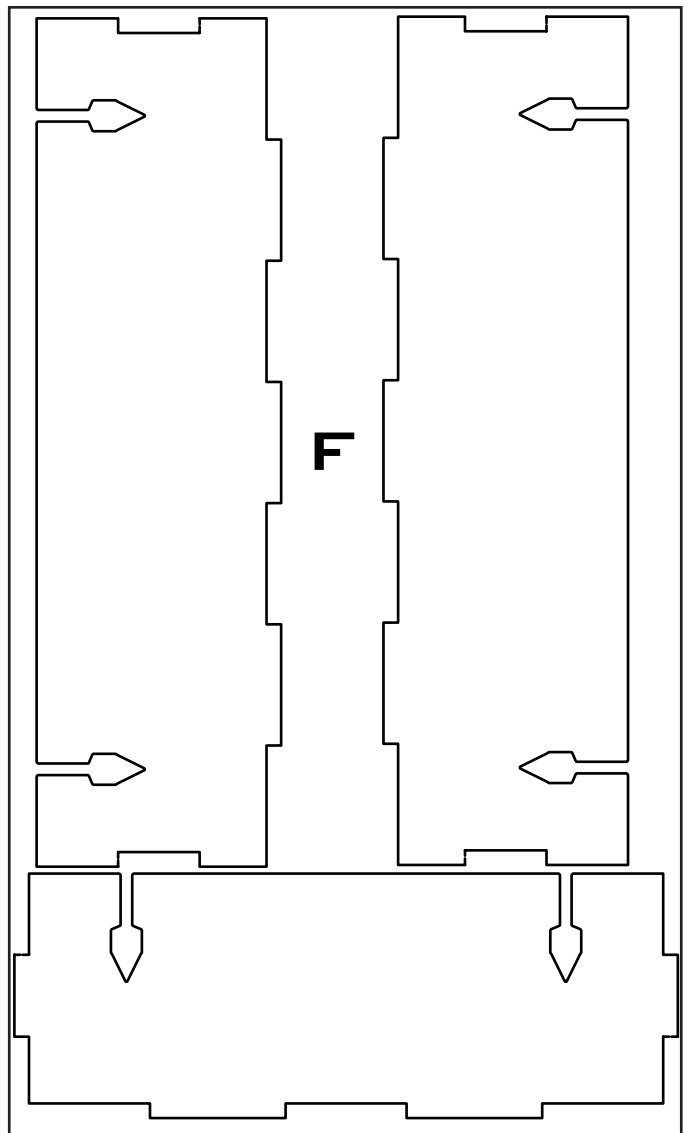
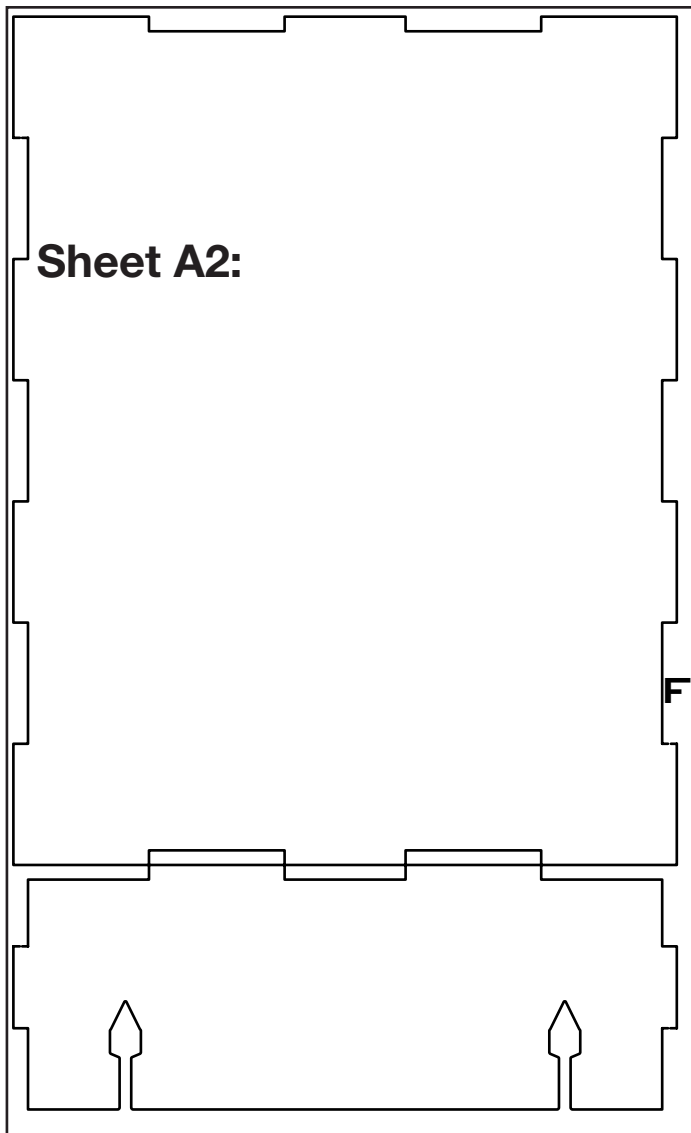
Lid Closing Method





Sheet F1:

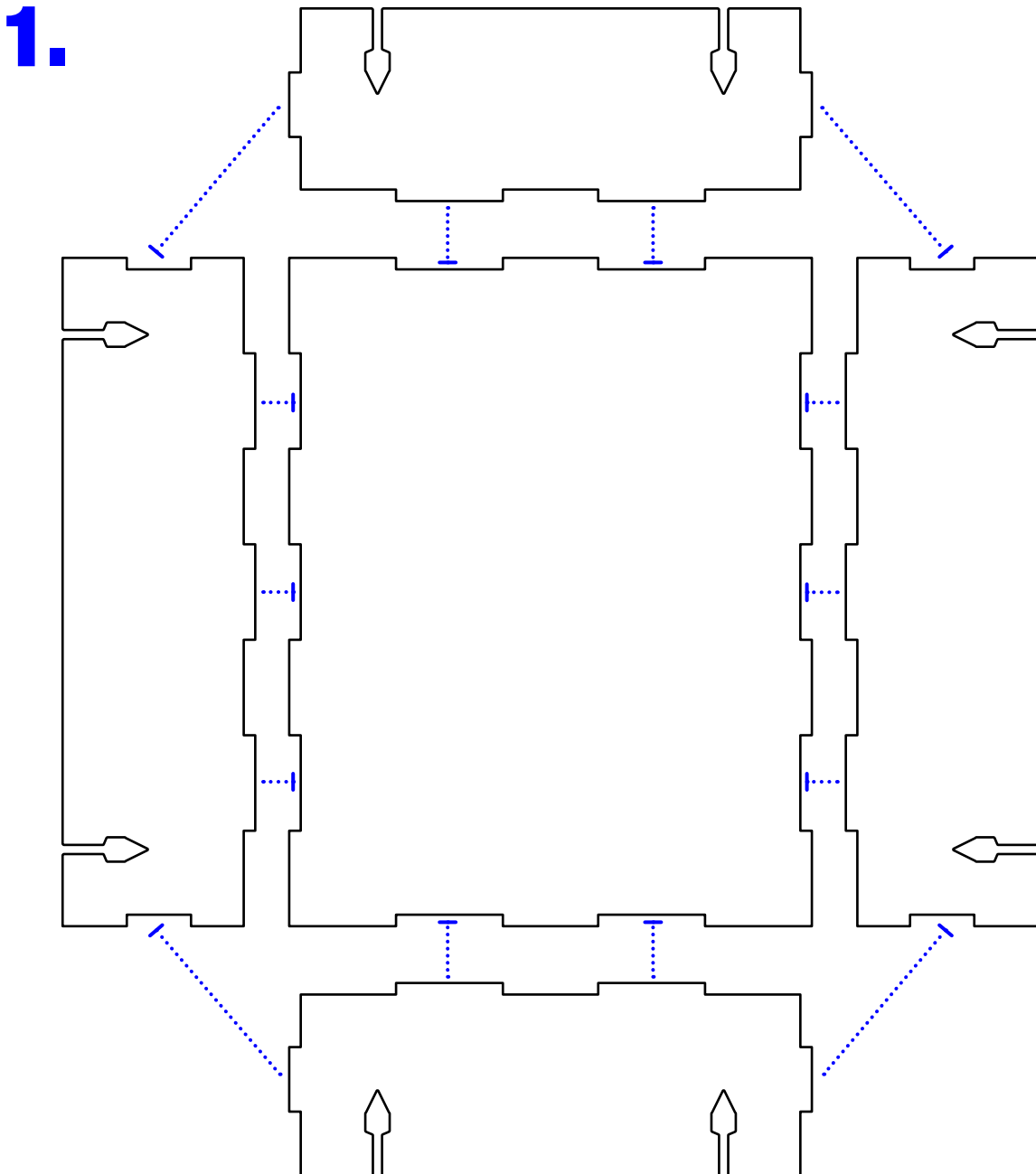
Sheet F2:





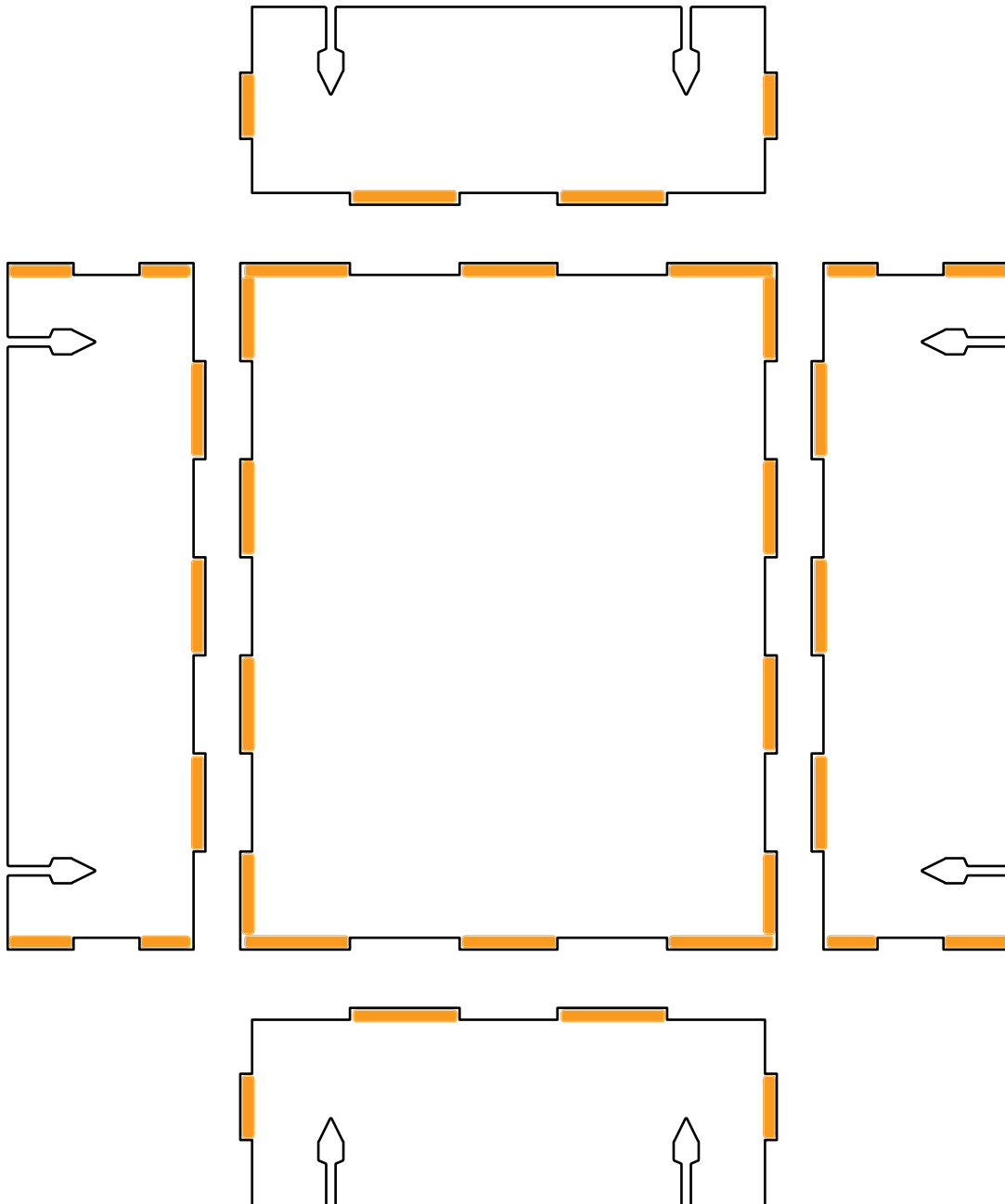
Recommended Assembly Sequence

1. Glue and Assemble Sides to Base





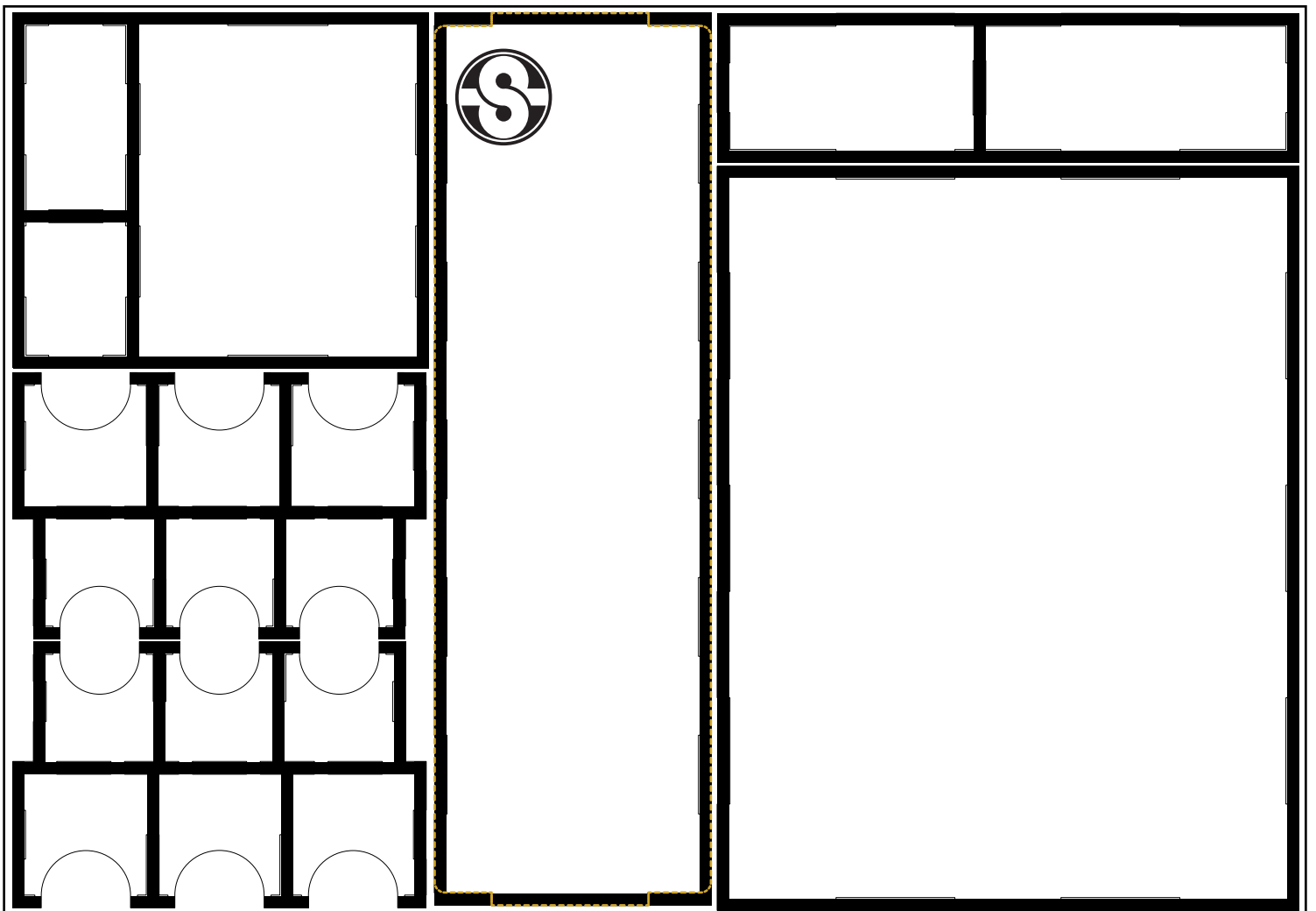
Glue Locations:





QUICK START INSERT™ FOR CASTLES OF BURGUNDY®

Layout:



This Quick Start Insert is compatible with Castles of Burgundy® and its expansions. This is a non-licensed product. ALL RIGHTS RESERVED by their respective trademark holders. No challenge to any intellectual property rights is intended or implied by representations of compatibility and no endorsements of any of our products by any other company is implied or represented.