

ASSEMBLY INSTRUCTIONS FOR



less work, more game



CRY HAVOC[®]

QUICK START INSERT[™]

Cry Havoc[®] is a registered trademark of Portal Games. Any mention of Cry Havoc[®] is for reference purposes only. ALL RIGHTS RESERVED by their respective trademark holders. No challenge to any intellectual property rights is intended or implied by representations of compatibility and no endorsements of any of our products by any other company is implied or represented.



QUICK»START INSERT™ FOR CRY HAVOC®

General Assembly Instructions

The following are basic instructions for any of the Quick Start Inserts:

- All panels are labeled with an Alphabet letter (A, B, C, etc.). First sort all panels into piles by their letters before you begin to assemble.
- Layout the parts in the diagrams provided, to ensure you have all the parts
- Glue only the edges that come into contact with the wood (remove excess immediately)
- Allow 24 hours to dry before using

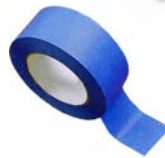
Tips & Tricks

- Some of the parts might need to be slightly sanded on the edges for a perfect fit.
- Sometimes tapping the pieces with a small amount of force (with a mallet) helps create a tighter fit.
- Taping the outside corners of the boxes helps it hold in place while the glue is drying.
- If you break a part, don't hesitate calling we always carry spares – you just need to cover shipping. (most spares can be send in an envelope, if so we don't charge for shipping)

Assembly Supplies



Beacon 527 or wood-glue
(we recommend supper-glue)



Painters blue tape
(painter's tape helps protect the finish)



Rubber mallet
(or something to tap the pieces together)



Cotton swap/ Q-tip
(or something to wipe the excess glue)



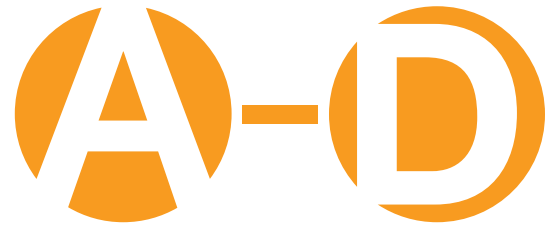
QUICK START INSERT™ FOR CRY HAVOC®



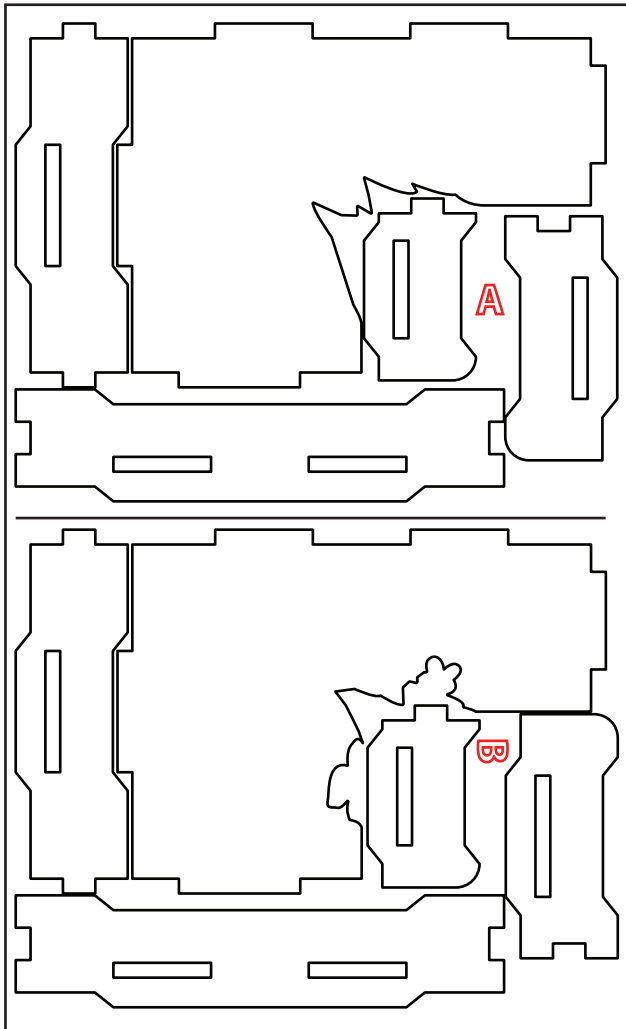
This Quick Start Insert is compatible with Cry Havoc® and its expansions. This is a non-licensed product. ALL RIGHTS RESERVED by their respective trademark holders. No challenge to any intellectual property rights is intended or implied by representations of compatibility and no endorsements of any of our products by any other company is implied or represented.



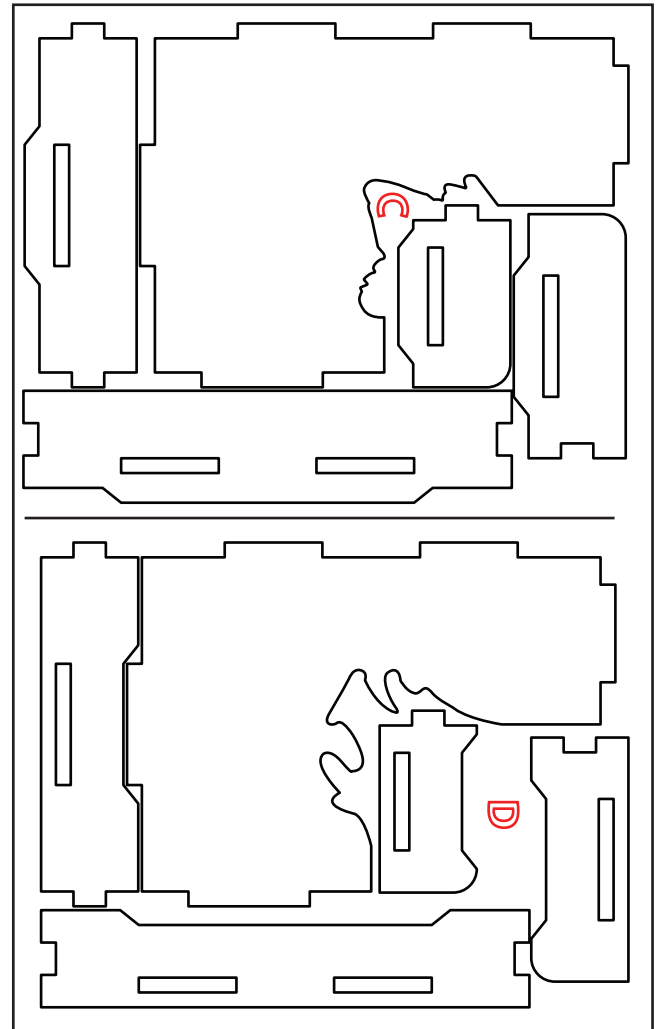
QUICK » START INSERT™ FOR
CRY HAVOC®



Sheet A1-B1:



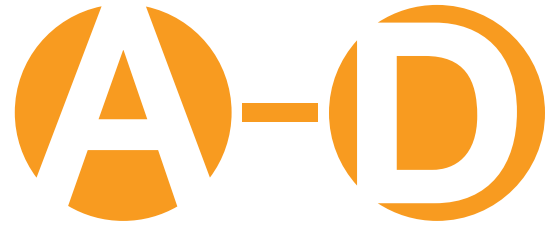
Sheet C1-D1:



This Quick Start Insert is compatible with Cry Havoc® and its expansions. This is a non-licensed product. ALL RIGHTS RESERVED by their respective trademark holders. No challenge to any intellectual property rights is intended or implied by representations of compatibility and no endorsements of any of our products by any other company is implied or represented.

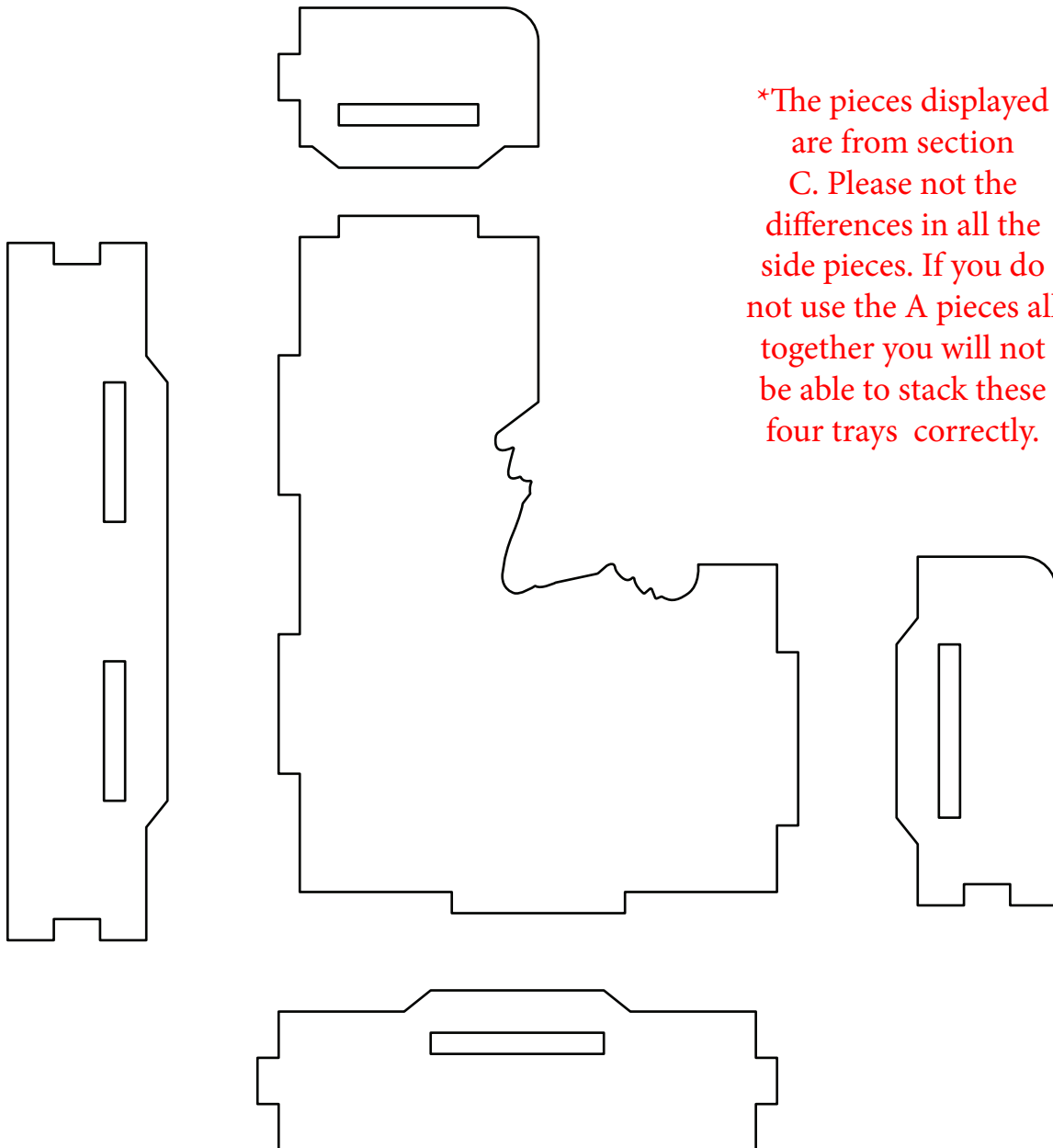


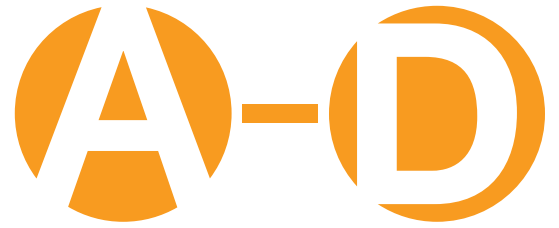
QUICK » START INSERT™ FOR
CRY HAVOC®



Recommended Assembly Sequence

1. Glue and assemble all side pieces

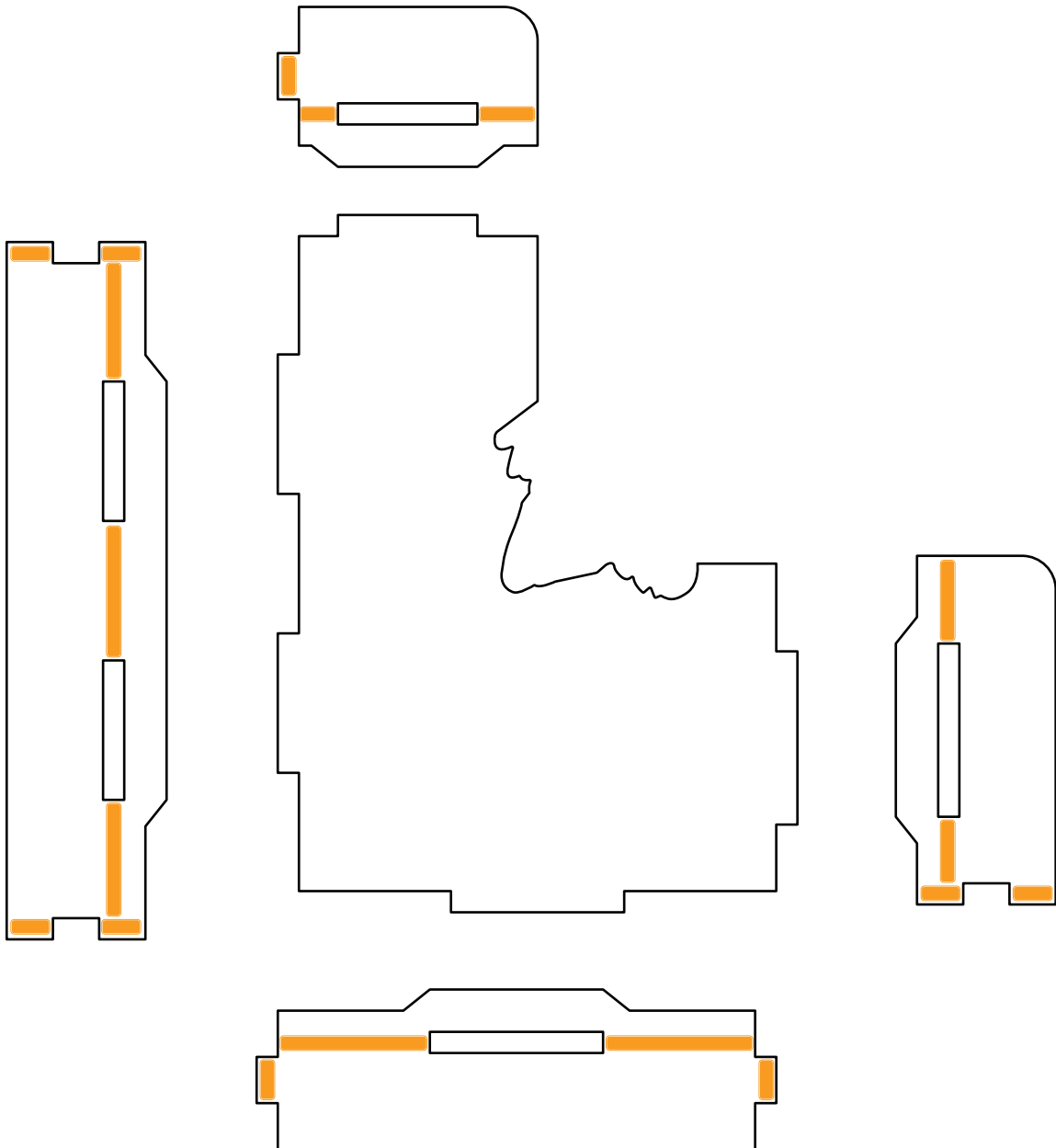




Glue Tips:

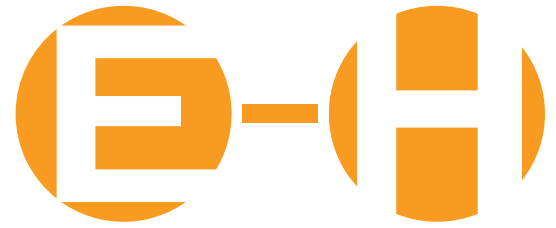
1. Glue, place pieces together, wipe off excess glue THEN tape firmly (Quickly)
2. Glue each exterior joint where two pieces come together

Glue Locations:

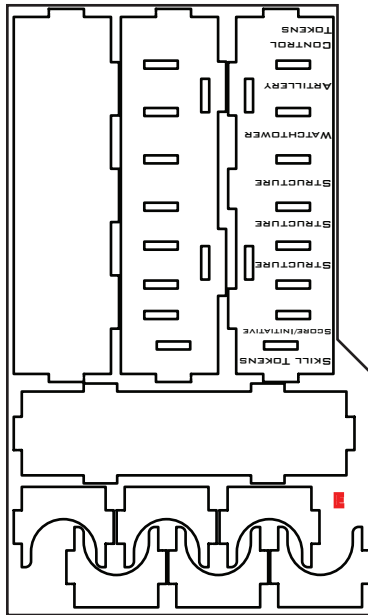




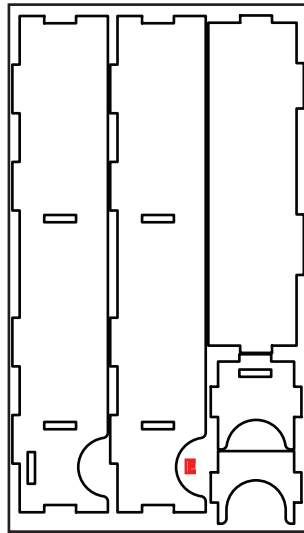
QUICK » START INSERT™ FOR
CRY HAVOC®



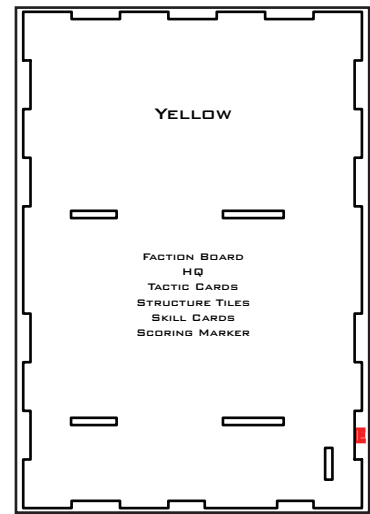
Sheet E1:



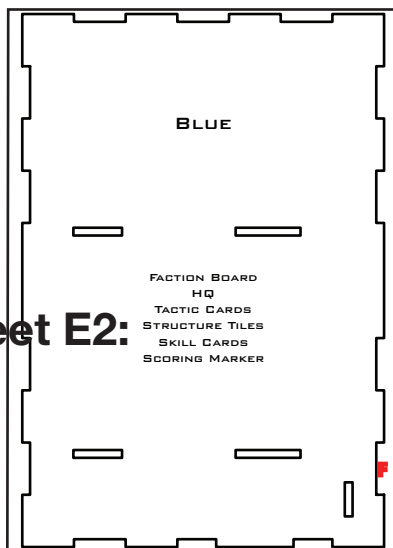
Sheet E2:



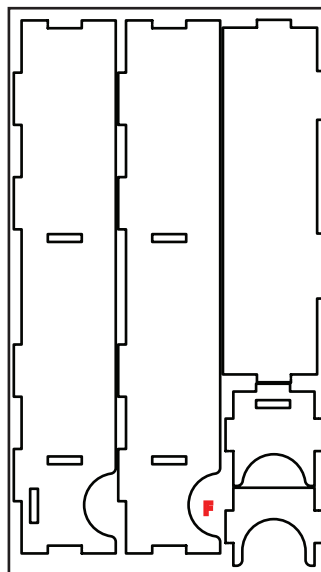
Sheet E3:



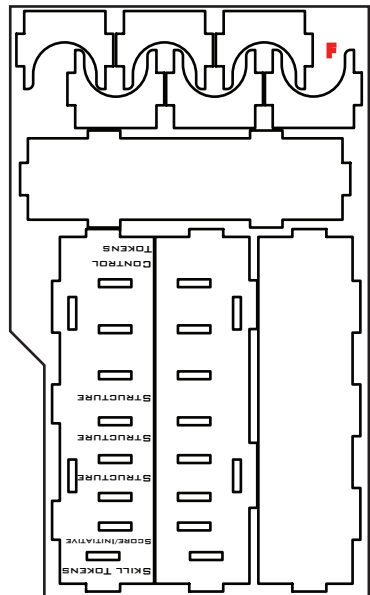
Sheet F1:



Sheet F2:

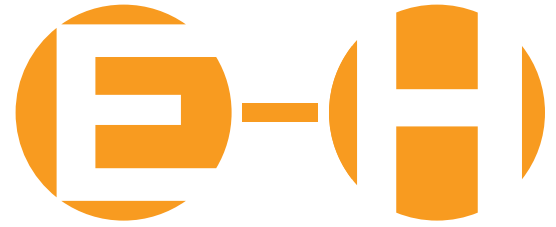


Sheet F3:

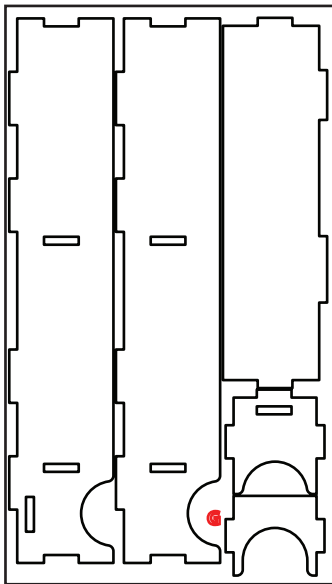


Sheet E2:

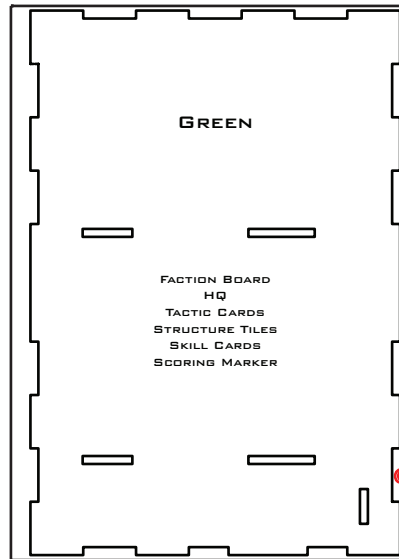
This Quick Start Insert is compatible with Cry Havoc® and its expansions. This is a non-licensed product. ALL RIGHTS RESERVED by their respective trademark holders. No challenge to any intellectual property rights is intended or implied by representations of compatibility and no endorsements of any of our products by any other company is implied or represented.



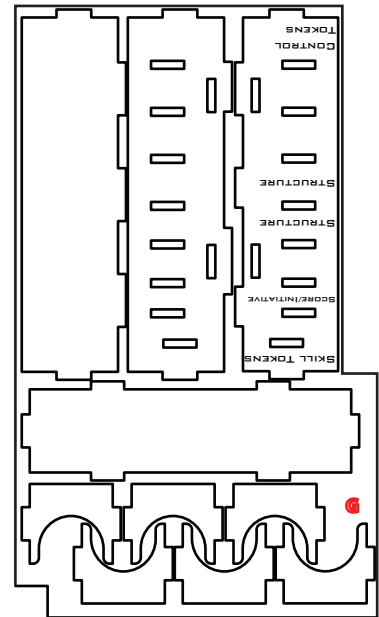
Sheet G1:



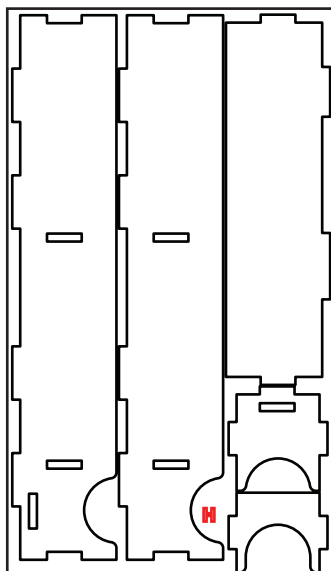
Sheet G2:



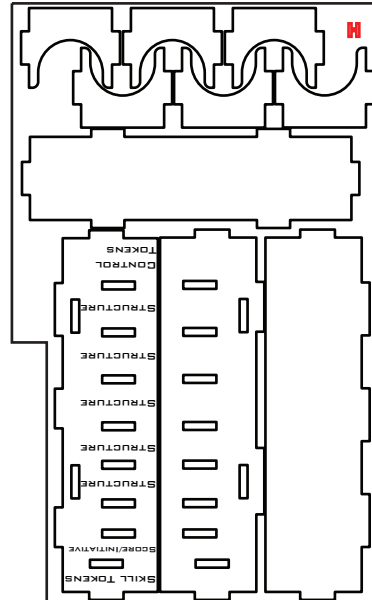
Sheet G3:



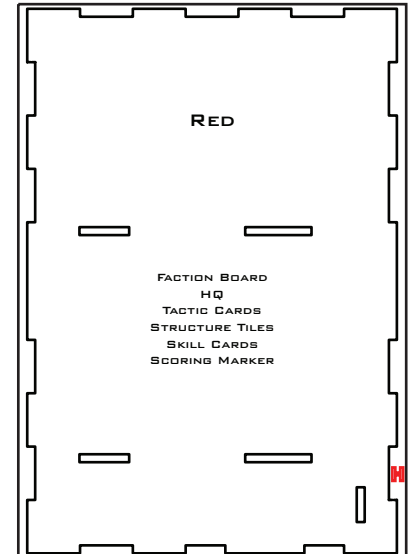
Sheet H1:



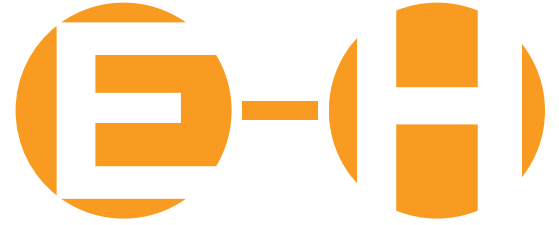
Sheet H2:



Sheet H3:



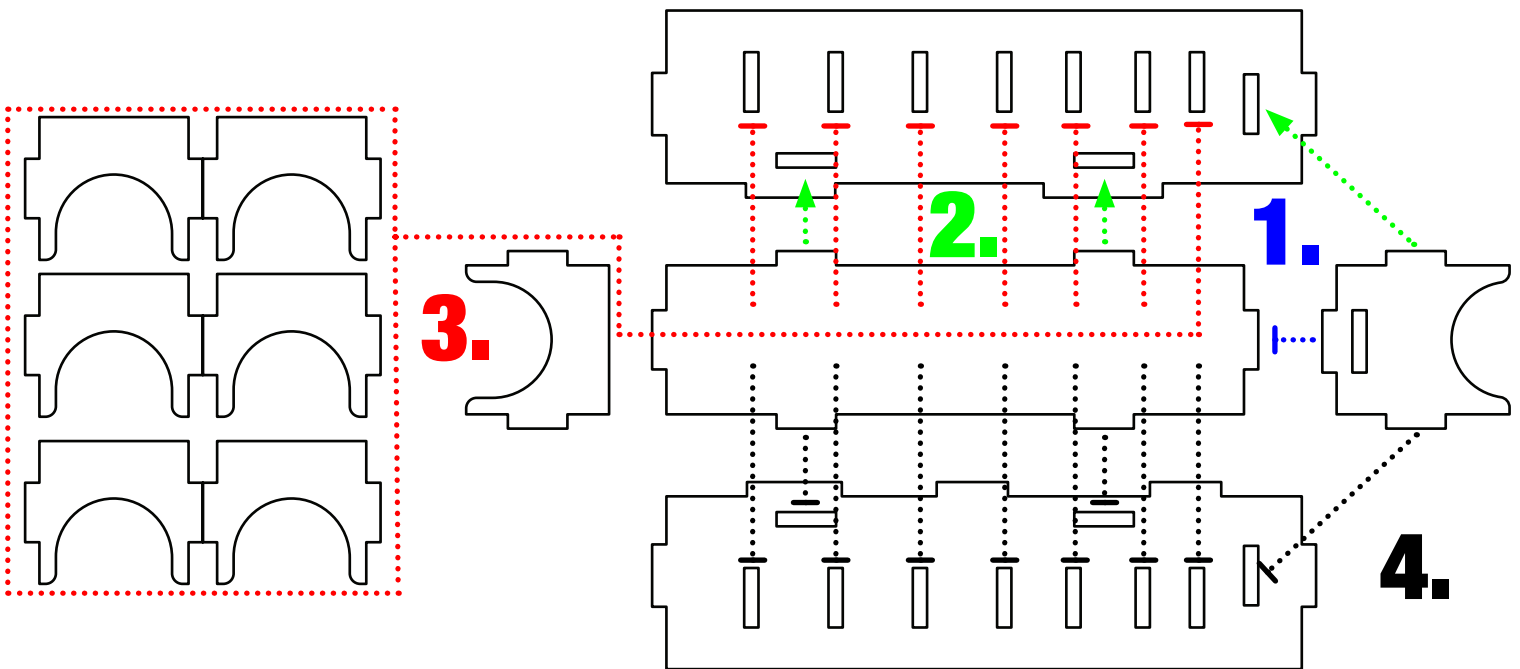
This Quick Start Insert is compatible with Cry Havoc® and its expansions. This is a non-licensed product. ALL RIGHTS RESERVED by their respective trademark holders. No challenge to any intellectual property rights is intended or implied by representations of compatibility and no endorsements of any of our products by any other company is implied or represented.

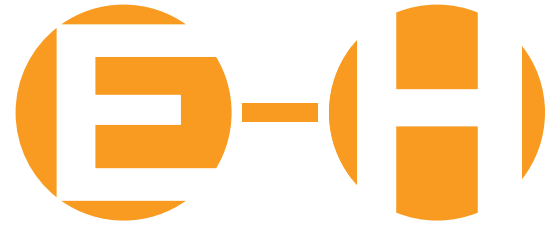


Recommended Assembly Sequence

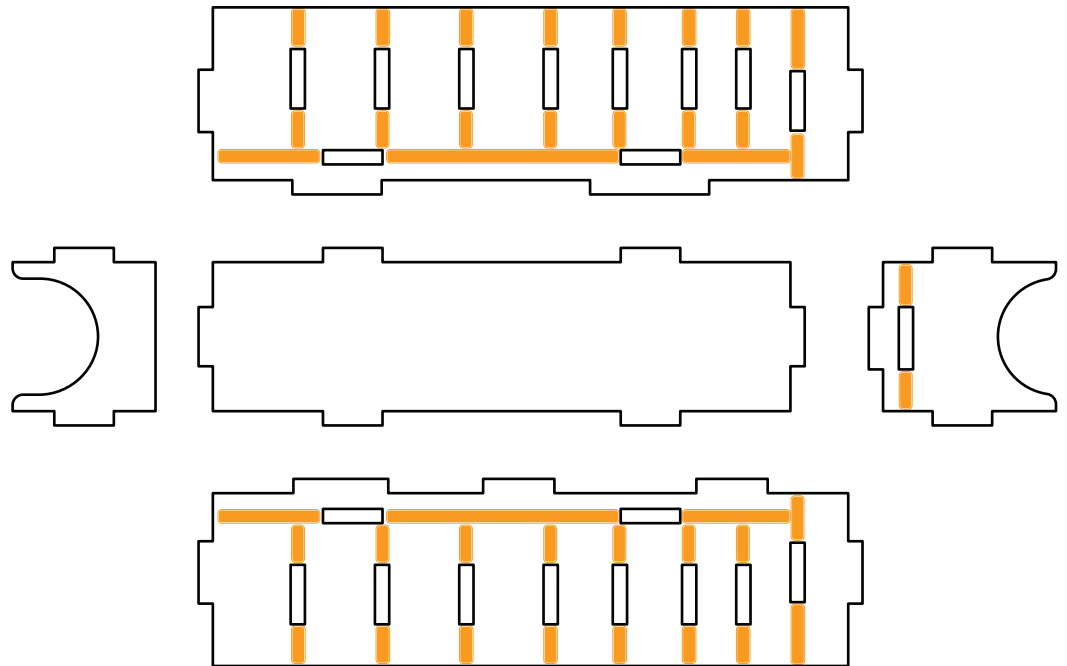
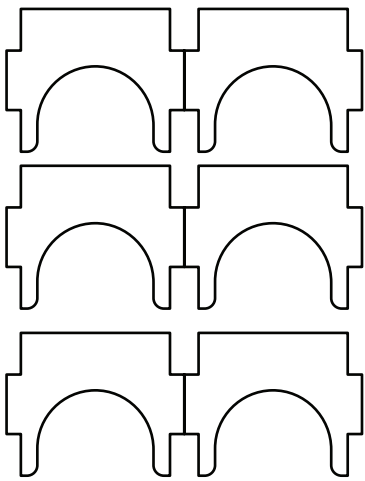
~Start by assembling the end chit holder

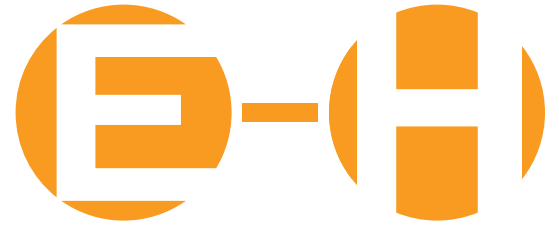
1. Glue and attach the large divider to the center base
2. Glue and attach the large divider to and center base to the inside tray wall
**Note: The inside tray wall has no etching on it.*
3. Glue and Insert all tabs into inside tray wall
4. Attach etched exterior wall (Etching facing out)





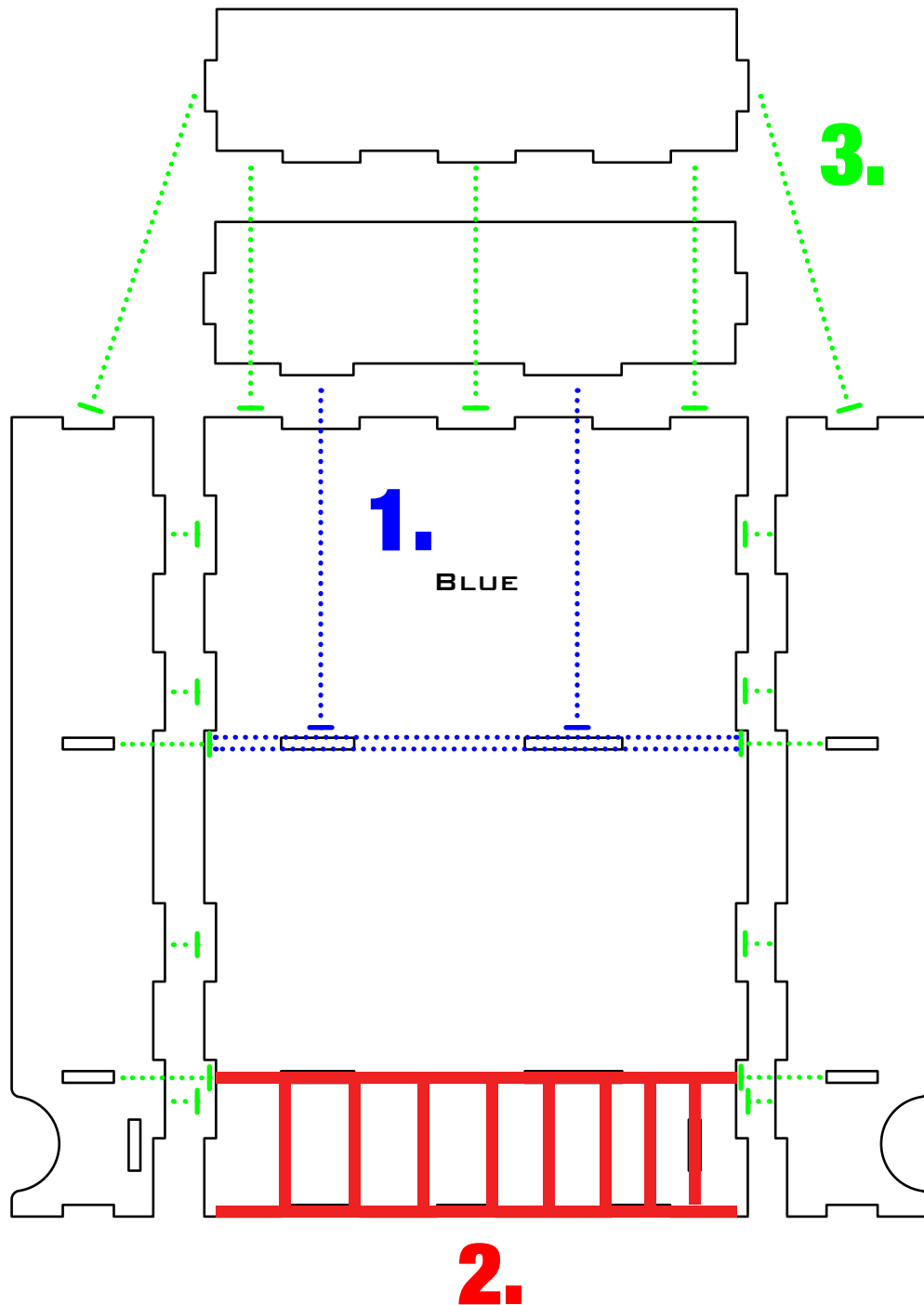
Glue Locations:

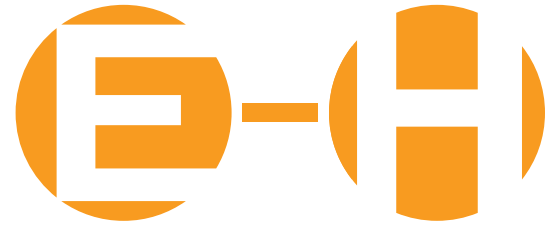




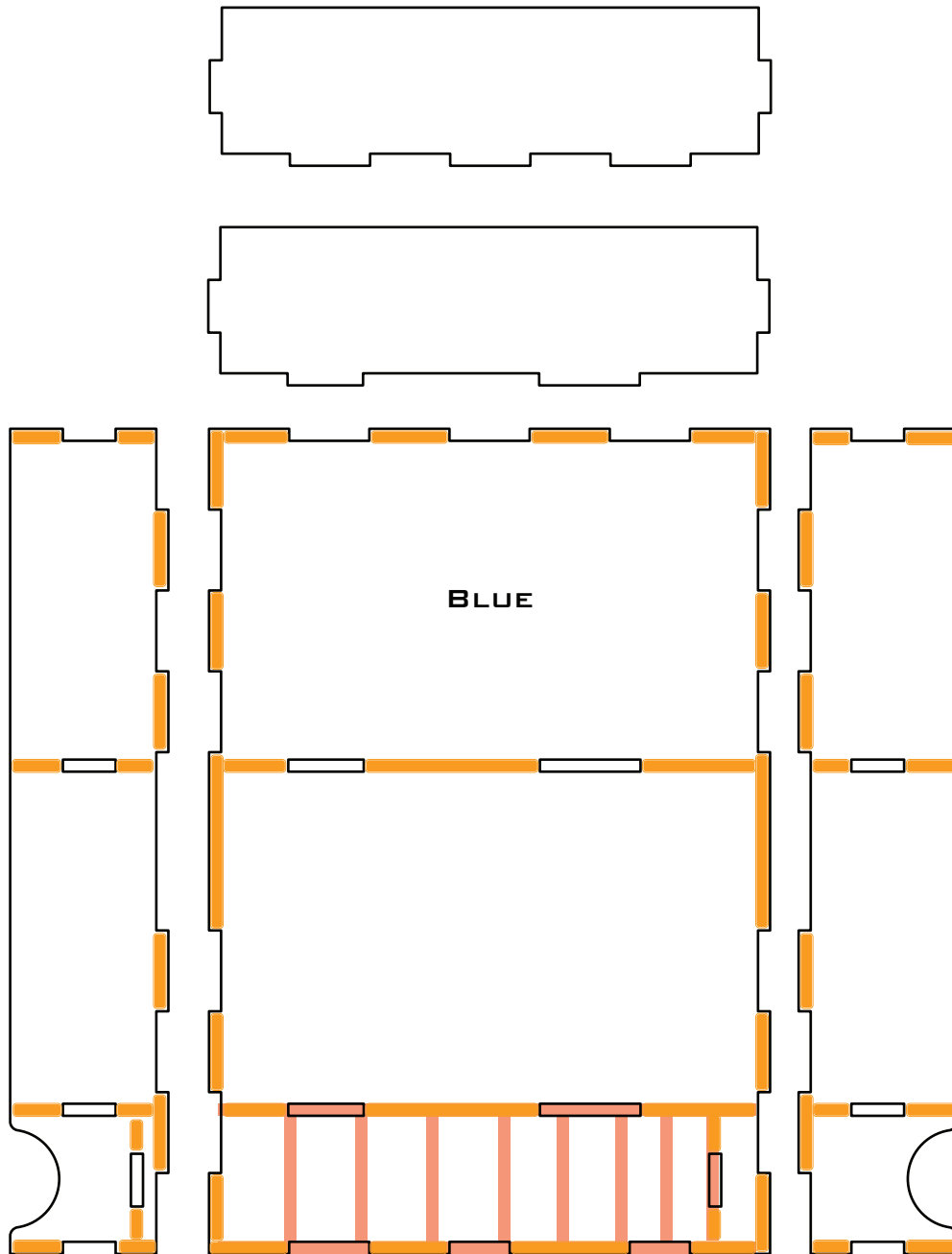
Recommended Assembly Sequence

1. Glue and Assemble center divider
2. Glue and Attach “End Chit Holder” Assembly
3. Glue and Assemble the 3 side pieces



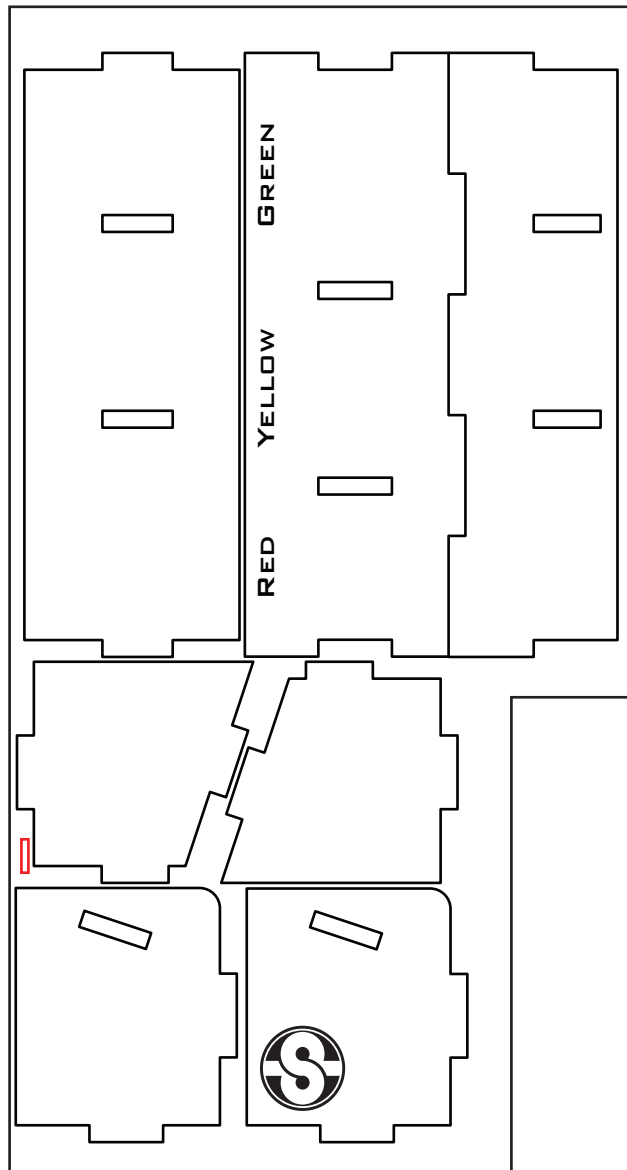


Glue Locations:





Sheet I1:

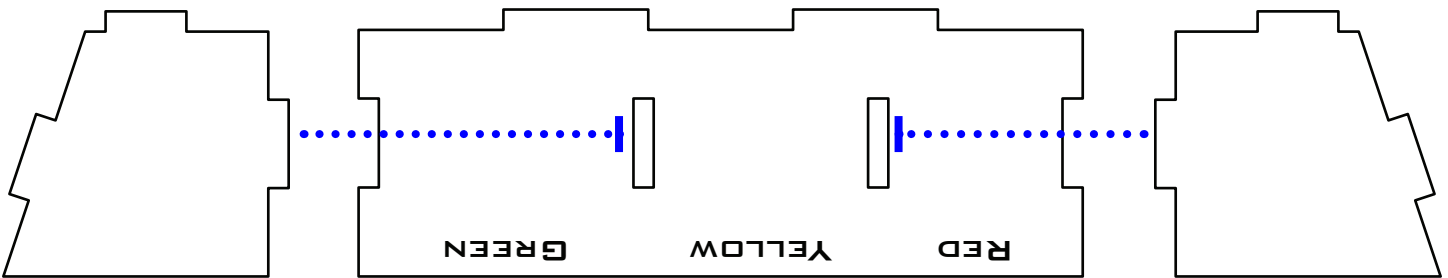




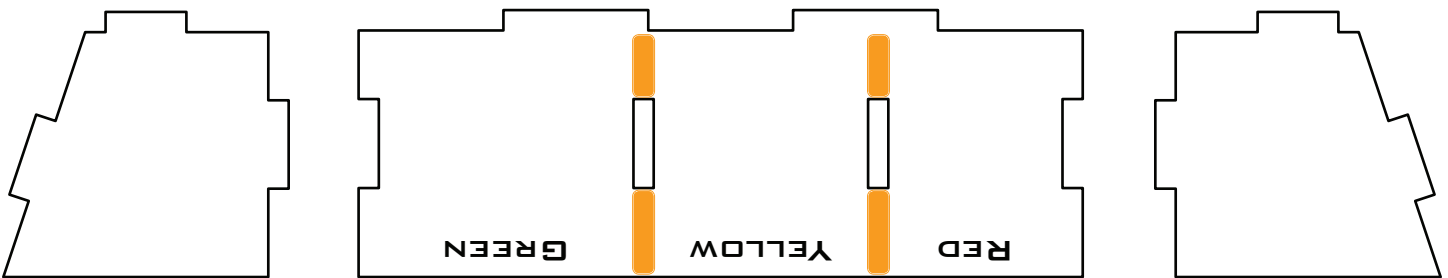
Recommended Assembly Sequence

1. Glue and Assemble both middle tabs

1.



Glue Locations:

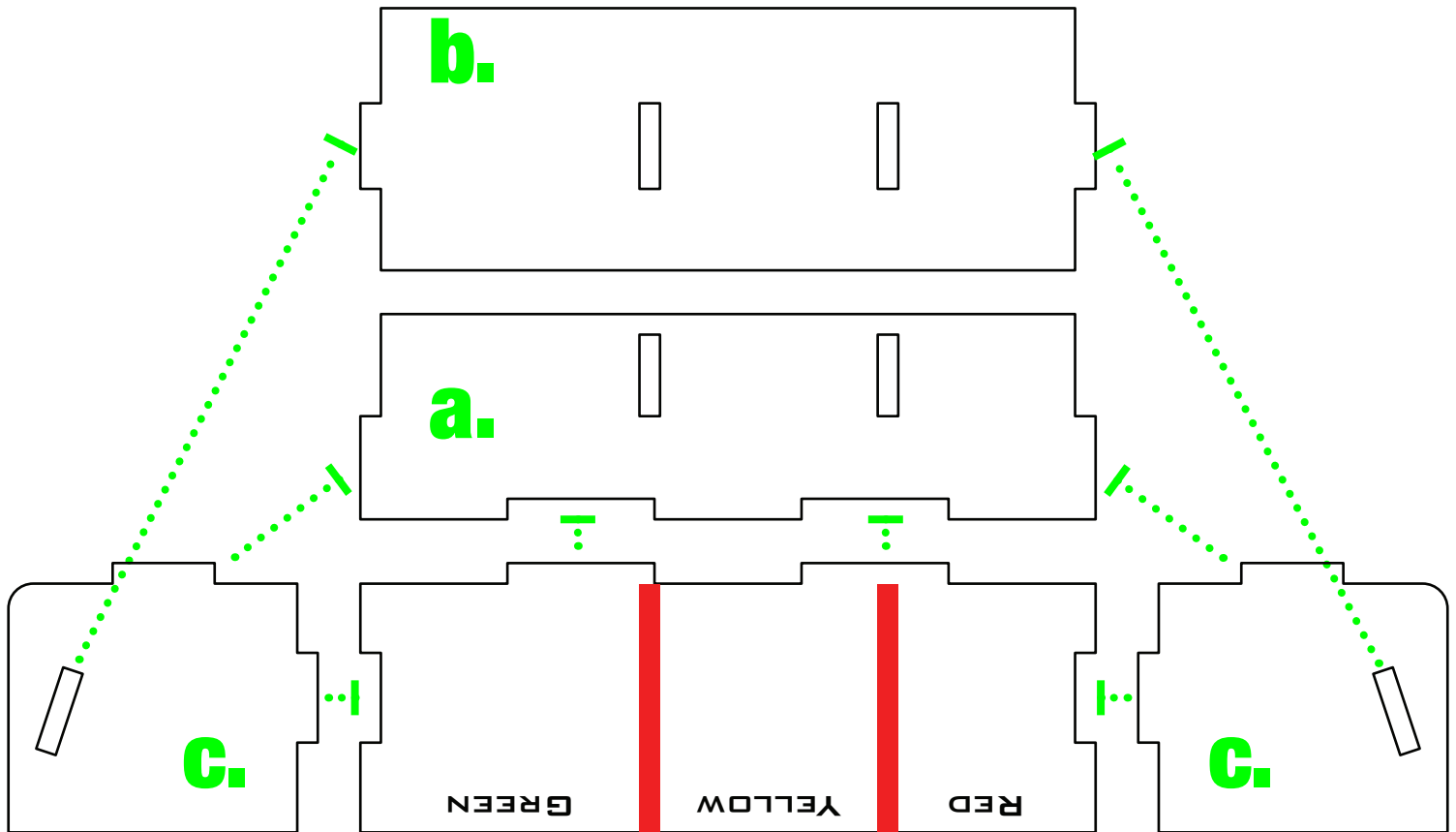




Recommended Assembly Sequence

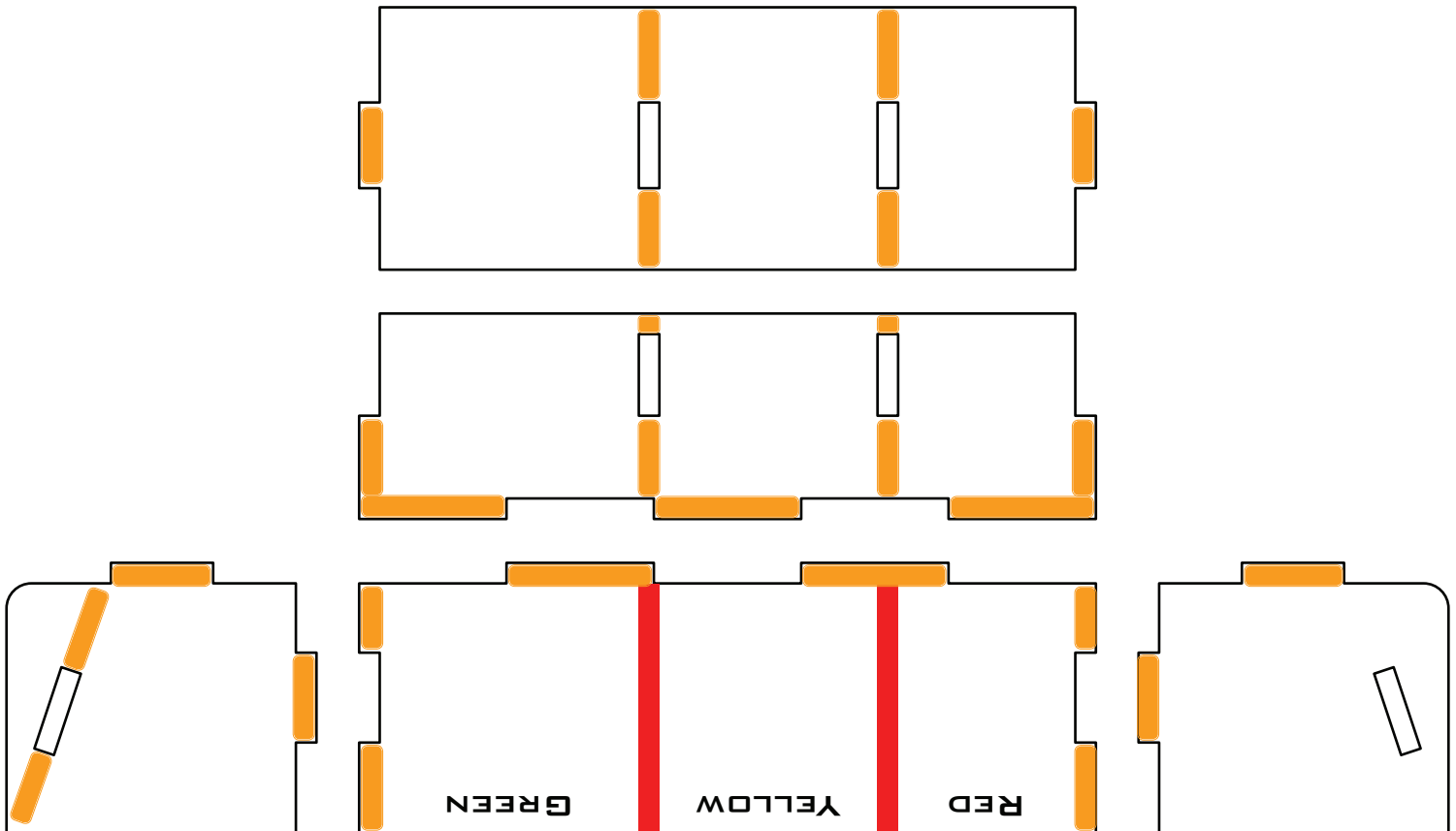
2. Glue and Assemble bottom piece, then front, and then sides

2.



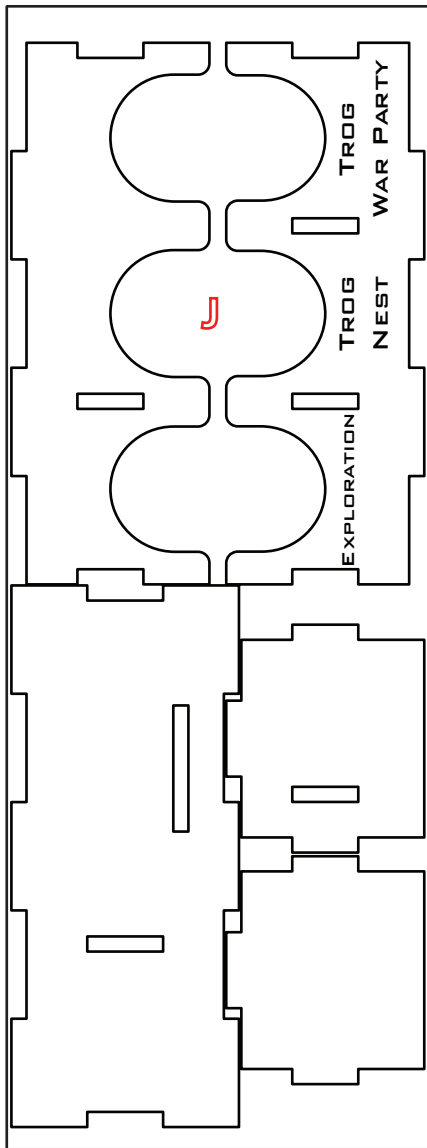


Glue Locations:

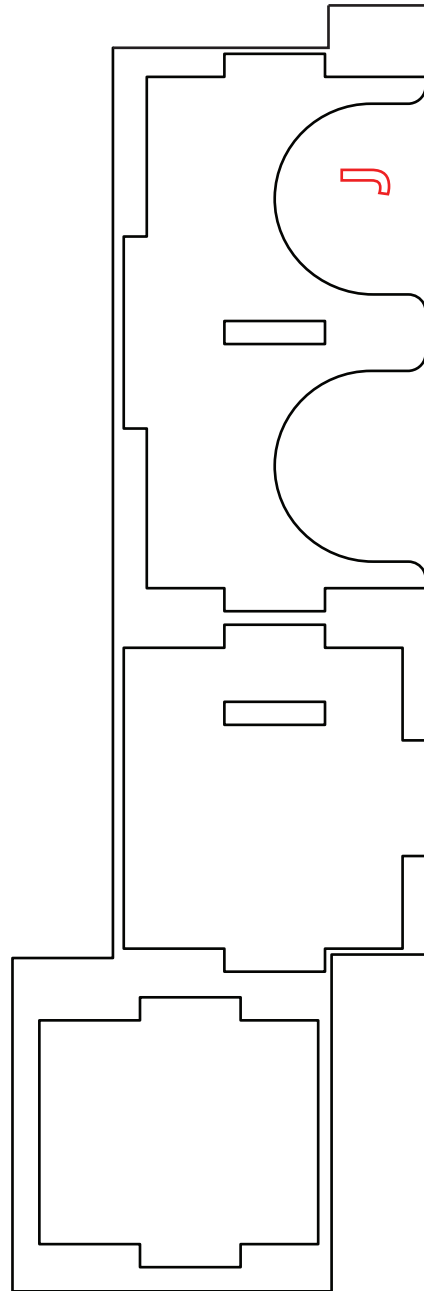




Sheet J1:



Sheet J2:

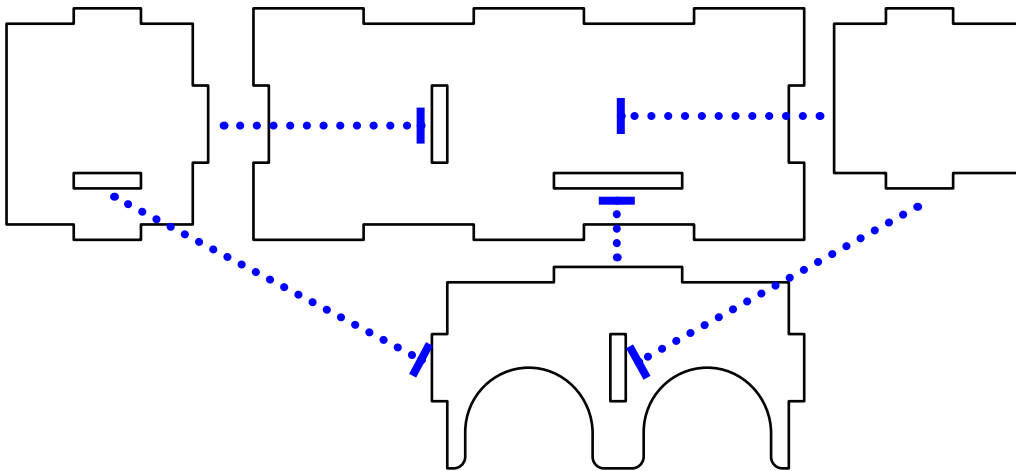




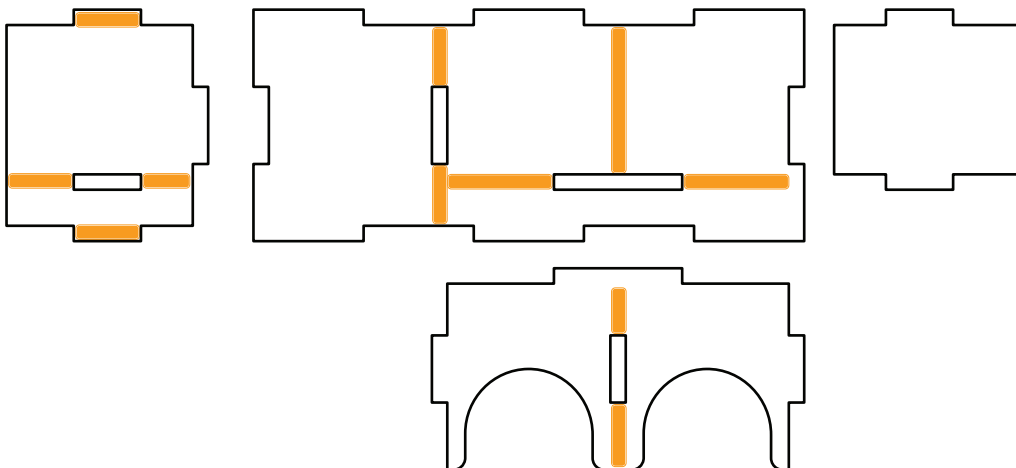
Recommended Assembly Sequence

1. Glue and Assemble center section
2. Glue and Assemble side pieces

1.



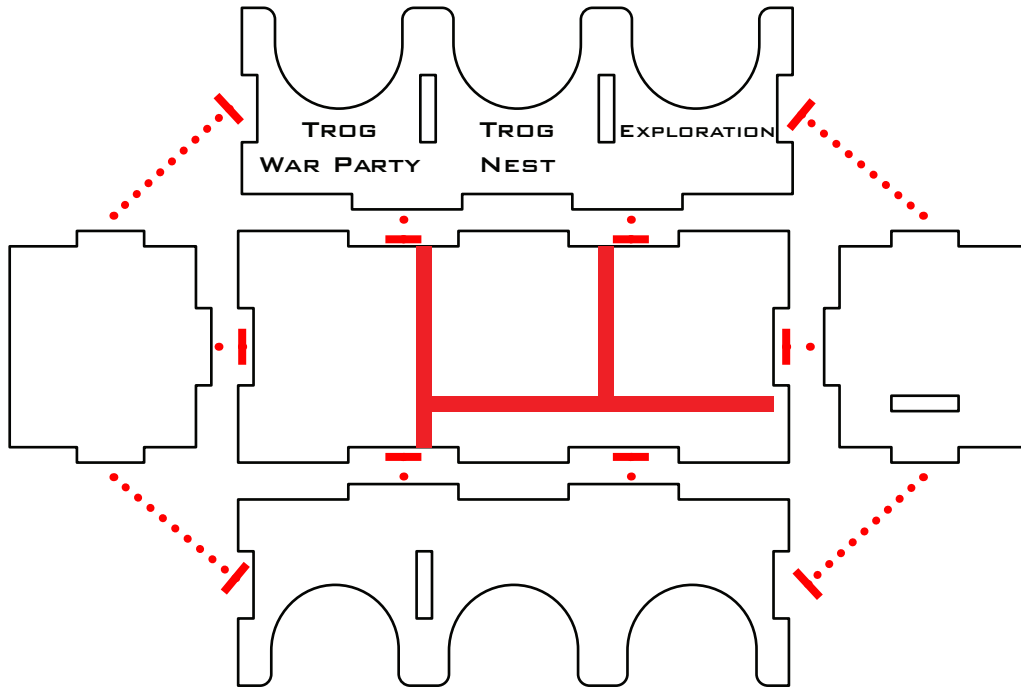
Glue Locations:



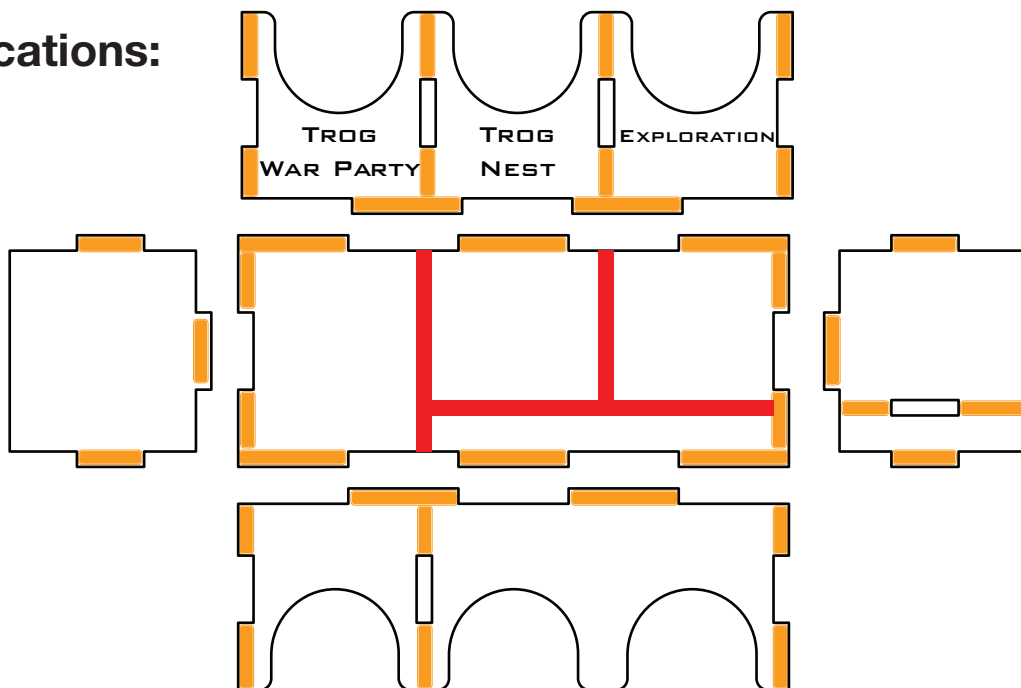


2.

*** Text needs to face out**

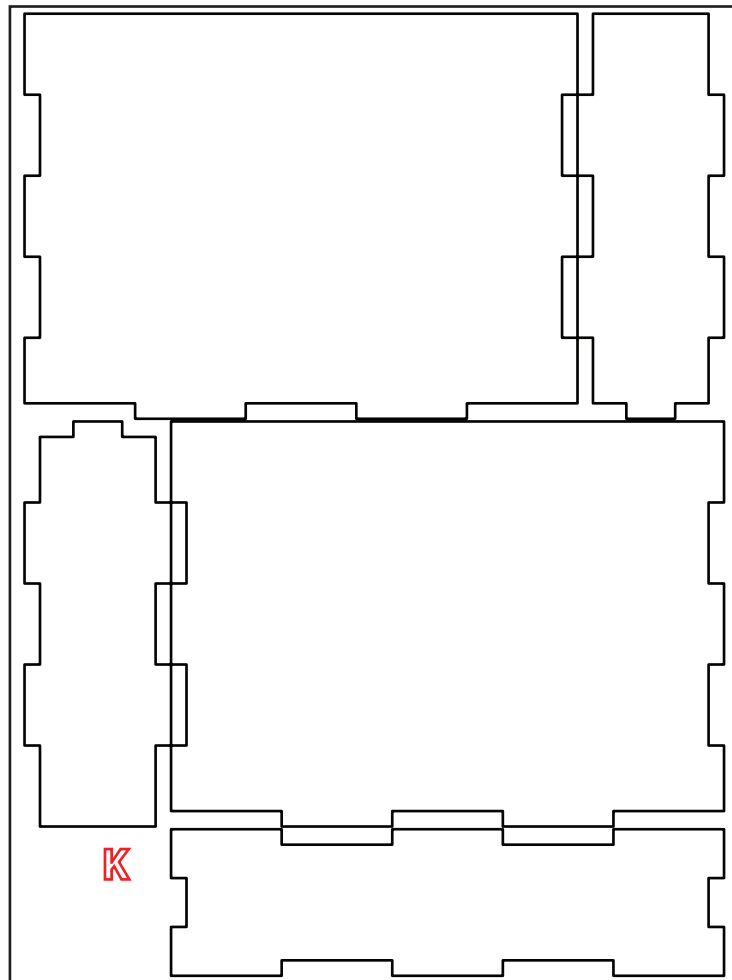


Glue Locations:





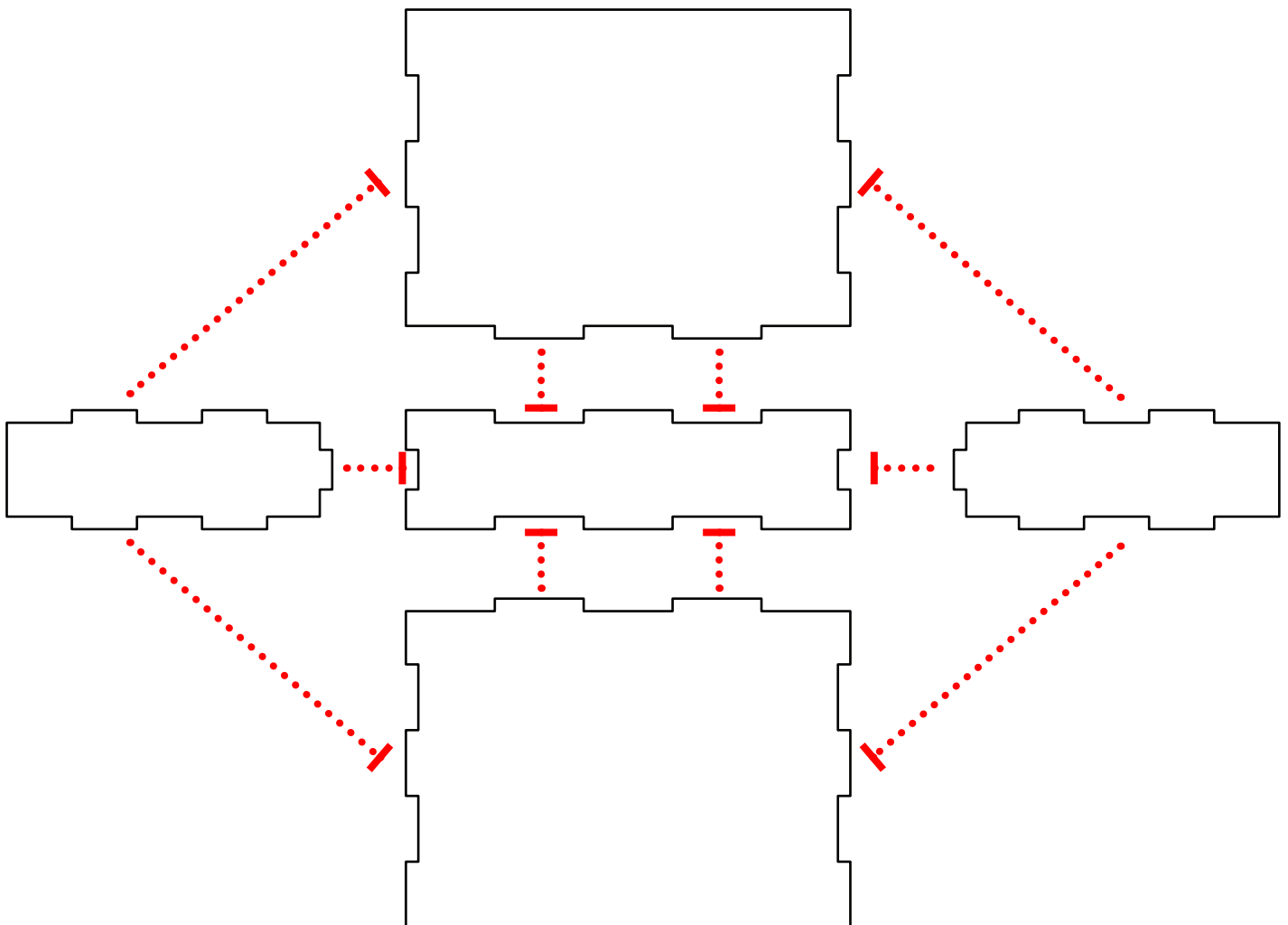
Sheet J1:





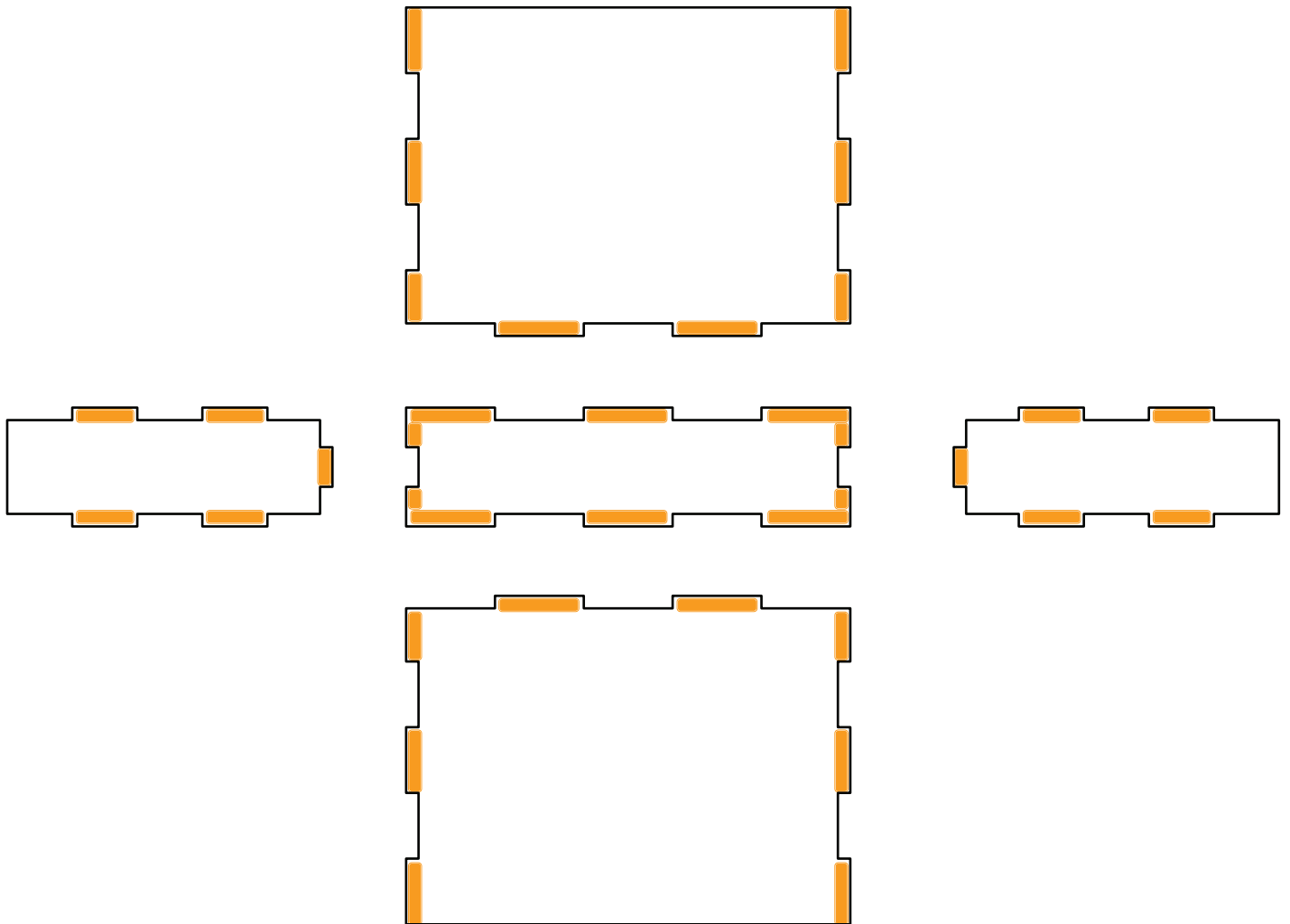
Recommended Assembly Sequence

1. Glue and Assemble side pieces



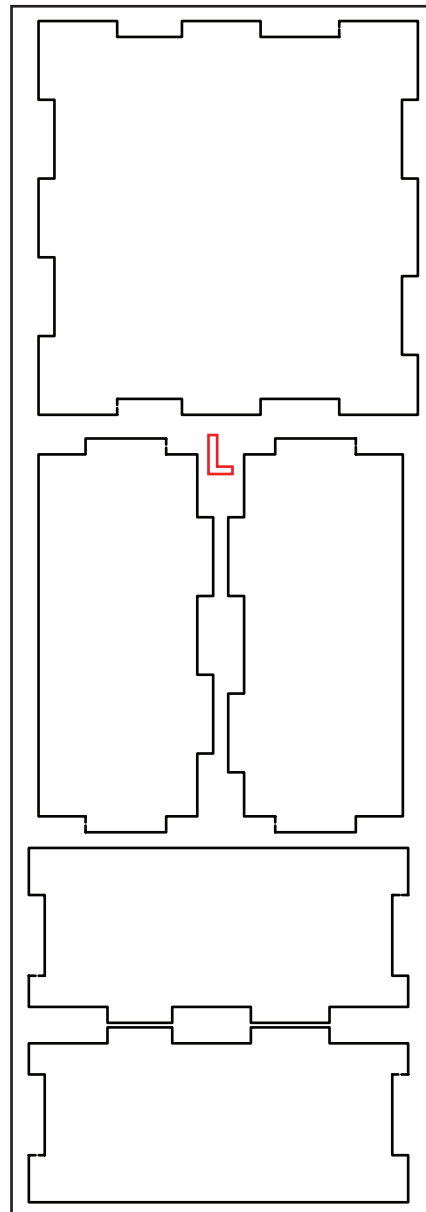


Glue Locations:





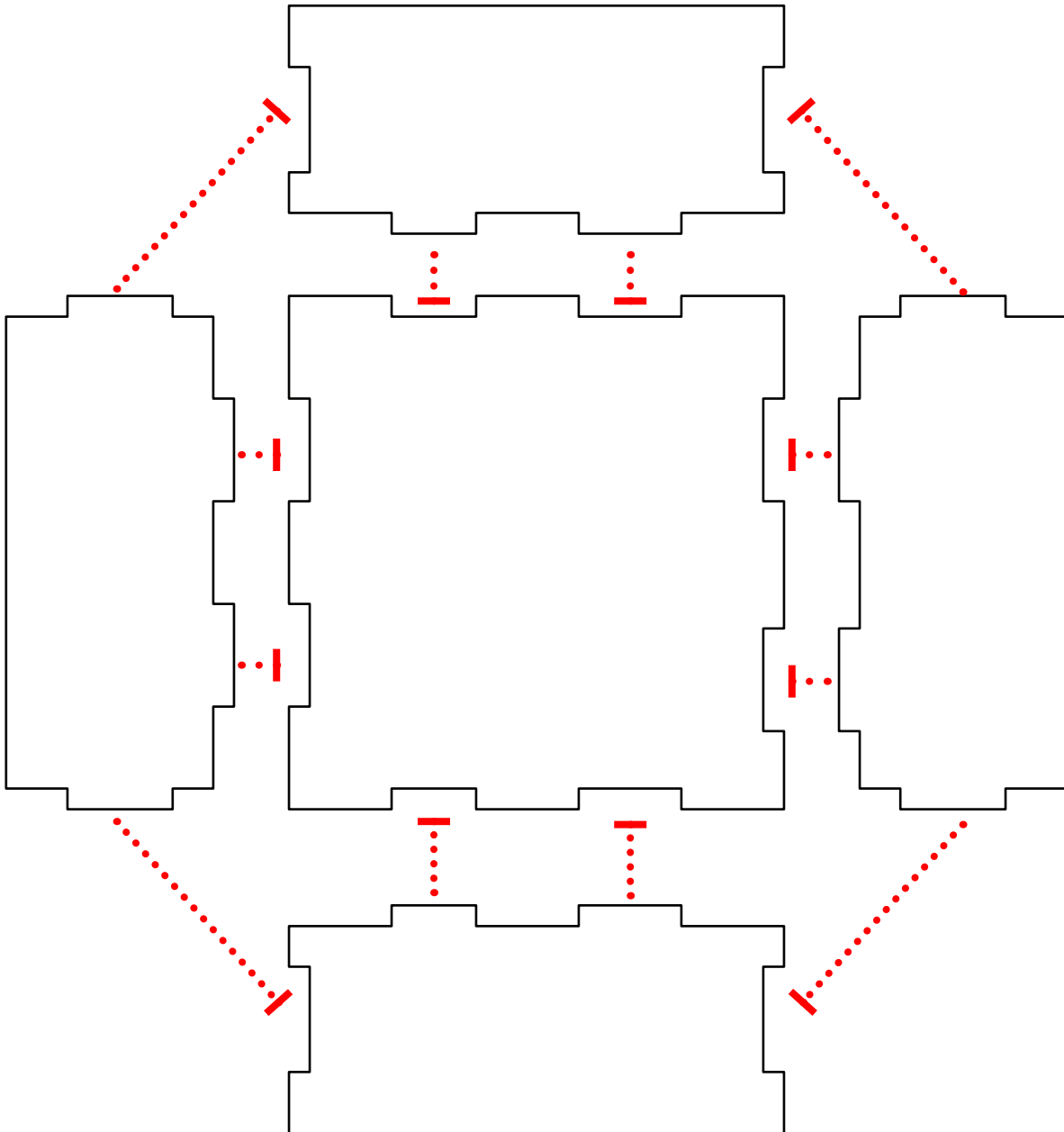
Sheet L1:





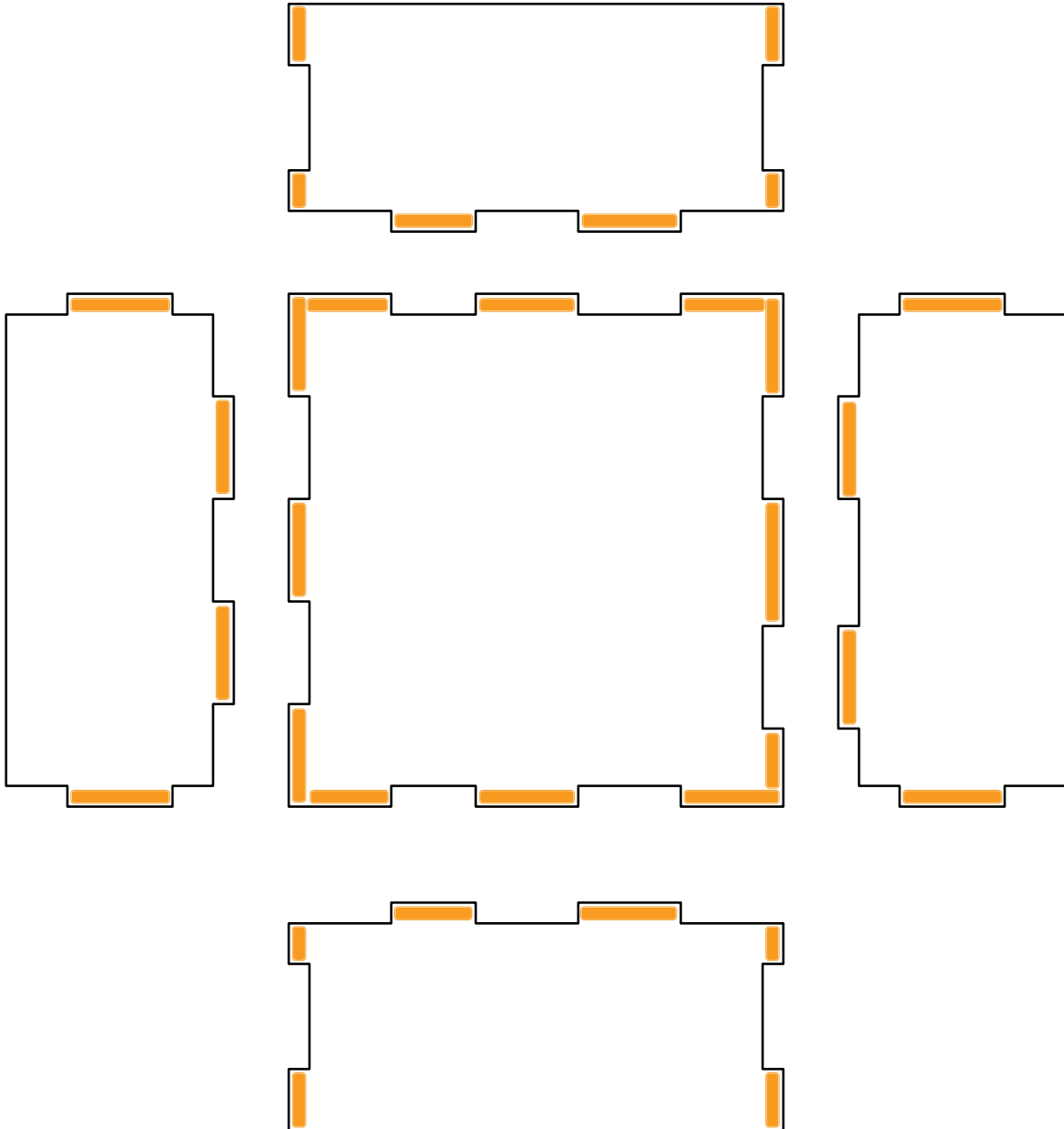
Recommended Assembly Sequence

1. Glue and Assemble side pieces





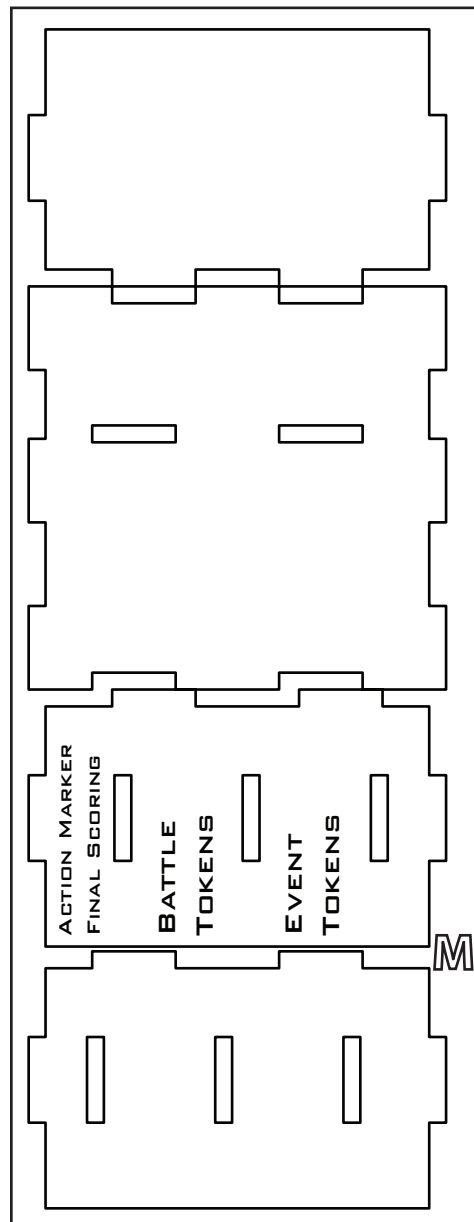
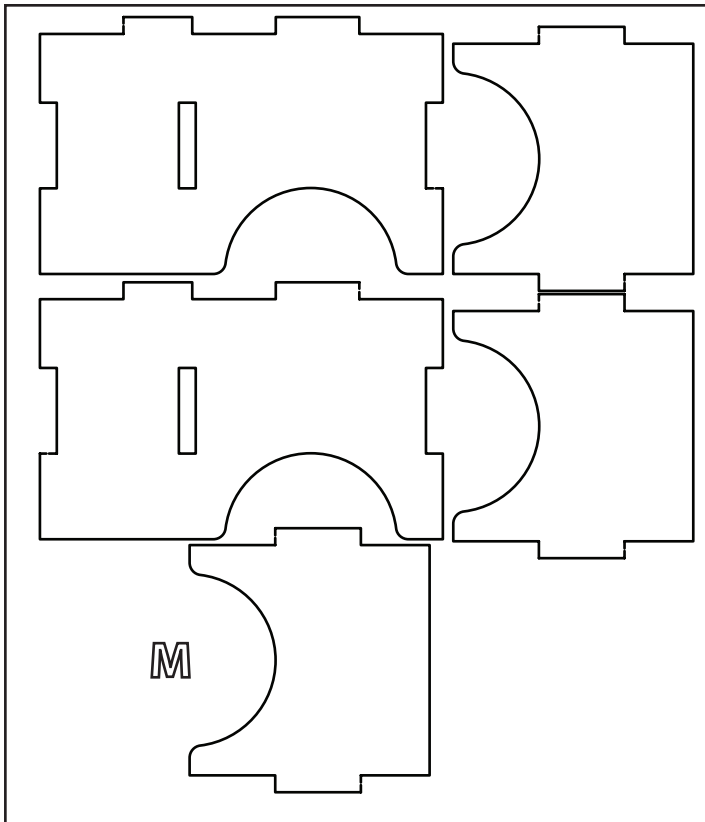
Glue Locations:





Sheet M2:

Sheet M1:

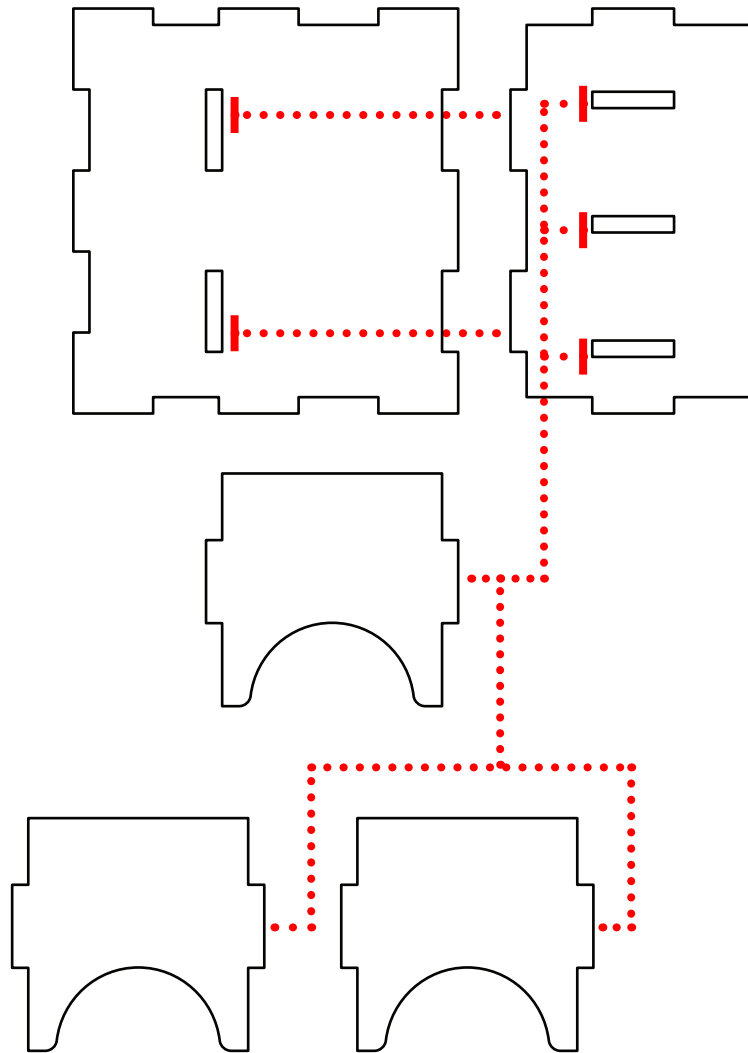


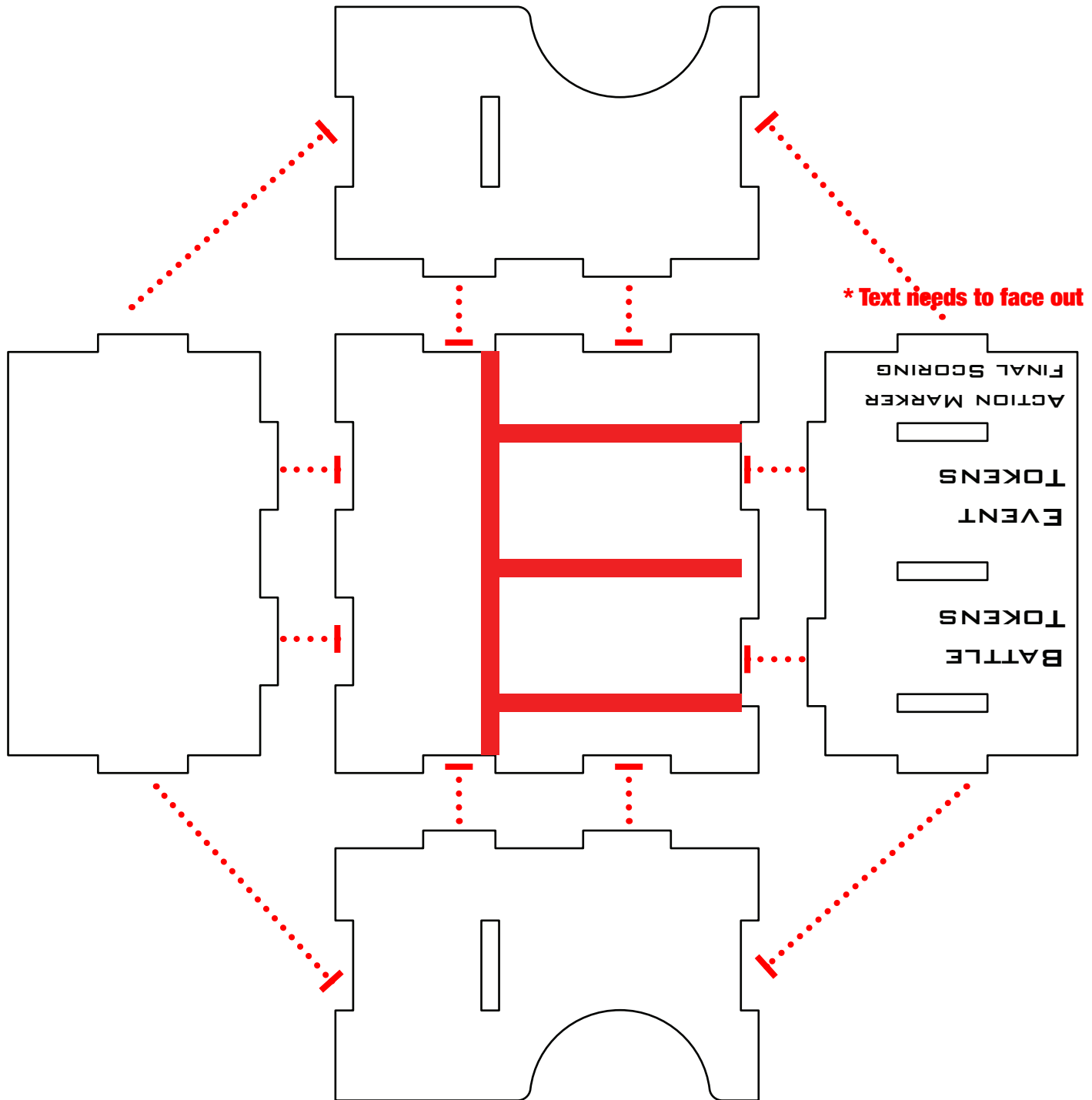
This Quick Start Insert is compatible with Cry Havoc® and its expansions. This is a non-licensed product. ALL RIGHTS RESERVED by their respective trademark holders. No challenge to any intellectual property rights is intended or implied by representations of compatibility and no endorsements of any of our products by any other company is implied or represented.



Recommended Assembly Sequence

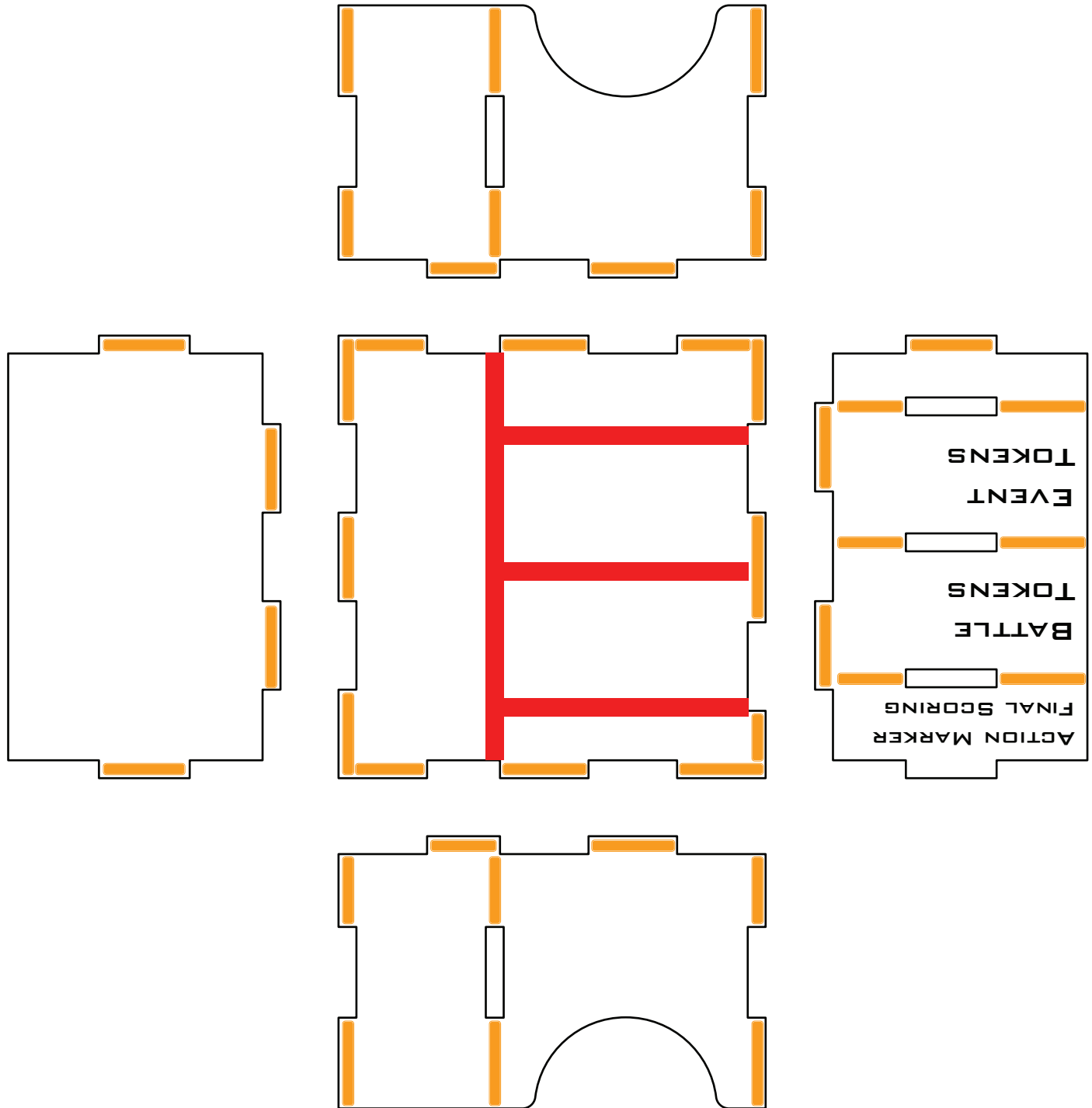
1. Glue and Assemble middle pieces







Glue Locations:





QUICK START INSERT™ FOR CRY HAVOC®

Layout in Box

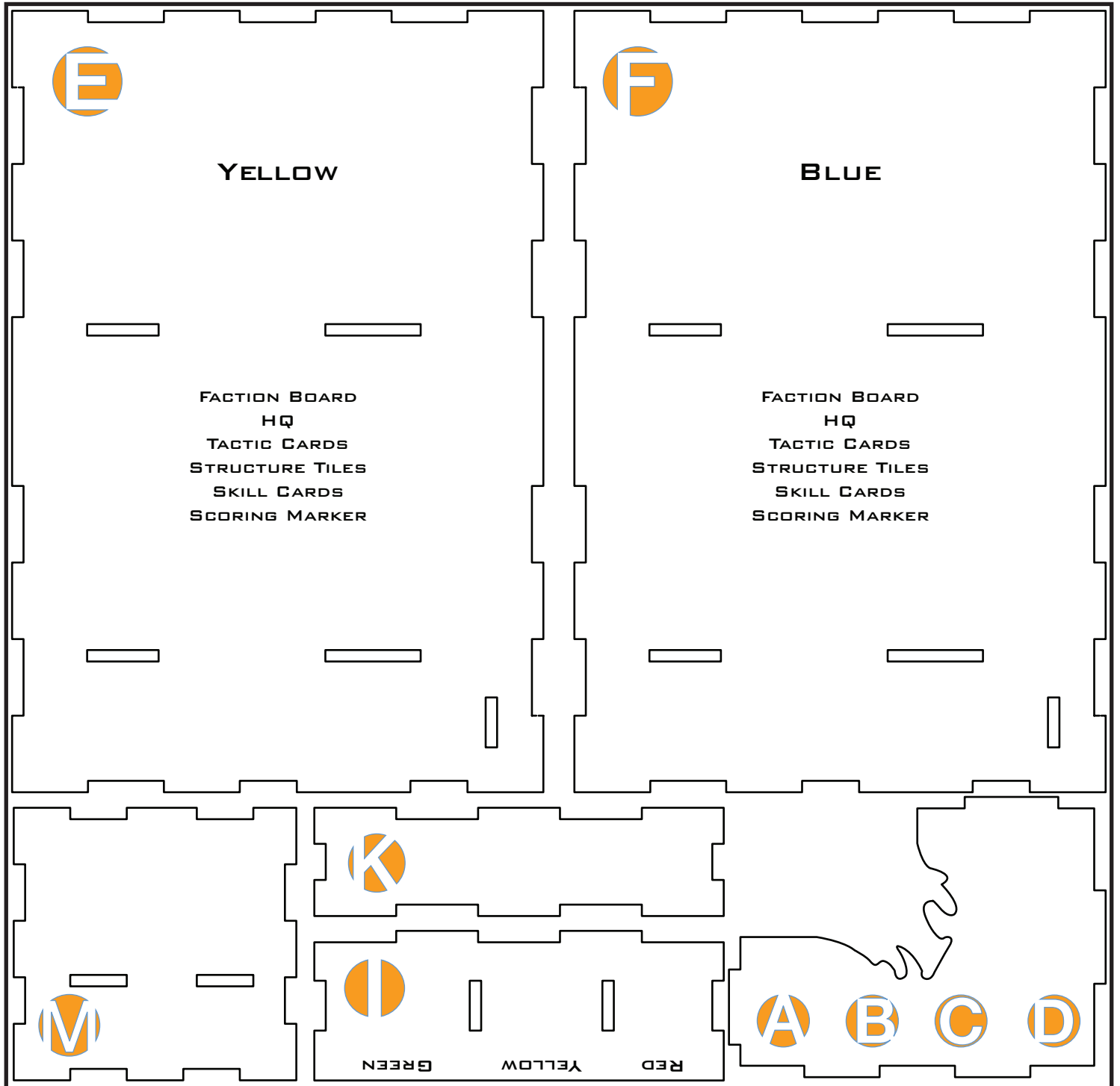


This Quick Start Insert is compatible with Cry Havoc® and its expansions. This is a non-licensed product. ALL RIGHTS RESERVED by their respective trademark holders. No challenge to any intellectual property rights is intended or implied by representations of compatibility and no endorsements of any of our products by any other company is implied or represented.



QUICK START INSERT™ FOR CRY HAVOC®

Bottom Layer

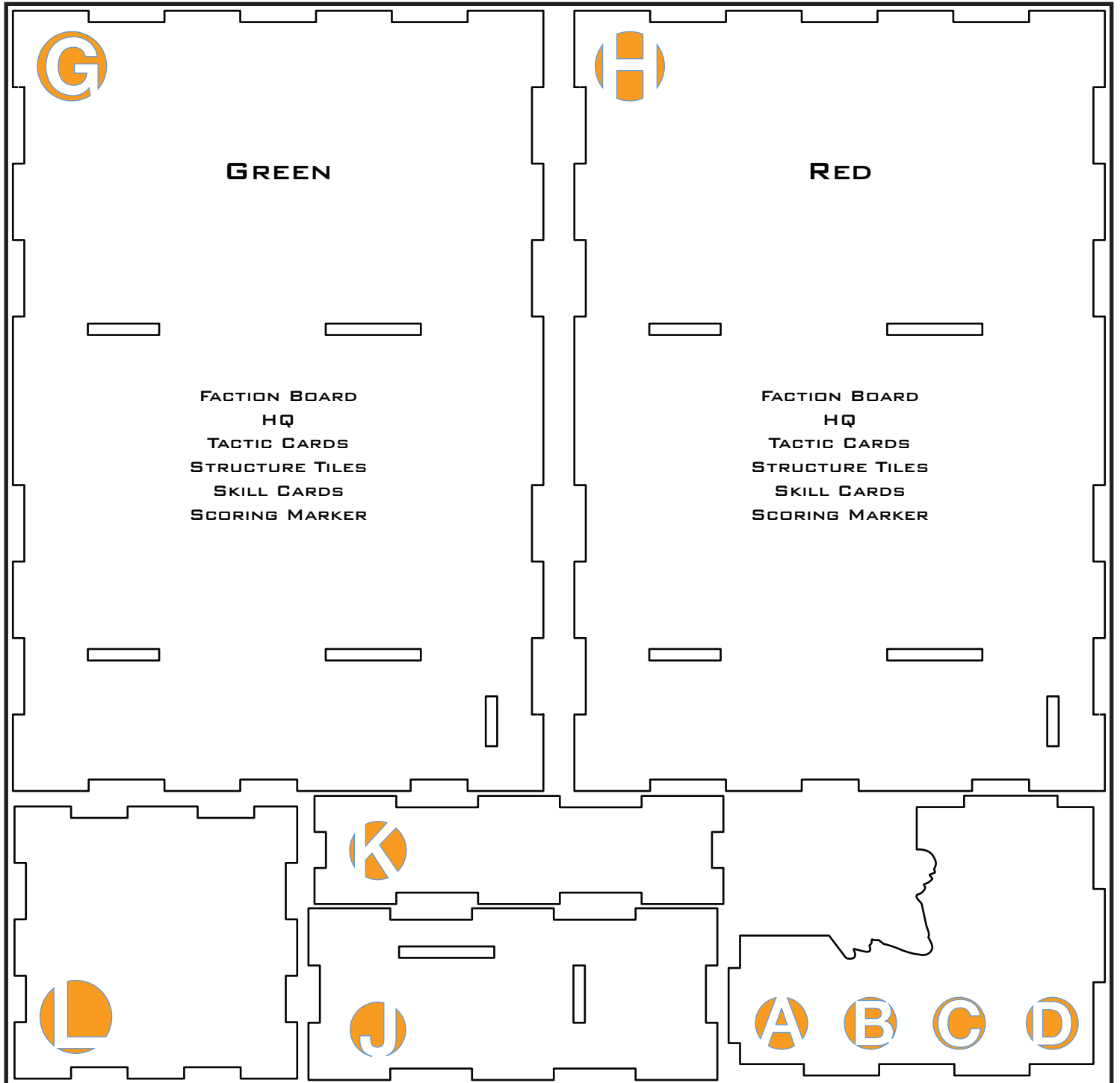


This Quick Start Insert is compatible with Cry Havoc® and its expansions. This is a non-licensed product. ALL RIGHTS RESERVED by their respective trademark holders. No challenge to any intellectual property rights is intended or implied by representations of compatibility and no endorsements of any of our products by any other company is implied or represented.



QUICK START INSERT™ FOR CRY HAVOC®

Top Layer



This Quick Start Insert is compatible with Cry Havoc® and its expansions. This is a non-licensed product. ALL RIGHTS RESERVED by their respective trademark holders. No challenge to any intellectual property rights is intended or implied by representations of compatibility and no endorsements of any of our products by any other company is implied or represented.