

# ASSEMBLY INSTRUCTIONS FOR



*less work, more game*



# SCYTHE®

**QUICK** >> **START INSERT™**

Scythe® is a registered trademark of Stonemaier Games. Any mention of Scythe® is for reference purposes only. ALL RIGHTS RESERVED by their respective trademark holders. No challenge to any intellectual property rights is intended or implied by representations of compatibility and no endorsements of any of our products by any other company is implied or represented.



# QUICK»START INSERT™ FOR SCYTHE®

## General Assembly Instructions

### The following are basic instructions for any of the Quick Start Inserts:

- All panels are labeled with an Alphabet letter (A, B, C, etc.). First sort all panels into piles by their letters before you begin to assemble.
- Layout the parts in the diagrams provided, to ensure you have all the parts
- Glue only the edges that come into contact with the wood (remove excess immediately)
- Allow 24 hours to dry before using

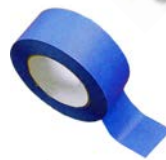
### Tips & Tricks

- Some of the parts might need to be slightly sanded on the edges for a perfect fit.
- Sometimes tapping the pieces with a small amount of force (with a mallet) helps create a tighter fit.
- Taping the outside corners of the boxes helps it hold in place while the glue is drying.
- If you break a part, don't hesitate calling we always carry spares – you just need to cover shipping. (most spares can be send in an envelope, if so we don't charge for shipping)

### Assembly Supplies



Beacon 527 or wood-glue



Painters blue tape  
(painter's tape helps protect the finish)



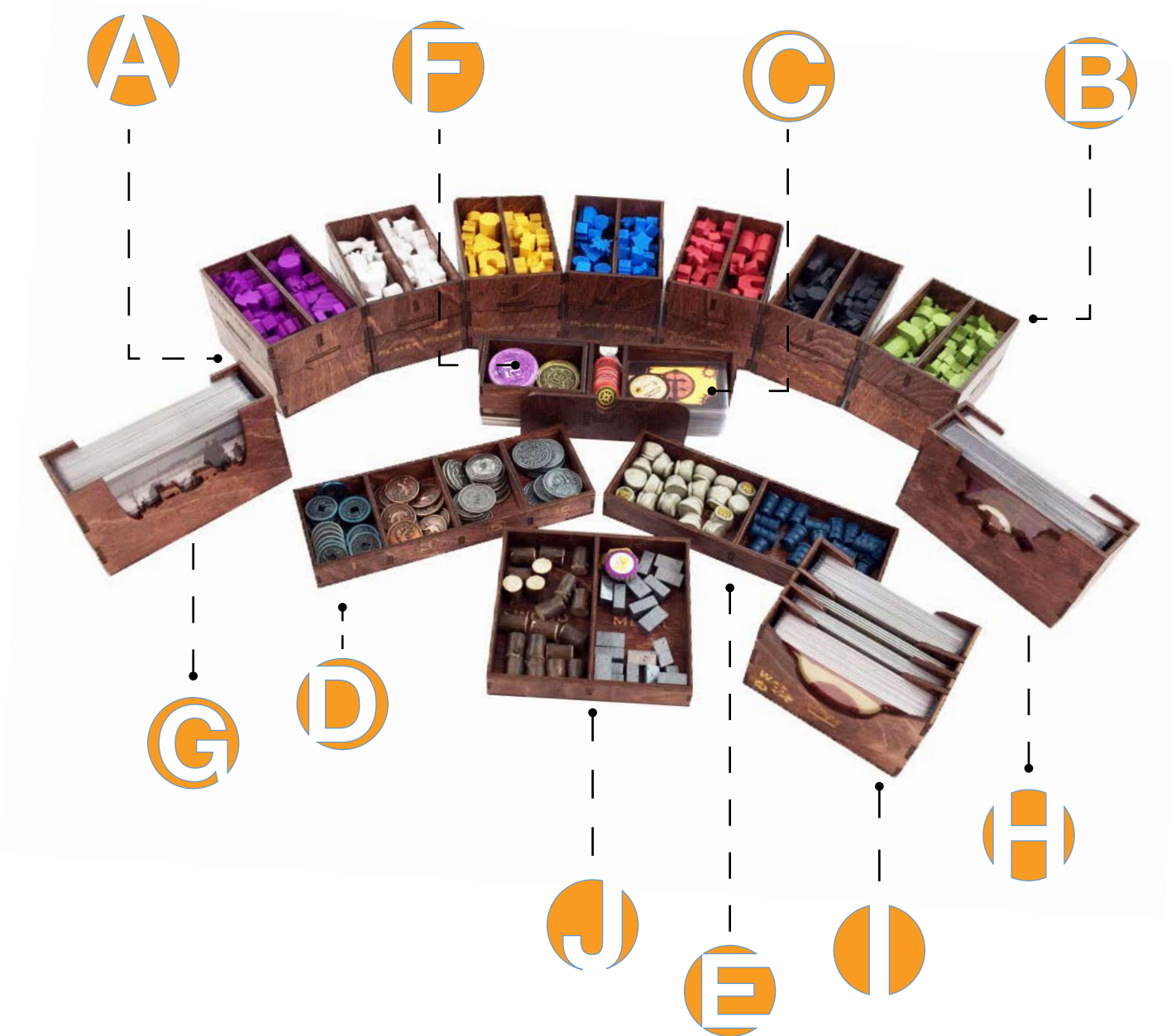
Rubber mallet  
(or something to tap the pieces together)



Cotton swap/ Q-tip  
(or something to wipe the excess glue)



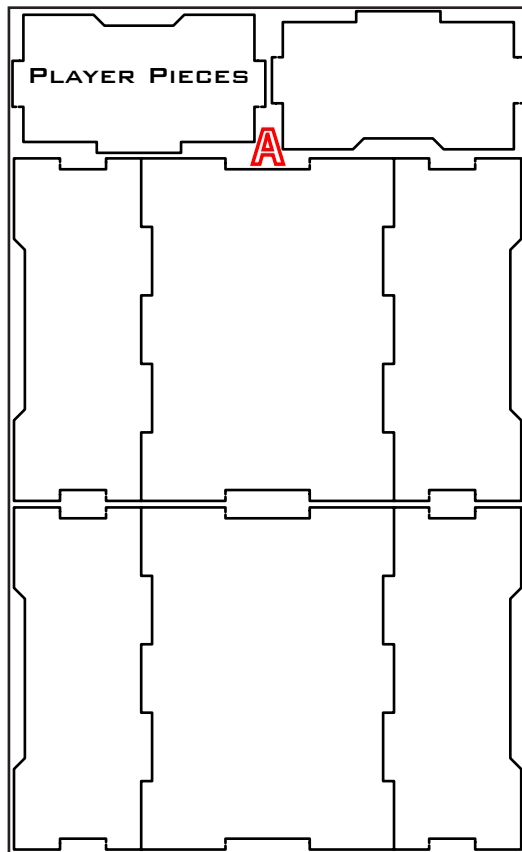
# QUICK START INSERT™ FOR SCYTHE®



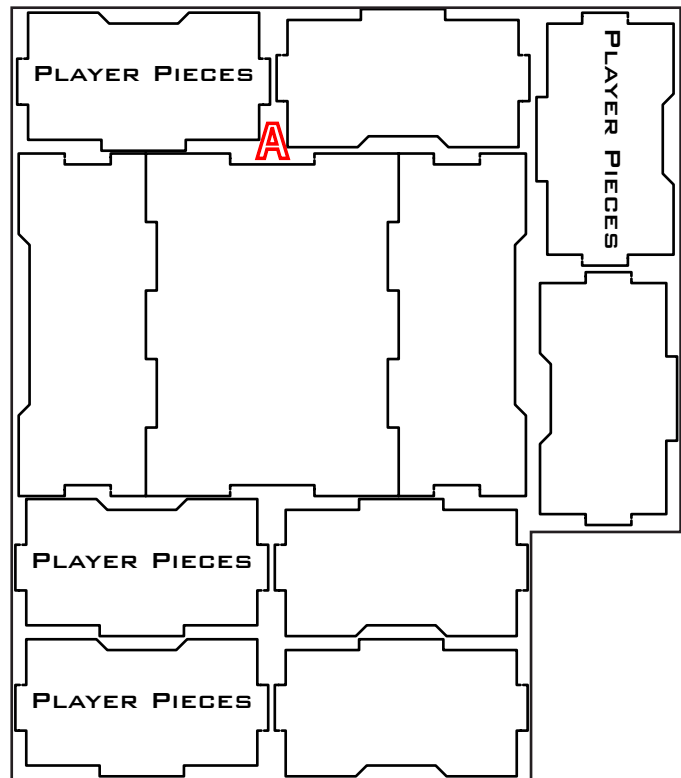
This Quick Start Insert is compatible with Scythe® and its expansions. This is a non-licensed product. ALL RIGHTS RESERVED by their respective trademark holders. No challenge to any intellectual property rights is intended or implied by representations of compatibility and no endorsements of any of our products by any other company is implied or represented.



**Sheet A1, A2, A3:**



**Sheet A4:**





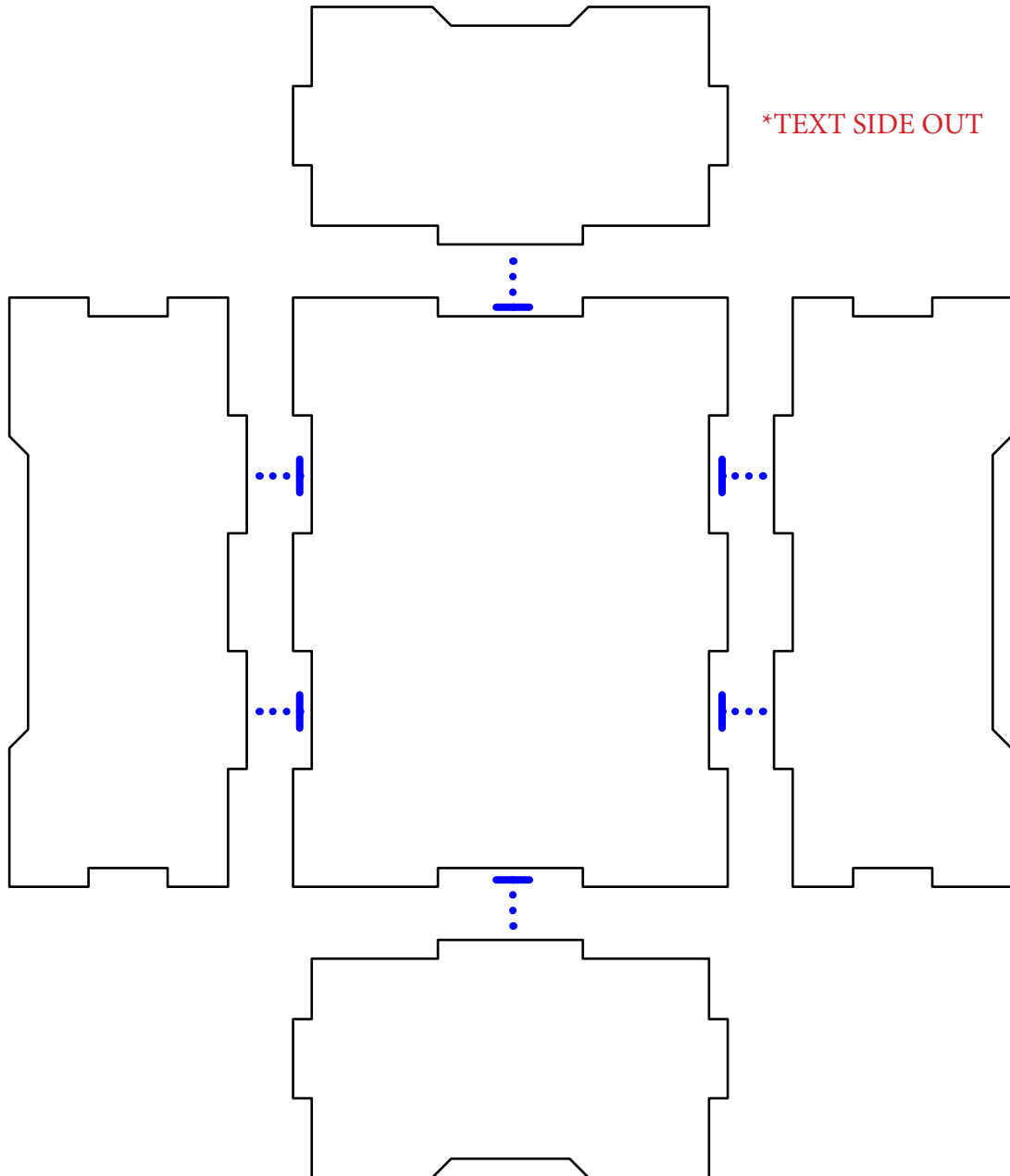
**QUICK » START INSERT™** FOR  
SCYTHE®



### Recommended Assembly Sequence

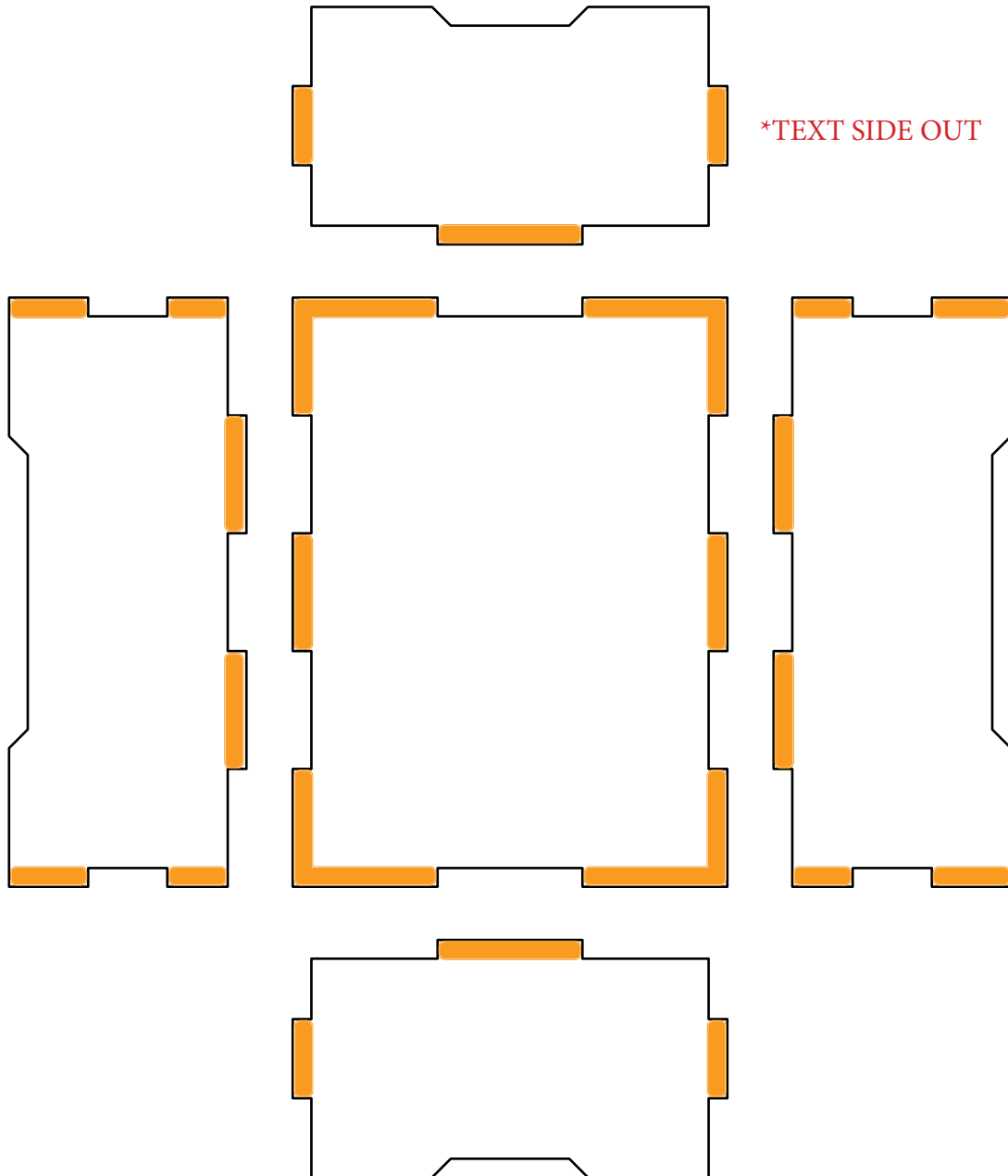
*NOTE: There is no glue on the internal pieces, they stay in place by their interlocking fit*

1. Glue and assemble all side pieces



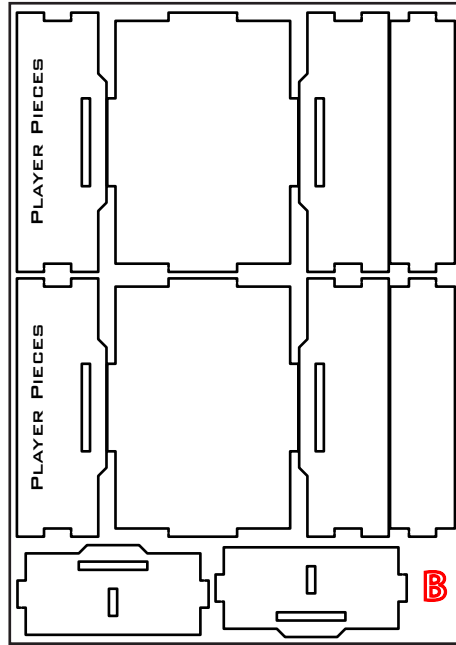


## Glue Locations:

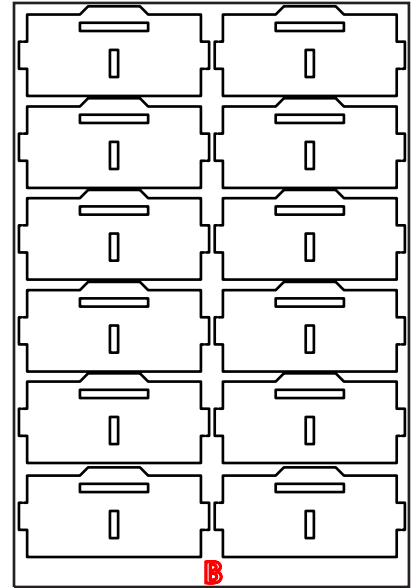




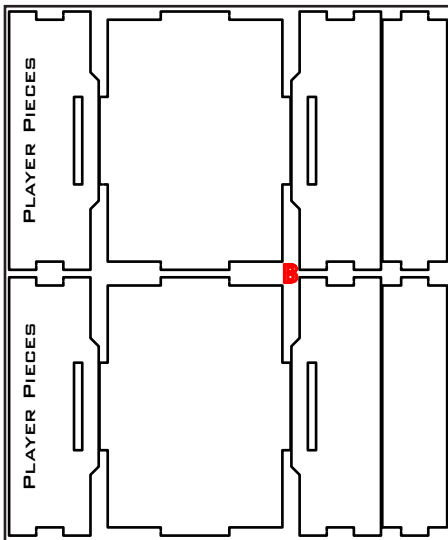
**Sheet B1:**



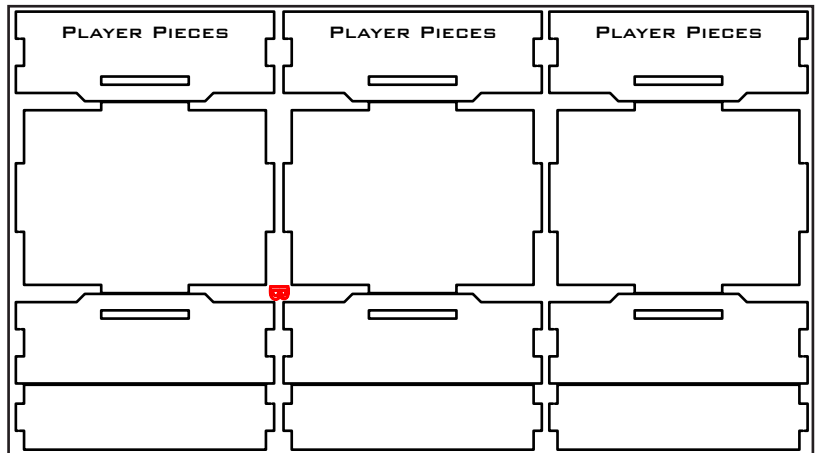
**Sheet B2:**



**Sheet B3:**

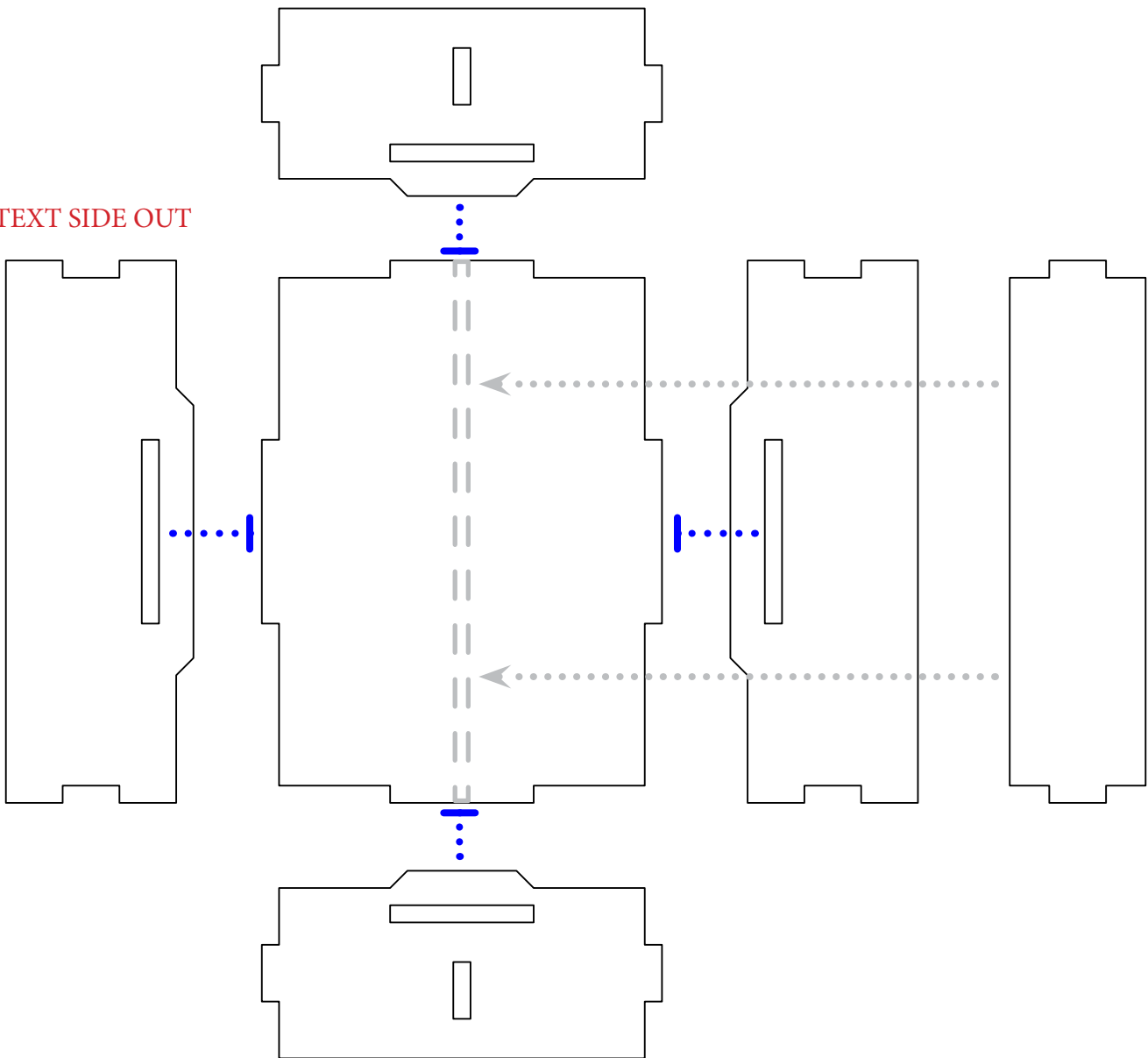


**Sheet B4:**





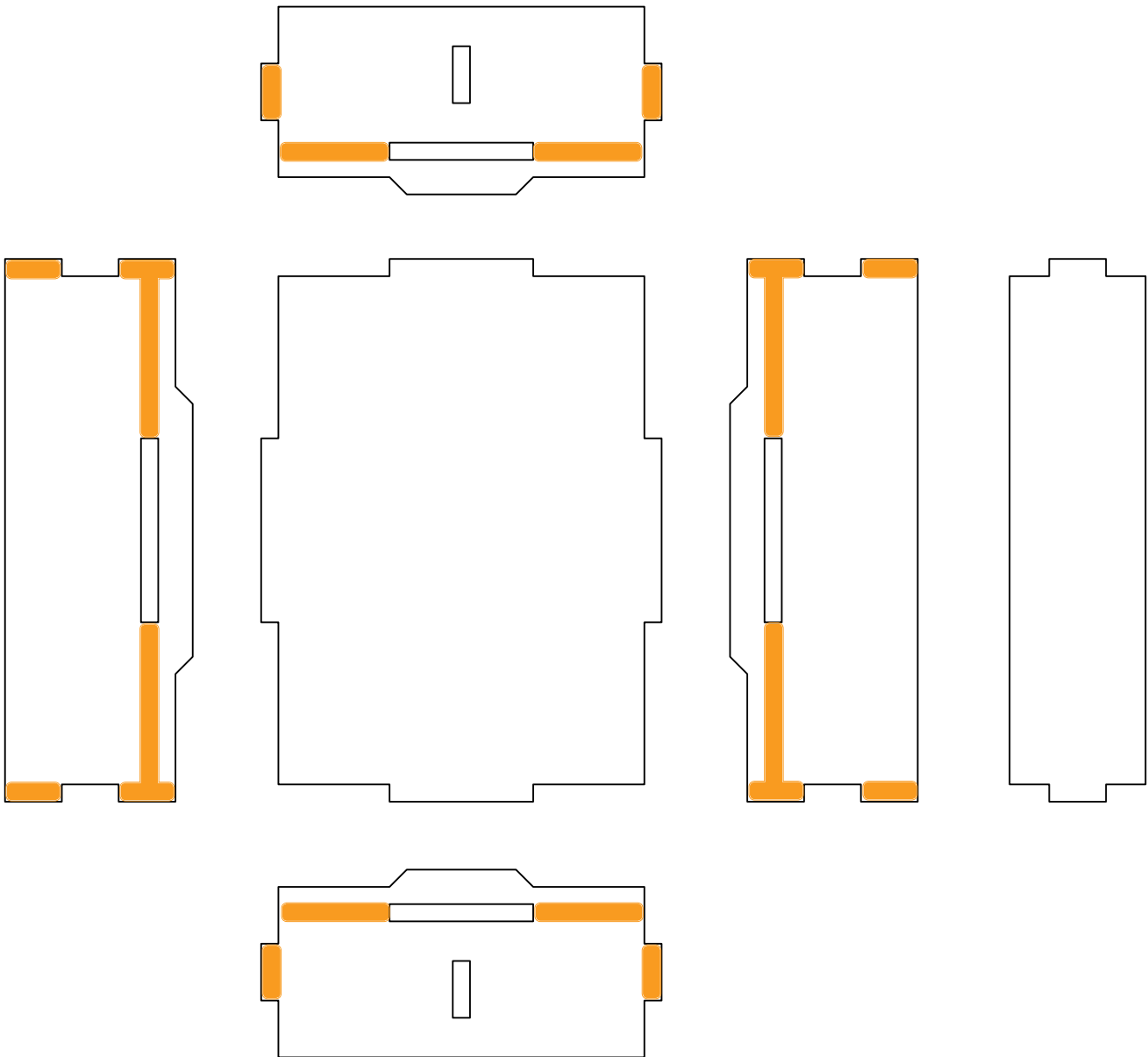
\*TEXT SIDE OUT







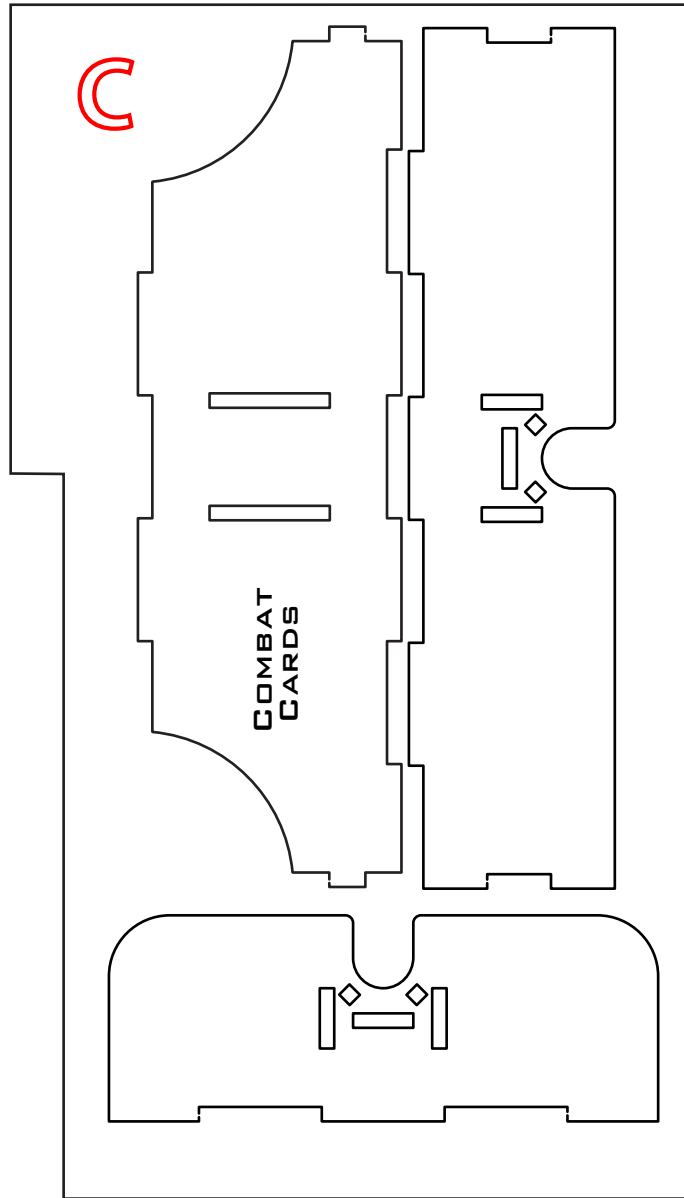
**QUICK » START INSERT™** FOR  
SCYTHE®



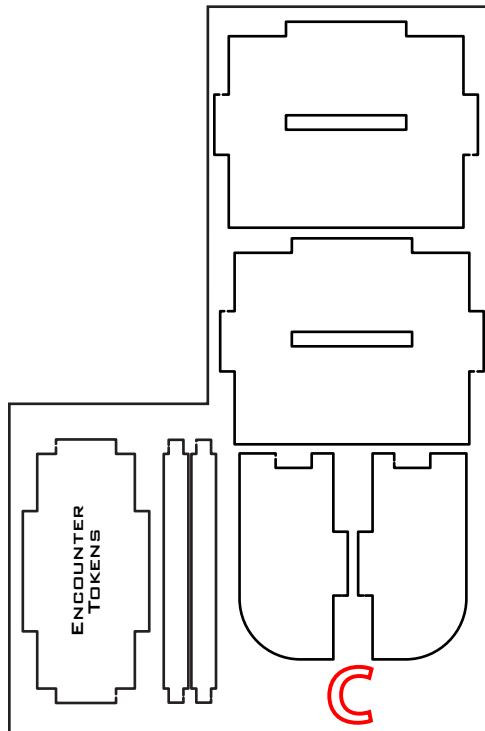
This Quick Start Insert is compatible with Scythe® and its expansions. This is a non-licensed product. ALL RIGHTS RESERVED by their respective trademark holders. No challenge to any intellectual property rights is intended or implied by representations of compatibility and no endorsements of any of our products by any other company is implied or represented.

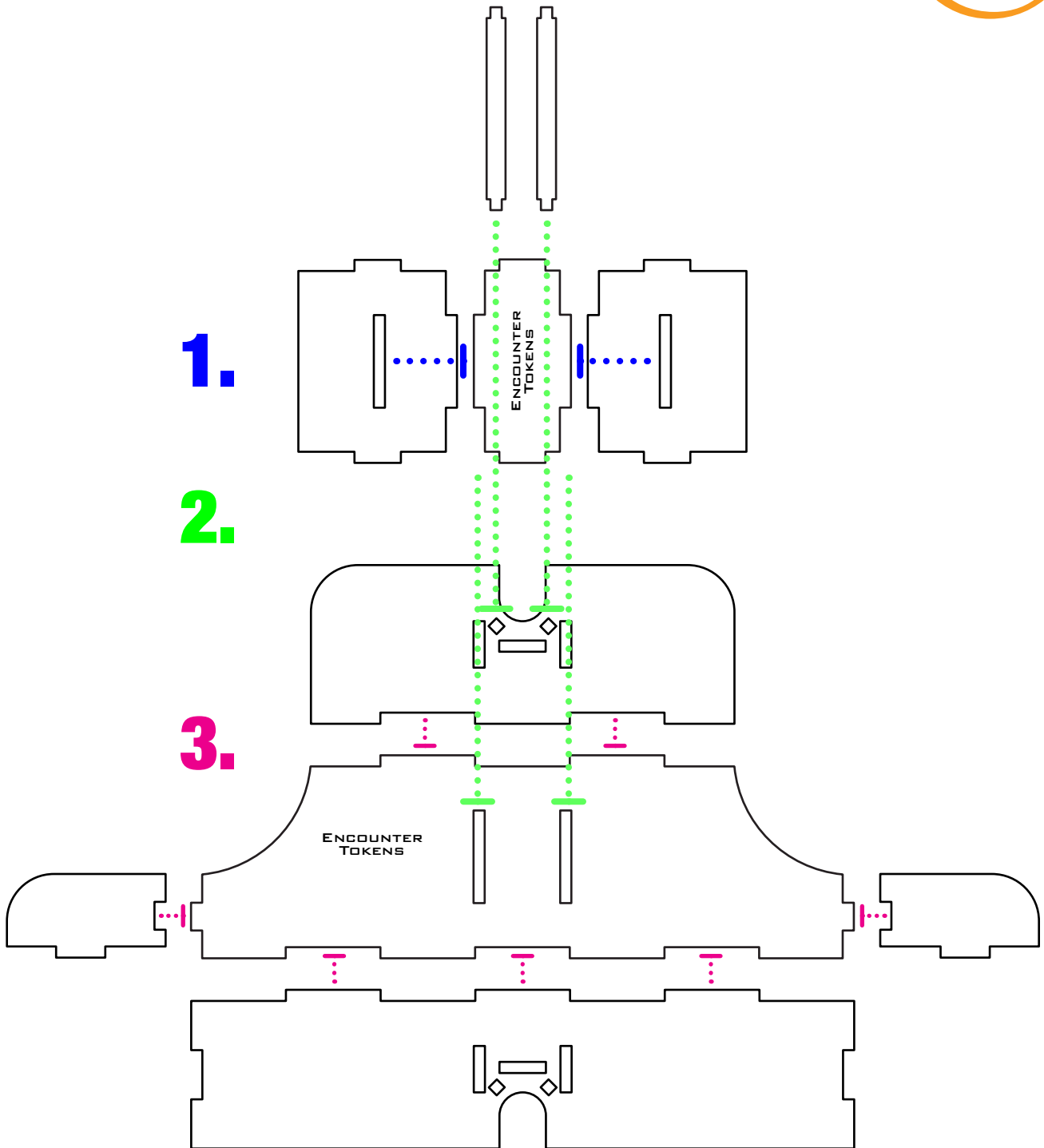
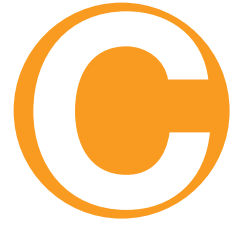


### Sheet C2:



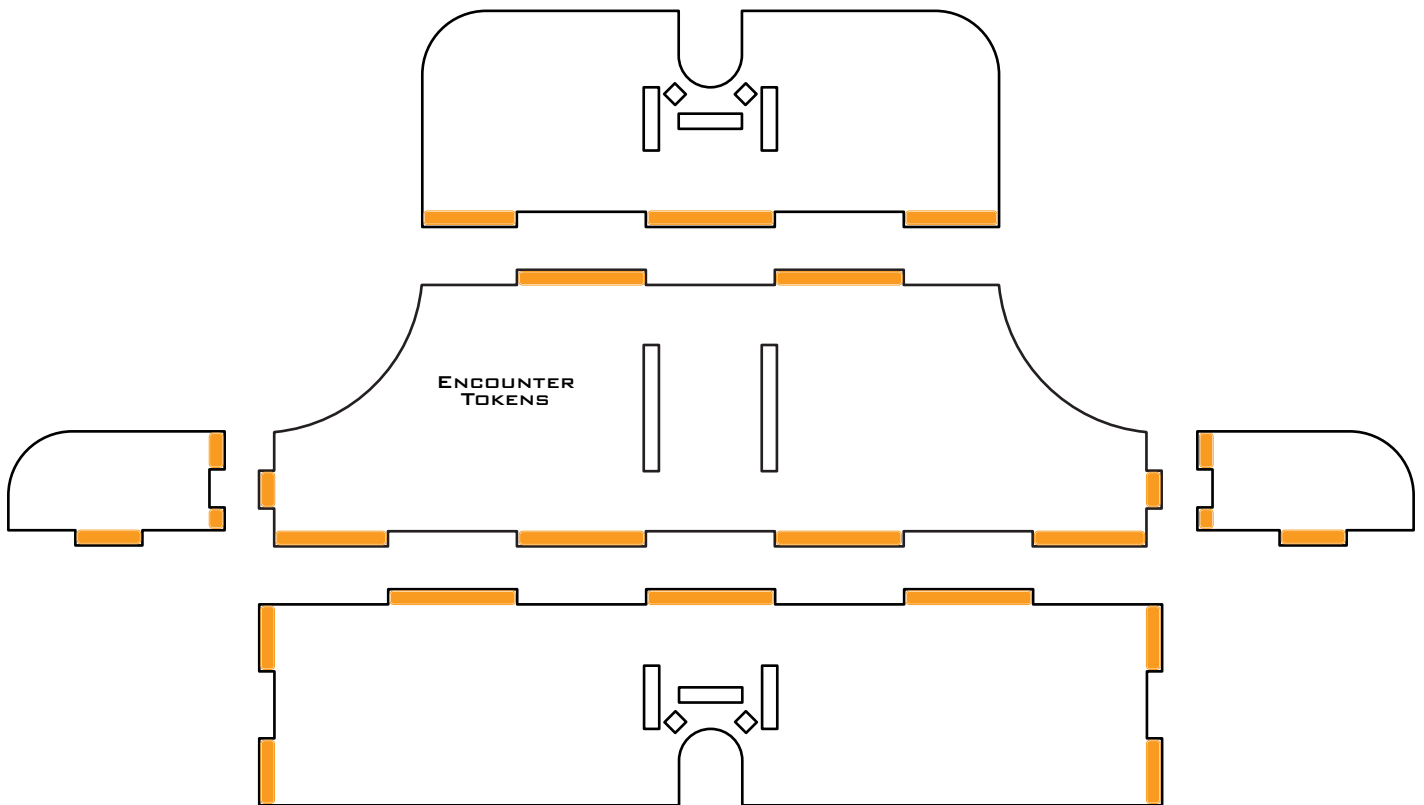
### Sheet C1:





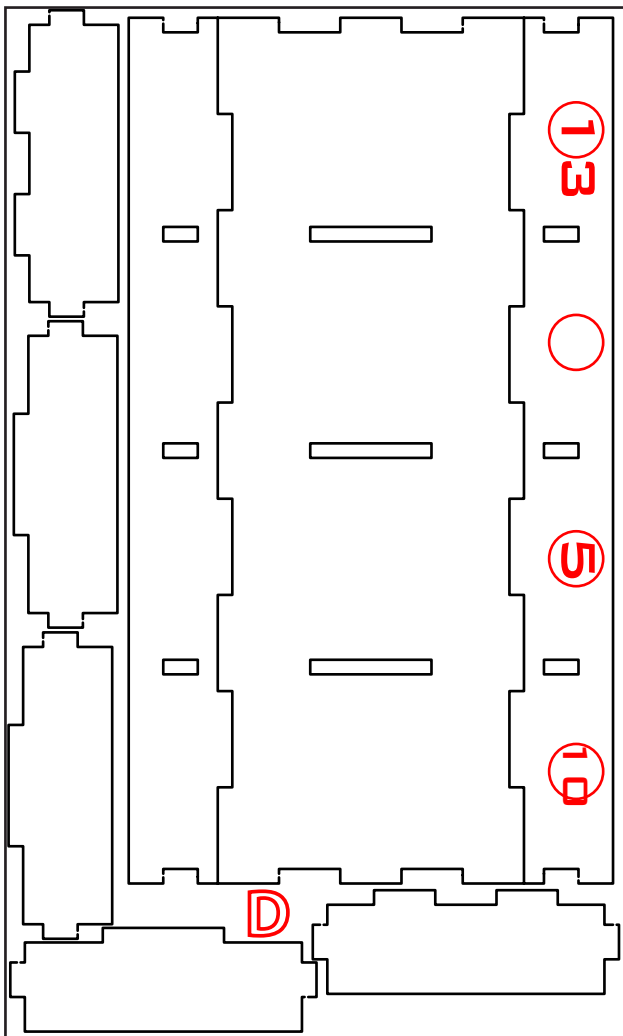


## Glue Locations:





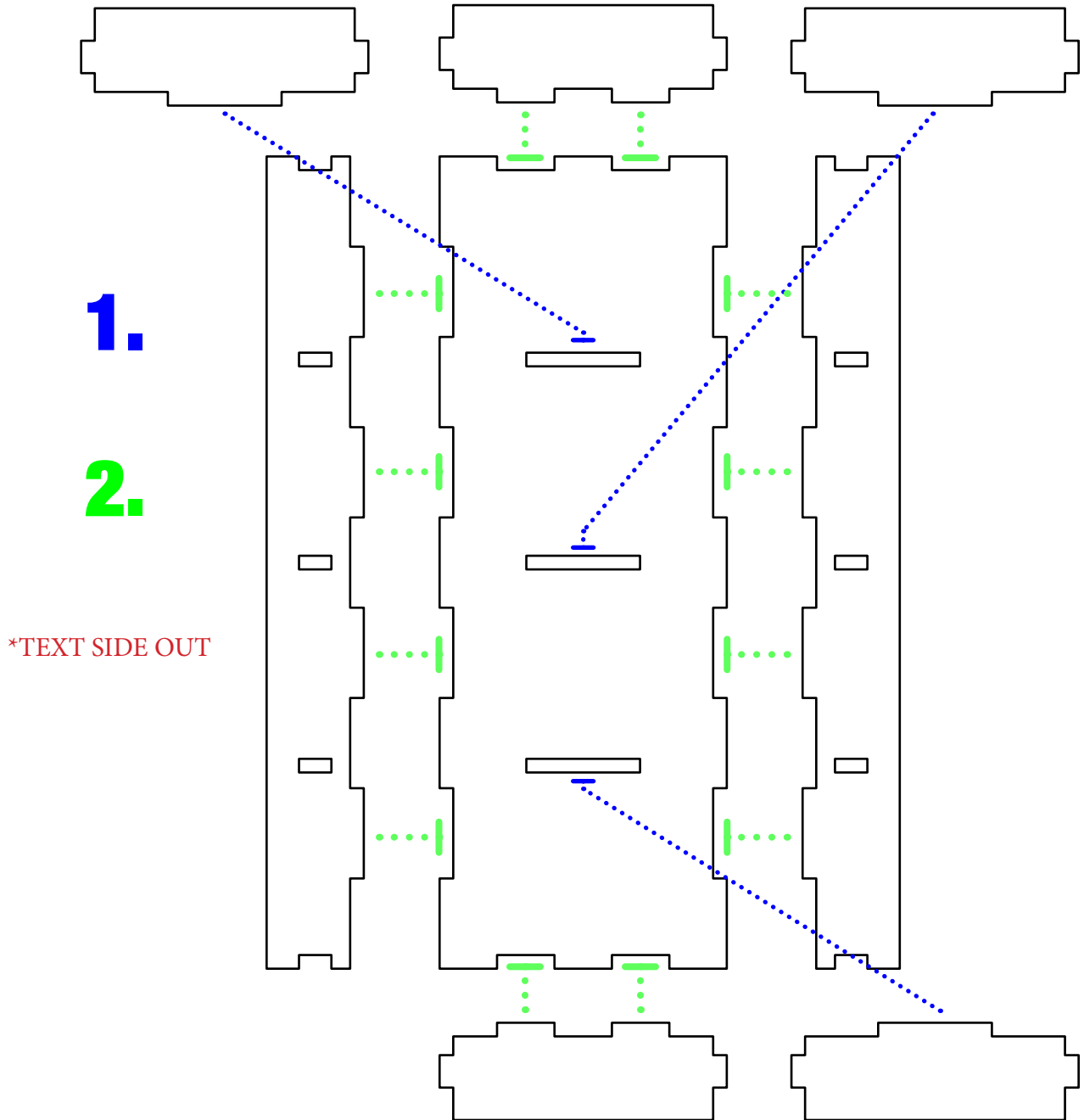
### Sheet D1:





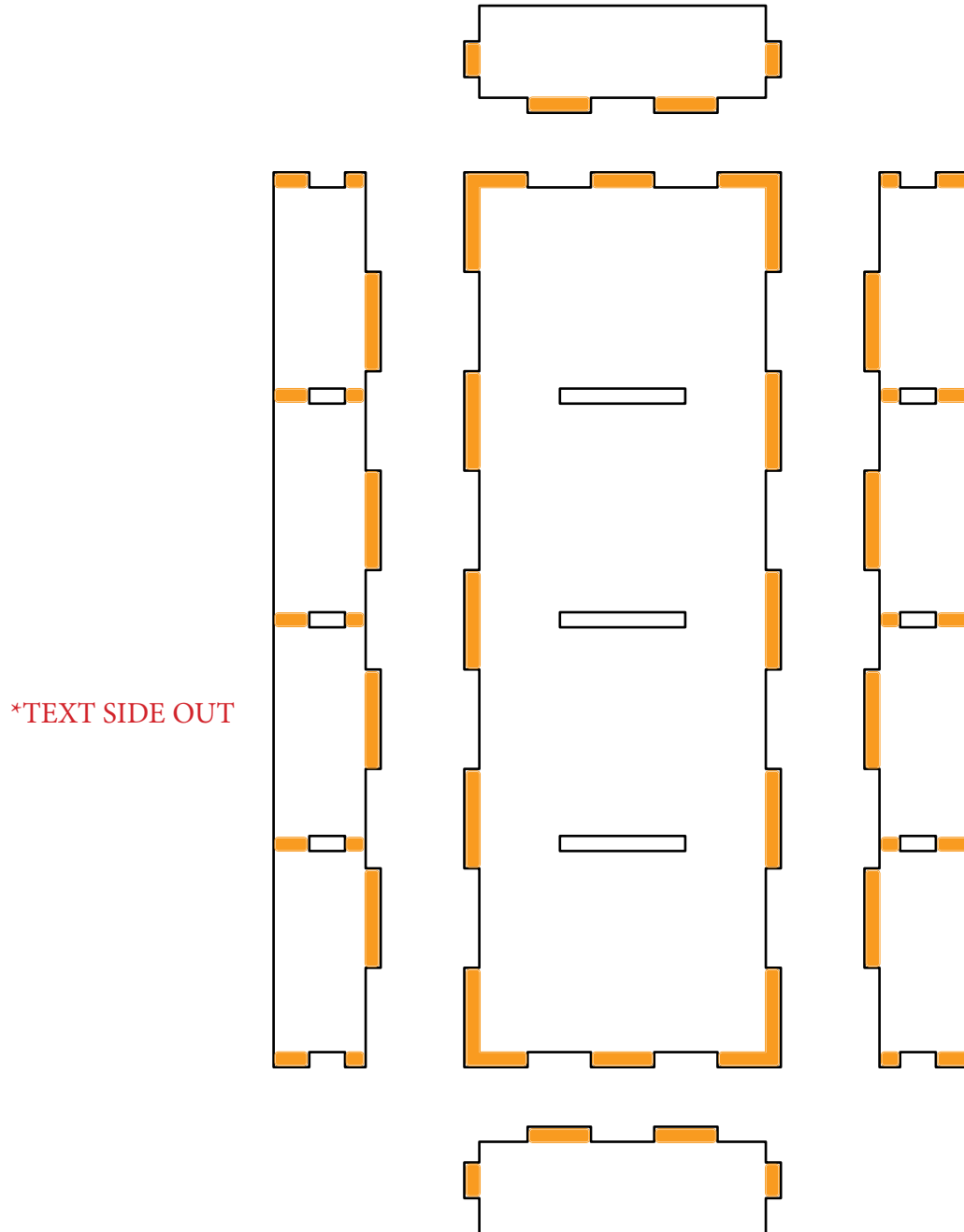
### Recommended Assembly Sequence

1. Glue and press in all center pieces prior to gluing into base plate
2. Glue and insert long pieces, then glue on end pieces.





## Glue Locations:

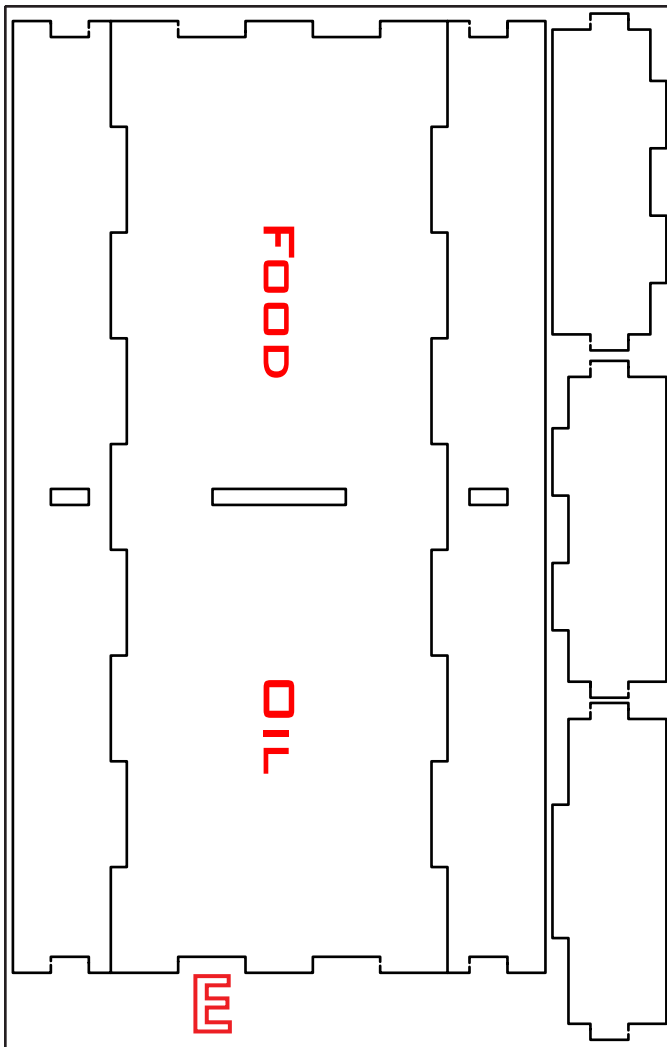




**QUICK » START INSERT™ FOR  
SCYTHE®**



## Sheet E1:

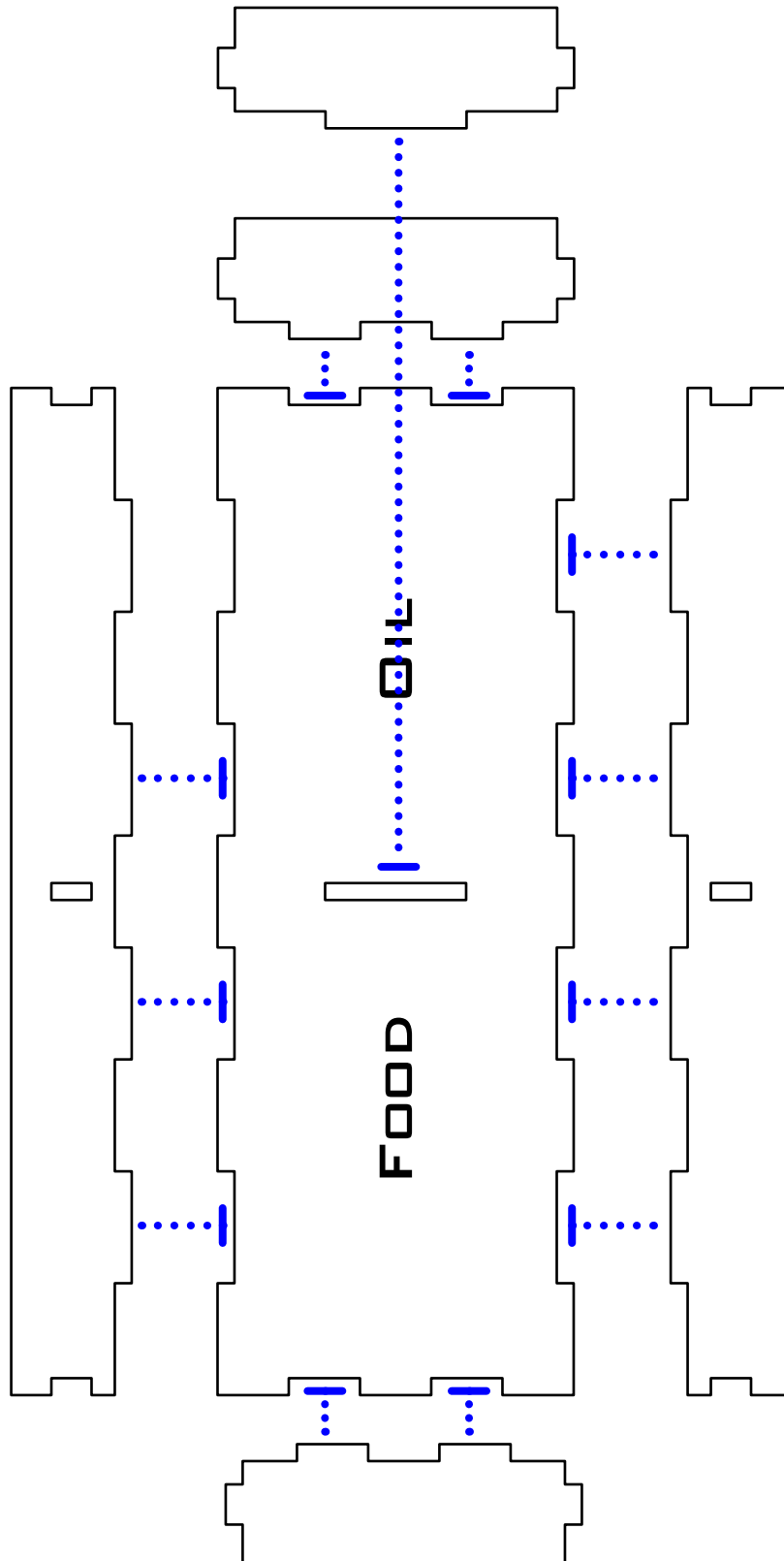


This Quick Start Insert is compatible with Scythe® and its expansions. This is a non-licensed product. ALL RIGHTS RESERVED by their respective trademark holders. No challenge to any intellectual property rights is intended or implied by representations of compatibility and no endorsements of any of our products by any other company is implied or represented.





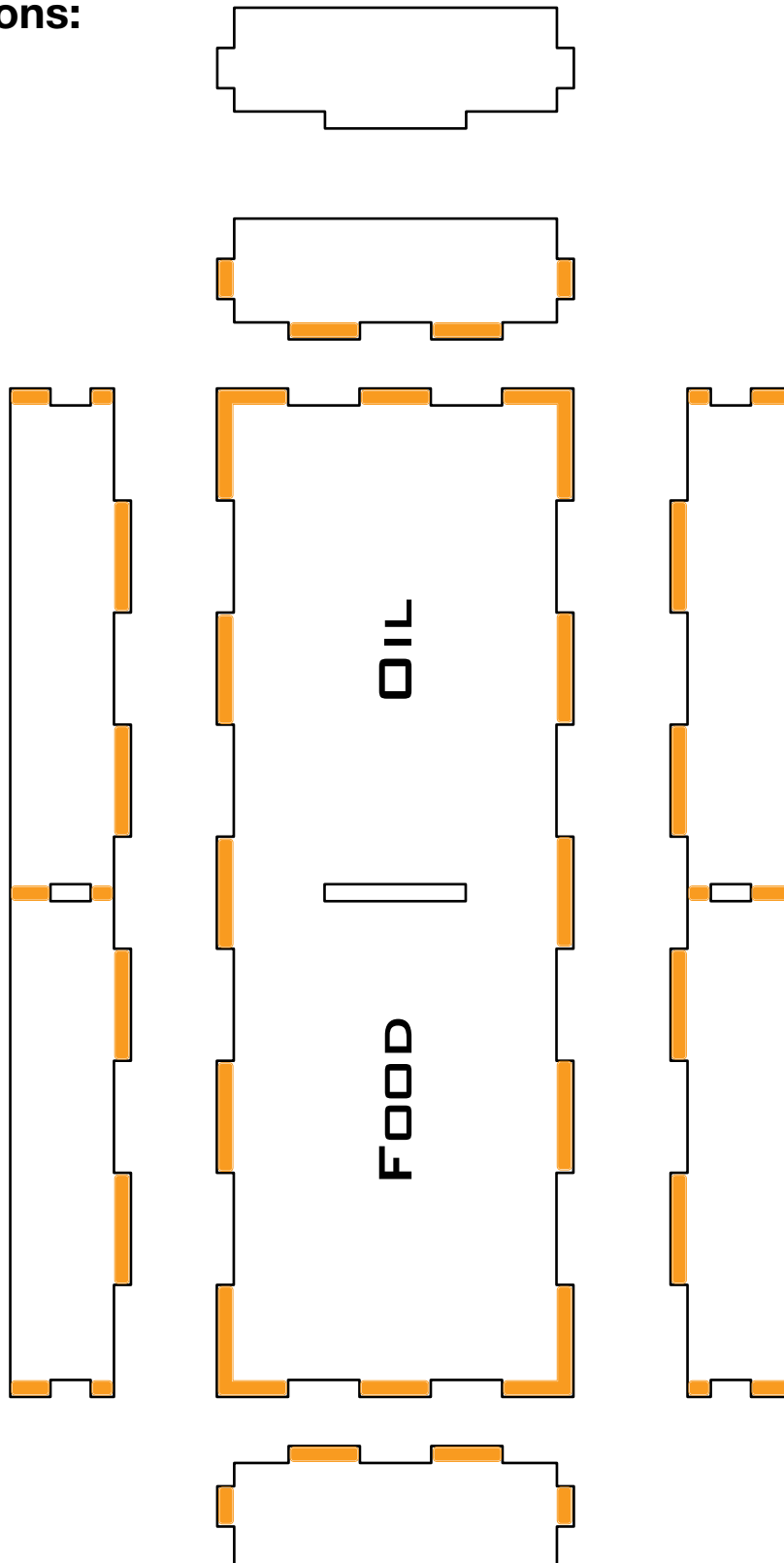
**QUICK » START INSERT™** FOR  
SCYTHE®



This Quick Start Insert is compatible with Scythe® and its expansions. This is a non-licensed product. ALL RIGHTS RESERVED by their respective trademark holders. No challenge to any intellectual property rights is intended or implied by representations of compatibility and no endorsements of any of our products by any other company is implied or represented.

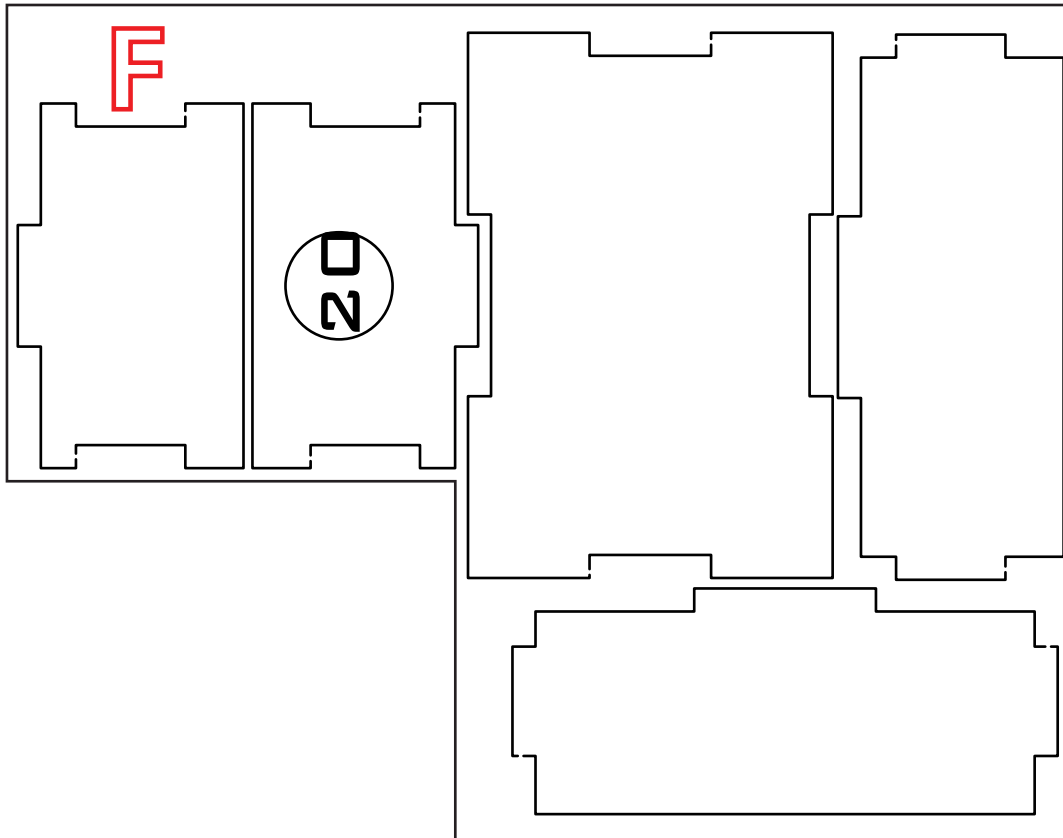


**Glue Locations:**





### Sheet F1:



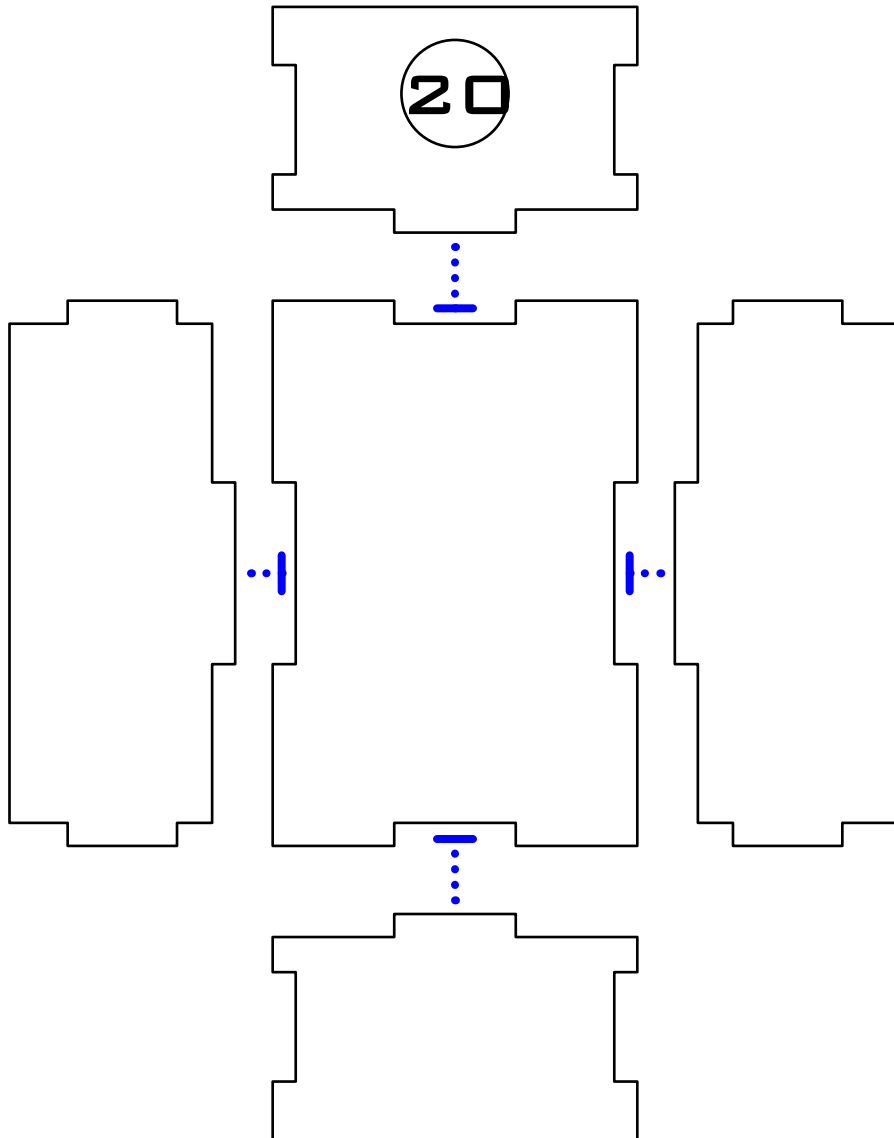


**QUICK » START INSERT™** FOR  
SCYTHE®



## Recommended Assembly Sequence

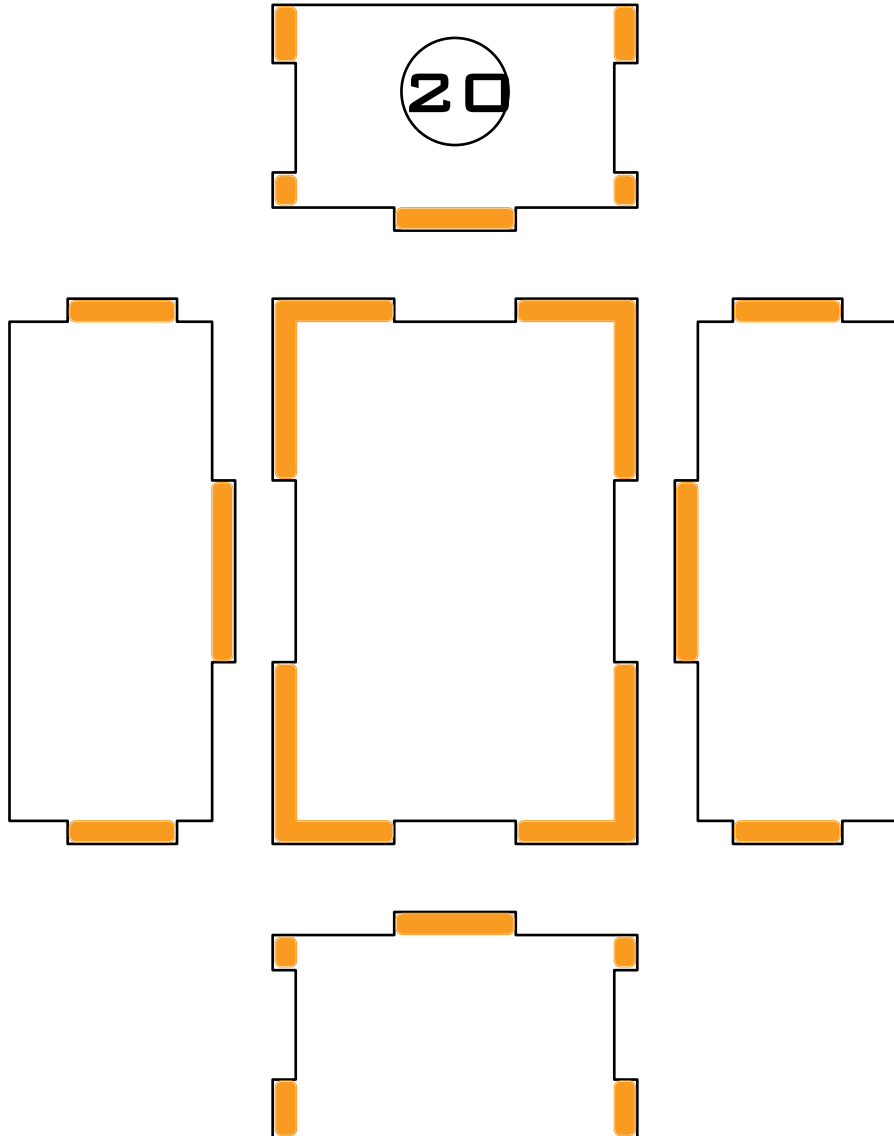
1. Glue and assemble all side pieces



This Quick Start Insert is compatible with Scythe® and its expansions. This is a non-licensed product. ALL RIGHTS RESERVED by their respective trademark holders. No challenge to any intellectual property rights is intended or implied by representations of compatibility and no endorsements of any of our products by any other company is implied or represented.

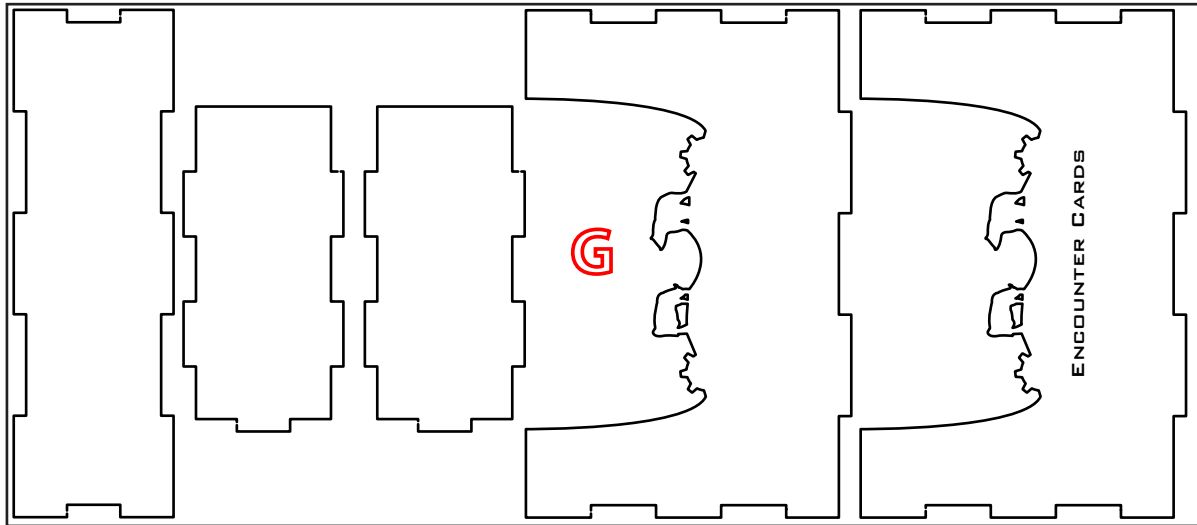


## Glue Locations:





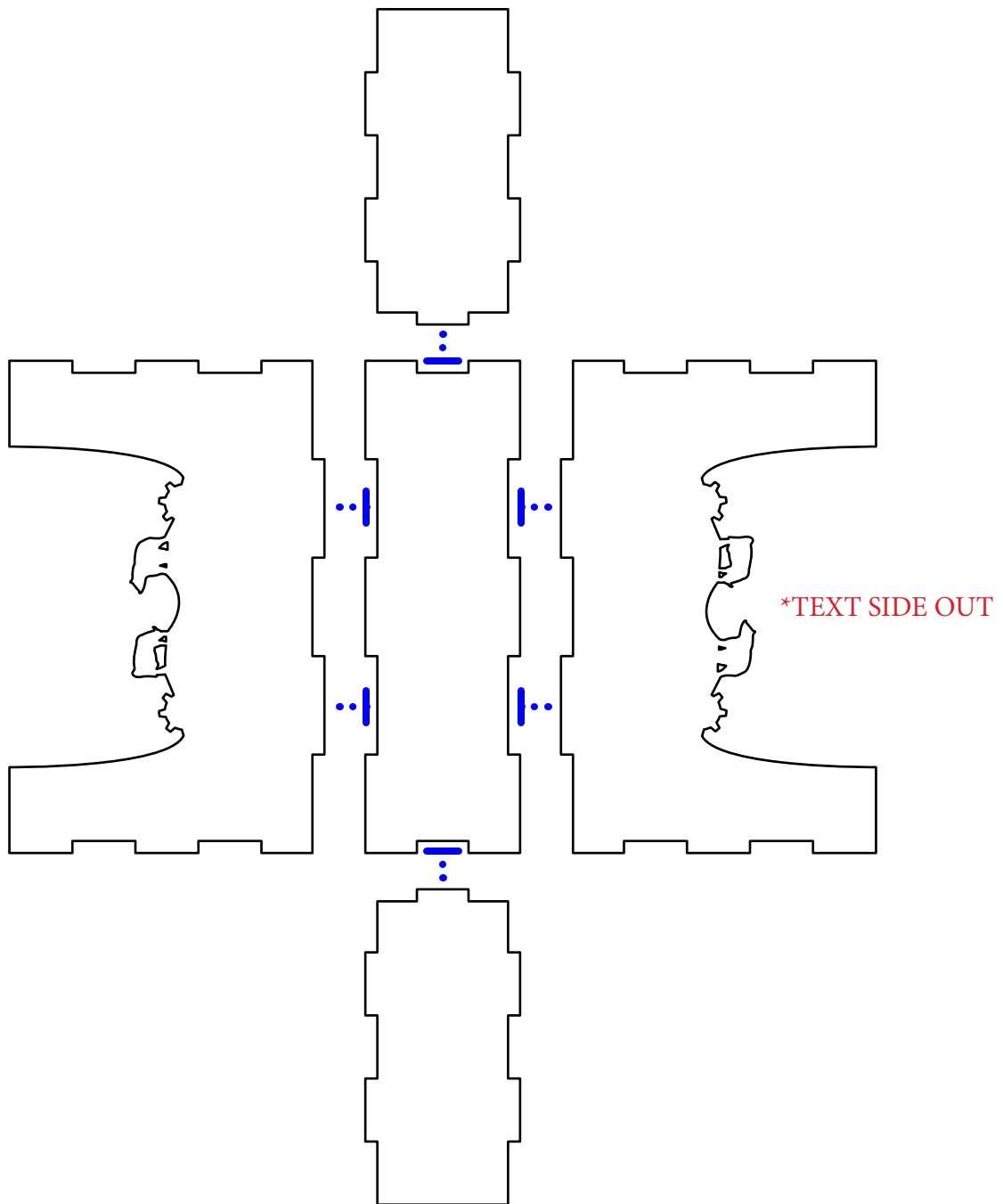
## Sheet G1:





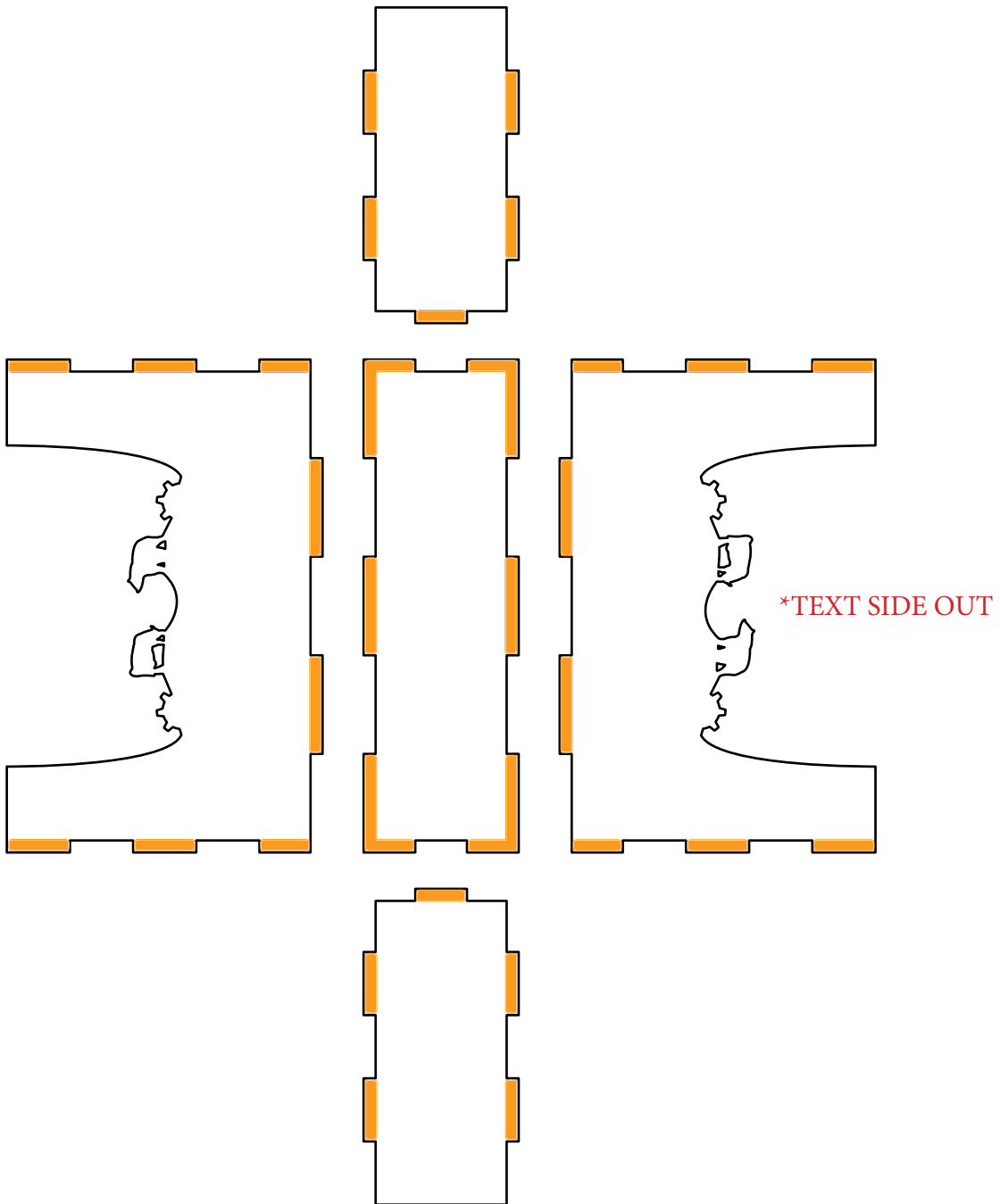
### Recommended Assembly Sequence

1. Glue and assemble all side pieces





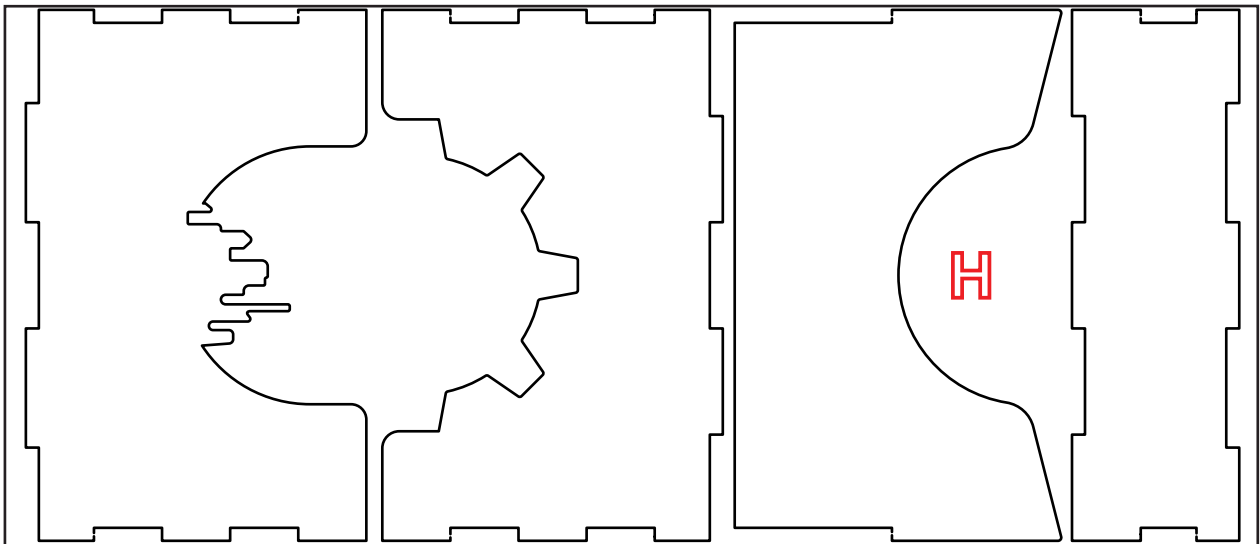
## Glue Locations:



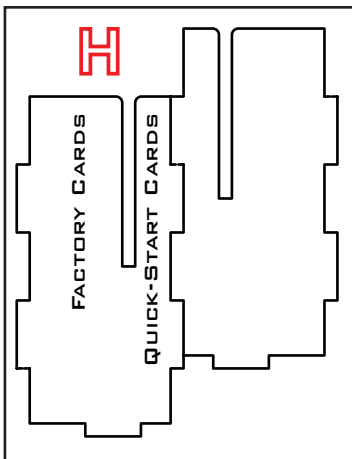




### Sheet H1:



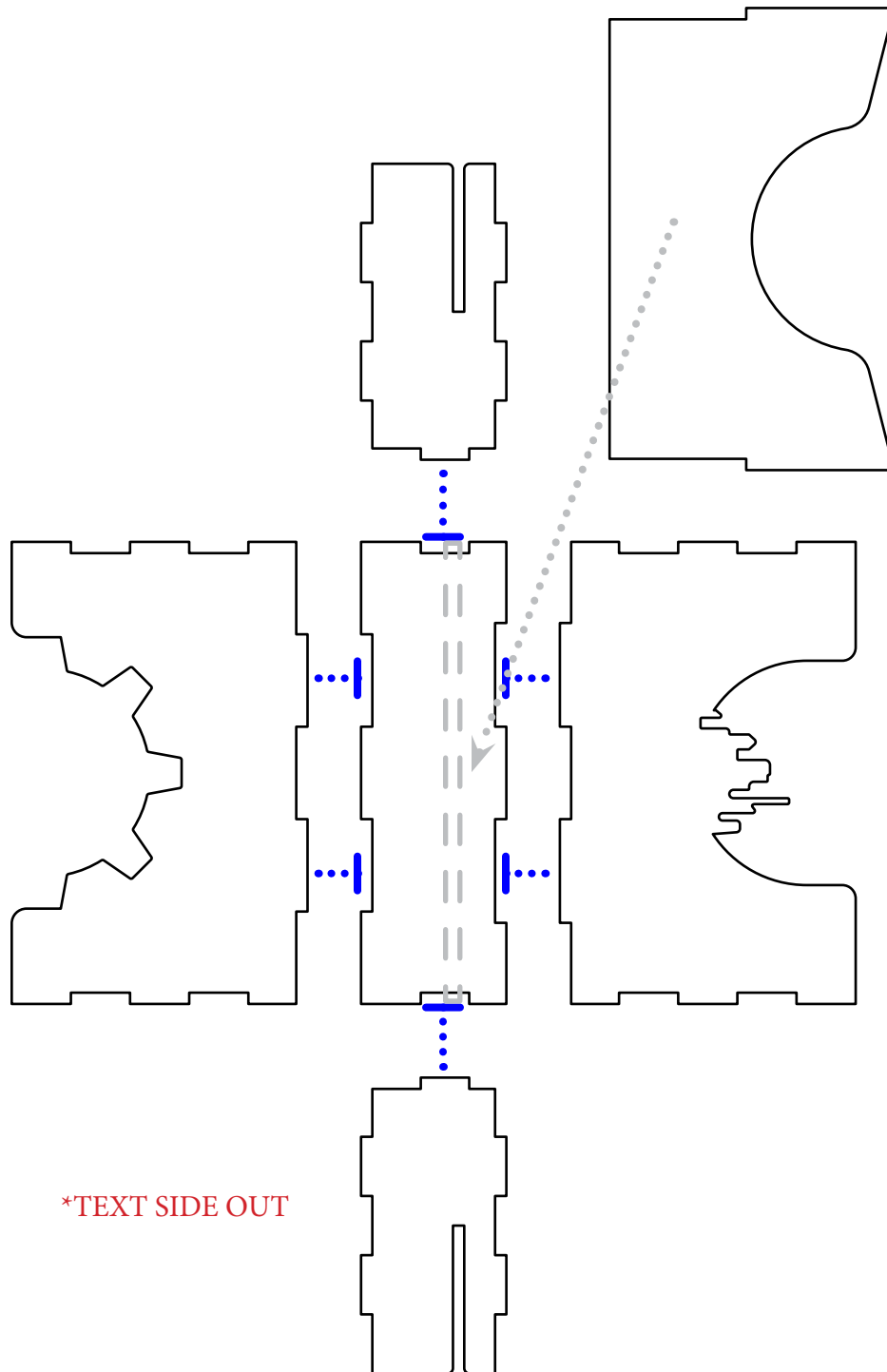
### Sheet H2:





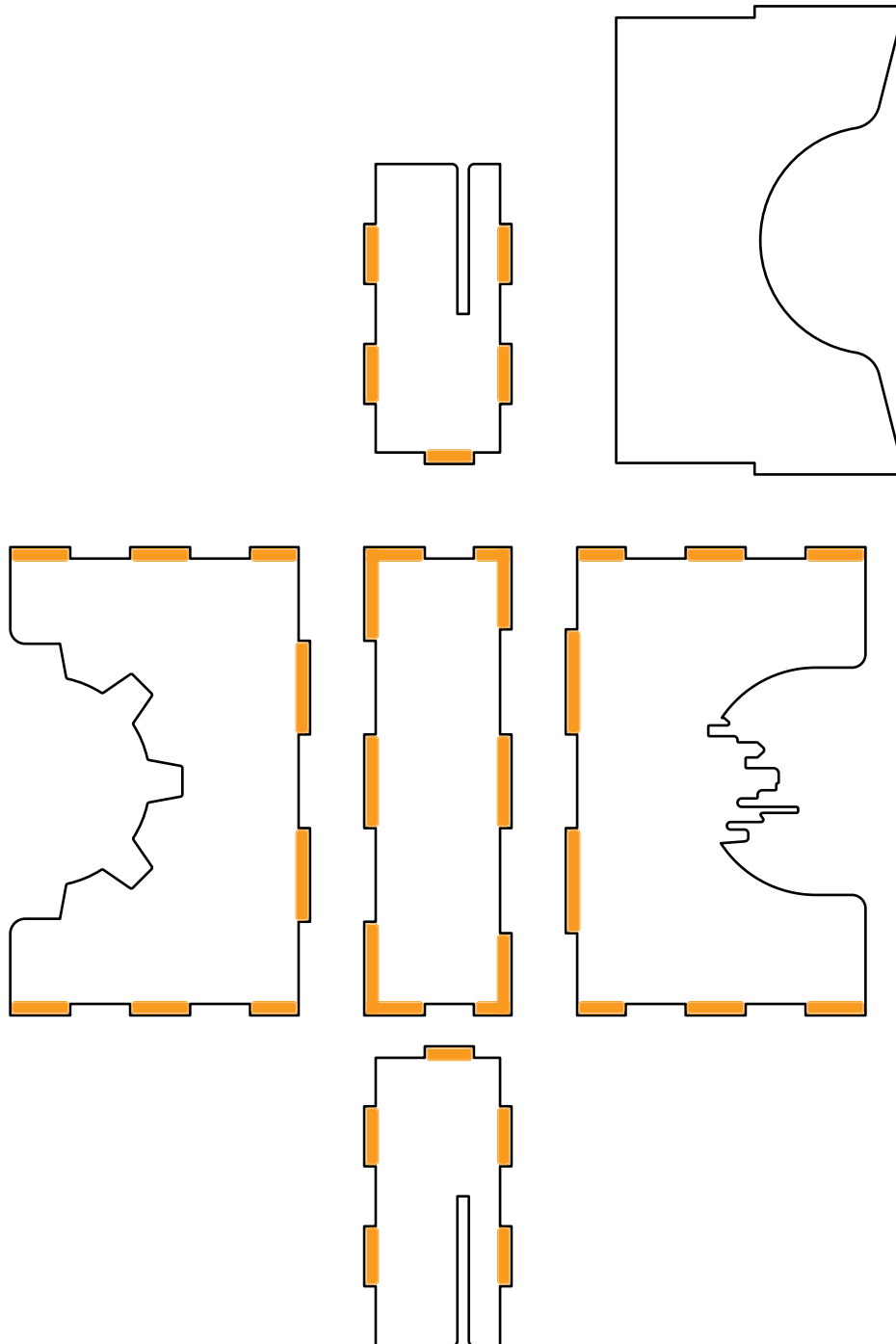
### Recommended Assembly Sequence

1. Glue and assemble all side pieces
2. No need to glue the dividing tab in



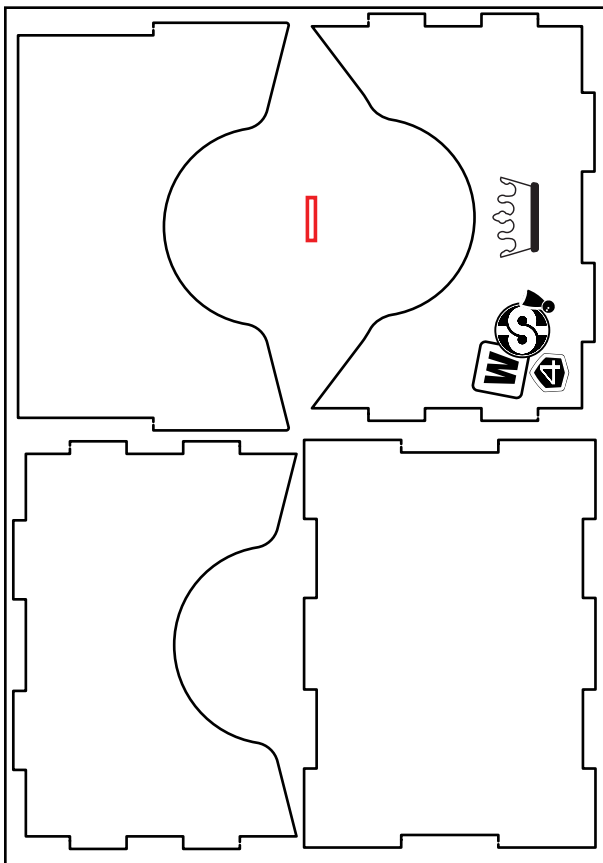


## Glue Locations:

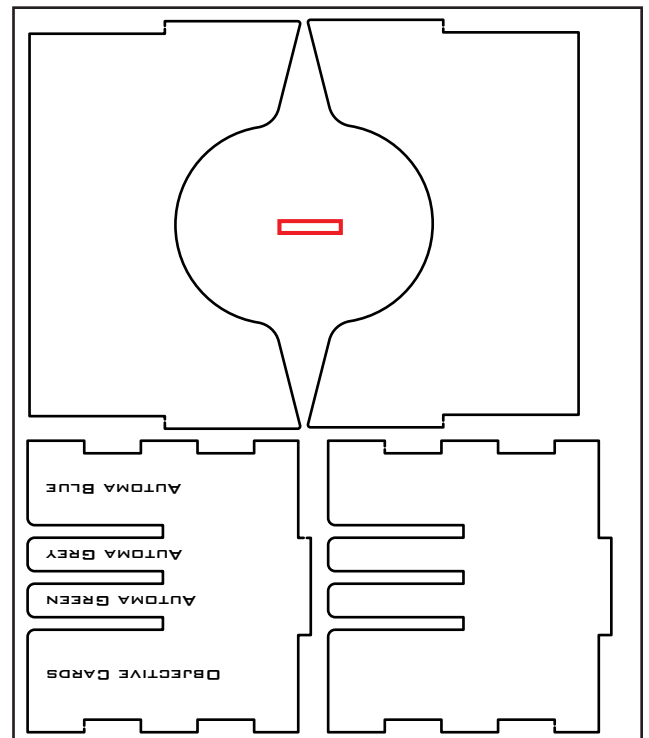




**Sheet I1:**

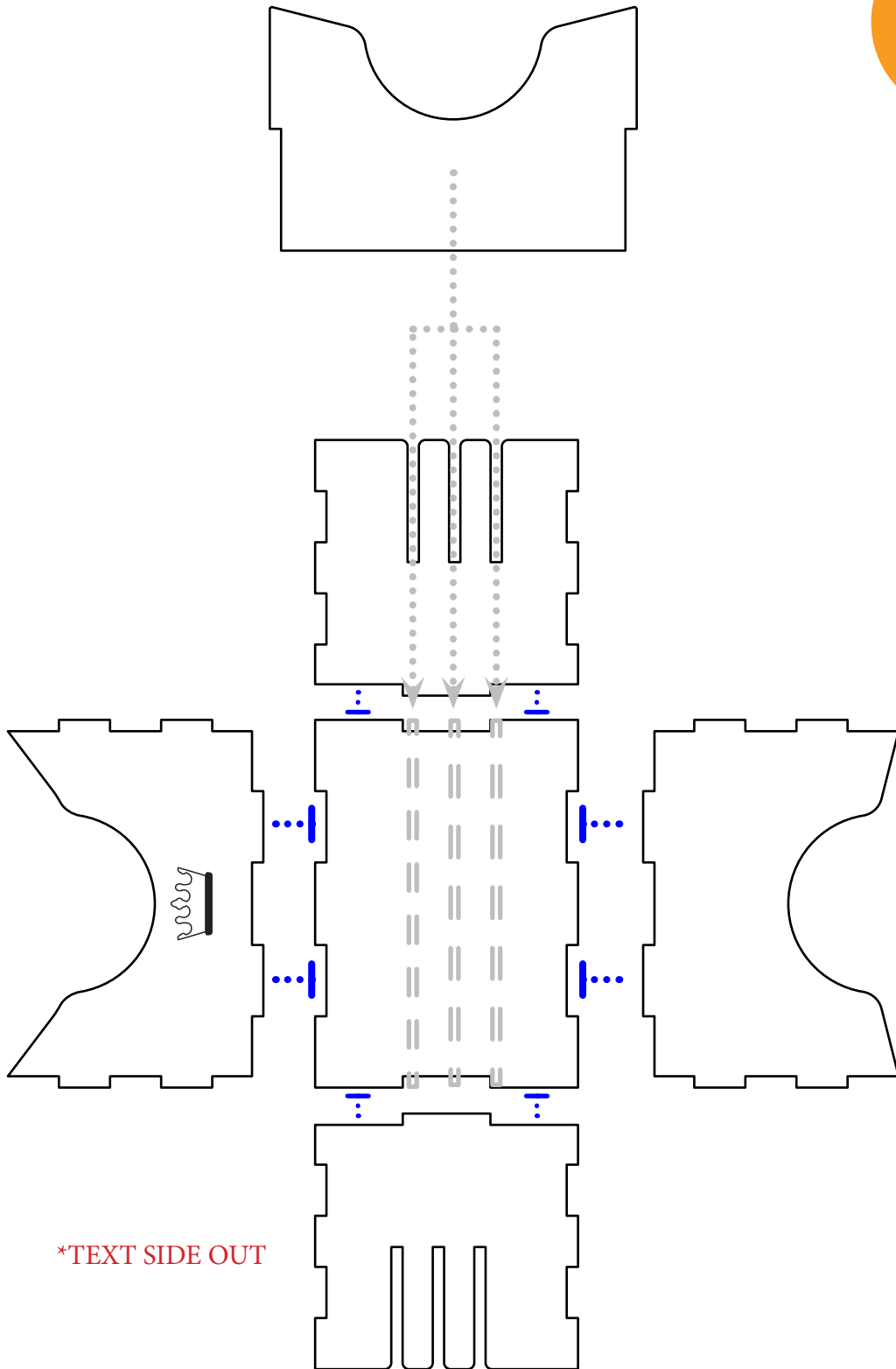


**Sheet I2:**

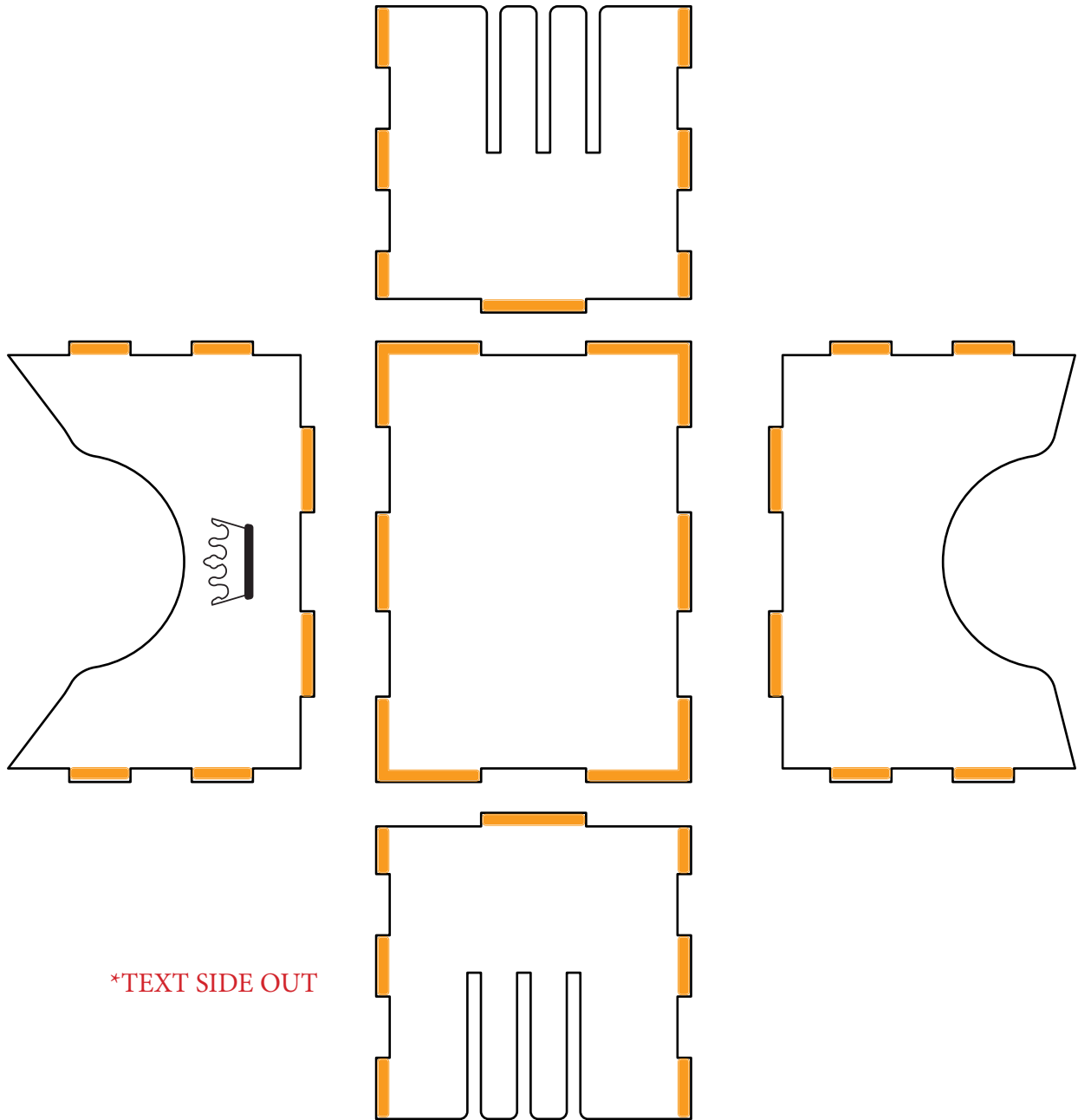




**QUICK » START INSERT™** FOR  
SCYTHE®

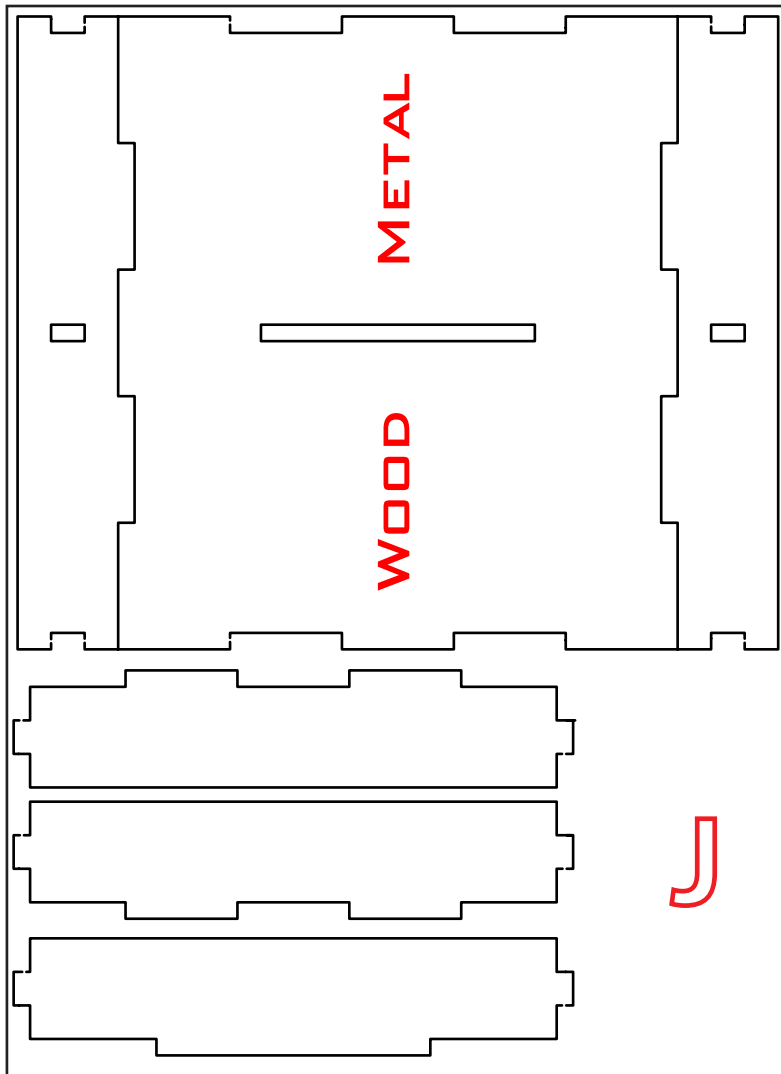


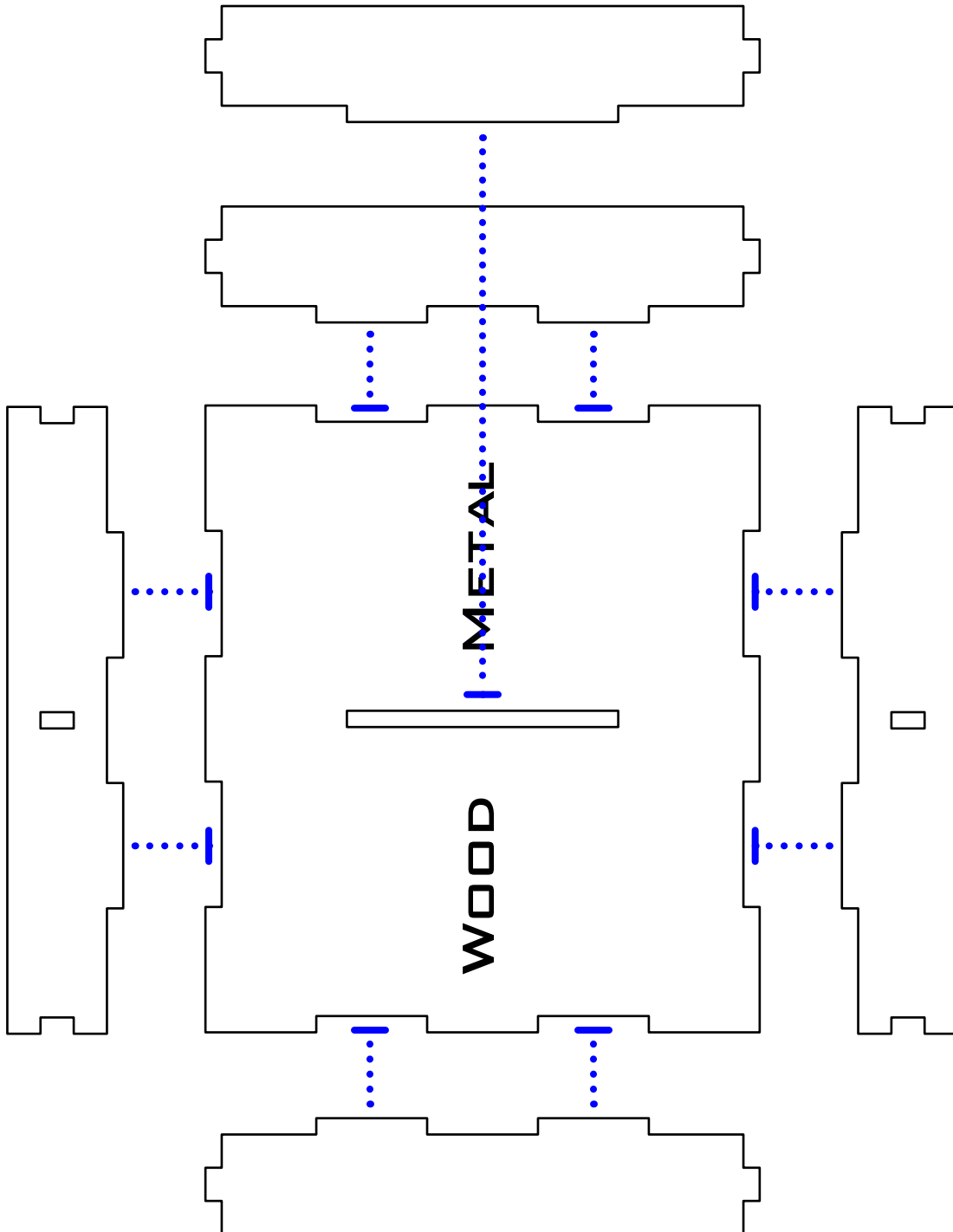
This Quick Start Insert is compatible with Scythe® and its expansions. This is a non-licensed product. ALL RIGHTS RESERVED by their respective trademark holders. No challenge to any intellectual property rights is intended or implied by representations of compatibility and no endorsements of any of our products by any other company is implied or represented.



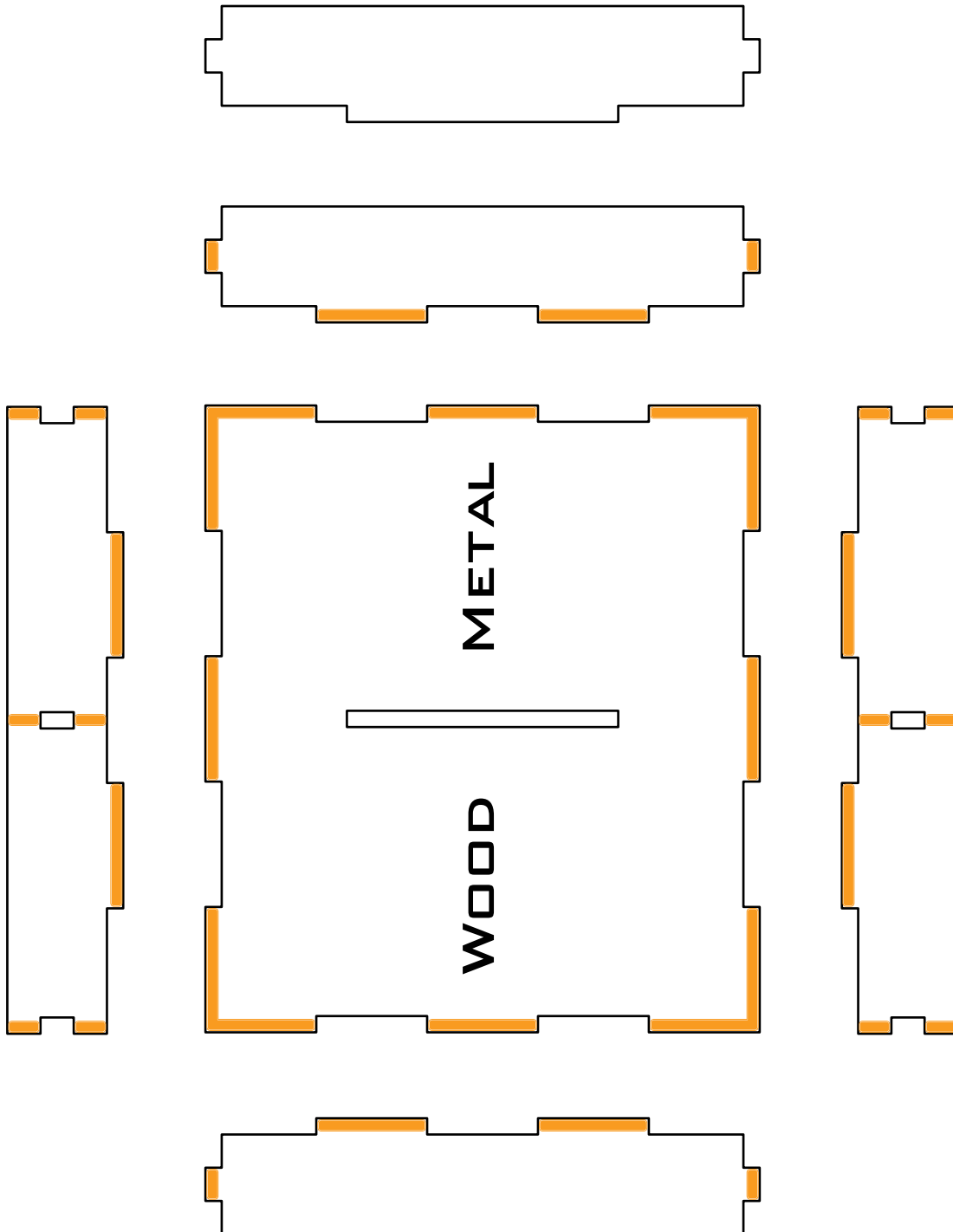


### Sheet J1:











# QUICK START INSERT™ FOR SCYTHE®

## Layout in Box



This Quick Start Insert is compatible with Scythe® and its expansions. This is a non-licensed product. ALL RIGHTS RESERVED by their respective trademark holders. No challenge to any intellectual property rights is intended or implied by representations of compatibility and no endorsements of any of our products by any other company is implied or represented.



# QUICK»START INSERT™ FOR SCYTHE®

## Layout in Box



This Quick Start Insert is compatible with Scythe® and its expansions. This is a non-licensed product. ALL RIGHTS RESERVED by their respective trademark holders. No challenge to any intellectual property rights is intended or implied by representations of compatibility and no endorsements of any of our products by any other company is implied or represented.



**QUICK▶▶START INSERT™ FOR  
SCYTHE®**



This Quick Start Insert is compatible with Scythe® and its expansions. This is a non-licensed product. ALL RIGHTS RESERVED by their respective trademark holders. No challenge to any intellectual property rights is intended or implied by representations of compatibility and no endorsements of any of our products by any other company is implied or represented.



# QUICK START INSERT™ FOR SCYTHE®



This Quick Start Insert is compatible with Scythe® and its expansions. This is a non-licensed product. ALL RIGHTS RESERVED by their respective trademark holders. No challenge to any intellectual property rights is intended or implied by representations of compatibility and no endorsements of any of our products by any other company is implied or represented.